

It Is This Sewell Rubber Roadbed Built in the Wheel That Receives and Absorbs the Road Shocks

All road shocks are picked up at the point of contact with the road by the Sewell Rubber Cushion and distributed over forty per cent of the wheel. So, these Road Shocks are Diverted Away from the Hub, the Axle, the Bearings, the Mechanism of the Truck. That is the action of the Sewell Principle—"The Resiliency Built in the Wheel."

What is the Sewell Rubber Cushion?

It is a continuous, permanent Roadbed of Soft Rubber, that does not and can not wear out because it is not in contact with the road. The Motor Truck al-

ways carries this Rubber Roadbed with it, because it is literally "Built in the Wheel."

You buy this Sewell Rubber Roadbed when you buy your Sewell Wheels and it lasts as long as the truck lasts. No delays, no replacements, no repairs. When you buy the Sewell Rubber Roadbed you make a Permanent, Profitable Investment.

During the next five months when road conditions are the worst is when Sewell Wheels will pay you one hundred per cent on your investment.

The Sewell Rubber Roadbed is the reason why the country's largest truck owners have unreservedly adopted the Sewell Principle—



F. M. KENNEDY

"The Resiliency Is Built in the Wheel"



SETH LEAVENS



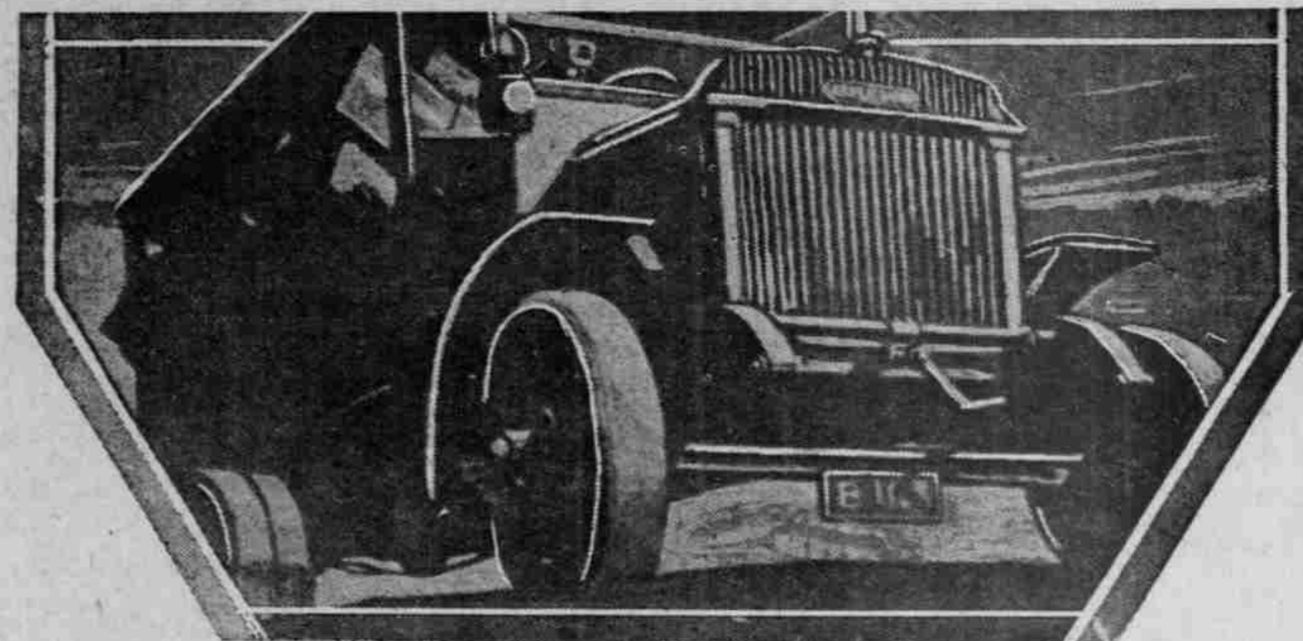
331 Couch St., Near Broadway

Phone Broadway 3334

Distributors for Oregon, Washington and Idaho



GEO. F. HOWARD



PROVEN BEST BY TEST

No matter what your hauling problems may be, for real economical service the Atterbury Truck will give the satisfaction desired.

The rapidly increasing demand for Atterbury Trucks is convincing evidence of their dependability.

In this age of efficiency—use the best—it will help wonderfully towards the achievement of success.

SERVICE IS WHAT COUNTS

On it depends the working time of your truck. Every minute your truck is laid up is that much loss to you. Get our free advice when you figure on a truck—it's yours for the asking.

WE ARE TRUCK SPECIALISTS

We devote our entire time to the sale of trucks, therefore our attention is not divided between trucks and some other line of business. For this reason we can give you the very best service.

ATTERBURY TRUCK SALES CO.

Distributors

343 Oak Street, Near Broadway

Phone Broadway 354

PACKARD and NASH

Your exacting demands in a Motor Car or Truck are fully met in either of these lines.



THE absolute correctness of the Twin-Six, so consistently and persistently proved on the road and on the speedway, leaves the prospective buyer of a fine car but one choice if he is intent upon getting the best.



BY EVERY test, Packard Trucks have proved trustworthy. Their continued use brings unlimited faith and increased confidence for all commercial purposes; they fulfill the promise of low operating cost—in economy they are not even approached by other trucks of higher price.

The year of 1920 will be more prosperous and joyous for you if your automotive equipment bears the name Packard or Nash.

PORTLAND MOTOR CAR CO.

Burnside at Tenth

Telephone Broadway 521

Portland, Oregon



Perfected Valve-in-Head Motor

Searching test of service has proved its power.

THE Perfected Valve-in-Head Motor of the Nash Six was from the first accepted generally as marking a distinct advance in motor engineering. The correctness of that verdict has been demonstrated. The searching test of service has proved the Nash Perfected Valve-in-Head Motor to be powerful, economical and quiet.



ASSURING the quality of Nash Truck performance and the stability of the Nash service relationship with owners is the standing in the industry of the big Nash organization itself. That Nash trucks give dependable service is proved by the fact that they are now being used by such concerns as: The Standard Oil Company; Swift & Co.; Morris & Company; The Boston Store, of Chicago; The Palmolive Company; and others.



King "8"

First Car in U. S. Completely Equipped

with 5 wire wheels, 5 cord tires, Victoria side curtains, bumper, motor, spotlight, glass rain and wind deflectors, extension trouble lamp, automatic tire pump, tire cover, tank of gasoline, oil and license tag, and

52 Weeks' Free Service

which includes adjustments of every kind, oiling, greasing, tire and battery service. The only car in America that gives you this free service.

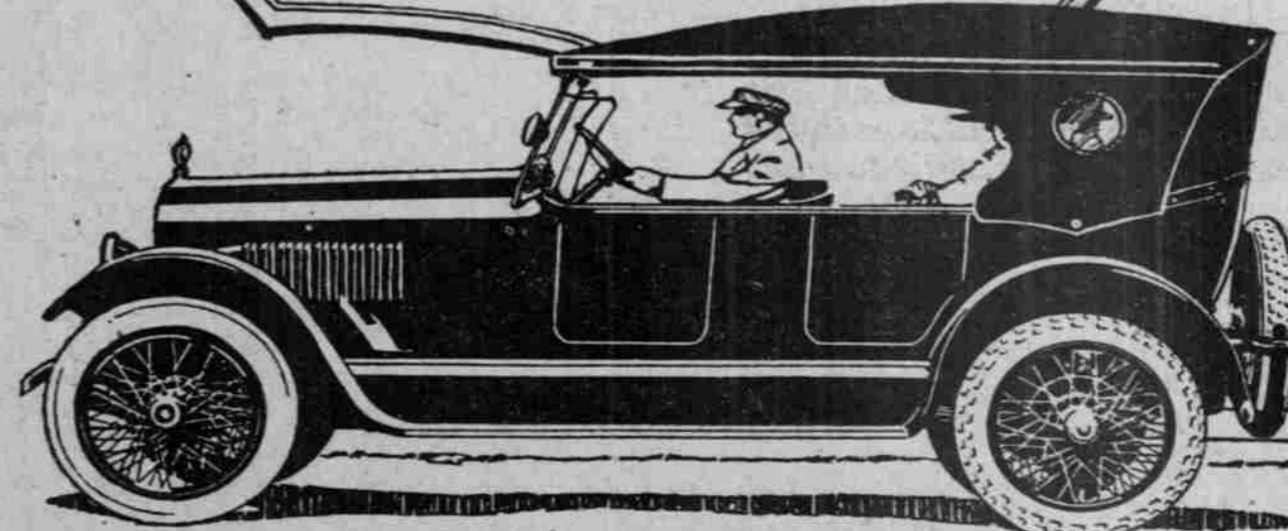
Our New Building Is Now Ready

Finest equipped building of its kind in the entire northwest. Come in and inspect same.

Rubin Motor Car Co., Inc.

Oregon-Washington-Idaho Distributors.

S. E. Corner Broadway and Hoyt Street, Opp. New Postoffice. Broadway 89



King Motor Car Co., Detroit, Mich., Since 1894