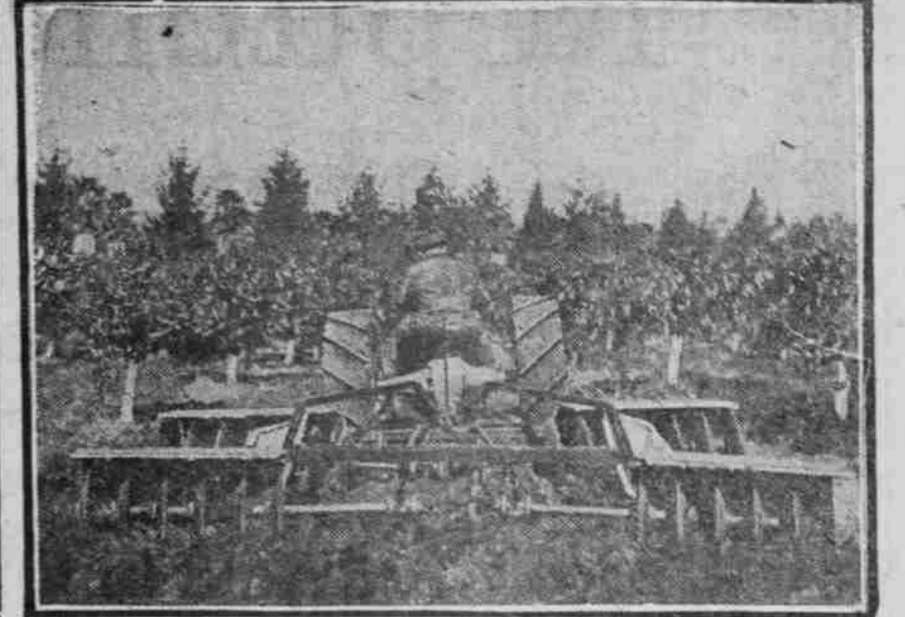


TRACTOR TAKES PLACE AS STRONG, ESSENTIAL FACTOR IN OREGON FARMING

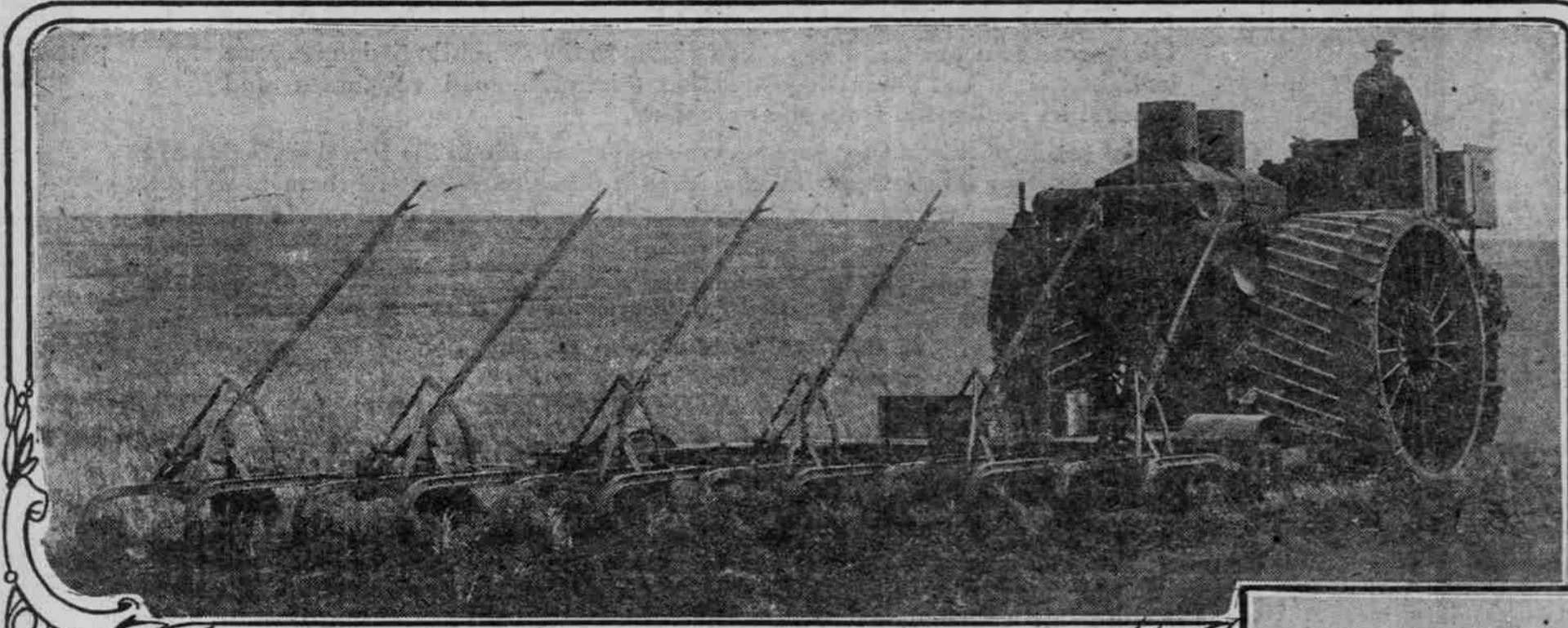
Efficiency and Many-Sided Usefulness of Modern Gasoline Agency for Tilling Soil, Hauling All Manner of Things and Driving Threshers Has Attracted Wide Attention Throughout State and Is Being Extensively Used.



Delivering Grain in Wasco County.



Working an Orchard



Plowing With Gasoline Motor.



Threshing by Tractor

AS REGISTRATION for licenses is not required for tractors, no figures are available as to the number of them in Oregon. But it is considerable. The tractor has become a very essential part of the equipment of the up-to-date farmer. Every progressive farmer, it can be said, who does not already own a tractor is looking forward to the time when he can own one.

The reason for this is the efficiency and many-sided usefulness of the modern tractor, which is quite a recent development of the gasoline age. The tractor idea is not new, but its application to small, economical, flexible units, adapted to the smaller farms, is an evolution of the past few years.

The early tractors were large, bulky, locomotive-like affairs, usually operated by steam. They were traction engines rather than tractors. They were costly to operate and required the attendance of an expert engineer. Naturally they came few and far between. One such traction engine would do a whole farming community, moving from farm to farm as required in the threshing season, about the only time it was ever employed.

The modern successors of these early tractors, now almost universally operated by internal combustion instead of by steam engines, still have their field, which is a most important one. But it is the field of the big ranches, thousands of acres in extent. There has come into general use in the past two or three years only, a much smaller type of gasoline, distillate or kerosene-burning tractor, designed and built especially for the small farmer. It is this type that is so fast bringing about the era of power farming in Oregon and other states.

A tractor of this type will have power sufficient to haul from two to four gang plows, according to the size of the tractor. But the actual work of plowing or harrowing is only a very small part of what it can and does do. Its versatility is practically unlimited.

Operation Is Simple.
To start it requires no long wait to get up steam, no mechanical expert at the throttle and no quart or two of oil. It is as simple in operation as an automobile and more economical. It has two modes of operation—one by direct drawbar pull, the other by belt.

trated in the case of plowing, when it hauls the plow. It can be used just as handily to haul other farm machinery from place to place, or to haul wagons loaded with wood from the woodlot to the house, or any other hauling job that a horse could do. Its use with belt is illustrated in the case of threshing, when a belt from the tractor operates the threshing machine.

There are literally a thousand and one ways about the farm in which the power of such a tractor may be used on the belt. As many different ways, almost as there are jobs to perform. It will operate the saw for sawing up wood. It can run a pump and many other things. And in doing this work, the tractor requires no special attention. It does not eat its head off in the barn on days when weather conditions will not permit work to be done. All it requires is reasonable shelter from wet weather and oil and fuel.

The remarkable versatility of the tractor is one of the main reasons for its so greatly increasing popularity. Its use is not seasonal. When there is no plowing to be done or no threshing, it can be operated at something else. There is no reason why a tractor investment should lie idle at any time, for the equipment is there to be used, and its use requires no expert skill. The tractor of today has been made even more nearly foolproof than the automobile.

Farmer Learns Value.
The Oregon farmer is rapidly learning the value of the tractor as part of his equipment. This is illustrated not only by the increasing number of tractors the traveler through the state by train or automobile will see

AREA EMBRACED IN CORPORATE LIMITS OF PORTLAND.	
Land area, including water	66.36
Water area, square miles	5
Harbor frontage, miles	25.62

on the farms, but by the vastly increased demand for them on farms dealing in tractors. Most of the principal makes of tractors, both large and small ones, are represented in Portland.

The main problem for the farmer about to buy a tractor is to select the one best fitted for his own peculiar needs. Generally speaking, there are two main types of tractors; the traction wheel type, which obtain traction direct from the driving wheels and the tracklaying type, the driving wheels

which move forward within and upon an endless track laid by the tractor itself. Each of these types is better fitted for some kinds of work than for others. And there is a size of tractor in each type for the needs of every farmer, from the one with 20,000 acres to the one with 50 or 100.

As in the case of the motor truck, it really required the war to bring the tractor into its own. During the war the shortage in man power, so especially acute on the farms, ushered in the era of power farming generally. Unable to obtain hands to help him, the farmer was obliged to turn to the tractor. And the tractor proved itself on the job.

In the great wheat country of eastern Oregon where the ranches are thousands of acres in extent, use of big tractors is not new. For a good many years these huge machines have been used over there to do the plowing, the harrowing, the seeding and the harvesting. Some of the ranches have whole batteries of them. They make the profitable operation of the big ranches possible. It is on the medium-sized and smaller

farms that the present trend toward the tractor is being especially manifested. And while good old Dobbin will never quite be banished from the farms, the use of tractors is more and more lightening his work and increasing returns to the farmer.

But farming is only one of the varied uses of the power tractor. It is used in Oregon in logging, in lumbering, in hauling and in road work. The progressive counties of the state now have their tractor roadbuilding equipment which, with as few as three or four men in a crew, will, in one

day, do several times the work that a tor road outfit is Lane, which is fit is especially complete. There the roads that are to be rerolled, but haul crew of 20 men was able to do before. noted for its good roads, Multnomah tractors not only tow road machinery trains of gravel wagons with un- Among the counties with such trac- and Columbia. The Lane county out- which scarpifies macadam or gravel terial for rebuilding roads that need it.

CONVERSE TIRES

"Miles Ahead"



Distributed by

FAILING-MCCALMAN CO.

88 Front Street

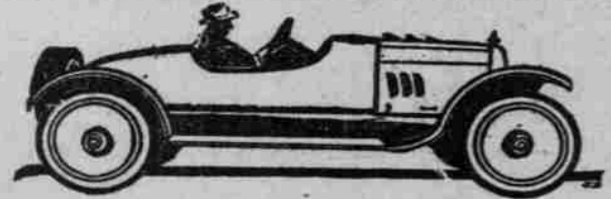
Write for Territory

Portland, Or.

BURNES & MARTIN RADIATOR SPECIALISTS

Our equipment and facilities for the efficient repairing and rebuilding of radiators are second to none in the Northwest.

SPEEDSTER BODIES

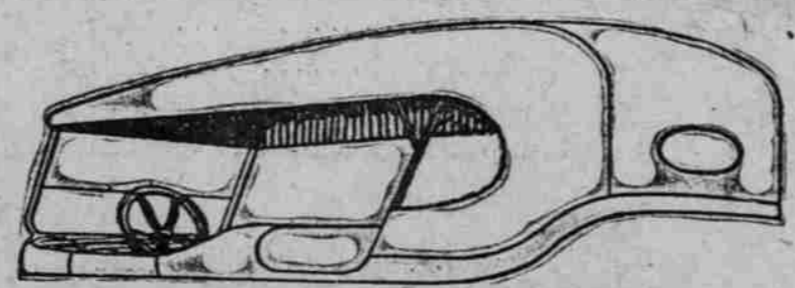


Our quantity production of standard speedster bodies enables us to turn out the best bodies at a minimum cost. The fact that we made more speedster bodies last year than all our competitors together, guarantees your satisfaction. Everything in the auto sheet metal line, such as BODIES, FENDERS, APRONS, etc., made and repaired.

OUR PRICES ARE THE LOWEST.

BURNES & MARTIN

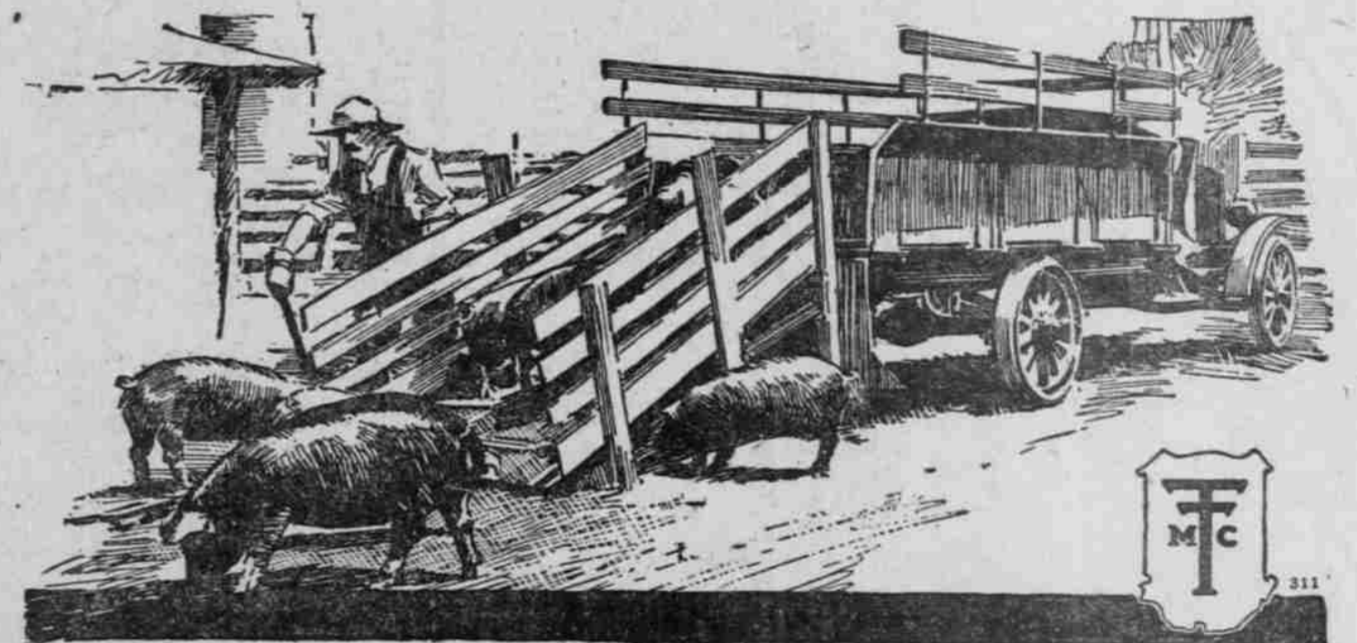
Fifteenth and Alder
Largest Radiator and Fender Plant in Oregon



AUTO TOPS

AUTO TRIMMING & UPHOLSTERING CO.
NOW IN OUR NEW LOCATION

409 Davis St., Bet. 9th and 10th Phone Bdwy. 2017
Equipped to handle any and all classes of Auto Tops, Side Curtains, Seat Covers, Top Linings, Plate Glass Lights
G. E. LENNOX T. J. BRANDT



\$1395

Chassis
f. o. b. St. Louis

Traffic Truck

4000 LBS. CAPACITY

The Lowest Priced 4000-lb. Capacity Truck in the World

Get your livestock to market in good condition. There's no loss in weight from shrinkage when it's hauled in a Traffic, which will deliver it in one-third the time it takes with teams and at half the cost.

Day by day, more and more, Traffic Trucks are being employed on farms because its capacity and design best fit the farmer's needs and the price fits his purse—it is the lowest priced 4000-lb. capacity truck in the world. Saves hundreds of dollars in first cost and hundreds of dollars in maintenance cost. See it today.

Rex Motor Co.

89-91 North Ninth

Portland, Oregon

Traffic Motor Truck Corporation, St. Louis, Mo., largest exclusive builders of 4000-lb. capacity trucks in the world.