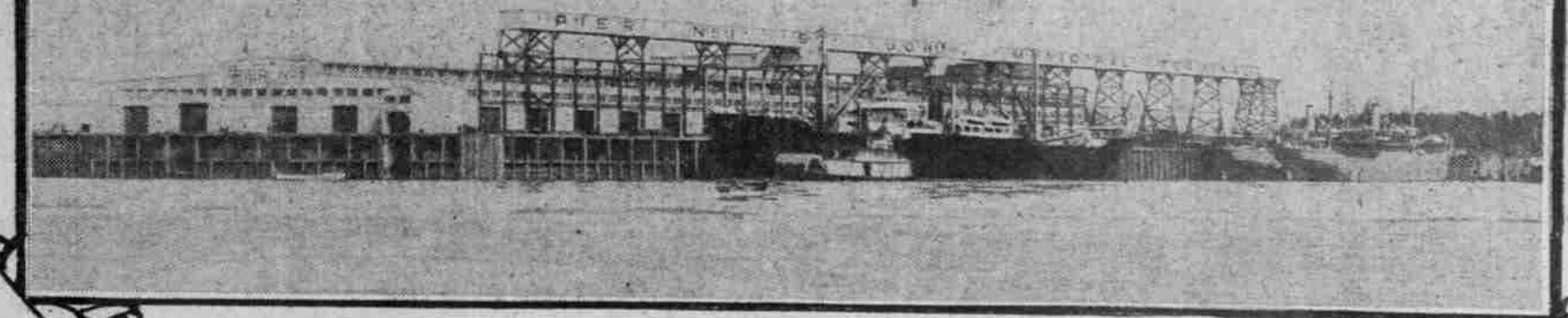
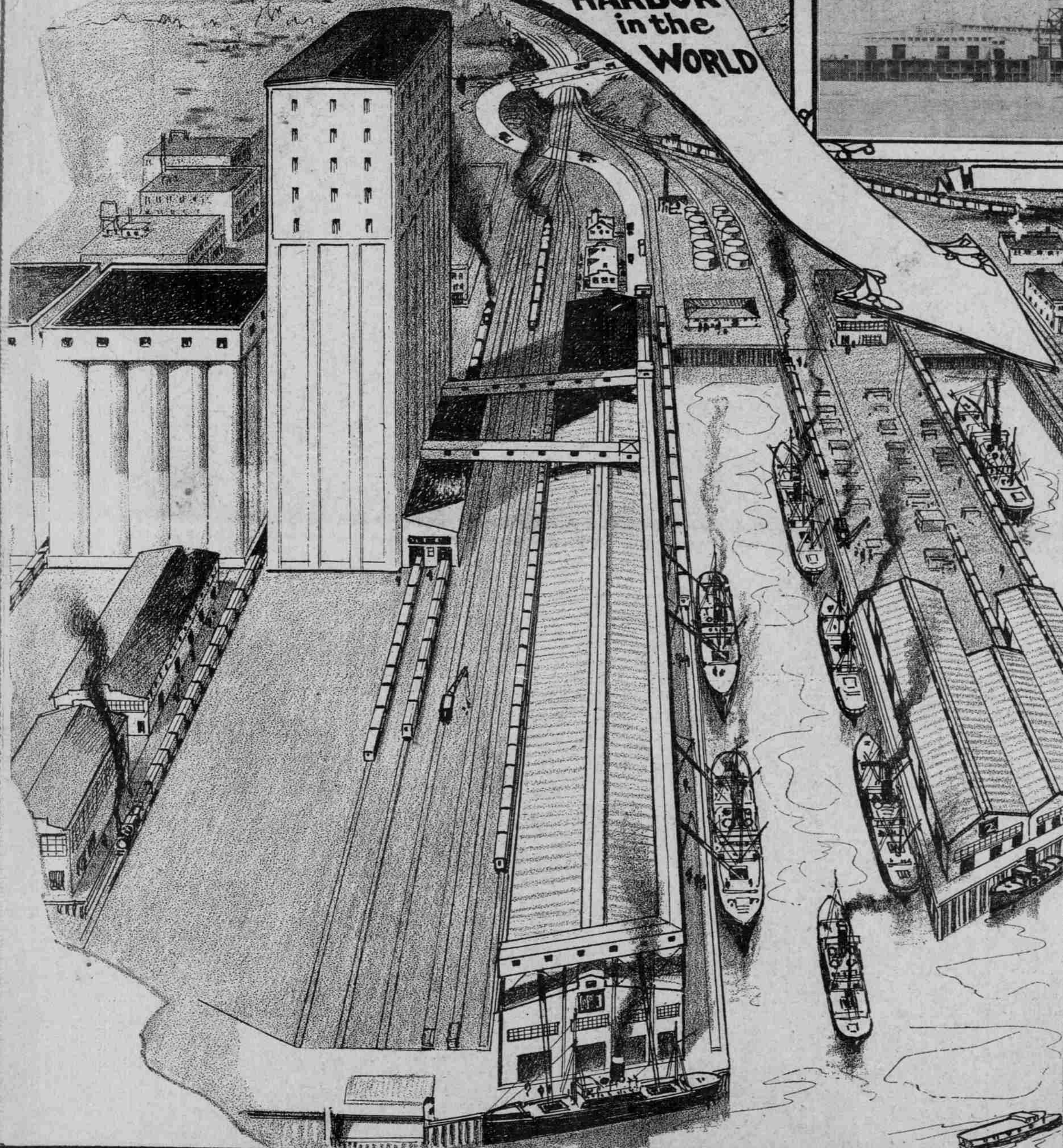


# Port of PORTLAND

OREGON  
U.S.A.

BEST  
Fresh-Water  
HARBOR  
in the  
WORLD

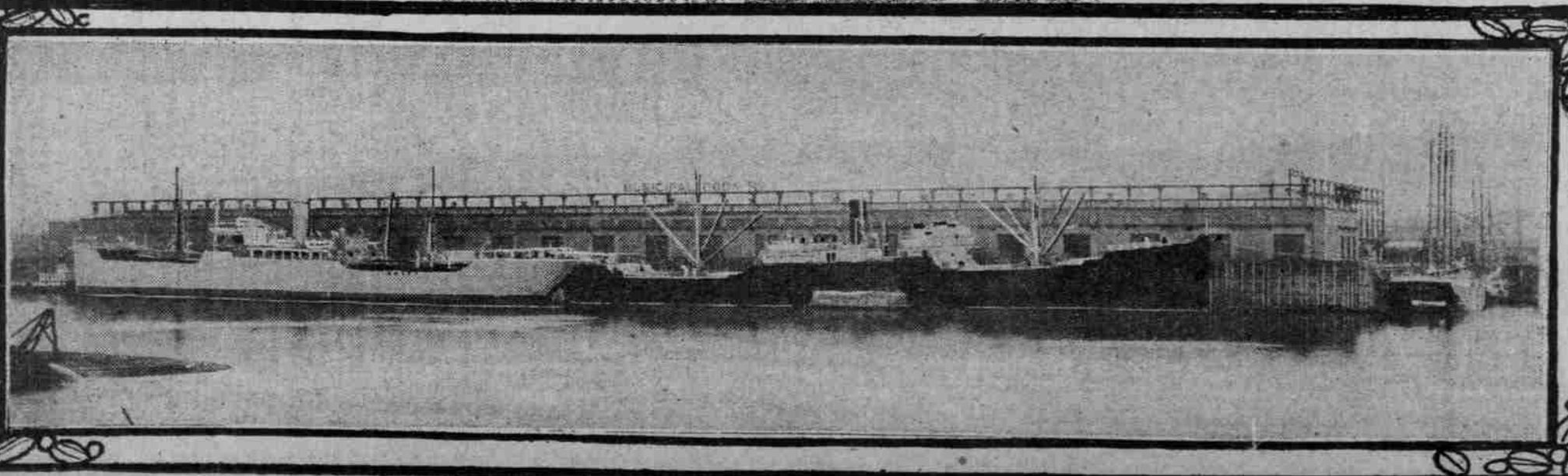


## PORTLAND

- a factor in world commerce.
- the gateway of a vast productive territory.
- offers cargoes for vessels of any tonnage.
- is the world's largest lumber-producing center.
- is the largest grain-shipping port on the Pacific coast.
- owns and operates large, thoroughly modern docks and terminals costing in excess of \$7,000,000.
- has a public grain elevator of 1,000,000 bushels' capacity, with ample private facilities.
- has vegetable oil tanks for bulk storage.
- has a public drydock accommodating vessels up to 10,000 tons; new 15,000-ton drydock authorized.
- has ample facilities for coaling vessels, loading or discharging.
- has extensive plants for shipbuilding and ship repairs.
- has favorable weather conditions the year round.
- has the only direct, water-grade rail connections for interior and overseas shipments on the Pacific.

*"The World's Sea Lanes Lead to the  
PORT OF PORTLAND, OREGON"*

THE PORT OF PORTLAND COMMISSION  
THE COMMISSION OF PUBLIC DOCKS  
PORTLAND, OREGON  
U. S. A.



WILLAMETTE  
RIVER