

NEED OF GREATER PORTS EMPHASIZED

Federal Engineer Lauds Proposed Development. CENTRAL CONTROL URGED

Colonel Slattery Says Appointment of Joint Committee Is Big Step Towards Goal.

In the appointment of a joint committee from the port commission and the dock commission, to act for the two port bodies in employing harbor engineer and formulating a comprehensive plan of harbor development...

Experienced Engineer Urged.

"The engineer selected should be a man of wide experience and broad vision who not only understands harbor improvement on a large scale, but also is capable of placing various industries in the most advantageous positions...

Colonel to Make Report.

"The only unfortunate thing about Portland's location is that it is not close to the state line. Much of the natural hinterland of this port, about half of it, in fact, is in the state of Washington...

FISHERMEN END STRIKE

SALMON FROM SIUSLAW AND UMPQUA AGAIN ON SALE.

Buyers Agree to Resume Old Schedule of 8 1/2 Cents Pound and Boats Go Out Again.

EUGENE, Or., Oct. 24.—(Special).—The fishermen's strike on the Siuslaw and Umpqua rivers has been called off, according to word received in Eugene yesterday.

NAVAL AVIATOR COMES HERE

Lieutenant Lee Assigned to Duty at Recruiting Station.

Lieutenant T. Burke Lee, U. S. N., a naval aviator who thrilled Portlanders with his performances in the air during the late Reno festival, arrived in Portland yesterday, detailed for temporary duty at the navy recruiting station here.

Pacific Coast Shipping Notes.

GRAYS HARBOR, Wash., Oct. 24.—(Special).—Captain R. E. Peasey, "Matt" Peasey of Peter R. Kyne store yard, will command a new tugboat schooner named built at the Matthews shipyard in Hoquiam, living up to the name of the Fred J. Wood, now loaded here for Australia, and which Peasey was to have taken to Australia. The schooner will have a very large lumber-carrying capacity and will be in the course of two months.

Freight for Germany Light

Steamer Effingham May Not Make Stop at This Port.

Unless freight for Germany and Belgium is offered here in much larger quantities than are promised at present, the steamer Effingham, bound from Pacific ports to Hamburg and Antwerp, and scheduled to land here early in November, will not call at this port, it was stated yesterday by the steamer's assistant manager, local operator of the vessel. Though some cargo has been promised here, said Mr. Hartwright, the amount is extremely meager, and at the present rate is not sufficient to warrant the vessel's stopping here.

Tides at Astoria, Saturday.

High 10:15 A. M., 10:15 P. M. Low 2:15 P. M., 2:15 P. M.

minial of the East Waterway Dock & Warehouse company the vessel will shift to pier 5 where she will be loaded for ports in the north by Frank Waterhouse & Co. As a new development in foreign trade, Hamilton Higday, of Rogers, Brown & Co., Importers and exporters, this morning received a telegram from San Francisco asking whether the Seattle Corporation could handle four live Siberian tigers and two live Siberian red foxes. The animals, all straight from the wilds of Siberia, were landed in San Francisco a few days ago by ship from Vladivostok. Two of the tigers are 5 years old, one is 4 years old and the fourth is 3 years old. Alteration to the steamer Brookdale of the shipping board, which will make her the first cargo training ship ever operated in the Pacific, is now in completion and the vessel is expected to be ready to start from Seattle next week, bound for Honolulu.

On her maiden voyage as a cargo training ship the Brookdale will be commanded by Captain Orison Beaton, with Captain T. Palmer as executive officer and H. C. Hagman as first officer. John Hallison will be the chief engineer, John T. Reese, first assistant, Charles E. Jones, second assistant engineer of the vessel.

ASTORIA, Or., Oct. 24.—(Special).—Bringing freight and passengers for Astoria and Portland, the steamer Rose City arrived at 7:35 this morning from San Francisco. Among the freight discharged here were 440 sacks of sugar.

COOS BAY, Or., Oct. 24.—(Special).—The steamer schooner Martha Buecher, with a lumber cargo loaded this week at the Buecher mill, departed this afternoon at 1 P. M. for San Francisco.

TACOMA, Wash., Oct. 24.—(Special).—The steamer Cripple Creek will commence loading flour here within a few days. The vessel which is being operated by Frank Waterhouse & Company will carry 10,000 tons of flour from the Tacoma Grain company plant.

On the outward voyage of the Jostin from Tacoma the steamer encountered a typhoon off the coast of China which landed the vessel roughly. The Jostin was buffeted about for 35 hours. She was not able to make any headway and when the storm passed was five miles from her position before the storm.

The Santa Alicia arrived here this morning to lead for west coast ports. The Glyndon, after taking Honolulu freight here, sailed for Honolulu this afternoon.

After being away from Tacoma for two years the schooner Levi W. Outlander, among the first of the vessels to be turned out at the Seaboard shipyard here, arrived back home last night and is now moored within a few feet of where she was constructed. The Outlander came here from Shanghai, making the passage across in 45 days from the Chinese port.

Bringing a valuable cargo and a large number of passengers, the Japanese steamer Fuchimi Maru arrived this morning, proceeding to Seattle. Among her passengers is a special train which will carry the delegates from Seattle to the national capital.

PORT TOWNSEND, Wash., Oct. 24.—(Special).—The Japanese power barge, the Yuba Maru, which is being discharged here, will discharge her cargo of coal, fish, and other goods at that point, will load sail to Seattle for their return voyages to Japan.

Bringing a valuable cargo and a large number of passengers, the Japanese steamer Fuchimi Maru arrived this morning, proceeding to Seattle. Among her passengers is a special train which will carry the delegates from Seattle to the national capital.

With the definite assignment yesterday of the 800-ton steel steamer Wawalon to be oriental service, of the Admiral line, arrangements were completed for sending three full cargoes out to the orient and receiving one from the far east before the end of November.

With the definite assignment yesterday of the 800-ton steel steamer Wawalon to be oriental service, of the Admiral line, arrangements were completed for sending three full cargoes out to the orient and receiving one from the far east before the end of November.

With the definite assignment yesterday of the 800-ton steel steamer Wawalon to be oriental service, of the Admiral line, arrangements were completed for sending three full cargoes out to the orient and receiving one from the far east before the end of November.

With the definite assignment yesterday of the 800-ton steel steamer Wawalon to be oriental service, of the Admiral line, arrangements were completed for sending three full cargoes out to the orient and receiving one from the far east before the end of November.

With the definite assignment yesterday of the 800-ton steel steamer Wawalon to be oriental service, of the Admiral line, arrangements were completed for sending three full cargoes out to the orient and receiving one from the far east before the end of November.

With the definite assignment yesterday of the 800-ton steel steamer Wawalon to be oriental service, of the Admiral line, arrangements were completed for sending three full cargoes out to the orient and receiving one from the far east before the end of November.

With the definite assignment yesterday of the 800-ton steel steamer Wawalon to be oriental service, of the Admiral line, arrangements were completed for sending three full cargoes out to the orient and receiving one from the far east before the end of November.

With the definite assignment yesterday of the 800-ton steel steamer Wawalon to be oriental service, of the Admiral line, arrangements were completed for sending three full cargoes out to the orient and receiving one from the far east before the end of November.

With the definite assignment yesterday of the 800-ton steel steamer Wawalon to be oriental service, of the Admiral line, arrangements were completed for sending three full cargoes out to the orient and receiving one from the far east before the end of November.

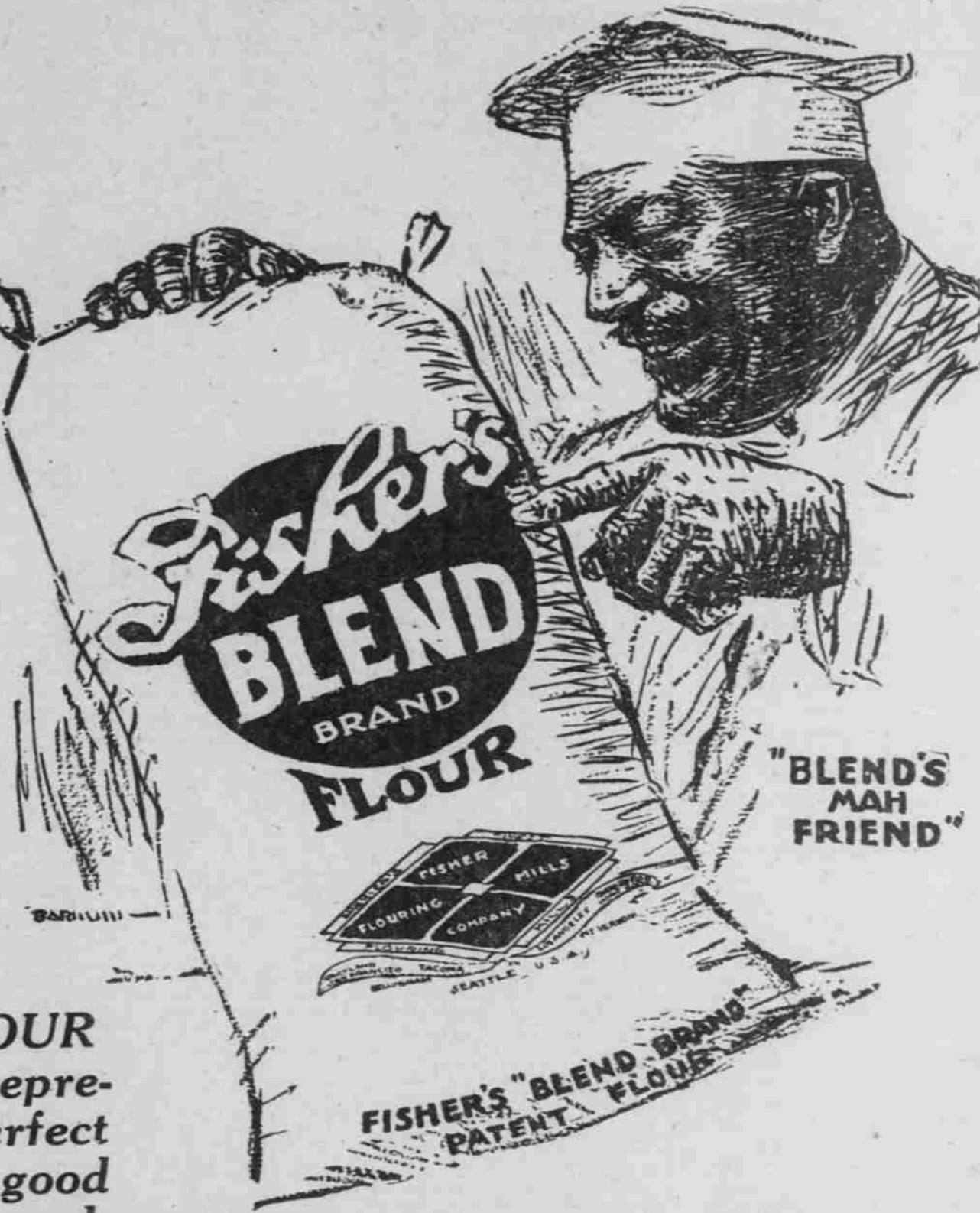


For Every Purpose

Fisher's BLEND FLOUR is e. actly as represented, a perfect Flour for every purpose; as good for cakes and pastry as for bread. It is made of choicest Eastern hard wheats and the choicest of Western wheats.

"America's Finest Flouring Mills" By Fisher Flouring Mills Company

Ask your local grocer for FISHER'S BLEND FLOUR; he has it or can easily get it; or we will see that you are supplied if you will communicate with our Portland office, 15th and Hoyt Streets. Telephone Broadway 3046.



Fisher's BLEND FLOUR is e. actly as represented, a perfect Flour for every purpose; as good for cakes and pastry as for bread. It is made of choicest Eastern hard wheats and the choicest of Western wheats.

"America's Finest Flouring Mills" By Fisher Flouring Mills Company

Ask your local grocer for FISHER'S BLEND FLOUR; he has it or can easily get it; or we will see that you are supplied if you will communicate with our Portland office, 15th and Hoyt Streets. Telephone Broadway 3046.

WABAN NOW IS LOADING

Steamer Coaxet to Discharge Cargo of Hemp and Oriental Merchandise Here Soon.

With the definite assignment yesterday of the 800-ton steel steamer Wawalon to be oriental service, of the Admiral line, arrangements were completed for sending three full cargoes out to the orient and receiving one from the far east before the end of November.

New Record Likely.

After the Waban has sailed and before the Wawalon has finished loading, the steamer Coaxet, which left Kobe for Portland October 12, will come to the St. Johns terminal to discharge a full cargo of hemp and oriental merchandise.

After the Waban has sailed and before the Wawalon has finished loading, the steamer Coaxet, which left Kobe for Portland October 12, will come to the St. Johns terminal to discharge a full cargo of hemp and oriental merchandise.

Movements of Vessels.

PORTLAND, Oct. 24.—Arrived at 5 P. M., steamer Rose City and Daisy Matthews, from San Francisco. Sailed at 9 A. M., steamer Wabalon, for San Pedro. Arrived at midnight, steamer Orem, from San Francisco.

Vessels in Port.

Waban, Pacific Steamship company, St. Johns municipal terminal. West Pocomet, Pacific Steamship company, Astoria. Siletz, Pacific Steamship company, Eastern & Western mill.

ASTORIA, Oct. 24.—Arrived at 7:30 and left up at 9:30 A. M., steamer Daisy Matthews, from San Francisco; arrived at 1:30 and left up at 1:15 A. M., steamer Rose City, from San Francisco; arrived at 9 A. M., steamer Orem, from San Francisco; sailed at 12:30 P. M., steamer Johan Poulsen, for Victoria.

SAN JUAN, Oct. 24.—Arrived—Steamer Bonifay, with engine trouble and sailed on October 25, from Portland, for Birkenhead.

PATAT, Oct. 21.—Arrived—Steamer Capines, from Portland, for London.

SAN FRANCISCO, Oct. 24.—Sailed at 5 last night, steamer Daisy, for Portland.

Marine Notes.

The wooden steamer Byfield, assigned to the Pacific Steamship company for operation, will go to Vancouver tomorrow to start loading ties at the Dalhousie mill for the United Kingdom.

AMUSEMENTS. TICKETS NOW SELLING. HEILIG Broadway at Taylor. Mat. Today, 2:15. LAST TONIGHT, 8:15. THE SELWYNS SERVE Tea for Three.

Orpheum THE BEST IN VAUDEVILLE. ONLY 3 NIGHTS, Sun., Mon., Tues. 10 to 11. U. S. JAZZ BAND.

ALCAZAR MUSICAL PLAYERS. Tonight, all week, Mat., Wed., Sat. The Musical Comedy Delight.

BAKER STOCK COMPANY. Mat. Today, 8:15. The Great Helms Comedy Success POLLY WITH A PAST.

PANTAGES MAT. DAILY 2:30. Mr. George Jones Presents "OH, TIDY".

LYRIC MEDICAL COMEDY. Mat. Daily, Tonight at 7 and 9. DILLON & FRANKS.

The Speed Limit Nonsense, Burlesque and Pretty Girls.

DANCE at RINGLER'S COTILLON HALL. Portland's Largest and Finest Ballroom.

UNCALLED-FOR ANSWERS. A-707, 794, 760, 712, 264, 479, 28, 309, 324, 429, 197, 597.

AUSTRALIA NEW ZEALAND AND SOUTH SEAS Via Tahiti and Hararonga. Mail and passenger service from San Francisco every 25 days.

EUROPE LIDELL & CLARKE 108 THIRD STREET. OREGONIAN Classified Advertisements in The Oregonian.