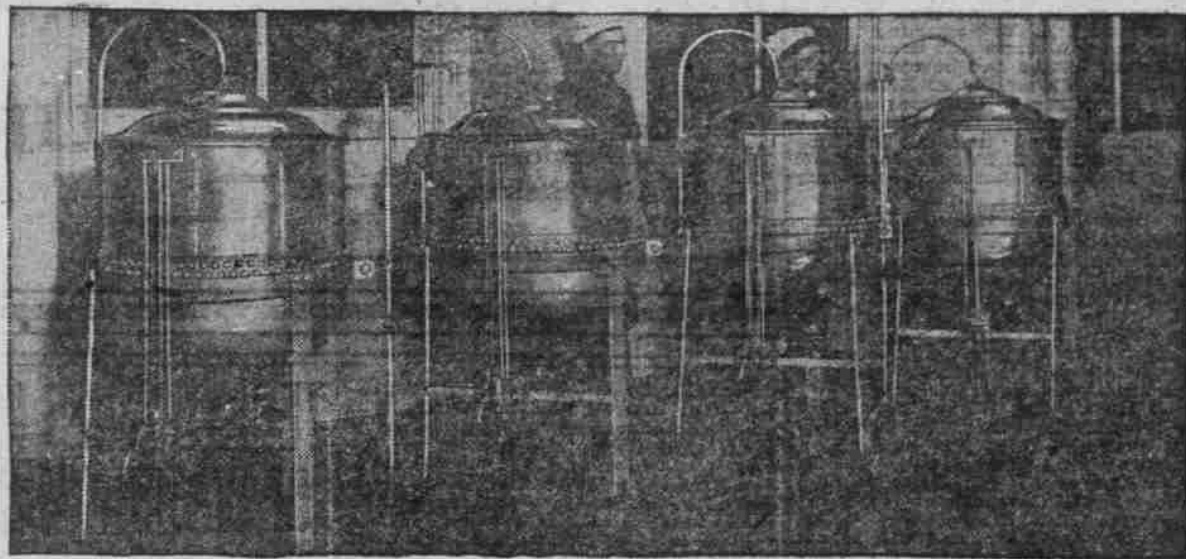
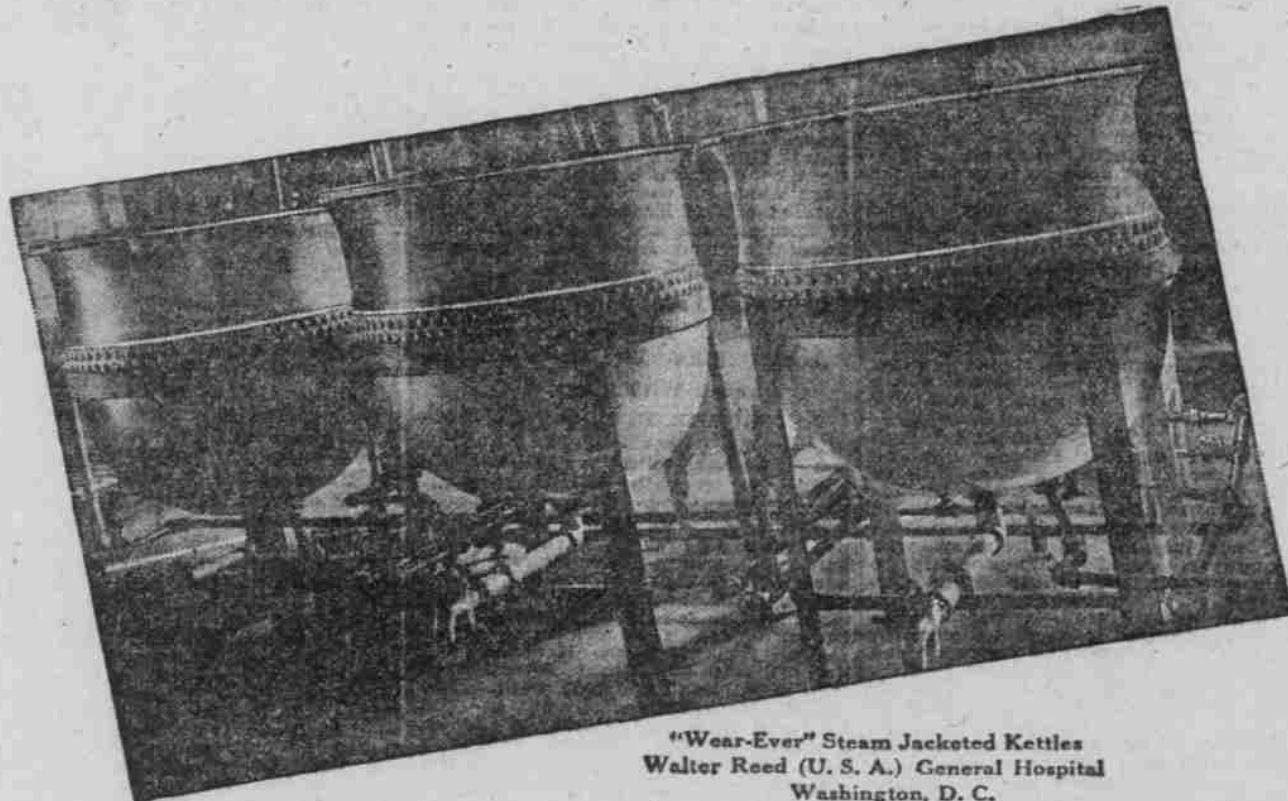


"Wear-Ever" Steam Jacketed Kettles
U. S. Debarcation Hospital No. 3—New York City



"Wear-Ever" Liberty Coffee and Tea Urns
U. S. Debarcation Hospital No. 3—New York City



"Wear-Ever" Steam Jacketed Kettles
Walter Reed (U. S. A.) General Hospital
Washington, D. C.



"Wear-Ever" Equipment Letterman (U. S. A.) General Hospital
San Francisco, Cal.

U. S. Government Hospitals

EQUIPPED WITH

"Wear-Ever"

Aluminum Cooking Utensils

The Walter Reed (U.S.A.) Hospital at Washington, D. C.; The Letterman (U. S. A.) Hospital at San Francisco, Cal., and the U. S. Debarcation Hospitals at New York City, where our wounded heroes are being nursed back to health, are furnished in the most modern and sanitary way.

Indicative of this is the presence of bright, silver-like, thoroughly sanitary "Wear-Ever" aluminum cooking utensils in the kitchens—utensils made of the same material and in the same way as those which rendered such dependable service during the war on battlefields, battleships and transports and in cantonments and hospitals.

"Wear-Ever" Equipment in the Walter Reed Hospital

2—No. 508 Saucepans	19—No. 860 Stock Pots with spigots
6—No. 510 "	80—No. 956 Pitchers
17—No. 612 Deep Saucepans	12—No. 882 Coffee Boilers
5—No. 814 Stock Pots	1200—No. 214 Cups
2—No. 818 "	1200—No. 215 Saucers
3—No. 853 " " with spigots	1200—No. 290 Plates
16—No. 854 " " " "	1200—No. 292 Bowls
6—No. 856 " " " "	2—40 Gal. Steam Jacketed Kettles
10—No. 858 " " " "	2—100 " " " "
	2—60 " " " "

"Wear-Ever" Equipment in the Letterman General Hospital

12—Special Food Carriers	35—No. 578 Coffee Boilers
1—50 Gal. Steam Jacketed Urn	20—No. 579 " " "
3—25 " " " Kettles	10—No. 580 " " "
3—50 " " " " "	70—No. 706 Sauce Pots
90—No. 32 Coffee Pots	25—No. 707 Stock Pots
60—No. 214 Cups	85—No. 708 " " "
60—No. 215 Saucers	40—No. 710 " " "
60—No. 290 Plates	40—No. 712 " " "
60—No. 292 Bowls	3—No. 713 " " "
30—No. 507 Sauce Pans	1—No. 836 " " with spigot
30—No. 508 " " "	4—No. 856 " " " "
30—No. 587 Covers	6—No. 956 Water Pitchers
30—No. 588 " " "	40—No. 964 Sauce Pots

"Wear-Ever" Equipment in the Debarcation Hospital No. 3

8—80 Gal. type 3 Steam Jacketed Kettles	24—No. 500—20" Round Braziers
2—60 " " " " "	25—No. 534—26 qt. Sauce Pans
1—40 " " " " "	25—No. 694 Covers
4—60 " Liberty Urns	20—No. 780—40 qt. Cruller Pans
20—No. 820—25 Gal. Stock Pots with Covers	20—Covers for Cruller Pans
20—No. 860—25 " " " and spigot	20—No. 407—7" Fry Pans
	6—No. 672—19 Gal. Mixing Bowls

"Wear-Ever" aluminum cooking utensils are made in one piece from thick, hard sheet aluminum without joints or seams. They have no coating to crack or chip—are pure and safe.

We thank those women who were patient during the war preferring to wait until it again became possible to secure the shapes and sizes of "Wear-Ever", then unobtainable as a result of Government requirements, rather than accept substitutes for genuine, beautiful "Wear-Ever".

The complete line of "Wear-Ever" utensils soon can be secured from your dealer.



Replace utensils that wear out
with utensils that "Wear-Ever"



The Aluminum Cooking Utensil Co., New Kensington, Pa.