

AMBASSADOR ISHII TO RETURN TO TOKIO

State Department Advised of Officials' Plans.

CONFERENCE IS ARRANGED

International Development Declared Not Factor—Announcement of Return Withheld.

WASHINGTON, April 15.—The state department was advised formally today of plans of Viscount Ishii, the Japanese ambassador to the United States, to leave here next month for Tokio.

State department attaches were informed several weeks ago of Viscount Ishii's plans and it was said today that recent international developments were not a factor.

There will be no official announcement for the present as to the ambassador's return to the United States. It is understood that will depend entirely upon developments after he reaches home.

NORMAL WORK TO BE GIVEN

Spokane High School Establishes Nine Weeks' Course.

SPOKANE, Wash., April 15.—(Special.)—A nine weeks' course in accredited state normal work will be given at the Lewis and Clark high school, beginning June 9.

The announcement was made today by Principal N. D. Showalter of Cheney and Principal H. H. Hart, who made arrangements for the extension division of the summer session of the state normal at Cheney to establish the branch here.

James A. Burke, principal of the Garfield school, will have charge of the review work in mathematics and academic work and the teachers for the professional or educational work will be picked from the staff of the normal.

LOUISE BRYANT IS BARRED

Salt Lake Withholds Permission for High-School Lecture.

SALT LAKE CITY, April 15.—Permission to speak in the auditorium of the west high school here was denied today to Louise Bryant, said to be the wife of John Reed, reputed Russian bolshevik representative in the United States.

Miss Bryant was to have lectured here tonight on "The Russian Revolution as I Saw It" but the board of education, after advising with Dave Gershon, department of justice agent here, refused permission for use of the school auditorium.

WALTER R. MAY IS CAPTAIN

Commission Given in U. S. Public Health Service Reserve.

OREGONIAN NEWS BUREAU, Washington, April 15.—Walter W. R. May, former assistant city editor of The Oregonian, today received a commission with rank of captain in the United States public health service reserve, having the grade of passed assistant surgeon.

The United States public health service is a branch of the military establishment.

Highway Estimate Prepared.

THE DALLES, Or., April 15.—(Special.)—It will cost approximately \$65,000 to connect the Columbia river highway through The Dalles, according to preliminary estimates prepared by City Engineer T. A. Garrow. Mayor P. J. Stadelman took the estimates to Portland today and will consult with the state highway commission. The link to the eastern city limits will cost \$25,000, that to the western city limits \$12,415, and construction to the Fourth-street bridge \$17,000.

Read The Oregonian classified ads.

ANNOUNCEMENT—THE ORIENTAL CAFE
The largest and finest Popular-Priced Northwest in...
Open 11 A. M. to 12:30 A. M.
SPECIAL LUNCH DAILY
Chicken or Turkey Dinner 25c
Hours 11 A. M. to 12:30 P. M.
Dishes Any Time Day or Night. All kinds of Soft Drinks.
CORN BROADWAY (stairs). Entrance 345 1/2 Washington.

BY ALL MEANS Have Your CAR WASHED BEFORE EASTER SIMONIZING OUR SPECIALTY
R. G. LYDY
WASHINGTON STREET PUBLIC GARAGE
First and Washington Streets

PEGGY

NEW VICTOR RECORDS FOR EASTER—SEVENTH FLOOR

THE FASHIONS : THE NEW ONES : THE BEST

There Is No Gainsaying the Fact That the Lipman, Wolfe EASTER ASSORTMENTS Are the Best Ever Shown to the Portland Trade

—Suit buying is done by types here, not the easy way, by sizes. The short-waisted woman, the long-waisted woman, the short, stout woman, the regular size woman will find suits built especially to become her. And not only suits, but frocks and coats and dolmans; in a word, all garments are selected with the "type" idea in mind.

The New Peplum Blouses at \$12.50, \$15, \$16.50

—You've been seeing just such blouses illustrated in the fashion magazines of highest authority.



As Sketched. Third Floor—Lipman, Lipman, Wolfe & Co.

—Dainty Georgettes with the simplest trimming imaginable. For instance: A blue Georgette in peplum style is collarless and has large moons of blue embroidery; self-toned. A white Georgette has a row of white fringe about the neck, looped back upon itself, and several rows around the peplum. A third has the tiniest of frill to outline its neck and peplum, and there are many others equally smart.

—They're in Victory red, League blue, biscuit, beige, white, flesh and maize; orchid.

Much Wanted Klocked Pure Silk Hose—\$3.50

—Due to labor conditions in the east we have had difficulty in securing silk hose, and this shipment of the very kind that women have so insistently demanded comes as a welcome relief to the situation.

—Some of these are all silk, others have silk lisle garter tops and soles, and all with reinforced garter tops.

—They are black, white, cordovan, navy, gray and ivory, with handsome klockings in contrasting colors. Full line of sizes.

Street Floor—Lipman, Wolfe & Co.



As Sketched.



As Sketched.

For Instance—In Suits at \$60 There Is Delightful Variety of Style

—There are many of the newer type blouse suits and modified box suits that are gaining in favor right along. These are of serge or Poiret twill, in the most wanted shades.

Then, Homespun Suits Are Here, Too

—Those smart, mannish homespun suits that are so trig and tailored; with their pinch backs and box pleats they're wondrously swag-gar.

Checked Velours Find Instant Favor—

—Smart, plain tailored checked velours that are so popular with well-dressed women always. They are in black and white and blue and gold. Priced \$37.50 to \$50.

And Charming Frocks of Distinction

—There is seemingly no end to the smart new frocks that are coming in. Delightful models of Georgette and foulard and taffeta and jersey and serge; frocks that reflect the very smartest of the new. Prices range from \$29.75 to \$150.



As Sketched.

NEW

—With so much that is new, fresh and radiant with the joy of spring-time, it is difficult to confine ourselves to a few brief items. Below, however, are just two or three of the lovely new things. We hope that you will avail yourself of the opportunity to inspect the new merchandise that arrives daily.

New Veilings to Charm

—Do come in and see the latest fancies in the veiling vogue; bordered motifs aplenty, and a new assortment of fluffly chenille dotted veilings—65c to \$1.75 yd.

Street Floor. Lipman, Wolfe & Co.

Novelty Jersey Petticoats, \$6

—Fringe, square blocked and Van Dyke points; such interesting color combinations as orchid and pearl; old rose and Pekin; league blue and beige; beige and sunset, and others.

Third Floor. Lipman, Wolfe & Co.

Black Boudoir Caps—New

—Plain or dotted black silk net; some are lined with gold net, others are adorned with tiny frills of silk; two-tone Lady Fair ribbon supplies the touch of color that stamps them as being typically French; fetching styles they are, and most becoming.

Third Floor. Lipman, Wolfe & Co.

Sends EXCLUSIVE New Model Hats That We May Sell for \$12.50, \$15, \$20

—And as everyone knows, it is indeed rare to buy "Joseph" creations at such prices. And we would add, too, that Lipman-Wolfe's is the only store in Portland at which these models from this famous designer can be bought.

—And besides these Joseph hats we have countless other models for Easter.

—Tailored and dress hats designed by our own clever milliners.

—Hats in a range of price from \$5 to \$75



As Sketched.

Third Floor—Lipman, Wolfe & Co.

—These models are distinctive, individual in shape, with the smartest touches of trimming; just the right touch to give that indefinable quality, chic.

—Small, medium, large; every size, every style; black and every color that is in vogue is featured.

—Tailored and dress hats; individual styles; wonderfully smart and becoming and very specially priced.

La Vida Corsets For All Types

—Have the correct foundation for your costume and its lines will conform naturally with the graceful silhouette demanded today.

—La Vida corsets are designed for all types of figures, and are made of coutil, fancy brocades or satin. Priced from \$5 to \$12.50.

—Fitted by expert corsetiers.

Fourth Floor—Lipman, Wolfe & Co.

Splendid Choosing In Easter Gloves

—Easter week is the time for buying new gloves, when, as women who know the shops are well aware, stocks are newest and most comprehensive.

—At this store the lines are unusually complete and include whatever is the newest in style, color and quality.

—That Lipman, Wolfe & Co. is the best place to buy gloves at all times is proven by the hundreds of women (and men, as well) who buy gloves here exclusively.

Street Floor—Lipman, Wolfe & Co.

New Dolmans to Meet The Easter Demands

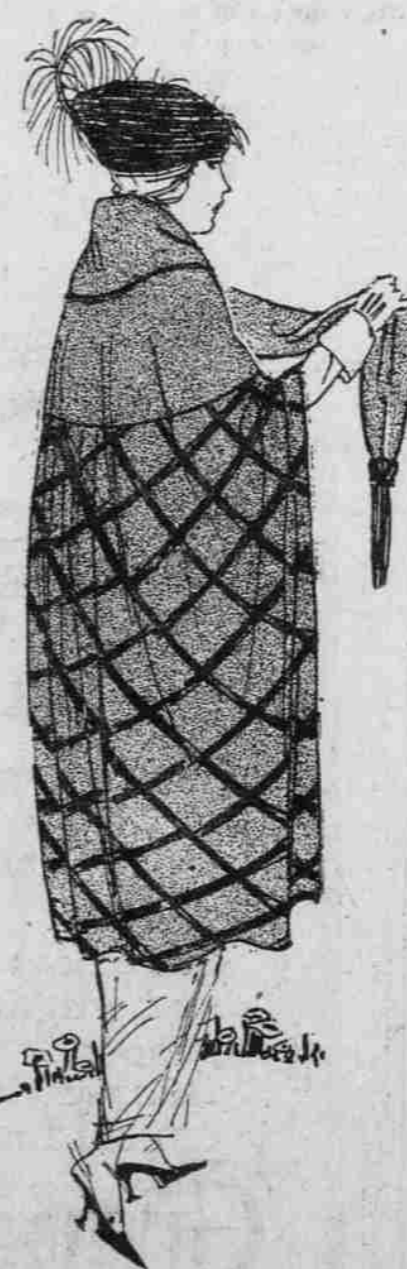
—Charmingly new models in these popular wraps. All the little touches that characterize the late spring garment; velvet and button and cord trimming. They are delightfully becoming.

New Capes to Flaunt the Easter Breezes

—Capes have grown in favor, and in smartness, too, as the springtime advances. Some wonderfully clever and new models in all the popular shades and styles.

New Papillon Coats Have Just Come

—Many women who want the effect of a cape, yet are not impressed with Dolmans, find the exact garment they want in these charming butterfly coats, and the latest arrivals are wondrously smart and lovely.



As Sketched.

A Whole Fourth Floor Shop of Misses' Clothes

—When an entire shop is devoted to supplying the needs of girls from the little ones to the miss in high school or college, it is but natural that it is best fitted to serve youth, and "youth will be served."

—Girls are demanding that their mothers bring them here to be outfitted, for, with the quick perception of youth, they are discovering that there exists in our garments that much-wanted style—quality, defined by the French term, "chic"—combined, too, with the practicability that mothers approve.

—Bring YOUR daughter here for here Easter and future outfits; you will both be satisfied as to style, service and price.

Fourth Floor—Lipman, Wolfe & Co.



As Sketched.