

FORTY PERISH AS SHIPS MINES

Transports and Trawlers Sunk Within Sight of City of Marseilles.

U. S. PATROL BOAT ASHORE

Steamship Cork Torpedoed Without Warning—Seven Passengers and Five Members of Crew Lose Their Lives.

PARIS, Jan. 28.—Forty lives were lost through the sinking of the freight transport Drome, and the trawler Kerbihan, which struck mines January 23, within sight of Marseilles.

EAST SWEEP BY WINTER'S BLASTS

Severe Snow Storm Completely Blocks Railroad Lines in Pennsylvania.

NEW YORK IS HIT AGAIN

Freight Service in Anthracite Regions Is Stopped—Chicago Suffers From More Cold Weather. Trains Behind Schedule.

E. C. MEARS IS PRAISED

FORMER BANKER NOW PAYMASTER IN UNITED STATES ARMY.

Clipping From Des Moines Tribune Says Portland Man Handles More Than \$1,000,000 a Month.

Under a caption reading, "Wealthy Men Give Up Big Positions to Serve Uncle Sam," the Evening Tribune of Des Moines, Ia., recently paid compliment to E. C. Mears, former Portland banker, now captain in the 88th division, United States Army, stationed at Fort Dodge, Iowa.

WOMAN POLICE OFFICER

MRS. ELLEN O'GRADY NAMED FIFTH COMMISSIONER.

BARRAGE FIRE DISCHARGED

Artillery Brigade at Camp Kearney Does Perfect Work.

L. J. SIMPSON IS BOOMED

Coos Bay Friends Work for Governorship Nomination.

PEACE TALK DISCREDITED

Austria-Hungary Charged With Trying to Trifle With U. S.

MEXICANS MOVE ON YAQUIS

Two Thousand Cavalry Start Overland From Juarez for Sonora.

HOOPER ASKED TO MOVE FRUIT

HOONOLULU, T. H., Jan. 28.—(Special.)—The Territorial Food Commission has asked Herbert Hooper, food administrator, asking him to take steps to move the large banana crop of these islands to the mainland.

JOY RIDES ARE WEAKNESS

INMATE OF STATE REFORM SCHOOL ESCAPES IN STOLEN MACHINE.

OFFICERS APPREHEND YOUTH AT HOME IN OREGON CITY AND RETURN HIM TO CAPITAL TO FACE STATE CHARGE.

OREGON CITY, Or., Jan. 28.—(Special.)—Tommy Moore, whose automobile thefts have kept local officers guessing for some months past, and who has been an inmate of the State Reform School for the past year, when breaking out and escaping in some one's auto, left the Warren place in Mount Pleasant, where the gasoline gave out.

MILLMEN VOTE APPROVAL

Eight-Hour Day Favored by Lumbermen of Bend Union.

BEND, Or., Jan. 28.—(Special.)—That the enforcement of an eight-hour day in the timber industry of the Northwest, leaving the rest of the industry in other parts of the country, is the present schedule, would work a hardship is agreed by the local Timber Workers' Union.

CITY DICTATES PRICES

PRODUCE IN PUBLIC MARKET UNDER SUPERVISION.

Particular Attention to Be Given at Once to Apples, Which Vary Greatly as to Quality.

RECLAMATION HEADS MEET

Managers of 32 Government Projects Gather in Denver.

TELEGRAPHERS ASK RISE

Living Costs to Govern Wages During War, Says Secretary Lane.

MARSHFIELD YOUTH PROMOTED.

MARSHFIELD, Or., Jan. 28.—(Special.)—William Durrant, a Marshfield boy, who had followed logging for a number of years, enlisted as a private in the regular Army last July and is now in line for promotion to a Second Lieutenant. He advanced rapidly

MARSHFIELD DOCTOR TRANSFERRED.

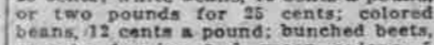
MARSHFIELD, Or., Jan. 28.—(Special.)—Dr. E. E. Straw, who had been training at Fort Riley, Kansas, has been transferred to the Thirty-second Engineers Corps at Camp Grant, Rockford, Ill. Word has been received that the engineers at Camp Grant are soon

OUR GUARANTEE

Your grocer will refund the full price you paid for MJB Coffee, if it does not please your taste, no matter how much you have used out of the can

Most Economical Coffee You can buy

Ask your grocer



Ask your grocer

Sipman Wolfe & Co. Merchandise of Merit Only

They're Altogether Different These New Striped Voile BLOUSES

\$3.75, \$4.50 and \$5.00 —They are charmingly individual both in coloring and in design. Built like a man's shirt over the shoulder, they assert their feminine daintiness in sheer organy collars, cuffs and vests or in deep shawl collars that are quite ravishing.



—SUCH COMBINATIONS OF COLOR AS LAVENDER AND GREEN, GOLD AND BLUE AND ROSE, GOLD AND BLUE, GREEN AND WHITE, BLUE AND WHITE AND ROSE AND WHITE—SOME WITH SATIN STRIPES.

Second Floor—Lipman, Wolfe & Co. Third Floor—Lipman, Wolfe & Co.

MARTEX TOWELS

Special at 1/4 to 1/3 Less

SECONDS OF A VERY FINE QUALITY

—Every size is included, from generous sized bath towels to the small guest size. The only imperfections are tiny oil spots or stains; nothing to mar appearance or serviceability.

Second Floor—Lipman, Wolfe & Co.

Cotton Taffeta PETTICOATS

At \$1.35 At \$1.79 —Petticoats of Fifth avenue cotton taffeta that has the shimmer of silk. In fancy checks and floral patterns and fine stripes; lavender, green and blue.

Fourth Floor—Lipman, Wolfe & Co.

Woolen KNITTING NEW RUGS

—By special permission from the makers of Minerva yarns—we are able to offer WOOLEN KNITTING at 75c for a full sized hank. —We want to give all patriotic knitters a chance to buy the BEST WOOLEN KNITTING for the sweaters and scarfs that will go to our boys in blue and khaki. —Head Cross Auxiliaries' orders filled up to Wednesday night. —Fifth Floor, Lipman, Wolfe & Co.

Correction In The Sunday Oregonian the Knitting read 75c for 2-oz. hanks. This should be 75c for 4-oz. hanks.

Magazines and Subscription Stand—Main Floor, Left of Elevators

ALL CHARGE PURCHASES TODAY AND BALANCE OF MONTH GO ON FEBRUARY BILLS PAYABLE MARCH 1

OREGON SHOWS THRIFT

STAMP SALES AT END OF WEEK AMOUNT TO \$612,734.74.

State Organization Getting Results and Every Indication Seen That Year's Quota Will Be \$17,000,000.

With total thrift stamp and war savings stamps sale at the end of the week amounting to \$612,734.74, with especially big gains being made in counties outside of Multnomah, there is every indication that the state organization is beginning to get results and that the momentum is going to increase today.

NO RAISE IN PRICE OF THIS GREAT REMEDY

CASCARA QUININE

The standard cold cure for 25 years—in tablet form—safe, sure, no opiate—cure cold in 24 hours. Money back if it fails. Get the genuine box with Red top and Mr. Hill's Bromide.

At Any Drug Store

BELL-ANS

Absolutely Removes Indigestion. Druggists refund money if it fails. 25c

Use Sensitive After Shaving.

Use Sensitive After Shaving.

Use Sensitive After Shaving.

Use Sensitive After Shaving.

Use Sensitive After Shaving.

IF KIDNEYS ACT BAD TAKE SALTS

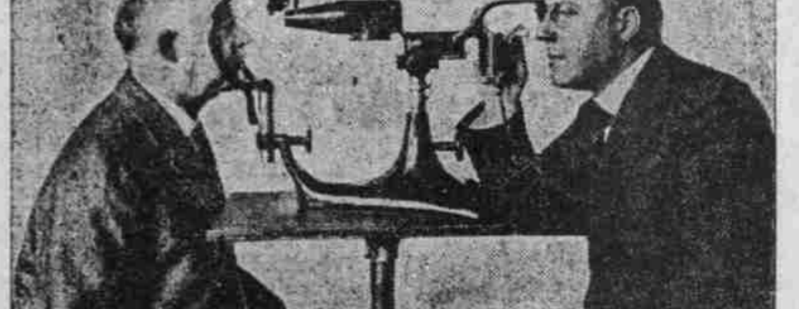
Says Backache Is Sign You Have Been Eating Too Much Meat.

When you wake up with backache and dull misery in the kidney region it generally means you have been eating too much meat, says a well-known authority. Meat forms uric acid which overworks the kidneys in their effort to filter it from the blood and they become sort of paralyzed and foggy. When your kidneys get sluggish and clog you must relieve them, like you relieve your bowels; removing all the body's urinous waste, else you have backache, sick headache, dizzy spells, your stomach sour, tongue is coated, and when the weather is bad you have rheumatic twinges. The urine is cloudy, full of sediment, channels often get sore, water scalds and you are obliged to seek relief two or three times during the night.

Either consult a good, reliable physician at once or get from your pharmacist about four ounces of Jad Salts; take a tablespoonful in a glass of water before breakfast for a few days and your kidneys will then act fine. This famous salt is made from the acid of grapes and lemon juice, combined with lithia, and has been used for generations to clean and stimulate sluggish kidneys, also to neutralize acids in the urine so it no longer irritates, thus ending bladder weakness.

Jad Salts is a life saver for regular meat eaters. It is inexpensive, cannot injure and makes a delightful, effervescent lithia water drink.—Adv.

Bring Your Eye Troubles to Experienced Men if You Want the Best Service



Our Ophthalmoscope and Retinoscope is one of the most scientific eye-testing instruments in the world.

Scientific Knowledge

of the highest order is required to recognize and properly correct defects of vision.

It is extremely unsafe to permit anyone not thoroughly qualified to test your eyesight or to prescribe glasses for you.

Not only is this expert knowledge necessary; the latest scientific instruments and appliances are required and years of applied experience to make the result of the examination absolutely certain.

Our many years' experience in scientific eyesight testing, fitting and making perfect glasses is at your disposal. Complete lens grinding factory on premises.

SAVE YOUR EYES

THOMPSON OPTICAL INSTITUTE

Portland's Oldest and Largest Exclusive Optical Place

Established 1901 209-10-11 Corbett Building, Fifth and Morrison

RHEUMATIC PAINS QUICKLY RELIEVED

As Well as All Other External Aches and Pains.

Stop that suffering by applying refreshing, relieving, penetrating Sloan's Liniment. Its counter-irritation quickly does away with swellings, inflammation, stiffness, bruise-soreness.

You don't rub it in—just apply and it penetrates. Clean, leaves no muss, won't stain skin. Economical, too. Any drug-gist will give you a very generous sized bottle.

Sloan's Liniment

KEES PAIN