

UNIT OF RAILWAY EARLY COMPLETED

Washburn Objective Point for This Year of Road Headed for Tillamook Country.

FINE TIMBER BEING TAPPED

Line Surveyed to Have Maximum Grade of 2 Per Cent and Extensive Logging Operations Are Due to Start This Fall.

Construction of the Gales Creek & Wilson River Railroad, which is destined to furnish a new route to Tillamook, has been under way for four months and the first 10-mile unit, costing \$300,000, will be completed before the next season sets in.

The line connects with the United Railways at Wilkesboro and will be built this year to Washburn, a new settlement in the heart of the rich timber district.

The route of the new road is almost due west from Wilkesboro, which is the terminus of the United Railways, it follows the meandering of Gales Creek well toward the summit of the Coast range, but does not attain the summit.

The line has been surveyed to Tillamook and eventually the road will be extended to that city. When the Tillamook extension is built a new and easy route between Portland and the Tillamook country will be provided.

The survey maintains a maximum grade of two per cent, with freedom from excessive curvature. The route down the western slope of the Coast range is along Wilson River, which it crosses several times.

That part of the road now under construction requires some extensive frostic construction, a number of heavy hills and deep cuts. The work being done, however, on the standards of modern railroad construction, so that the project can serve, when called upon, as a part of the through line between Portland and Tillamook.

Porter & Conley are the contractors on the work now under way. Arrangements have been made to transport logs over the new road to Linnton, where they will be milled. Final agreements for this purpose will be made with the United Railways.

The new logging operations at Washburn are expected to result in the establishment of a thriving little community there.

It is intended to complete only the first 10-mile unit this year, but another link may be built next year. The Gales Creek & Wilson River Railroad Company is a Portland project, but has been financed principally in the East.

John Pearson is president; Ralph E. Williams, vice president; Jesse Stearns, secretary, and J. R. Hurlbut, assistant secretary and treasurer. These, with L. M. Clark, comprise the board of directors.

Albany Officers on Leave. ALBANY, Or., Aug. 19.—(Special.)—Lieutenants Lee Bennett and Frank C. Steinhilber, commanding the recent training camp at San Francisco, arrived here yesterday on a brief furlough before reporting for active service.

Portland, Aug. 19.—(Special.)—Maximum temperature, 85 degrees; minimum, 52. River readings, 6 feet; change in last 24 hours, -.01 foot. Total rainfall, 0.2 P. M. to 5 P. M., .01 inch; total rainfall since September 22, 2.13 inches; normal rainfall since September 22, 44.80 inches; deficiency of rainfall since September 22, 42.67 inches.

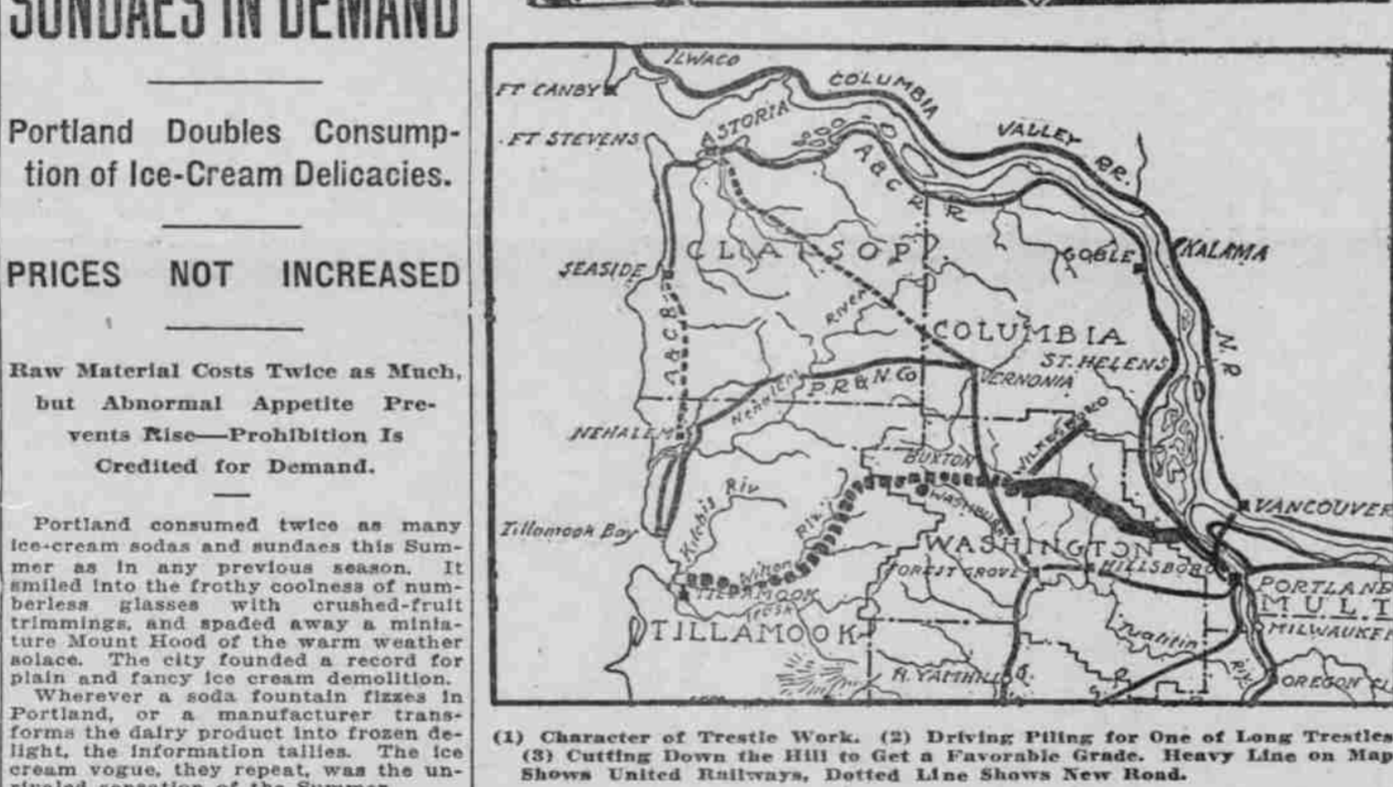
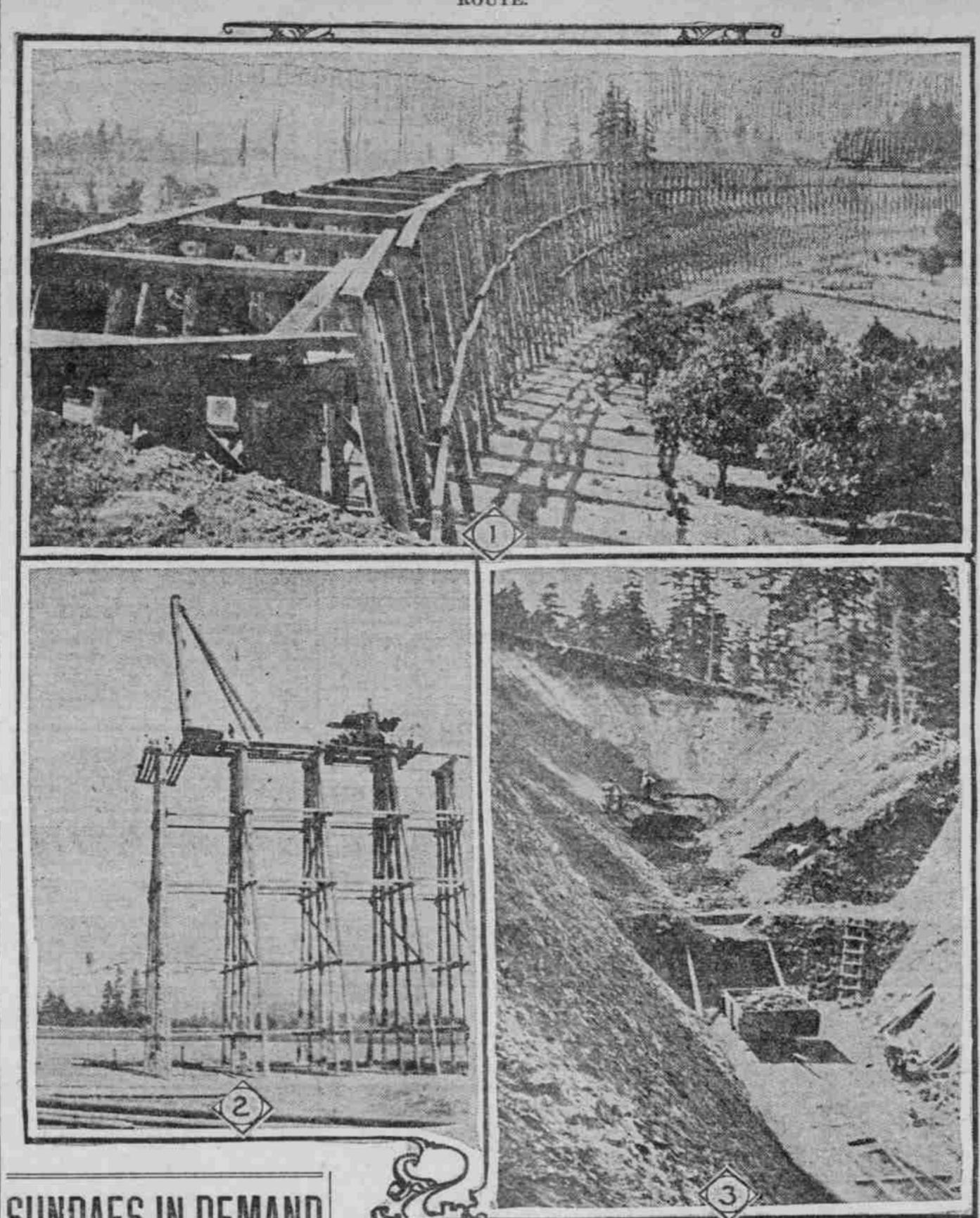
Portland consumed twice as many ice-cream sodas and sundaes this summer as in any previous season. It smilled into the frothy coolness of numberless glasses with crushed-fruit trimmings, and spaded away a miniature Mount Hood of the warm weather sojourn. The city found a record for plain and fancy ice cream demolition.

Wherever a soda fountain flazes in Portland, or a manufacturer transforms the dairy product into frozen delight, the information tallies. The ice cream vogue, they repeat, was the unrivaled sensation of the summer.

Although no dealer or manufacturer increased the doubled demand, the increase in ice cream sale held the fort against the increase in cost of cream and other materials and enabled the host of devotees to have steadily increased.

Anticipating an increase in cost, retailers of ice cream early in the season dispensed with delivery services and established convenient district agencies throughout the city. Moreover, they say such a step was rendered doubly necessary by the fact that most of their motorcycle delivery forces resigned to enlist with the colors.

SCENES ON NEW PORTLAND-TILLAMOOK LINE NOW UNDER CONSTRUCTION, AND MAP SHOWING ROUTE.



(1) Character of Trestle Work. (2) Driving Piling for One of Long Trestles. (3) Cutting Down the Hill to Get a Favorable Grade. Heavy Line on Map Shows United Railways, Dotted Line Shows New Road.

SUNDAES IN DEMAND

Portland Doubles Consumption of Ice-Cream Delicacies.

PRICES NOT INCREASED

Raw Material Costs Twice as Much, but Abnormal Appetite Prevents Rise—Prohibition Is Credited for Demand.

CREAM ADVANCES 50 PER CENT

Raw cream advanced more than 50 per cent during the season. It is now quoted at \$1.40 a gallon. Yet the dish of ice cream remained unchanged in price, portion or quality.

PROHIBITION HELPS SALES

But prohibition, it is conceded by dealers, played a prominent part in the increase of ice-cream patronage. Men found at the soda-fountain bar a pleasant and nutritious substitute for the tall beers of other days.

UNIT MINERS RETURN TO WORK

BELLELEVILLE, Ill., Aug. 19.—A coal mine which had been closed for several days because of a strike of miners has reopened today.

STANDARD TO RAY PLS NEXT WEEK

First Locomotive Reaches New Railroad Project One Year After First Proposal.

KLAMATH INDUSTRY HUMS

Removal of Two Big Steamships Makes New Railway South From Portland Absolutely Necessary, Says Promoter.

Robert E. Strahorn, who is conducting active operations on his new railroad project at Klamath Falls, returned to Portland last night after an absence of nearly two months.

The work is progressing very satisfactorily. Every mile of track 20-mile unit is now covered by contractors, who have made such good progress that tracklaying will be completed in a few days.

On his way to Portland Saturday Mr. Strahorn met the first locomotive for his new road proceeding under its own steam over the summit of the Siskiyou south of Ashland.

Other equipment now is on the ground and all material is coming along in good shape. One four-mile stretch of the line has been completed.

Other plants are to be built along our line as quickly as we can furnish the transportation. The Pelican Bay Lumber Company is building 18 miles of railroad to reach timber for its increased demands.

It is now in form and will be presented to Mayor Baker and Commissioners Harbur, Bigelow and Kellaher, and will ask that this measure be passed with an emergency clause.

Dr. Parrish announced that he would start an investigation today that will determine whether any river water is being used for ice.

Mr. Daniels declared yesterday that the piece of ice from which the analysis was made was manufactured from Bull Run water, but that it had been contaminated from an overhead pipe.

When man breathes he uses his muscular strength to draw in the air and it is afterward forced out automatically. With insects, as a German investigator has just discovered, this process is just reversed.

Man Slain; Partner Gone Harvest Hand Oregon Bound Found Dead Under Wagon.

BILLINGS, Mont., Aug. 19.—The body of Karl Heiman, a harvest hand from North Dakota, was found under his wagon near Columbus, 40 miles west of here, this noon with the skull crushed.

ICE CASE IS PUSHED

Arrest of W. N. Daniels Predicted by Health Officer.

RIGID LAW IS PROPOSED

Head of Company Found With Impure Product Declares It Was Contaminated by Accident and Was Not for Sale.

City Health Officer Parrish will hold a conference with State Dairy and Food Commissioner Mickle and Municipal Investigator Humason at the City Hall this morning at 9 o'clock.

Acting under section 19 of the session laws of 1917, prohibiting the sale, or offering for sale, of adulterated food or drink, Dr. Parrish yesterday announced the issuance of a warrant issued for the arrest of W. N. Daniels, president of the Liberty Coal & Ice Company.

A case of ice was taken by attaches of the Bureau of Health from the product of the Liberty Coal & Ice Company last week and placed with the City Bacteriologist Fernot for analysis.

It was this specimen and the resultant analysis that caused City Commissioner Mann, who has charge of the Bureau of Health, to cause the draft of a bill to prohibit the use of river water for the manufacture of ice.

Dr. Parrish announced that he would start an investigation today that will determine whether any river water is being used for ice.

Mr. Daniels declared yesterday that the piece of ice from which the analysis was made was manufactured from Bull Run water, but that it had been contaminated from an overhead pipe.

When man breathes he uses his muscular strength to draw in the air and it is afterward forced out automatically. With insects, as a German investigator has just discovered, this process is just reversed.

MAN SLAIN; PARTNER GONE Harvest Hand Oregon Bound Found Dead Under Wagon.

BILLINGS, Mont., Aug. 19.—The body of Karl Heiman, a harvest hand from North Dakota, was found under his wagon near Columbus, 40 miles west of here, this noon with the skull crushed.

MAN SLAIN; PARTNER GONE Harvest Hand Oregon Bound Found Dead Under Wagon.

BILLINGS, Mont., Aug. 19.—The body of Karl Heiman, a harvest hand from North Dakota, was found under his wagon near Columbus, 40 miles west of here, this noon with the skull crushed.

The Interstate Commerce Commission says: "The efficiency and excellence of the present service over both of these routes appears not to be questioned." "Rarely does a record before us present an array of witnesses whose testimony so uniformly indorses the character of the service as does this record."

The Bank of California National Association Capital paid in Gold Coin \$8,500,000.00 Surplus and Undivided Profits \$8,335,065.81 TRANSACT A GENERAL BANKING BUSINESS Issue Commercial Letters of Credit covering importation of merchandise, as well as Letters of Credit for use of travelers throughout the United States and Foreign Countries.

ICE CASE IS PUSHED Arrest of W. N. Daniels Predicted by Health Officer.

RIGID LAW IS PROPOSED Head of Company Found With Impure Product Declares It Was Contaminated by Accident and Was Not for Sale.

15 PASSED AT HILLSBORO Seven Ask Exemption From Draft on Vocational Grounds.

ALBANY OFFICERS ON LEAVE Albany, Or., Aug. 19.—(Special.)—Lieutenants Lee Bennett and Frank C. Steinhilber, commanding the recent training camp at San Francisco, arrived here yesterday on a brief furlough before reporting for active service.

PORTLAND METEOROLOGICAL REPORT PORTLAND, Aug. 19.—Maximum temperature, 85 degrees; minimum, 52. River readings, 6 feet; change in last 24 hours, -.01 foot.

THE WEATHER STATIONS. Blaker 52 86.0 6.00 NW Clear. Boston 52 84.0 10.00 SW Clear. Chicago 52 80.0 14.00 SE Clear.

MOVEMENTS OF VESSELS PORTLAND, Aug. 19.—Arrived—Steamers Ocean, from San Luis; Waltham, from Vancouver; Steamer P. A. Kilburn, for Coos Bay, Eureka and San Francisco.

MAN SLAIN; PARTNER GONE Harvest Hand Oregon Bound Found Dead Under Wagon.

ALASKA Ketchikan, Wrangell, Juneau, Douglas, Haines, Skagway, Cordova, Valdez, Seward and Anchorage. CALIFORNIA Via Seattle or San Francisco to Los Angeles and San Diego.

FRENCH LINE COMPAGNIE GENERALE TRANSATLANTIQUE NEW YORK-BORDEAUX-PARIS Direct Route to the Continent.