

HOW NORTHEASTERN OREGON HELPS TO PRODUCE THE STATE'S WEALTH



Alfalfa Harvesting on Irrigated Land. - O'Callen.

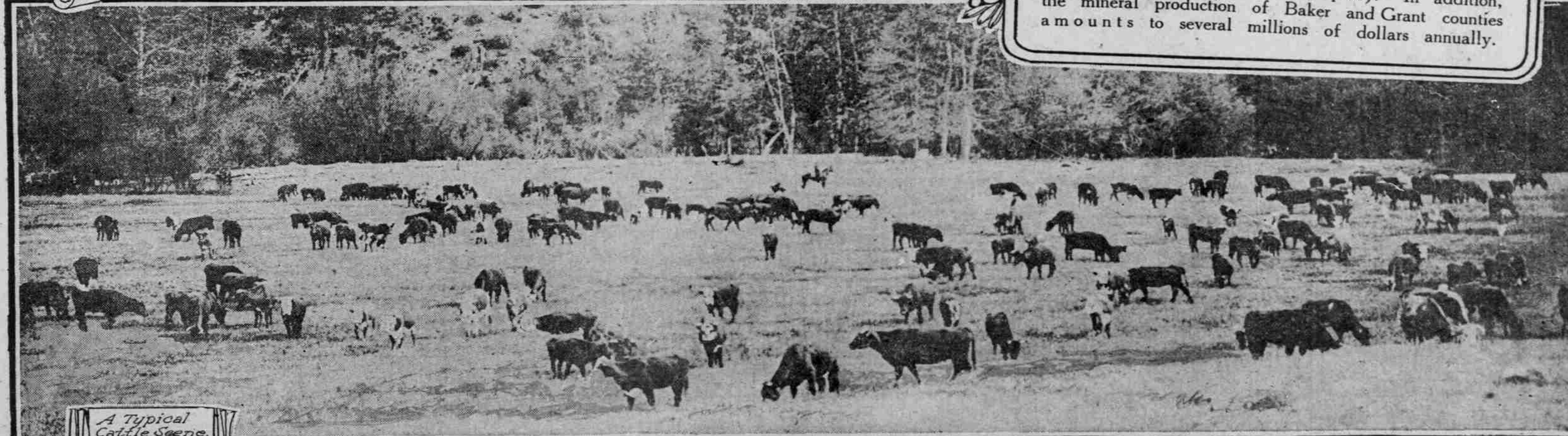


Harvesting on the Umatilla Indian Reservation. - Moorhouse.



Band of Eastern Oregon Sheep.

THIS district comprises the counties of Umatilla, Union, Wallowa, Wheeler, Baker and Grant. The chief products are wheat, barley, hay, livestock, fruit, wool and lumber (yellow pine). In addition, the mineral production of Baker and Grant counties amounts to several millions of dollars annually.



A Typical Cattle Scene.