

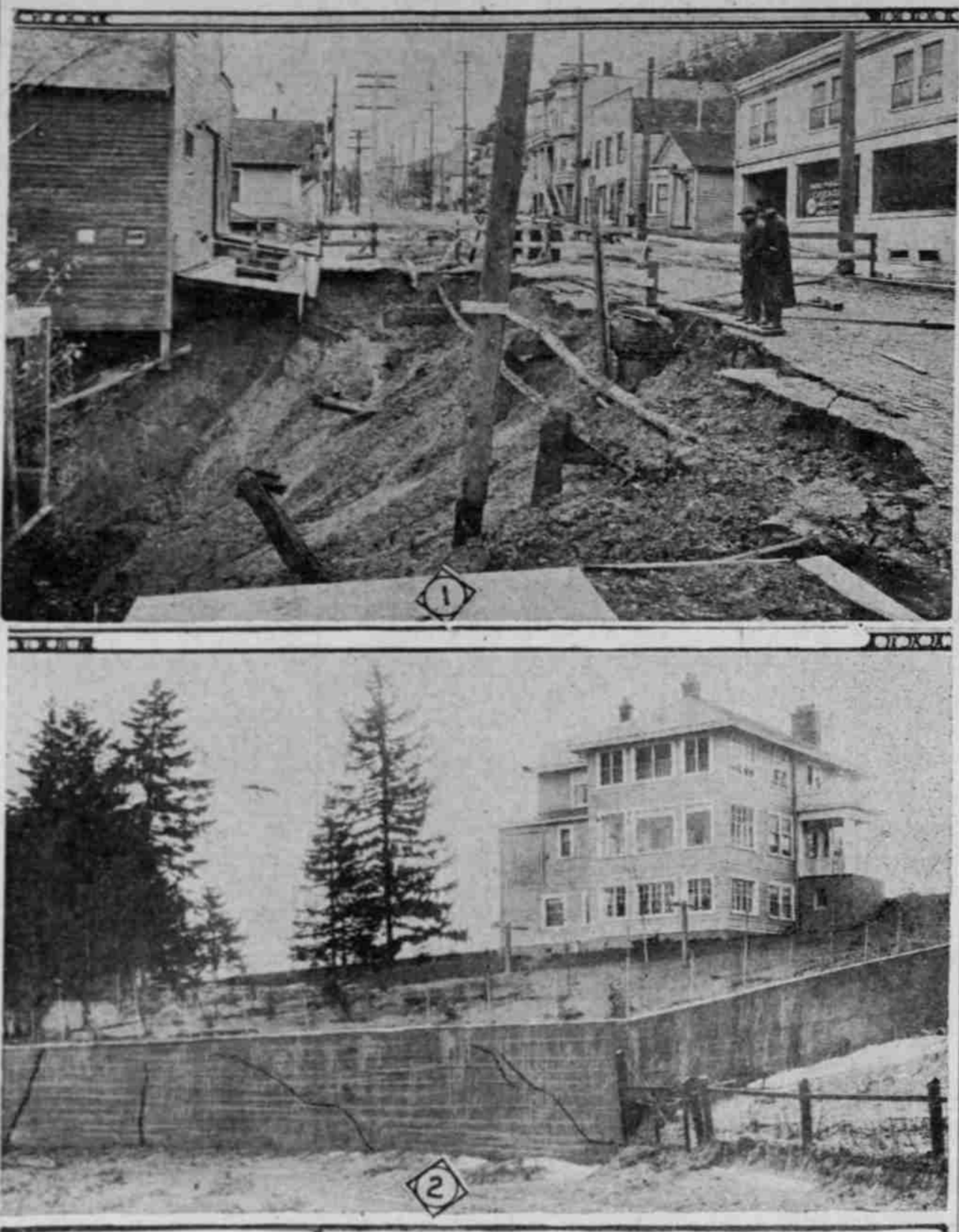
HOME PRAGMATICALLY WRECKED BY SLIDE

Several Houses Apparently Doomed and More Streets Badly Damaged.

WOMAN DEFIES MUD PERIL

Dwelling Left on Brink, Occupant Refuses to Seek Safety—Upper Washington Blocked—Grand Avenue Bridge Menaced.

VIEW OF ONE OF MANY STREETS CAVED IN BY SLIDES AND BEAUTIFUL RESIDENCE WHICH IS ON BRINK OF IMPENDING SLIDE.



More dirt slides yesterday added materially to the damage done since Monday. In the slides reported prior to yesterday more dirt went out, increasing the damage and danger of the slides occurred, endangering several more residences and streets.

The slides of yesterday undermined more of the houses on the completely blocked upper Washington street west of the entrance to Washington Park, practically wrecking a residence on South Sixteenth street, owned by A. G. Long and occupied by his mother, endangering houses near Fourteenth and Hall streets; took out part of the foundation of a house on the east side of the hill along the Pullman car line in South Portland and did more or less damage in some other parts of the city.



(2) Slide at First and Grove Streets, Which Has Taken Out Half of First Street. (3) View at Rear of Beautiful \$12,000 Home of W. C. Lawrence on Montgomery Drive, Which Has Moved More Than a Foot Out of Place by Movement of Ground Toward an Impending Slide. Behind the Camera is a Gully Several Hundred Feet Deep With Large Cracks Developing and Showing the Retaining Wall in Rear of Lawrence Home, Showing One of Many Slowly Widening Cracks. This Wall Has Moved Nine Inches Out of Place.

The beautiful \$12,000 home of W. C. Lawrence at 233 Montgomery drive still continued yesterday to settle along with a huge block of earth which seems to be moving toward an impending slide. The house moved out about four inches during the day. A retaining wall which was extended from the sidewalk to the house several days ago. Yesterday the house had moved until the pipe had to be cut and the house was now on the edge of collapse into the canyon.

South continues to increase the size of the slide at First and Grove streets, where a house and a blacksmith shop are in danger.

Yesterday considerable more of First street went out. The house of Miss McNeil still stands on the brink of the slide looking as though it might be swept away at any minute. Miss McNeil has refused to leave her home from the sidewalk to the house several days ago. Yesterday the house had moved until the pipe had to be cut and the house was now on the edge of collapse into the canyon.

On upper Washington street a big slide started from the north side, opposite Washington Park, and completely filled the street. Part of Penney street, in South Portland, went out at the intersection of Front and Penney.

PORT LARGES BASE

Astoria Naval Claims Get Portland Backing.

OTHER MATTERS COME UP

Separation of Oregon From California in New Supervising District Is Opposed—Harbor Extension Committee Named.

Fathered by Captain E. W. Spencer, who took the old railroad ferry Kalama on her final trip 22 years ago, a resolution was adopted by the Port of Portland Commission yesterday, urging Congress to consider seriously the selection of the Columbia River as a naval base.

Portlanders are against Oregon being separated from California, as it would mean the headquarters of this district would be at Seattle. It is argued that Portland has no direct connection with the coast, and in a navigation while it has at San Francisco through the fact its coastwise business is largely with that state.

The other important factor in the present negotiations is the cargo for the westbound movement. This cargo, according to the plans, is to be coal, and is to be handled from New Orleans to Portland, in freight cars.

RUSSIAN KEYSTONE BROKEN

The third army, standing on the ill-fated line of the Dunajec, was practically wiped out, and its disaster was responsible for the whole retreat.

The Russian keystone was broken and prisoners, with a loss to themselves of less than half that amount. The Germans, who rushed on with the idea that the road to Moscow lay open, ran into the rear guards, and at every contact the Russians, regardless of orders, broke loose and landed blows after blows on the Germans and Austrians.

The Russian keystone was broken and prisoners, with a loss to themselves of less than half that amount. The Germans, who rushed on with the idea that the road to Moscow lay open, ran into the rear guards, and at every contact the Russians, regardless of orders, broke loose and landed blows after blows on the Germans and Austrians.

The Russian keystone was broken and prisoners, with a loss to themselves of less than half that amount. The Germans, who rushed on with the idea that the road to Moscow lay open, ran into the rear guards, and at every contact the Russians, regardless of orders, broke loose and landed blows after blows on the Germans and Austrians.

The Russian keystone was broken and prisoners, with a loss to themselves of less than half that amount. The Germans, who rushed on with the idea that the road to Moscow lay open, ran into the rear guards, and at every contact the Russians, regardless of orders, broke loose and landed blows after blows on the Germans and Austrians.

SHOE PRICES JUMP

Dealer Tells of Scarcity in Leather Existing.

ALLIES ARE HEAVY BUYERS

WHI A. Knight Says Dealers Will Try to Make Up Lack of Quality by Giving Extra Smartness and Comfort.

LUMBERMEN PLAN LINE

SHIPS FROM PORTLAND TO NEW ORLEANS VIA CANAL PROPOSED. Project Is to Send Lumber South and Use Pennsylvania Coal as Return Voyage Cargo.

Some of the lumber manufacturers here in Portland and other shippers are negotiating with view to starting an independent steamship line between Portland and New Orleans, following the reopening of the Panama Canal.

C. Minsinger, president of the Star Steamship company, who is active in the negotiations, was here yesterday from New Orleans, where he conferred with lumber dealers who expect to be in the market soon for Douglas fir and other Northwest lumber.

All preliminary arrangements now in progress are based on the reopening of the Panama Canal and the availability of ocean-going vessels following the close of the war. No operations are contemplated before those two contingencies are met.

Mr. Minsinger reports that the southern lumber dealers will be in position to use large quantities of Northwest lumber for the southern market.

MARINE INTELLIGENCE.

Table with columns: Name, Date, and other details for various ships and arrivals.

DAILY CITY STATISTICS

Table with columns: Births, Deaths, and other statistics for the city.

RUSSIAN KEYSTONE BROKEN. The Russian keystone was broken and prisoners, with a loss to themselves of less than half that amount.

RUSSIAN KEYSTONE BROKEN. The Russian keystone was broken and prisoners, with a loss to themselves of less than half that amount.

RUSSIAN KEYSTONE BROKEN. The Russian keystone was broken and prisoners, with a loss to themselves of less than half that amount.

TAHOMA IN DANGER

Tug Thompson, Sent to Rescue, Fails in Mission.

IMPRISONED BOAT LISTING

Pike Poles at Edge of Ice Flee Show Thickness of 26 Feet—Georgia Burton, Sent Up Yesterday, Has Not Returned.

VANCOUVER, Wash., Feb. 10.—(Special.)—The river steamer Tahoma is in danger of being upset by the ice and is already listing badly, according to reports brought here today by the crew of the L. E. Thompson, a tug of Portland.

The Thompson attempted yesterday to get to the Tahoma, but did not get near it. The ice was so thick that it could be seen that the Tahoma had been pushed up at one side, and there was no chance of getting to her.

The Columbia River at Vancouver today stands at 12.4 feet and is rising. During the past 24 hours it rose 2.2 feet.

After battling with the ice at Cape Horn and being unable to reach the Tahoma, Mr. Thompson, the engineer, made his way to Vancouver, where the boat landed at Hayden Island and the sick man was taken to Portland on a stretcher.

The People's Navigation Company, of Portland, which owns the Tahoma, sent the Georgia Burton, of Portland, to rescue the ice-locked boat. She took a cargo of oil to Cape Horn at 4 A. M. today. She was to get to the Tahoma if possible and tow her to Portland.

Owners of the Tahoma fear that she will be taking water now and that she will be compelled to use the oil she has on board to operate the pumps, in which case, she will be unable to be supplied or towed to Portland.

WATER SYSTEM ACTION DUE

Portland Plan to Begin Work in St. Johns District Monday.

The St. Johns Water Company must show some speed if it wants to head off the city from starting the construction of a duplicate water system in the St. Johns district to compete with the present privately owned plant.

HERMIT DECLARED INSANE

Man Who Fed Sawdust to Horse to Be Sent to Salem.

Edward Weber, a hermit living in poverty and squalor in a small shack east of Portland, was yesterday pronounced insane. He will be sent to Salem today. Weber was taken into custody Wednesday by Deputy Sheriff Christensen and Officer L. G. Brown.

TAHOMA IN DANGER

Tug Thompson, Sent to Rescue, Fails in Mission.

IMPRISONED BOAT LISTING

Pike Poles at Edge of Ice Flee Show Thickness of 26 Feet—Georgia Burton, Sent Up Yesterday, Has Not Returned.

VANCOUVER, Wash., Feb. 10.—(Special.)—The river steamer Tahoma is in danger of being upset by the ice and is already listing badly, according to reports brought here today by the crew of the L. E. Thompson, a tug of Portland.

The Thompson attempted yesterday to get to the Tahoma, but did not get near it. The ice was so thick that it could be seen that the Tahoma had been pushed up at one side, and there was no chance of getting to her.

The Columbia River at Vancouver today stands at 12.4 feet and is rising. During the past 24 hours it rose 2.2 feet.

After battling with the ice at Cape Horn and being unable to reach the Tahoma, Mr. Thompson, the engineer, made his way to Vancouver, where the boat landed at Hayden Island and the sick man was taken to Portland on a stretcher.

The People's Navigation Company, of Portland, which owns the Tahoma, sent the Georgia Burton, of Portland, to rescue the ice-locked boat. She took a cargo of oil to Cape Horn at 4 A. M. today. She was to get to the Tahoma if possible and tow her to Portland.

Owners of the Tahoma fear that she will be taking water now and that she will be compelled to use the oil she has on board to operate the pumps, in which case, she will be unable to be supplied or towed to Portland.

WATER SYSTEM ACTION DUE

Portland Plan to Begin Work in St. Johns District Monday.

The St. Johns Water Company must show some speed if it wants to head off the city from starting the construction of a duplicate water system in the St. Johns district to compete with the present privately owned plant.

HERMIT DECLARED INSANE

Man Who Fed Sawdust to Horse to Be Sent to Salem.

Edward Weber, a hermit living in poverty and squalor in a small shack east of Portland, was yesterday pronounced insane. He will be sent to Salem today. Weber was taken into custody Wednesday by Deputy Sheriff Christensen and Officer L. G. Brown.

TAHOMA IN DANGER

Tug Thompson, Sent to Rescue, Fails in Mission.

IMPRISONED BOAT LISTING

Pike Poles at Edge of Ice Flee Show Thickness of 26 Feet—Georgia Burton, Sent Up Yesterday, Has Not Returned.

VANCOUVER, Wash., Feb. 10.—(Special.)—The river steamer Tahoma is in danger of being upset by the ice and is already listing badly, according to reports brought here today by the crew of the L. E. Thompson, a tug of Portland.

The Thompson attempted yesterday to get to the Tahoma, but did not get near it. The ice was so thick that it could be seen that the Tahoma had been pushed up at one side, and there was no chance of getting to her.

The Columbia River at Vancouver today stands at 12.4 feet and is rising. During the past 24 hours it rose 2.2 feet.

After battling with the ice at Cape Horn and being unable to reach the Tahoma, Mr. Thompson, the engineer, made his way to Vancouver, where the boat landed at Hayden Island and the sick man was taken to Portland on a stretcher.

The People's Navigation Company, of Portland, which owns the Tahoma, sent the Georgia Burton, of Portland, to rescue the ice-locked boat. She took a cargo of oil to Cape Horn at 4 A. M. today. She was to get to the Tahoma if possible and tow her to Portland.

Owners of the Tahoma fear that she will be taking water now and that she will be compelled to use the oil she has on board to operate the pumps, in which case, she will be unable to be supplied or towed to Portland.

WATER SYSTEM ACTION DUE

Portland Plan to Begin Work in St. Johns District Monday.

The St. Johns Water Company must show some speed if it wants to head off the city from starting the construction of a duplicate water system in the St. Johns district to compete with the present privately owned plant.

HERMIT DECLARED INSANE

Man Who Fed Sawdust to Horse to Be Sent to Salem.

Edward Weber, a hermit living in poverty and squalor in a small shack east of Portland, was yesterday pronounced insane. He will be sent to Salem today. Weber was taken into custody Wednesday by Deputy Sheriff Christensen and Officer L. G. Brown.

TAHOMA IN DANGER

Tug Thompson, Sent to Rescue, Fails in Mission.

IMPRISONED BOAT LISTING

Pike Poles at Edge of Ice Flee Show Thickness of 26 Feet—Georgia Burton, Sent Up Yesterday, Has Not Returned.

VANCOUVER, Wash., Feb. 10.—(Special.)—The river steamer Tahoma is in danger of being upset by the ice and is already listing badly, according to reports brought here today by the crew of the L. E. Thompson, a tug of Portland.

The Thompson attempted yesterday to get to the Tahoma, but did not get near it. The ice was so thick that it could be seen that the Tahoma had been pushed up at one side, and there was no chance of getting to her.

The Columbia River at Vancouver today stands at 12.4 feet and is rising. During the past 24 hours it rose 2.2 feet.

After battling with the ice at Cape Horn and being unable to reach the Tahoma, Mr. Thompson, the engineer, made his way to Vancouver, where the boat landed at Hayden Island and the sick man was taken to Portland on a stretcher.

The People's Navigation Company, of Portland, which owns the Tahoma, sent the Georgia Burton, of Portland, to rescue the ice-locked boat. She took a cargo of oil to Cape Horn at 4 A. M. today. She was to get to the Tahoma if possible and tow her to Portland.

Owners of the Tahoma fear that she will be taking water now and that she will be compelled to use the oil she has on board to operate the pumps, in which case, she will be unable to be supplied or towed to Portland.

WATER SYSTEM ACTION DUE

Portland Plan to Begin Work in St. Johns District Monday.

The St. Johns Water Company must show some speed if it wants to head off the city from starting the construction of a duplicate water system in the St. Johns district to compete with the present privately owned plant.

HERMIT DECLARED INSANE

Man Who Fed Sawdust to Horse to Be Sent to Salem.

Edward Weber, a hermit living in poverty and squalor in a small shack east of Portland, was yesterday pronounced insane. He will be sent to Salem today. Weber was taken into custody Wednesday by Deputy Sheriff Christensen and Officer L. G. Brown.

TAHOMA IN DANGER

Tug Thompson, Sent to Rescue, Fails in Mission.

IMPRISONED BOAT LISTING

Pike Poles at Edge of Ice Flee Show Thickness of 26 Feet—Georgia Burton, Sent Up Yesterday, Has Not Returned.

VANCOUVER, Wash., Feb. 10.—(Special.)—The river steamer Tahoma is in danger of being upset by the ice and is already listing badly, according to reports brought here today by the crew of the L. E. Thompson, a tug of Portland.

The Thompson attempted yesterday to get to the Tahoma, but did not get near it. The ice was so thick that it could be seen that the Tahoma had been pushed up at one side, and there was no chance of getting to her.

The Columbia River at Vancouver today stands at 12.4 feet and is rising. During the past 24 hours it rose 2.2 feet.

After battling with the ice at Cape Horn and being unable to reach the Tahoma, Mr. Thompson, the engineer, made his way to Vancouver, where the boat landed at Hayden Island and the sick man was taken to Portland on a stretcher.

The People's Navigation Company, of Portland, which owns the Tahoma, sent the Georgia Burton, of Portland, to rescue the ice-locked boat. She took a cargo of oil to Cape Horn at 4 A. M. today. She was to get to the Tahoma if possible and tow her to Portland.

Owners of the Tahoma fear that she will be taking water now and that she will be compelled to use the oil she has on board to operate the pumps, in which case, she will be unable to be supplied or towed to Portland.

WATER SYSTEM ACTION DUE

Portland Plan to Begin Work in St. Johns District Monday.

The St. Johns Water Company must show some speed if it wants to head off the city from starting the construction of a duplicate water system in the St. Johns district to compete with the present privately owned plant.

HERMIT DECLARED INSANE

Man Who Fed Sawdust to Horse to Be Sent to Salem.

Edward Weber, a hermit living in poverty and squalor in a small shack east of Portland, was yesterday pronounced insane. He will be sent to Salem today. Weber was taken into custody Wednesday by Deputy Sheriff Christensen and Officer L. G. Brown.