

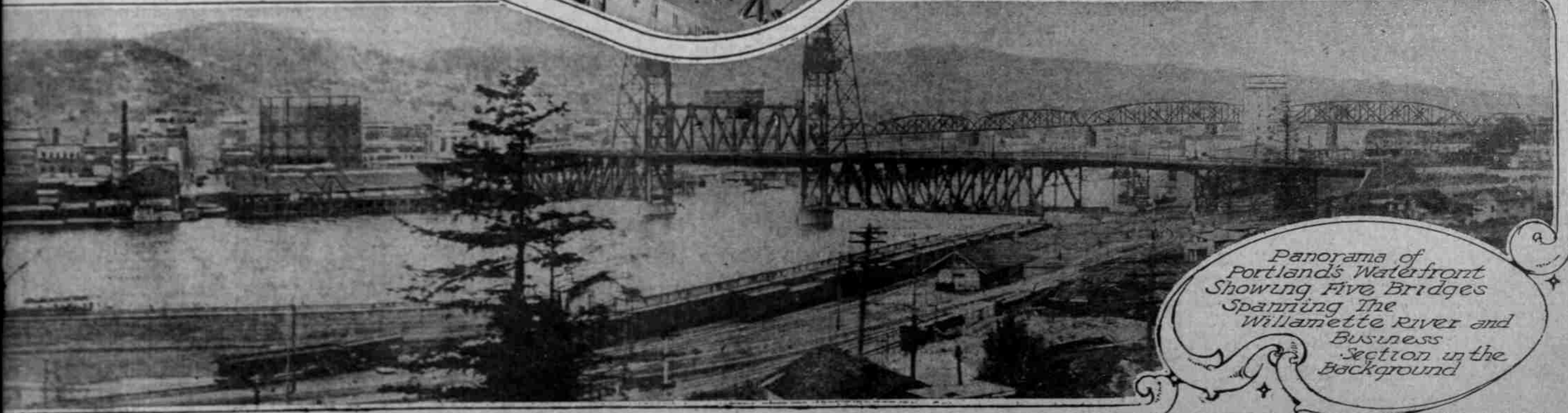
SHIP CHANNEL FROM PORTLAND TO ASTORIA
(ZERO STAGE)

	1885	1915
① SWAN ISLAND	14.5 Ft	30. Ft
② POST OFFICE BAR	16.5 "	30. "
③ MOUTH OF WILLAMETTE	18. "	33. "
④ MORGAN'S	18. "	33. "
⑤ REEDER'S	12. "	33. "
⑥ HENRICI'S	16 "	30. "
⑦ ST. HELENS	12.5 "	31. "
⑧ MARTIN'S ISLAND	14. "	30 "
⑨ HUNTER'S	16 "	30. "
⑩ DOBELBOWER'S	14. "	32. "
⑪ WALKER'S ISLAND	16 "	30. "
⑫ EUREKA	17. "	30. "
⑬ COFFEE ISLAND	16. "	30. "
⑭ PILLAR ROCK	14. "	30. "
⑮ TONGUE PT. CROSSING	15. "	30. "
AVERAGE	15.3 "	30.8 "

COLUMBIA and WILLAMETTE RIVERS from PORTLAND to the SEA

Depth of Channel Between Portland and Mouth of Columbia in 1885 was 13 feet and now is 31 feet.

Loading Wheat For California Market
photo by Crego.



Panorama of Portland's Waterfront Showing Five Bridges Spanning The Willamette River and Business Section in the Background