

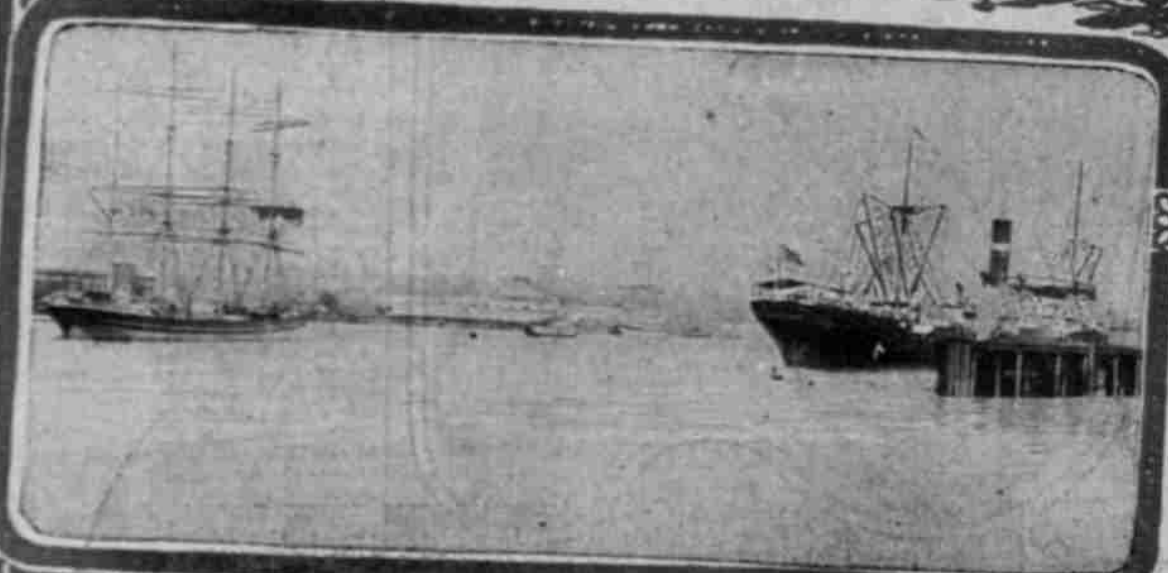
PORTLAND ONE OF CHIEF SHIPPING CENTERS



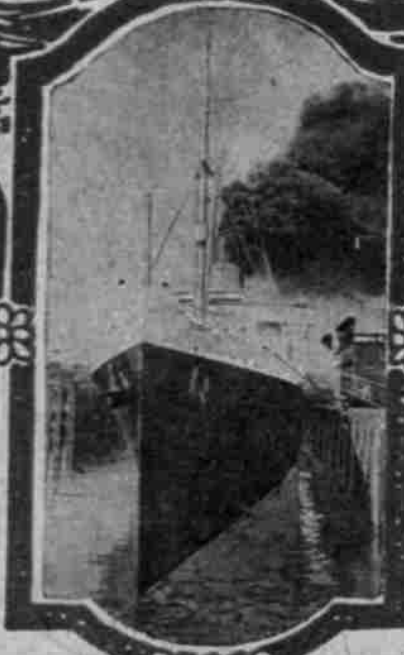
Foreign Vessel at Grain Docks



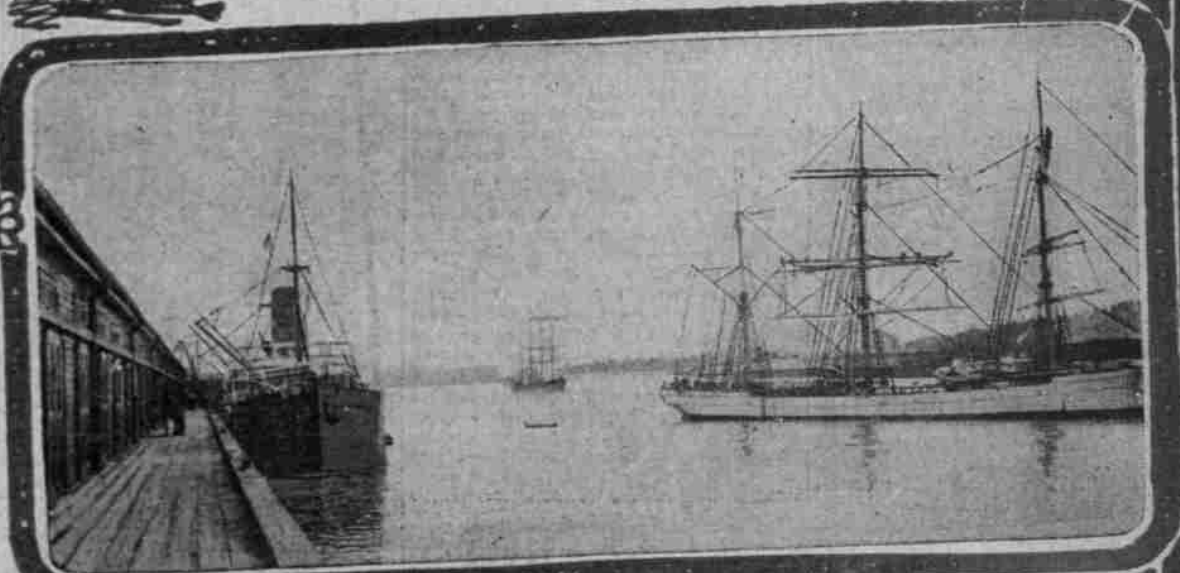
French Bark Loading With Wheat



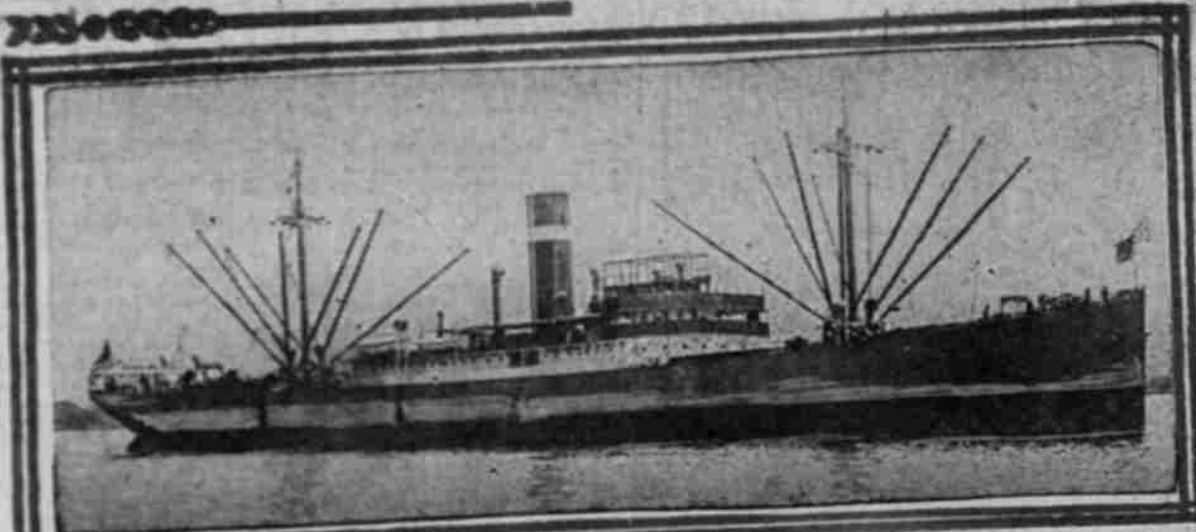
A Glimpse of Portland Harbor



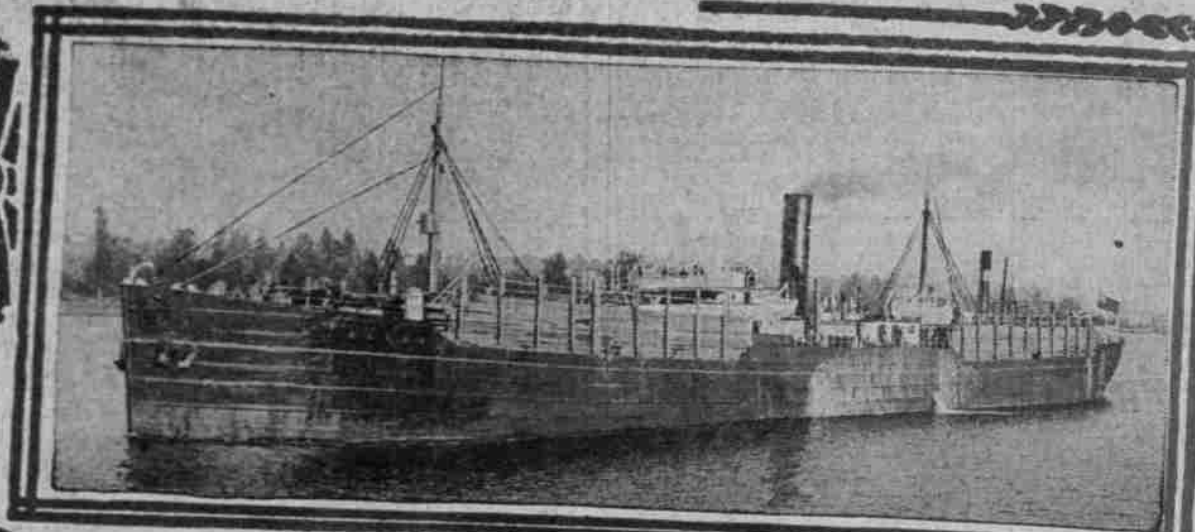
S.S. Northern Pacific in Portland Harbor



Advance Guard of the Grain Fleet



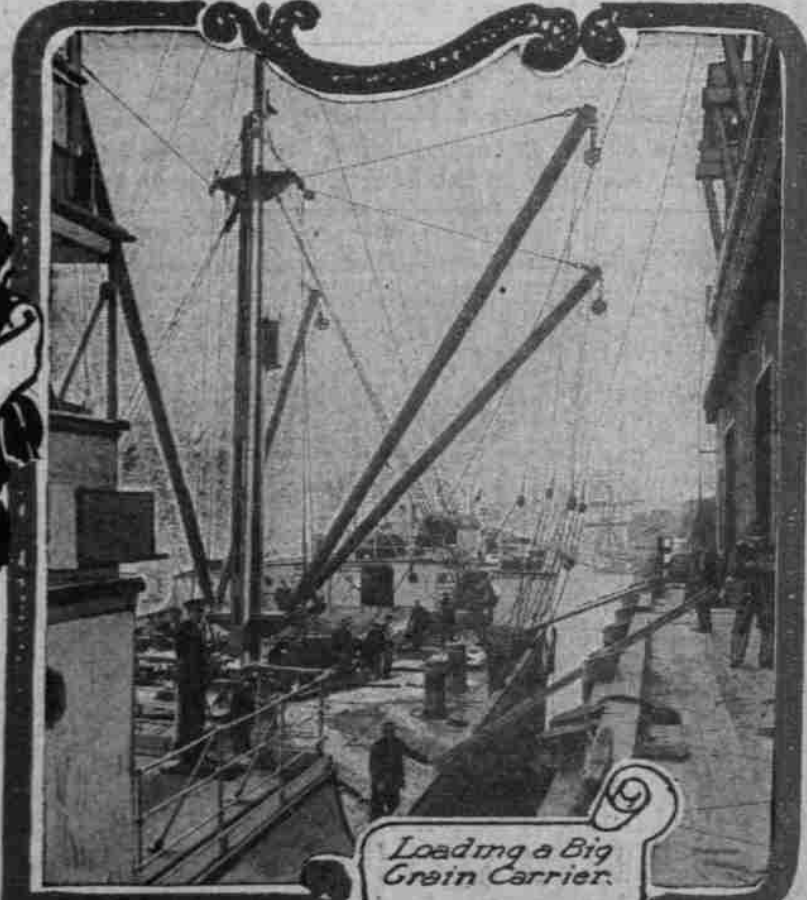
Big Steamer in Interoceanic Trade



Vessel Loaded With Lumber for South America



View of Section of Railroad Terminal Yards Docks in Rear



Loading a Big Grain Carrier