

ALASKANS EAGER TO TRADE IN PORTLAND

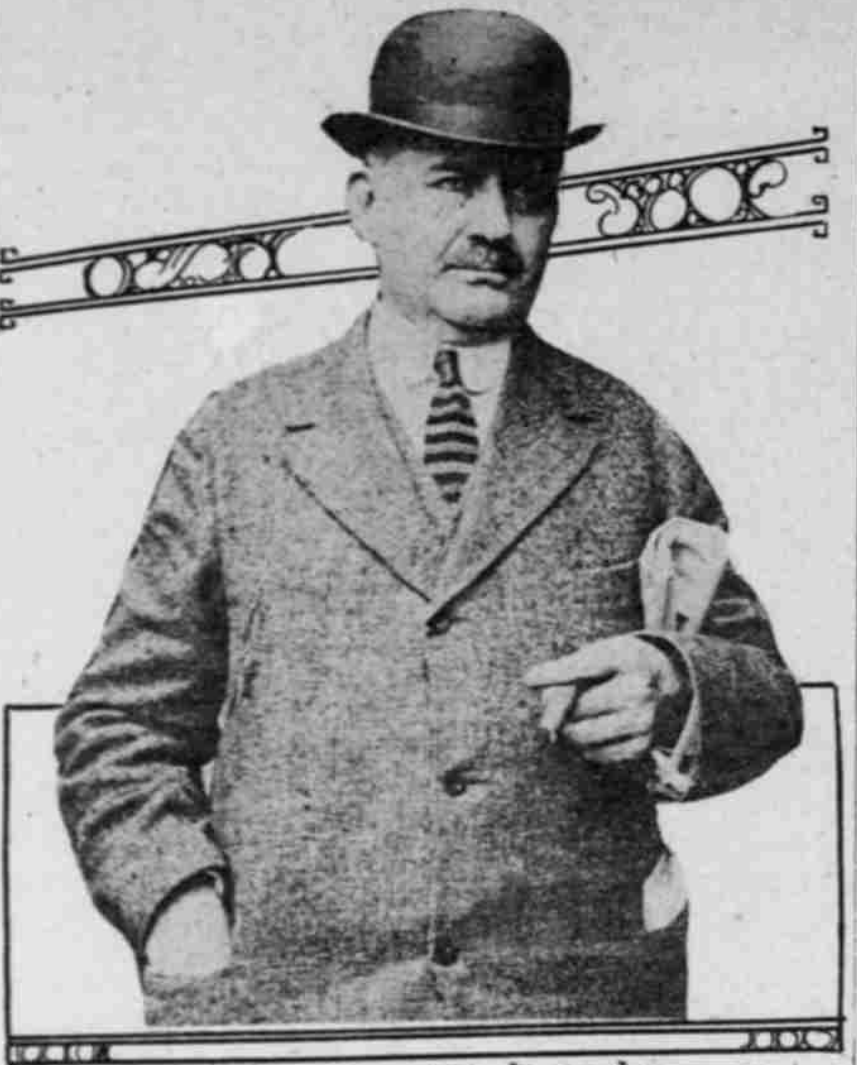
Delegate Wickersham Says Business Is to Be Had by Going After It.

SEATTLE NOT PREFERRED

Chance to Put in Steamship Line With Return Cargo of Coal Is Pointed Out—Railroad Will Open Up Great Territory.

"Why don't you Portland people wake up and go after our Alaskan trade?" The newspaper man had gone to the Portland Hotel to see James Wickersham, the Alaskan delegate to Congress, about the new railroad up in Alaska, conservation, prospective statehood and various other problems that keep the Northern peninsula more or less constantly before the public eye.

ALASKAN DELEGATE TO CONGRESS, WHO URGES PORTLAND MAINTAIN STEAMSHIP LINE TO ALASKA.



James Wickersham

GAINS ARE SHOWN

Postal Receipts Increase Over November, 1914.

HOG BUSINESS IS RECORD

Bank Clearings Lower Than Last Year and Exports, Too, but Latter Discrepancy Is Blamed to Inability to Get Vessels.

ROBBER SUSPECT PUNISHED

One Accused of Holding Up Jitney Driver Gets Six Months.

TRACT RECEIVER IS NAMED

Thomas Randall Is to Handle Company of \$88,000 Debts.

J. O. Wing Estate Left to Widow.

Vancouver, Wash., Nov. 29.—(Special.)—The will of J. O. Wing, late of Washington, leaves the bulk of his estate valued at \$18,000 to his widow.

PORTLAND'S CEREAL EXPORTS FOR FIVE MONTHS OF 1915-16 SEASON.

Table with columns for Month, Wheat, Barley, Flour, and Value. Rows for July, August, September, October, and November.

EXPORT SPORT DUE

Second Month of Canal Blockade Passes Expectations.

TONNAGE DROP EXPLAINED

Conditions Year Ago Considered More Favorable, When 500,000 Bushels More Were Shipped.

Most Is Sent to Europe.

Closing the second month yesterday, in which the blockade of the Panama Canal had a strong influence, Portland did not make such a slump in cereal exports as many predicted. The total shipments for the month were 92,723 bushels, according to tabulations of the Merchants' Exchange, added to which were 230,000 bushels of barley.

ROBBER SUSPECT PUNISHED

One Accused of Holding Up Jitney Driver Gets Six Months.

MORE LUMBER TONNAGE DUE

November Shipments More Than Half That Sent Year Ago.

WINTER SCHEDULE IS FIXED

Alaska Steamship Company to Have Three Vessels Operating.

TRANSPORTATION MEN ACT

Club Talent Shows Merit at Smoker Largely Attended.

FEW FEOKS HARE GRAY HAIR NOW

Druggist Says Ladies Are Using Recipe of Sage Tea and Sulphur.

MILLIONS USE IT TO STOP A COLD

"Pape's Cold Compound" Ends Severe Colds or Grippe in Few Hours.

ALASKANS EAGER TO TRADE IN PORTLAND

Delegate Wickersham Says Business Is to Be Had by Going After It.

SEATTLE NOT PREFERRED

Chance to Put in Steamship Line With Return Cargo of Coal Is Pointed Out—Railroad Will Open Up Great Territory.

GAINS ARE SHOWN

Postal Receipts Increase Over November, 1914.

HOG BUSINESS IS RECORD

Bank Clearings Lower Than Last Year and Exports, Too, but Latter Discrepancy Is Blamed to Inability to Get Vessels.

ROBBER SUSPECT PUNISHED

One Accused of Holding Up Jitney Driver Gets Six Months.

MORE LUMBER TONNAGE DUE

November Shipments More Than Half That Sent Year Ago.

WINTER SCHEDULE IS FIXED

Alaska Steamship Company to Have Three Vessels Operating.

TRANSPORTATION MEN ACT

Club Talent Shows Merit at Smoker Largely Attended.

FEW FEOKS HARE GRAY HAIR NOW

Druggist Says Ladies Are Using Recipe of Sage Tea and Sulphur.

MILLIONS USE IT TO STOP A COLD

"Pape's Cold Compound" Ends Severe Colds or Grippe in Few Hours.

ALASKANS EAGER TO TRADE IN PORTLAND

Delegate Wickersham Says Business Is to Be Had by Going After It.

SEATTLE NOT PREFERRED

Chance to Put in Steamship Line With Return Cargo of Coal Is Pointed Out—Railroad Will Open Up Great Territory.

GAINS ARE SHOWN

Postal Receipts Increase Over November, 1914.

HOG BUSINESS IS RECORD

Bank Clearings Lower Than Last Year and Exports, Too, but Latter Discrepancy Is Blamed to Inability to Get Vessels.

ROBBER SUSPECT PUNISHED

One Accused of Holding Up Jitney Driver Gets Six Months.

MORE LUMBER TONNAGE DUE

November Shipments More Than Half That Sent Year Ago.

WINTER SCHEDULE IS FIXED

Alaska Steamship Company to Have Three Vessels Operating.

TRANSPORTATION MEN ACT

Club Talent Shows Merit at Smoker Largely Attended.

FEW FEOKS HARE GRAY HAIR NOW

Druggist Says Ladies Are Using Recipe of Sage Tea and Sulphur.

MILLIONS USE IT TO STOP A COLD

"Pape's Cold Compound" Ends Severe Colds or Grippe in Few Hours.

FAMOUS CALIFORNIA HOTELS HEALTH & WINTER RESORTS

Spent the Winter in California

AVERAGE TEMPERATURES OF LEADING CALIFORNIA RESORTS For Week Ending Saturday, Nov. 20, 1915.

TEMPERATURES CHANGED WEEKLY

HOTEL DEL MONTE The Golder's Paradise—California's resort beautiful. More to do and more to see at Del Monte than any other winter resort in the world.

Hotel Virginia LONG BEACH, CALIFORNIA. RICH WITH SOCIAL LIFE. The Virginia is the center of winter social activities.

Arrowhead Hot Springs FAMOUS FOR THE WONDERFUL 3,000 FT. ALTITUDE NATURAL STEAM BATHS—THE ONLY ONES IN THE WORLD.

HOTEL TURPIN "IN THE HEART OF THE CITY" 17 POWELL ST. AT MARKET. EVERY CONVENIENCE AND COMFORT.

Hotel Tankershim LOS ANGELES. Broadway at Seventh. The center of shopping, business and pleasure.

WENTON The greater result of the Pacific Coast. By the sea, in the heart of the city.

FEW FEOKS HARE GRAY HAIR NOW Druggist Says Ladies Are Using Recipe of Sage Tea and Sulphur.

MILLIONS USE IT TO STOP A COLD "Pape's Cold Compound" Ends Severe Colds or Grippe in Few Hours.