

SOUTH BEND GROWS AS INDUSTRY CENTER

"Hard Times" Is Expression Unknown in Beautiful, Flourishing Town.

COUNTY RESOURCES ABOUND

Fisheries During Year Bring in Revenue Averaging \$50 Per Capita for Entire Population—Club Is Marvel.

BY ADDISON BENNETT. SOUTH BEND, Sept. 26.—(Special.)—Do not mention "hard times" in this little city. They would not know what the term means. Now, do not think that the lumber slump has made no inroads into the general business situation, for it has.

In the days of the rule of McKinley, Roosevelt and Taft there were 12 saw mills and the same number of shingle mills running in Pacific County, of which this city is now the center. Now, when many of these have been idle and many of the remainder have been running on short time, while only a few have been making any money.

But this is a county of wonderful resources, remarkably wonderful, if you will excuse the double adjective. Of course the 12 billion feet of standing timber—all, or practically all, easy of access, is an asset great enough to

found a state instead of a county—over shadows all others—but (and an important but) the day will come long before the great forests are denuded of this timber when the coast in Oregon and Washington the dairy cow finds her heaven—and it may almost beyond dispute be said that the real seventh heaven is in Pacific County.

Fish Industry Returns High. First, let us look at the so-called fisheries industries, that is, the food taken from the waters of the bays, rivers and the adjacent depths of the ocean. Last year there were shipped from here 30,000 cases of clams, valued at \$150,000; 12,000 cases of crabs, valued at \$72,000; oysters to the value of \$400,000 and 100,000 cases of fish to the value of \$125,000. There are also \$747,000 taken from the waters of the county and the adjacent ocean depths—and as the last census shows the county a population of 12,532 people—and that is perhaps within a couple of thousand of the actual number—it will be seen at the latter number that the fisheries alone brought in close to \$50 per capita for the entire population!

Practically all of this output goes to the cities on Puget Sound, the City of Portland and the City of San Francisco. As the industries are developed the entire Western section of the United States will be eating crabs and oysters from this section. As to oysters, there are no others in the West to equal the Toke Points, which come from the bays of Pacific County.

When the Portland Chamber of Commerce begins a mill and a quarter of a dollar for the erection of a building and equipping it, then, and not until then, will our much-vaunted civic organization equal that of the city of South Bend Commercial Club. The people here, at an expense of about \$5 per capita for the year, have equipped a clubhouse, that is, simply a marvel. It costs about 60 cents per capita to keep it running through the year, and the expenditure of \$150,000 for the Chamber of Commerce. No club that I ever know of performs the functions of a civic organization equal to that of the South Bend Commercial Club.

The splendid building, the civic center of the city, for both women and men. The rooms (the building is about 80 feet square, with deep porches, and open to the sky) is kept in the best of order all the time. A secretary is employed by the year and he is on the job almost day and night. Now, when you hear about this or that organization being "the best in the country," please read this proviso: "Except the South Bend Commercial Club."

F. R. Nettleton Is President. Another thing—the club does not owe a cent and pays cash as goes. It has nearly 200 members; if our Chamber of Commerce had the same proportion it would have about 12,000—and it lacks that a "nettle" bit. The president of this splendid organization is F. R. Nettleton and the secretary is Elmer Brown—and I take off my hat to both of them.

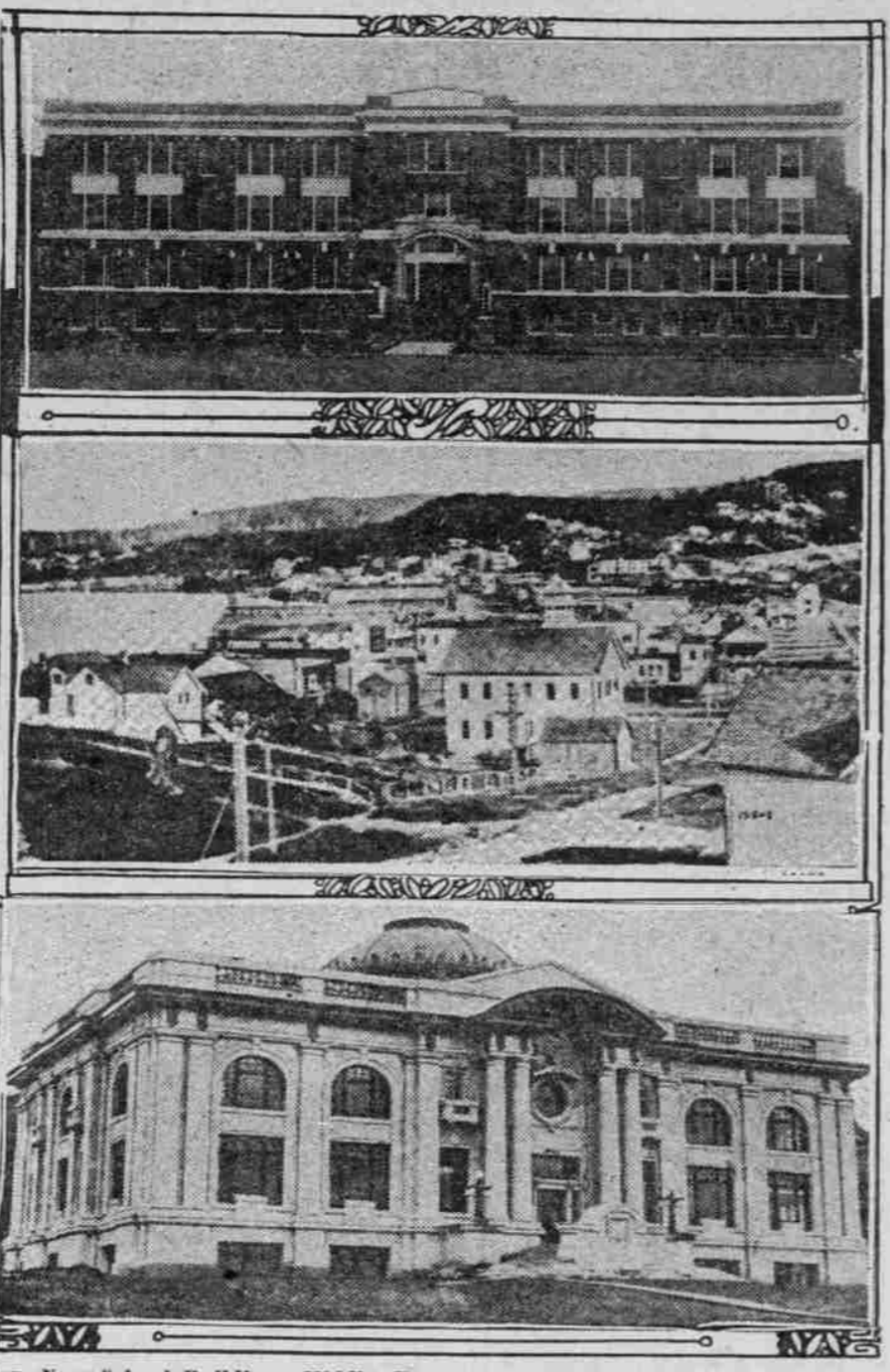
Then there is a hotel here that is a model for comfort and good "cats," the Hotel Albee, on relation I believe to our Mayor, George J. Helm, proprietor—but don't forget Mrs. George J. Helm and her smile that never comes off. The Helms sure know how to run a hotel—and they have a chef who cooks oysters as they should be cooked! It is worth a trip from Portland here just to stop a few days at the Hotel Albee. And South Bend is not so far from Portland. About as far as Arlington. Anyhow, it is so close that about everybody here takes the Oregonian—some of them have taken it for nearly 40 years.

There is only one bank here, the Pacific State. Joseph G. Helm is president, L. W. Homan, cashier. It has a capital of \$100,000, surplus of \$35,000 and profits of \$26,483. Its deposits are \$464,569.58.

Area of Pacific 805 Square Miles. Pacific County is the extreme southwestern county of Washington, running from the Columbia river on the south to Grays Harbor County on the north. It has 805 square miles, a little larger than Clatsop County, Oregon. Towards the northwestern part of the county the Willapa River flows into what is called Willapa Bay or harbor, the river forming the bay about 15 miles from the ocean. Then there are other bays, one called Shoalwater Bay, running down almost to the mouth of the Columbia. Between this bay and the ocean lies the wonderful beach, nearly 20 miles long, spoken of as a whole as Long Beach. Running about half way up this beach to Nahcotta passing Dwaco, Seaview, Breakers and Ocean Park is a little road, owned by the O. W. R. & N. Company, that terminates at Megler, opposite Astoria.

I wish somebody (anybody) would drop a postcard to Uncle Sam and tell about this Willapa Harbor. He does not know it! At least he has never spent a penny hereabouts to assist the navigators. Not that the opening into the ocean needs any of his help. It is one of the few natural harbors of the country, with some 30 feet at mean tide. But the bay inside and the river as it jets into the bay need some dredging, now carrying only about 25 feet of

TYPICAL SCENES IN SOUTH BEND, WASH.



Top, New School Building—Middle, View of City Looking East—Below, Pacific County Courthouse.

MANY CLERGY HEARD Variety of Services Conducted at Roseburg.

ROSEBURG, Or., Sept. 26.—(Special.)—Diversing from the regular conference duties which marked the sessions of the past four days the delegates in attendance at the annual conference of the Methodist Episcopal Church here

attended a series of services which began at 8 o'clock this morning and continued until late tonight. The so-called "before breakfast" service was held in the Methodist Episcopal Church at 5 o'clock this morning. Rev. T. B. Ford, of Oregon City, presided. At the regular Sunday school session Rev. M. B. Faroungian, Sunday school missionary of the Oregon Conference, spoke on the subject, "The Sunday School of Today the Churches Greatest Opportunity." The conference Bible class was taught by Rev. J. H. Talbot, president of the Kimball College of Theology.

Bishop Cook preached the morning sermon, which was followed by several musical numbers by local talent. This afternoon the ordination service was held, followed by a meeting of the Epworth League under the direction of Rev. Frank James. Among those who addressed the congregation at the evening services were Rev. J. W. McDougall, Rev. F. D. Boyd and Bishop Cooke. A solo by Mrs. Claude Smith was one of the feature numbers of this service.

As several committees are yet to report to the conference it was generally agreed here tonight that the conference will not reach an adjournment before late tomorrow. It was intended to adjourn before noon. Bishop Cooke will leave Roseburg tomorrow night for Los Angeles where he will attend a meeting of bishops to be held later in the week. Although it is predicted that few of the pastors of the leading churches of the conference will be changed by the bishop, there is much speculation here today as to appointments to the smaller charges. Since coming to Roseburg the bishop has received many memorials asking that the pastors of certain churches be retained for another year. That he is considering these memorials was the statement of his confidential friends.

HOSPITAL STONE IS LAID BISHOP SCHINNER, OF SPOKANE, OFFICIATES AT WALLA WALLA. War in Europe Characterized As Return of Paganism Resulting From Worship of Power. WALLA WALLA, Wash., Sept. 26.—(Special.)—The cornerstone of the new St. Mary's Hospital was laid tonight by Bishop A. F. Schinner, of Spokane, officiating. The hospital is to cost \$250,000.

Bishop Schinner spoke of the church and charity, saying the two had been associated from the beginning. The war in Europe was characterized as a return to paganism as a result of the worship of money and power and not a failure of Christianity. He said the only ray of hope for its settlement emanated from the prince of peace, the Holy Father. The hospital will replace the one burned in January and will be completed by next summer. Speakers included Mayor Toner, President Weyrauch, of the Commercial Club; Marvin Evans and Dr. W. M. Ely. Dr. C. N. Suttner was chairman. The weather was inclement, making the attendance small.

Pe Ell Sawmill Planned. CENTRALIA, Wash., Sept. 26.—(Special.)—George W. Onn, of Tacoma, is planning to erect a sawmill on Jones Creek, a few miles north of Pe Ell. Mr. Onn has secured options on several tracts of timber in that vicinity, which he is having cruised to ascertain whether or not there is sufficient timber to justify the expenditure. The new mill, if erected, will have a daily capacity of from 40,000 to 50,000 feet.

SALEM STATE FAIR WILL OPEN TODAY

Programme Begins With Special Children's Exercises in Auditorium.

AMUSEMENTS ARE FEATURE

Racing Events Planned as Big Attraction; Track Is in Splendid Condition; Aviator Scheduled to Make Flights.

TODAY'S FAIR PROGRAMME, CHILDREN'S DAY. Morning—10:30 o'clock. Special musical and literary programme in the new auditorium by school children. Music by Hebel's Cherrybud band, of Salem. Aeroplane flight by Herbert E. Munter, of Seattle. Afternoon—1:30 o'clock. Racing programme, music by the E. E. roy band, Portland; vocal selections in grandstand by Ladies' Double Quintette, Male Quartette and Orpheus Chorus. Aeroplane flight. Evening—7:30 o'clock. Addresses by State Fair officials and entertainers. Band and vocal music in new auditorium.

STATE FAIR GROUNDS, Salem, Or., Sept. 26.—(Special.)—Oregon's 54th annual State Fair will open tomorrow for a week's run, and tonight, despite the rain which has fallen intermittently throughout the day, the stage is almost set for the thousands of visitors who will be here to see the varied exhibits of Oregon products, and enjoy the racing programme. Oregon's famous "mist," that almost annual precursor of past State Fairs, will not spell the grief to all concerned this year as before, for with newly paved roadways throughout most of the grounds, the mud is virtually eliminated. Only on the racetrack is the rain's effect feared.

Opening Day Is Children's. Children of Oregon will have their innings tomorrow. They will give a special musical and literary programme in the new auditorium at 10:30 A. M. In the afternoon, besides the racing events, McElroy's Band of 275 animals of the Shropshire, Dorset Horn, Hampshire, Southdown, Oxford Down, Cotswold and Lincoln breeds. The county exhibits installed in the new pavilions are designed to impress the visitor with the wide range of the state's resources. Seventeen counties will have exhibits and tonight most of them were in place.

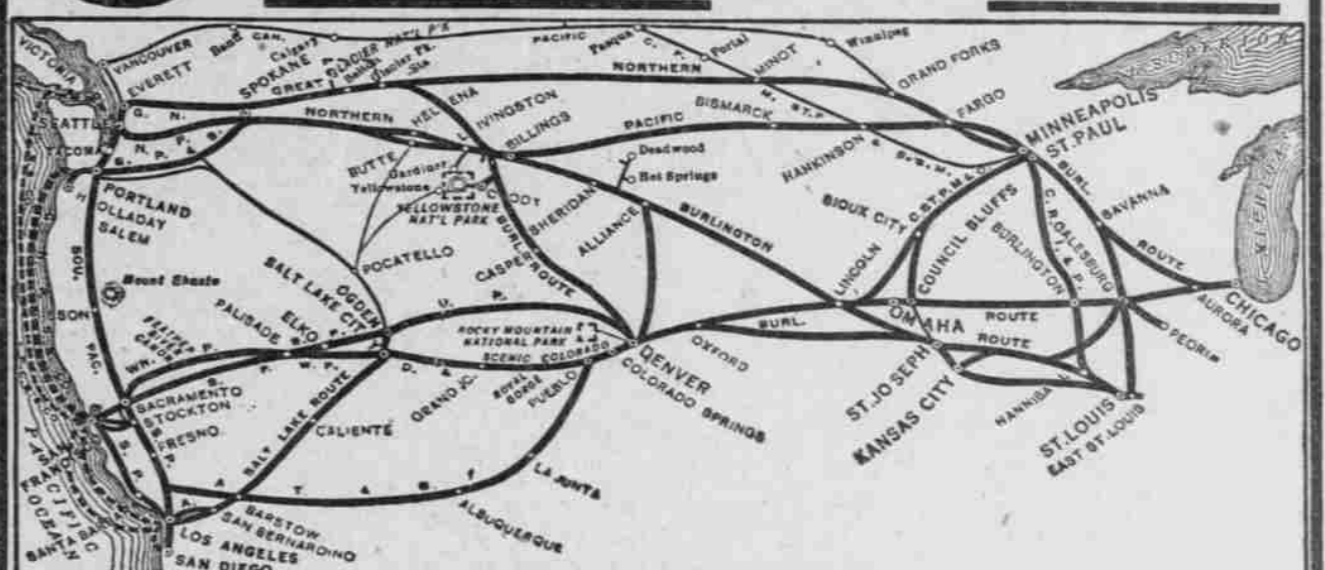
ROAD MEETING CALLED WASHINGTON ASSOCIATION TO CON-VENE AT ELLENSBURG. Apportionment of Funds and Standardizing of Specifications Topics. John B. Yeon To Attend. ELLENSBURG, Wash., Sept. 26.—The Washington State Good Roads Association will hold its annual convention at Ellensburg October 26 and 27. The programme will include many speakers of prominence from this state, and addresses have been arranged for from several men of prominence in the good roads movement outside of Washington.

Horse Exhibits Numerous. Among the 800 horses on exhibition are Standard Bred, American Carriage, saddle, high school, roadsters, French and German Coach, hackneys, Percherons, Belgians, English Shires, Clydesdales and Shetlands. The Shetlands number 78. The state's ability to raise the best

in sheep is shown in the quarters allotted to this division, where there are 275 animals of the Shropshire, Dorset Horn, Hampshire, Southdown, Oxford Down, Cotswold and Lincoln breeds. The county exhibits installed in the new pavilions are designed to impress the visitor with the wide range of the state's resources. Seventeen counties will have exhibits and tonight most of them were in place.

Are you a good guesser? The General says:—No man living can take three different kinds of Roofing and determine in advance by such tests as bending, twisting, tearing, or smelling, how long will last on the roof. The best you can do is to make a guess. That is why Certain-teed Roofing is guaranteed by us 10, 15 or 20 years according to whether the thickness is 1, 2 or 3 ply. Most roofings look alike, and even trained chemists can judge roofing quality only by the raw materials that are put into the roofing and not from the finished product. The responsibility of the biggest Roofing and Building Paper Mills in the world stands behind our guarantee and this makes it unnecessary for you to take the risk of guessing. Certain-teed Roofing has made good on the roof throughout the entire world. Ask your local dealer for further information. He will quote you reasonable prices. General Roofing Manufacturing Company

Thro' Service Routes to the East



They Include the Scenic, the Highly Developed Regions, the Attractive Cities of More Than Half the Continent. 4 From The Northwest. GREAT NORTHERN—Burlington to Chicago Glacier Park route, via Twin Cities. NORTHERN PACIFIC—Burlington to Chicago Yellowstone Park route, via Twin Cities. GREAT NORTHERN—Burlington to Kansas City Glacier Park route, via Billings. NORTHERN PACIFIC—Burlington to St. Louis Yellowstone Park route, via Billings.

5 From California via Salt Lake and Scenic Colorado. Ocean Coast Steamship or Shasta Route Service Connecting. Comprehensive Circuit Tour of Diverse Routes: The map illustrates the admirable combination of through service routes available between the Coast and the East, if your ticket reads "BURLINGTON." You may combine these through routes in a circuit tour that will include the widest geography of the West.

Burlington Route. R. W. FOSTER, General Agt., 100 Third Street, Portland, Oregon. Telephone Main 868—A 1245. (N W 955) FOR COMFORT FOR SCENERY

Special Trains To OREGON STATE FAIR Fair Grounds (Salem) Every Day This Week. Going Schedules Returning. Lv. Portland Union Depot 8:30 A. M. Lv. Salem 4:25 P. M. Arrive Fair Grounds 10:35 A. M. Lv. F. Gr.'s 4:40 P. M. Arrive Salem 10:45 A. M. Ar. Portl'd 6:50 P. M.

\$2.00 From Portland to Fair Grounds and Back. Tickets on Sale Daily to Oct. 2d. Final Return Limit Oct. 6th.

Exciting Races Every Day Read Programme and Make Your Plans to Attend. Program—Special Days. Monday, Sept. 27 Children's Day. Tuesday, Sept. 28 Woman's Day Good Roads Day. Wednesday, Sept. 29 Salem Day State Societies' Day Camper Night Willamette Valley Night. Thursday, Sept. 30 Portland Day Transportation Day Elks' Night. Friday, October 1 Press Day Scandinavian Day Oregon Manufacturers' Day. Saturday, October 2 Shriners' Day Grange Day Pioneer Day Carnival Night. Further particulars at City Ticket Office, 80 Sixth street, cor. Oak, Union Depot or E. Morrison Depot. Telephone, Broadway 2760, A 6704. SOUTHERN PACIFIC JOHN M. SCOTT, General Passenger Agent.

"PERFECT" COLLARS PALACE LAUNDRY. ROSEBURG, Or., Sept. 26.—(Special.)—Although W. W. Elder, deposed commandant of the Oregon Soldiers' Home, will not sever his connection with the institution until October 1, R. C. Markee, successor of the retiring commandant, will arrive here tomorrow from Portland. He was invited to come to Roseburg by Mr. Elder, that he might be conversant with his duties before assuming the management of the home. Mrs. Markee, it is understood, will act as matron of the home. R. R. Goodin, secretary of the board of control, has arrived here from Salem to advise the home prior to the change in commandants.

NEW COMMANDANT VISITS. R. C. Markee to Learn Duties at Home Before Taking Charge.

ROAD MEETING CALLED WASHINGTON ASSOCIATION TO CON-VENE AT ELLENSBURG. Apportionment of Funds and Standardizing of Specifications Topics. John B. Yeon To Attend.

Are you a good guesser? The General says:—No man living can take three different kinds of Roofing and determine in advance by such tests as bending, twisting, tearing, or smelling, how long will last on the roof. The best you can do is to make a guess. That is why Certain-teed Roofing is guaranteed by us 10, 15 or 20 years according to whether the thickness is 1, 2 or 3 ply. Most roofings look alike, and even trained chemists can judge roofing quality only by the raw materials that are put into the roofing and not from the finished product. The responsibility of the biggest Roofing and Building Paper Mills in the world stands behind our guarantee and this makes it unnecessary for you to take the risk of guessing. Certain-teed Roofing has made good on the roof throughout the entire world. Ask your local dealer for further information. He will quote you reasonable prices. General Roofing Manufacturing Company