

MONTESANO BUSY, FLOURISHING CITY

Great Future Seen for Dairy Industry in County Seat of Grays Harbor.

VAST RESOURCES AT HAND

Courthouse, Erected at Cost of \$350,000, Stands as Monument. Three Railroads Tap Area of 2600 Square Miles.

BY ADDISON BENNETT.
MONTESANO, Wash., Sept. 16.—(Special.)—Montesano is the county seat of Grays Harbor County, but let the reader remember that this town was given the county by the last state legislature. Before that it was called Chehalis County. That name was conferred for the reason that the City of Chehalis is situated in Lewis County, which corners with this county on the southeast. Hence the name was changed.

The town was named long ago when there were many foreigners here. The first settlement was at the foot of the hill, the town being on the Chehalis River. In Spanish the name means healthy mountain. At least that is the best information I could obtain. It is a flourishing city of something less than 3000 inhabitants. If it does not at some not far-distant day become a large city then it will be because resources and location backed by energy and brains, count for nothing.

County Contains 2600 Square Miles. That leads me to say a few words about the county as a whole. It is not an overly large county as western counties go. It contains 2600 square miles, being a little more than one-quarter the size of Harney County, Oregon. And yet with the exception of King, Pierce and Spokane counties, in which are the populous cities of Seattle, Tacoma and Spokane, it is the wealthiest county in Washington.

From its area, however, must be deducted 684 square miles not subject to taxation, there being ten townships in the Olympic Forest Reserve and nine townships in the Quinalt Indian reservation. Were those 19 townships, with their wealth of timber, included in the assessment, its wealth would closely approach that of Pierce County.

The first thing that attracts the eye of the newcomer in Montesano is the slightly elevated location. Surely there could be no finer townsite. It lies well above the tidelands of the Chehalis River, which flows through it from east to west, and the residential districts slope gradually up to the low-lying hills to the north. The streets are splendidly paved, the sidewalks and pavements lead to all parts of the city.

Courthouse Monument to City. Standing on what might be called the second bench is the beautiful courthouse, a monument of which any city might well be proud. It cost in excess of \$350,000 and is the finest county building in the state. It is surely a splendid example of the interior finish and equipments are in advance of its architectural beauty. For it contains paintings and decorations that are real works of art. It cost a good many thousands of dollars.

Next to the courthouse comes the great school building that cost \$35,000, and then the city hall, which cost \$20,000 to the municipality by or through the volunteer fire department members and their friends, at a cost of nearly \$2,000.

It has a good water system, is well lighted, has many fine churches, splendid business houses with large stocks of goods, two weekly newspapers, a bank, a creamery, a milk condenser, two sawmills, two shingle mills, numerous hotels, and a fine city street—in all ways it is a bustling and prosperous little city.

Bank Has Capital of \$50,000. The Montesano State Bank has a capital of \$50,000, surplus and profits of \$6,200 and deposits of \$100,000. A. D. Davenport is the president, W. H. France cashier. The First National Bank has a capital of \$100,000, surplus and profits of \$10,000 and deposits of \$100,718.16. P. L. Carr is the president, Rodman M. Price cashier.

The Washington Call is issued on Tuesdays and the Vidette on Fridays. These are both good and newsy papers and both offices are well equipped, each having a good Mergenthaler machine and other modern machinery, all run by electricity. The Vidette is in its 32d year; the Call in its fourth. A. R. Rankin is responsible for the former and A. E. Veitch for the latter.

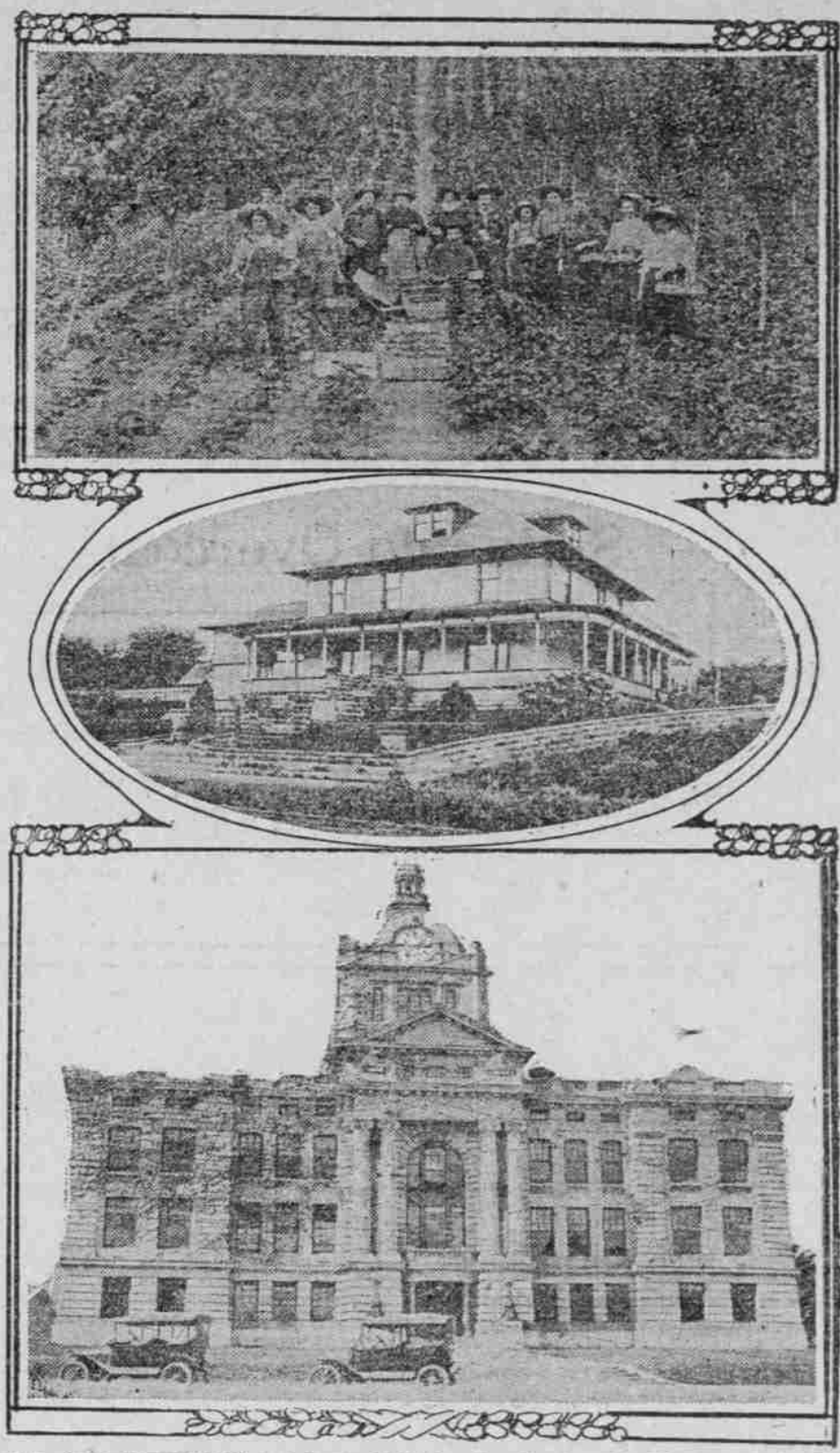
Three railroads has this growing metropolis, the O. W. R. & N., the Milwaukee coming in over the same track and the Northern Pacific on its own line. It is 12 miles from here to Aberdeen, almost due west, by boat, highway or railway. This is practically at the head of navigation on the Chehalis, but the tide extends up much further. The Satsop River flows into the Chehalis a couple of miles east of town and the Wynoochee River a few miles to the south.

Both to the east and west, as well as to the north of town, lie fine farming districts, and finer still up the two rivers mentioned. Then to the south, the eastern portion of the North River Valley is naturally tributary to Montesano.

Great Dairy Industry Foreseen. I was taken in a machine by members of the Montesano Chamber of Commerce and had a good view of adjacent agricultural lands, particularly of the Satsop Valley. If there is any place where the farmer can make money then this is one of the most favored. Some day Montesano is sure to be the center of a great dairy industry. Nature does nothing in vain and this section must have been intended by her as the home of the dairy cow and her follower—the hog. With all-winter pasture, the mild climate, the succulent grasses and the great growth of corn, clover, vetch, kale and other necessities for the silo and indoor feeding—with all of these advantages it only takes a little brains and a modest start for the dairyman here to reap wonderful success.

And it is cheering news to say that the best informed people of the town are turning their chief attention to enlarging the farming operations hereabouts and lending every possible aid to those wishing to embark in the dairy business. Land values are low when one considers the producing qualities of the land. Stories of 20 tons of vetch to the acre sound like fiction; yet they are true.

SCENES AT AND NEAR MONTESANO, HUSTLING WASHINGTON TOWN.



Top, Strawberry Field and Logged-Off Lands; Center, Residence of C. H. Clemmons; Below, Chehalis County Courthouse.

GRAPES GO TO HOGS

Thousands of Tons Dried for Feed in California.

WINE CROP STILL UNSOLD

Uncertainty Over Internal Revenue Tax, Complicated With Uncertain Prohibition Situation, Affects Local Market.

Two-Year Trial Satisfactory

I traveled several miles over such a road today. It has been down for two years and has proved satisfactory. I was particularly attracted by the guideposts put in each mile. On the top of a nice post, about ten feet high, is a 30-inch shingle saw and on it the distances, etc. These saws cost nothing, the mills being glad to get rid of them. They in any way indicate the chief industry of the section and look mighty neat, being well painted and the lettering artistically done.

GRAPE CARNIVAL ATTRACTS PASCO AND PROSSER DAY AT KENNEWICK FULL OF MERRIMENT

KENNEWICK, Wash., Sept. 16.—(Special.)—Festivities at the Columbia River Valley Grape Carnival reached the climax yesterday. This being Pasco and Prosser day a large number of people attended from those places. A Mardi Gras parade and masque was participated in by most of the attendants.

W. C. T. U. WILL CONVENE

Oregon City Meeting Planned by Clackamas Organization.

Dayton Holds Astor Show

DAYTON, Wash., Sept. 16.—(Special.)—Dayton's third annual Astor Show was held at the Congregational Church Tuesday, and despite the unusually dry summer, there were as many beautiful exhibits as ever. Awarards were given for asters, roses and dahlias, and many other decorative flowers were in evidence. Golden-glow, native asters, and wild clematis were used to trim the rooms. Luncheon was served and the affair was successful financially.

JACKSON PIONEERS GATHER

Memorial Services Feature of Reunion of \$50 at Ashland.

ASHLAND, Or., Sept. 16.—(Special.)

The 29th annual reunion of the Pioneer Association of Jackson County was held here today with an overflowing attendance. The liturgy and musical programme was given in the Vining Theater, the main address being by Professor Irving Vining, of this city, a direct pioneer descendant. The banquet was served in the Elks Temple, covers being laid for more than 250 guests.

NIGHT-RIDER CASE SHIFTS

Washington Judge Transfers Trials to Lewis County.

CHEHALIS, Wash., Sept. 16.—(Special.)

The night-rider cases, which attracted considerable attention in Pacific County, have been transferred by E. H. Wright, judge of that county, to Lewis County for trial. It is understood that about 50 defendants are yet to be tried in these cases. Some months ago attorneys for the defense asked for a change of judges. Judge Wright called an outside judge to hear two cases, and his answer to the motion for change of the transfer of all the remaining cases to Lewis County.

RAILROADS PLAN TO SUE

Six Washington Lines Will Try to Have Taxes Reduced.

OLYMPIA, Wash., Sept. 16.—(Special.)

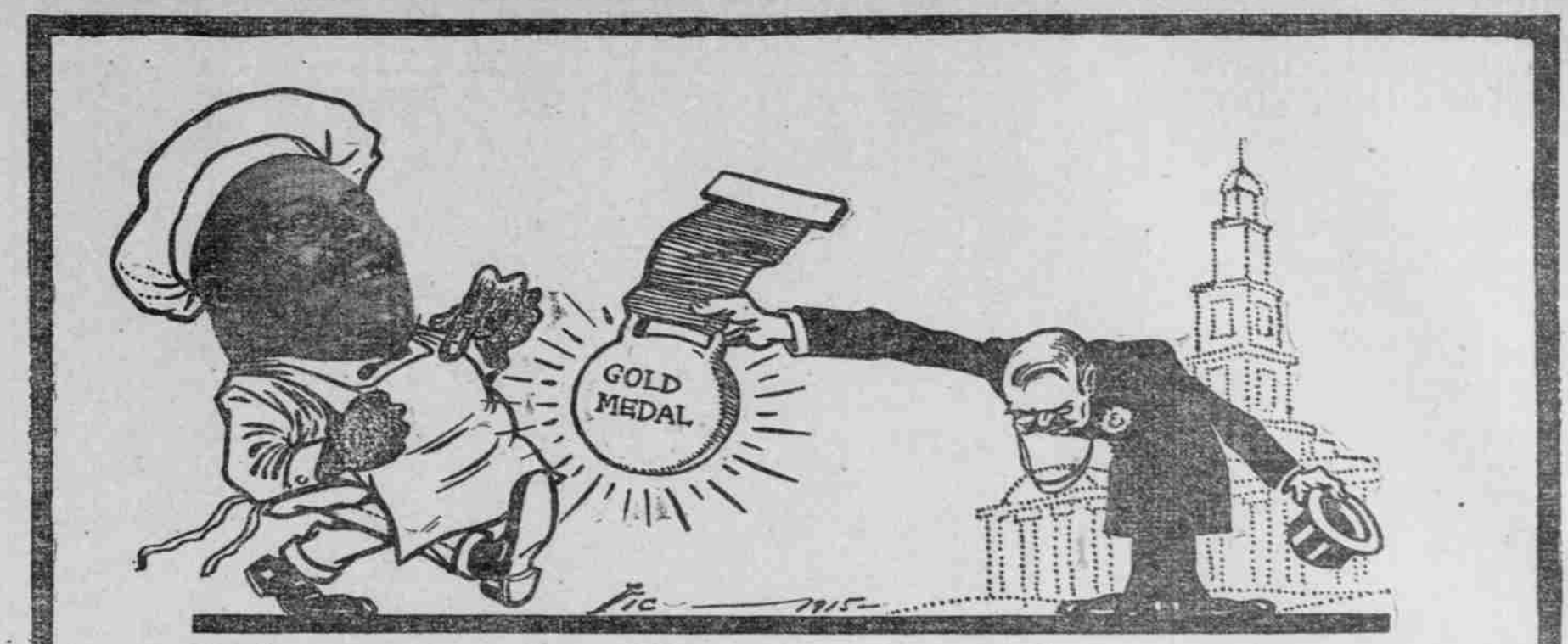
In the event that the Washington State Board of Equalization, now in session, declines to adopt substantially the proposal of the large railroads to reduce county rates, suits by the six largest lines—Northern Pacific, Great Northern, O. W. R. & N., Milwaukee, Portland & Seattle, and Spokane & Inland—contesting their 1915 taxes are probable.

Y. M. C. A. PLANS BONDS

\$15,000 Wanted to Meet Debt on New Building at Baker.

BAKER, Or., Sept. 16.—(Special.)

Tentative plans for the floating of a \$15,000 bond issue were made at a meeting of the Y. M. C. A. board of directors today, and W. A. Halliday, George H. Foster and Dr. J. W. Huff, members of the board, will at once outline the institution now has a debt of \$15,000 on which it is paying 8 per cent, and it believes that it can float bonds in small amounts bearing 6 per cent to meet this debt. The Y. M. C. A. built a handsome building two years ago and has been carrying the heavy debt since.



FISHER'S BLEND FLOUR AWARDED GOLD MEDAL

FISHER'S BLEND FLOUR, manufactured by the Fisher Flouring Mills Co. has been awarded a gold medal by the jury of Awards of the Panama Pacific International Exposition.

FEES DISTURB STUDENTS

WASHINGTON ATTENDANTS HOLD MASS MEETING OF PROTEST.

UNIVERSITY OF WASHINGTON, Seattle, Sept. 16.—(Special.)

Whether the University of Washington can continue to collect the \$10 matriculation fee for all entering freshmen and the \$10 tuition fee for all students of the university, as provided by the last session of the Legislature, is to be decided next Monday in Judge Gilliam's department of the Superior Court, following the action brought by a number of students who declare that fees imposed violate that section of the state constitution which reads that education in the higher institutions of learning shall be "free and open." Dr. Henry M. Suzzallo, Herbert T. Condon, Bursar and the board of regents are named as defendants. Meanwhile the fees are being collected.

NEW PASTOR IS INSTALLED

Hymn Sung at Newberg Ceremony Composed by Initiate's Father.

NEWBERG, Or., Sept. 16.—(Special.)

Rev. George H. Lee was installed pastor of the Presbyterian Church here last night. He came to Newberg several months ago from Seattle, where he had been located for a number of years. An unusual incident in these services was the singing of a hymn written by Rev. William B. Lee, father of the candidate, for his own installation in Brooklyn in 1860 and which has been used since in the installation of his sons, the late Rev. Trumbull Lee, of Pittsburg; Rev. William Wallace Lee, of Albany, Or.; Rev. Lewis Earle Lee, of Cincinnati; and Rev. George H. Lee.

Prairie Chicken Season Yet Closed.

GOLDENDALE, Wash., Sept. 16.—(Special.)—The contention of Kllickitat sportsmen that the season opened on prairie chickens in 1915 is not upheld by State Game Warden Wales, of Spokane, who has announced that the only game birds that can be lawfully killed

WASHINGTON ATTENDANTS HOLD MASS MEETING OF PROTEST.

"Anti-Militarists" Oppose Compulsory Drill and Increase in Cost of Military Suits.

UNIVERSITY OF WASHINGTON, Seattle, Sept. 16.—(Special.)

Whether the University of Washington can continue to collect the \$10 matriculation fee for all entering freshmen and the \$10 tuition fee for all students of the university, as provided by the last session of the Legislature, is to be decided next Monday in Judge Gilliam's department of the Superior Court, following the action brought by a number of students who declare that fees imposed violate that section of the state constitution which reads that education in the higher institutions of learning shall be "free and open." Dr. Henry M. Suzzallo, Herbert T. Condon, Bursar and the board of regents are named as defendants. Meanwhile the fees are being collected.

NEW PASTOR IS INSTALLED

Hymn Sung at Newberg Ceremony Composed by Initiate's Father.

NEWBERG, Or., Sept. 16.—(Special.)

Rev. George H. Lee was installed pastor of the Presbyterian Church here last night. He came to Newberg several months ago from Seattle, where he had been located for a number of years. An unusual incident in these services was the singing of a hymn written by Rev. William B. Lee, father of the candidate, for his own installation in Brooklyn in 1860 and which has been used since in the installation of his sons, the late Rev. Trumbull Lee, of Pittsburg; Rev. William Wallace Lee, of Albany, Or.; Rev. Lewis Earle Lee, of Cincinnati; and Rev. George H. Lee.

Prairie Chicken Season Yet Closed.

GOLDENDALE, Wash., Sept. 16.—(Special.)—The contention of Kllickitat sportsmen that the season opened on prairie chickens in 1915 is not upheld by State Game Warden Wales, of Spokane, who has announced that the only game birds that can be lawfully killed

BUY IN SEPTEMBER FROM NORTHERN PACIFIC RY.

At a Considerable Reduction

EXCURSION TICKETS EAST

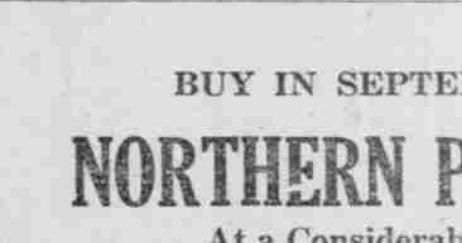
To all points in Middle West, the Eastern States and Canada.

\$7250 To Chicago To St. Louis \$7120

Those are low rates, and relatively low rates to all other Eastern points. Call and inquire.

QUICK THROUGH SERVICE TO MINNEAPOLIS, ST. PAUL, CHICAGO, ST. LOUIS Famous Northern Pacific Dining Service on All Trains

TICKETS and All Information and Assistance Given at 255 Morrison St. Phones Main 244, A 1244 A. D. Charlton, A. G. P. A. Portland, Or.



Those are low rates, and relatively low rates to all other Eastern points. Call and inquire.

QUICK THROUGH SERVICE TO MINNEAPOLIS, ST. PAUL, CHICAGO, ST. LOUIS Famous Northern Pacific Dining Service on All Trains

TICKETS and All Information and Assistance Given at 255 Morrison St. Phones Main 244, A 1244 A. D. Charlton, A. G. P. A. Portland, Or.

In Observance of Jewish Holiday Our Shop Will Be Closed Saturday. We Will Reopen From 6 to 10 P. M. Saturday Night.

Clothes of Culture Washington St. at Sixth