

ANTI-TRUST PLANS SUFFER SETBACK

Government's Next Move in Cash Register Case Awaits Harvester Decision.

LITTLE COMFORT IS FOUND

Whole Programme Undetermined as Result of Higher Court's Failure to Give Reasons for Dismissal of Appeal.

OREGONIAN NEWS BUREAU, Washington, June 20.—The refusal of the United States Supreme Court to review the decision of the Circuit Court of Appeals for the Sixth District in the National Cash Register case, in effect confirmed the decision adverse to the Government, and made a change in the plans of the Department of Justice to prosecute the officials of other so-called trust companies...

Under a recent act of Congress, however, it was believed by the Government lawyers that the Supreme Court was at liberty to disregard the rule in question.

Under a recent act of Congress, however, it was believed by the Government lawyers that the Supreme Court was at liberty to disregard the rule in question. Much Depends on Harvester Case.

UMATILLA RANCHER 109

Pioneer of Nye Remembers Vaguely American War of 1812.

PENDLETON, Or., June 20.—(Special.)—J. H. Foster, 129 years old, a pioneer resident of Nye, is held out as the premier testimonial of Umatilla County's salubrious climate.

Another transfer made by Cundiff & Moody was the sale to R. N. Stanfield of 210 yearlings and lambs, \$45,000 being the net price.

\$71,780 PAID TO SHEEPMEN

Wool Sold at Baker for \$26,780 and Stock for \$45,000 More.

BAKER, Or., June 20.—(Special.)—Wool and sheep deals involving \$71,780 were consummated Saturday by Cundiff & Moody, of this city.

LOGGERS GET INSTRUCTION

Men in Lumber Camps Take Interest in First-Aid Work.

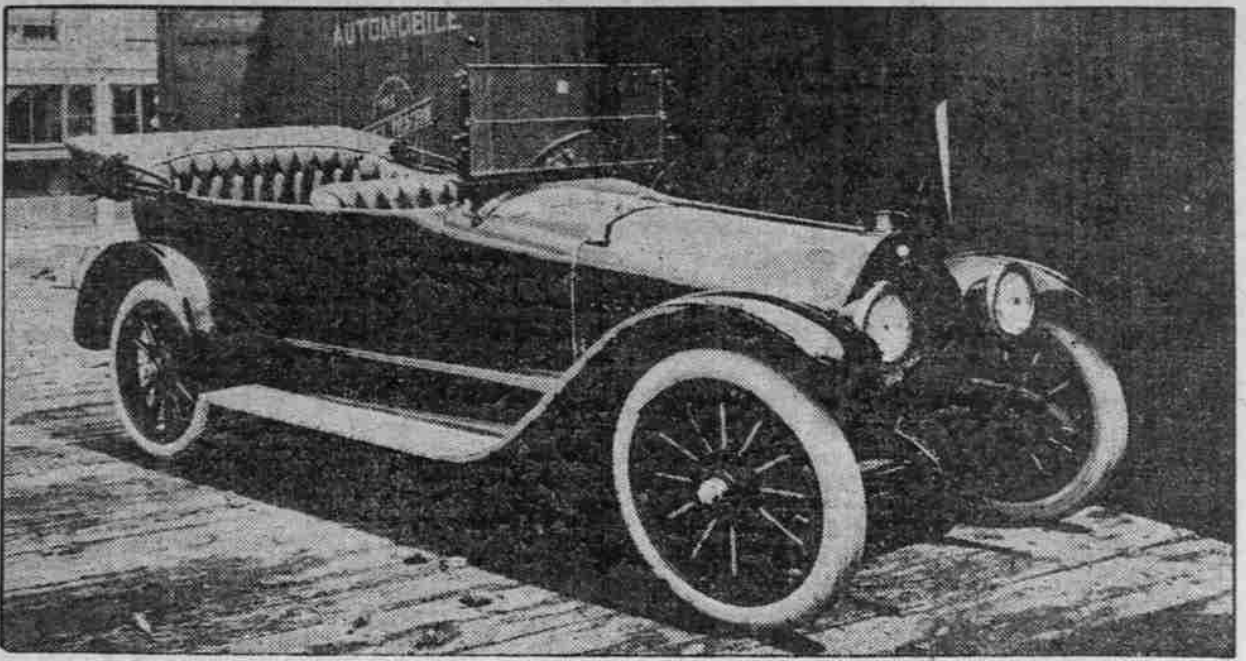
OLYMPIA, Wash., June 20.—(Special.)—Workers in logging camps are responding with enthusiasm to first aid instruction being given them by Red Cross physicians, who in a special car have started a tour of all logging works in the state.

CONDON POSTOFFICE TO BE MOVED.

OREGONIAN NEWS BUREAU, Washington, June 20.—The postoffice at Condon, Or., will move into new quarters on the west side of Main street, between Gilliam and Walnut, October 1.

CHRONOLOGY OF CHIEF EVENTS OF THE WAR TO DATE.

PROGRESS OF THE PAST WEEK. June 15—Allied airmen kill 200 persons in Karlsruhe, Germany. June 18—One Russian column driven from Central Galicia into Russia. EARLIER EVENTS OF THE WAR. June 28, 1914—Grand Duke Francis Ferdinand, heir to Austrian throne, and his wife assassinated in Sarajevo, Bosnia, as result of Pan-Slavic propaganda.



HERE TODAY Your Car THE SIX OF '16 Has Arrived

Not a Four with a 6-cylinder motor. Not a cheap imitation of a last season's model. A real Six—big and strong as you could wish—light enough (under 3000 lbs.) to please you, with low maintenance cost. 42 H. P. motor. Complete electric equipment. One-man top. Genuine leather upholstery. A real Six at the price of a Four

Now on Display at Mitchell-Lewis & Staver Co.

\$1250 at Racine



East First and East Morrison

WOMAN'S AIDES RESIGN

WASHINGTON SCHOOL HEADS OFFICE FORCE QUILTS.

Employees Said to Take Exception to Mrs. Preston's Order That Time Be Kept on All Work.

OLYMPIA, Wash., June 20.—(Special.)—The tranquility of the administration of Mrs. Josephine Preston, State Superintendent of Public Instruction, was marred Saturday by announcement of the resignation en masse of the major portion of her office force.

RAILWAY SURVEY IS ON

EXTENSION OF ST. PAUL ROAD IN IDAHO IS HOPED FOR.

Building of Line to Haul Out Timber of Clearwater Country, Swept by Fire Last Year, Expected.

LEWISTON, Idaho, June 20.—(Special.)—A surveying crew is working toward the Clearwater country, and reports brought here strengthen the hope for the extension of the Chicago, Milwaukee & St. Paul Railway into that section.

HOSTS UNDER FIRE

Junketers Begin to Question Hawaiian Hospitality.

Question Whether Free Vacation of Members of Congress Was Paid For by Private Interests Now Being Raised.

OREGONIAN NEWS BUREAU, Washington, June 20.—Now that 60 or more Senators and Representatives have enjoyed a six weeks' junket to Hawaii free of cost to themselves, suspicion has been cast on the trip, which, supposedly, was financed by the Hawaiian government.

INFORMATION FOR TOURISTS

Mountain, River and Beach Resorts Where To Take a Short Trip Out of Portland

Herewith is a list of short trips in and about Portland. If you are in doubt about any point, or the trip you have heard about is not mentioned here, call at the Information Bureau of the Chamber of Commerce or phone them—Bell Phone, Broadway 520 or Automatic, A 6091.



Hillcrest Drive—A hillside motor-drive of unsurpassed beauty. About one hour's drive. Best time just at sunset, but most beautiful view of city and mountains at all times.

Columbia River Excursions—Steamers leave Portland daily in the summer season up the scenic Columbia. A trip of unsurpassed beauty. It is possible to travel one way by rail and the other by water.

Portland Heights (Council Crest)—1200 feet above the city. Take Council Crest car on Washington street; time, 30 minutes each way. Wonderful view of the city and snow-capped mountains.

Estacada, Casadero, Bull Run cars leave First and Alder every four hours, daily and Sunday, every hour as far as Gresham. Good points for basket picnic.

Rockaway Beach—Elmora Park, Garibaldi Beach and Tillamook beaches reached by train in a few hours. Splendid beach and good hotels.

MOUNT HOOD RESORTS. Cloud Cap Inn is a delightful retreat, 6000 feet above sea level, on a sheltered spur of the very mountain itself, and is located just at the upper edge of timber line.

Electric car line to Boring, 24 miles, automobile to Welch, Rhododendron and Tawney's, round trip from Portland, \$7.75. Same as above with horse stage all the way, \$6.75.

WELCH'S HOTEL. Oldest resort in the Mount Hood district. Good water, airy bunkrooms, excellent cuisine, hunting, fishing, horseback riding, etc. Rates \$2 per day, \$10 per week.

W. E. WELCH, Prop., Welch's P. O., Oregon.

For SIGHTSEEING or OUTING TRIPS Around Portland

Call First and Alder or Traffic Manager. Marshall 5100, A 6131. P. R. L. & P. Co.

THE HAZELWOOD. Washington St., at Tenth. SEATING CAPACITY 450. A Few Specials

Baked Salmon.....25c Baked Halibut.....25c Fried Spring Chicken.....50c Cracked Crab.....35c Strawberry Shortcake.....25c Raspberries and Cream.....15c HAZELWOOD ORCHESTRA.

Freight and Passenger STEAMERS TO THE DALLES and Way Landings "BAILEY GATZERT" Leaves Portland every 7 A. M. except Sunday and Monday. Sunday except to Cascade Locks leave 9 A. M.

"DALLES CITY" Leaves Portland Tuesday, Thursday and Saturday at 8:30 A. M. Sunday Cascade Locks excursion \$1.00 Fare to the Dalles and return \$5.00. Make reservations for stock and automobiles.

ALDER-STREET DOCK, PORTLAND. Phone Main 514, A 5112.

WELCH'S HOTEL. Oldest resort in the Mount Hood district. Good water, airy bunkrooms, excellent cuisine, hunting, fishing, horseback riding, etc. Rates \$2 per day, \$10 per week.

W. E. WELCH, Prop., Welch's P. O., Oregon.

White Salmon Valley and Vicinity—A wonderfully scenic ride over the North Bank Railroad or by excursion steamer. On the bluffs overlooking the Columbia River are resorts with scenery rivaling the Alps.

Washington Park—head of Washington street, with small zoo and aviary. Take any car west on Washington street excepting Sixteenth; fare 5 cents. Celebrated statue, "Coming of the White Man," also "Saccajawea." Excellent view of the city.

COLUMBIA RIVER HIGHWAY. A scenic drive of rare beauty, built along the south shore of the Columbia River, a distance of more than 40 miles from Portland. A series of remarkable waterfalls, rugged peaks and deep canyons are among the attractions.

The Oaks (the Coney Island of the West)—Over 50 acres of priceless roses in full bloom, with every form of entertainment and accommodation for tourists. Orchestral and band concerts, prima donna, and musical comedy company every afternoon and night in the open-air theater. Performance all free. Admission to park 10 cents. Reached by express special Oaka trains (fare 5 cents), from First and Alder; or by launch (10 cents), from Morrison-street Bridge.

WOODARD, CLARKE & CO. Woodlark Bldg., Alder at W. Park.

WOODARD, CLARKE & CO. Woodlark Bldg., Alder at W. Park.

WOODARD, CLARKE & CO. Woodlark Bldg., Alder at W. Park.

WOODARD, CLARKE & CO. Woodlark Bldg., Alder at W. Park.

WOODARD, CLARKE & CO. Woodlark Bldg., Alder at W. Park.

WOODARD, CLARKE & CO. Woodlark Bldg., Alder at W. Park.

WOODARD, CLARKE & CO. Woodlark Bldg., Alder at W. Park.

WOODARD, CLARKE & CO. Woodlark Bldg., Alder at W. Park.

WOODARD, CLARKE & CO. Woodlark Bldg., Alder at W. Park.

WOODARD, CLARKE & CO. Woodlark Bldg., Alder at W. Park.

WOODARD, CLARKE & CO. Woodlark Bldg., Alder at W. Park.

WOODARD, CLARKE & CO. Woodlark Bldg., Alder at W. Park.

WOODARD, CLARKE & CO. Woodlark Bldg., Alder at W. Park.

WOODARD, CLARKE & CO. Woodlark Bldg., Alder at W. Park.

WOODARD, CLARKE & CO. Woodlark Bldg., Alder at W. Park.

WOODARD, CLARKE & CO. Woodlark Bldg., Alder at W. Park.

WOODARD, CLARKE & CO. Woodlark Bldg., Alder at W. Park.

WOODARD, CLARKE & CO. Woodlark Bldg., Alder at W. Park.

WOODARD, CLARKE & CO. Woodlark Bldg., Alder at W. Park.

WOODARD, CLARKE & CO. Woodlark Bldg., Alder at W. Park.

WOODARD, CLARKE & CO. Woodlark Bldg., Alder at W. Park.

WOODARD, CLARKE & CO. Woodlark Bldg., Alder at W. Park.

WOODARD, CLARKE & CO. Woodlark Bldg., Alder at W. Park.

WOODARD, CLARKE & CO. Woodlark Bldg., Alder at W. Park.

WOODARD, CLARKE & CO. Woodlark Bldg., Alder at W. Park.

WOODARD, CLARKE & CO. Woodlark Bldg., Alder at W. Park.



press special Oaka trains (fare 5 cents), from First and Alder; or by launch (10 cents), from Morrison-street Bridge.

WOODARD, CLARKE & CO. Woodlark Bldg., Alder at W. Park.

WOODARD, CLARKE & CO. Woodlark Bldg., Alder at W. Park.

WOODARD, CLARKE & CO. Woodlark Bldg., Alder at W. Park.

WOODARD, CLARKE & CO. Woodlark Bldg., Alder at W. Park.

WOODARD, CLARKE & CO. Woodlark Bldg., Alder at W. Park.

WOODARD, CLARKE & CO. Woodlark Bldg., Alder at W. Park.

WOODARD, CLARKE & CO. Woodlark Bldg., Alder at W. Park.

WOODARD, CLARKE & CO. Woodlark Bldg., Alder at W. Park.

WOODARD, CLARKE & CO. Woodlark Bldg., Alder at W. Park.

AnSCO Agents

WOODARD, CLARKE & CO. Woodlark Bldg., Alder at W. Park.

WOODARD, CLARKE & CO. Woodlark Bldg., Alder at W. Park.

WOODARD, CLARKE & CO. Woodlark Bldg., Alder at W. Park.

WOODARD, CLARKE & CO. Woodlark Bldg., Alder at W. Park.

WOODARD, CLARKE & CO. Woodlark Bldg., Alder at W. Park.

WOODARD, CLARKE & CO. Woodlark Bldg., Alder at W. Park.

WOODARD, CLARKE & CO. Woodlark Bldg., Alder at W. Park.

WOODARD, CLARKE & CO. Woodlark Bldg., Alder at W. Park.

WOODARD, CLARKE & CO. Woodlark Bldg., Alder at W. Park.

WOODARD, CLARKE & CO. Woodlark Bldg., Alder at W. Park.

WOODARD, CLARKE & CO. Woodlark Bldg., Alder at W. Park.

WOODARD, CLARKE & CO. Woodlark Bldg., Alder at W. Park.

WOODARD, CLARKE & CO. Woodlark Bldg., Alder at W. Park.

WOODARD, CLARKE & CO. Woodlark Bldg., Alder at W. Park.

WOODARD, CLARKE & CO. Woodlark Bldg., Alder at W. Park.

WOODARD, CLARKE & CO. Woodlark Bldg., Alder at W. Park.

WOODARD, CLARKE & CO. Woodlark Bldg., Alder at W. Park.

WOODARD, CLARKE & CO. Woodlark Bldg., Alder at W. Park.

WOODARD, CLARKE & CO. Woodlark Bldg., Alder at W. Park.

WOODARD, CLARKE & CO. Woodlark Bldg., Alder at W. Park.

WOODARD, CLARKE & CO. Woodlark Bldg., Alder at W. Park.

WOODARD, CLARKE & CO. Woodlark Bldg., Alder at W. Park.

WOODARD, CLARKE & CO. Woodlark Bldg., Alder at W. Park.

WOODARD, CLARKE & CO. Woodlark Bldg., Alder at W. Park.

WOODARD, CLARKE & CO. Woodlark Bldg., Alder at W. Park.

WOODARD, CLARKE & CO. Woodlark Bldg., Alder at W. Park.

WOODARD, CLARKE & CO. Woodlark Bldg., Alder at W. Park.

WOODARD, CLARKE & CO. Woodlark Bldg., Alder at W. Park.

WOODARD, CLARKE & CO. Woodlark Bldg., Alder at W. Park.

WOODARD, CLARKE & CO. Woodlark Bldg., Alder at W. Park.

WOODARD, CLARKE & CO. Woodlark Bldg., Alder at W. Park.

WOODARD, CLARKE & CO. Woodlark Bldg., Alder at W. Park.

WOODARD, CLARKE & CO. Woodlark Bldg., Alder at W. Park.

WOODARD, CLARKE & CO. Woodlark Bldg., Alder at W. Park.

WOODARD, CLARKE & CO. Woodlark Bldg., Alder at W. Park.

WOODARD, CLARKE & CO. Woodlark Bldg., Alder at W. Park.

WOODARD, CLARKE & CO. Woodlark Bldg., Alder at W. Park.

WOODARD, CLARKE & CO. Woodlark Bldg., Alder at W. Park.

WOODARD, CLARKE & CO. Woodlark Bldg., Alder at W. Park.

WOODARD, CLARKE & CO. Woodlark Bldg., Alder at W. Park.

WOODARD, CLARKE & CO. Woodlark Bldg., Alder at W. Park.

WOODARD, CLARKE & CO. Woodlark Bldg., Alder at W. Park.

WOODARD, CLARKE & CO. Woodlark Bldg., Alder at W. Park.

WOODARD, CLARKE & CO. Woodlark Bldg., Alder at W. Park.

WOODARD, CLARKE & CO. Woodlark Bldg., Alder at W. Park.

WOODARD, CLARKE & CO. Woodlark Bldg., Alder at W. Park.

WOODARD, CLARKE & CO. Woodlark Bldg., Alder at W. Park.

WOODARD, CLARKE & CO. Woodlark Bldg., Alder at W. Park.

WOODARD, CLARKE & CO. Woodlark Bldg., Alder at W. Park.

WOODARD, CLARKE & CO. Woodlark Bldg., Alder at W. Park.

WOODARD, CLARKE & CO. Woodlark Bldg., Alder at W. Park.

WOODARD, CLARKE & CO. Woodlark Bldg., Alder at W. Park.

WOODARD, CLARKE & CO. Woodlark Bldg., Alder at W. Park.

WOODARD, CLARKE & CO. Woodlark Bldg., Alder at W. Park.

WOODARD, CLARKE & CO. Woodlark Bldg., Alder at W. Park.

WOODARD, CLARKE & CO. Woodlark Bldg., Alder at W. Park.

WOODARD, CLARKE & CO. Woodlark Bldg., Alder at W. Park.

WOODARD, CLARKE & CO. Woodlark Bldg., Alder at W. Park.

WOODARD, CLARKE & CO. Woodlark Bldg., Alder at W. Park.

WOODARD, CLARKE & CO. Woodlark Bldg., Alder at W. Park.

WOODARD, CLARKE & CO. Woodlark Bldg., Alder at W. Park.

WOODARD, CLARKE & CO. Woodlark Bldg., Alder at W. Park.

WOODARD, CLARKE & CO. Woodlark Bldg., Alder at W. Park.

WOODARD, CLARKE & CO. Woodlark Bldg., Alder at W. Park.

WOODARD, CLARKE & CO. Woodlark Bldg., Alder at W. Park.

WOODARD, CLARKE & CO. Woodlark Bldg., Alder at W. Park.

WOODARD, CLARKE & CO. Woodlark Bldg., Alder at W. Park.

WOODARD, CLARKE & CO. Woodlark Bldg., Alder at W. Park.

WOODARD, CLARKE & CO. Woodlark Bldg., Alder at W. Park.

WOODARD, CLARKE & CO. Woodlark Bldg., Alder at W. Park.

WOODARD, CLARKE & CO. Woodlark Bldg., Alder at W. Park.

WOODARD, CLARKE & CO. Woodlark Bldg., Alder at W. Park.

WOODARD, CLARKE & CO. Woodlark Bldg., Alder at W. Park.

WOODARD, CLARKE & CO. Woodlark Bldg., Alder at W. Park.

WOODARD, CLARKE & CO. Woodlark Bldg., Alder at W. Park.

WOODARD, CLARKE & CO. Woodlark Bldg., Alder at W. Park.

WOODARD, CLARKE & CO. Woodlark Bldg., Alder at W. Park.

WOODARD, CLARKE & CO. Woodlark Bldg., Alder at W. Park.

WOODARD, CLARKE & CO. Woodlark Bldg., Alder at W. Park.

WOODARD, CLARKE & CO. Woodlark Bldg., Alder at W. Park.

WOODARD, CLARKE & CO. Woodlark Bldg., Alder at W. Park.

WOODARD, CLARKE & CO. Woodlark Bldg., Alder at W. Park.

WOODARD, CLARKE & CO. Woodlark Bldg., Alder at W. Park.

WOODARD, CLARKE & CO. Woodlark Bldg., Alder at W. Park.

WOODARD, CLARKE & CO. Woodlark Bldg., Alder at W. Park.

WOODARD, CLARKE & CO. Woodlark Bldg., Alder at W. Park.

WOODARD, CLARKE & CO. Woodlark Bldg., Alder at W. Park.

WOODARD, CLARKE & CO. Woodlark Bldg., Alder at W. Park.

WOODARD, CLARKE & CO. Woodlark Bldg., Alder at W. Park.

WOODARD, CLARKE & CO. Woodlark Bldg., Alder at W. Park.

WOODARD, CLARKE & CO. Woodlark Bldg., Alder at W. Park.

WOODARD, CLARKE & CO. Woodlark Bldg., Alder at W. Park.

WOODARD, CLARKE & CO. Woodlark Bldg., Alder at W. Park.

WOODARD, CLARKE & CO. Woodlark Bldg., Alder at W. Park.

WOODARD, CLARKE & CO. Woodlark Bldg., Alder at W. Park.

WOODARD, CLARKE & CO. Woodlark Bldg., Alder at W. Park.

WOODARD, CLARKE & CO. Woodlark Bldg., Alder at W. Park.

WOODARD, CLARKE & CO. Woodlark Bldg., Alder at W. Park.

WOODARD, CLARKE & CO. Woodlark Bldg., Alder at W. Park.

WOODARD, CLARKE & CO. Woodlark