

# PROSPERITY PARADE IS BIG EVENT TODAY

### Development of Portland and Oregon to Be Represented by Four Divisions.

### START WILL BE AT 10:30

### Governor Withycombe Will Take Part, as Will Military, Civic, Fra- ternal and Industrial Organ- izations of City and State.

- ROUTE OF PROSPERITY PARADE THIS MORNING.**
- North on Fourteenth to Morrison.
  - East on Morrison to Tenth.
  - North on Tenth to Alder.
  - East on Alder to Broadway.
  - South on Broadway to Taylor.
  - West on Taylor to West Park.
  - South on West Park to Jefferson.
  - East on Jefferson to Park.
  - North on Park to Salmon.
  - East on Salmon to Sixth.
  - North on Sixth to Morrison.
  - East on Morrison to Fourth.
  - South on Fourth to Third.
  - East on Taylor to Third.
  - North on Third to Pine.
  - West on Pine to Alder.
  - South on Alder to Sixth.
  - North on Sixth to Washington.
  - East on Washington to Fifth.
  - North on Fifth to Pine.
  - East on Pine to Broadway.
  - South on Broadway to Wash-  
ington.
  - West on Washington to Tenth.
  - North on Tenth to Stark.
  - West on Stark to Thirteenth and  
disband.

Every element that contributes to the development of Portland, of Oregon and of the Northwest will be represented faithfully in the big "prosperity day" parade through the principal business streets this morning.

This parade will consist of four principal departments—military, fraternal, civic and industrial. Each department already has been prepared under the parade in itself, but the four big departments will be woven together into one mighty pageant for the general approval of Portland and her guests.

Adjutant-General George A. White is grand marshal of today's big pageant, which has been prepared under the general direction of George L. Baker, of the board of festival managers.

Because it is the longest parade the parade will require more than four hours in passing, the scheduled time for starting has been set at 10:30 o'clock.

### Mr. Withycombe to Take Part.

Governor Withycombe will ride in the pageant, as well as other state officials and most of the city officials.

Queen Sybil and her court will have prominent places in the line.

There will be two military divisions and they promise to be among the most impressive of the entire formation. The Twenty-first Regiment of United States Infantry at Vancouver barracks will be here, together with the Regimental band and officers. They will have the place of honor at the head of the line. Then will follow the various units of the Oregon National Guard—the Third Infantry, the Coast Artillery, the cavalry and the infantry troops. In this section also will march the Grand Army veterans, the Spanish-American war veterans and other military organizations. The letter-carriers and their band will be included in the military division.

### Police Band to Lead Contingent.

The police band will have the honor of leading the third division, in which Queen Sybil and her court will ride. The Rose Festival parade will follow the queen in automobiles. Following them will come a big body of Woodmen of the World, in uniform and the Woodmen band. It is predicted that more than 500 Woodmen will be in line.

### Elks' Band to Lead Contingent.

The Elks' band will march at the head of another contingent of fraternal organizations.

The Loyal Order of Moose will be out in uniforms, with a band and an attractive float.

### An interesting division will be that commanded by J. E. Werlein. This division will include all the visiting marching organizations, such as the Cherrians, of Salem; the Radiators, of Eugene; the Fallsarians, of Oregon City; the Pleasants, of Albany, and many Portland organizations. The Royal Rosarian band and the uniformed Rosarians themselves will be a part of this division. Other entries include the Multnomah Club, the Young Men's Christian Association, Boy Scouts and Junior National Guard.

### The Firemen's band will head the sixth division, which will include a number of fraternal organizations, among them the Knights and Ladies of Security, the Royal Arcanum, the Ancient Order of United Workmen, the Degree of Honor, the Order of Druids, the Tribe of Ben Hur and several others.

### The Catholic Order of Foresters has arranged for attractive participation and will be placed in the eighth division.

### O.-W. R. & N. Co. to Have Division.

The O.-W. R. & N. Company alone will fill a whole division—the ninth. The company has invited more than 40 young women employed in its principal offices outside of Portland to attend the Festival as its guests. They will be dressed uniformly and ride on artistically-decorated floats. The Harriman Club, composed of employees of the O.-W. R. & N. Company and the Southern Pacific, also will appear in this division.

The remaining three divisions will be devoted to industrial participation. Substantial cash prizes have been offered for excellence in each department and many wonderful entries have been created as a result. One of the entries that promises to attract much attention will be that of the Ford automobile plant. The employees have organized a band and an efficiency club, through which they expect to participate in the prize distributions.

Following will be the formation of the parade:

First division will form on Salmon street, facing west, head resting on Fourteenth street.

Second division will form on Main street, facing west, head resting on Fourteenth street.

Third division will form on Jefferson street, facing west, head resting on Fourteenth street.

Fourth division will form on Jefferson street, facing east, head resting on Fourteenth street.

Fifth division will form on Columbia, facing west, head resting on Fourteenth street.

Sixth division will form on Columbia, facing east, head resting on Fourteenth street.

Seventh division will form on Clay facing west, head resting on Fourteenth street.

**DETAILED ROSE FESTIVAL PROGRAMME FOR TODAY.**

Today being a proclaimed legal holiday, the following programme will be carried out:

8:30 to 9:30 A. M.—Festival Center, concert; Brown's Band.

9 to 10 A. M.—Concert, Broadway and Yamhill; Campbell's American Band.

9 to 10 A. M.—Concert, Sixth and Oak; Perrydale Band.

9 to 10 A. M.—Concert, First and Alder; Portland Ladies' Band.

9 to 10 A. M.—Concert, East Sixth and East Alder; McElroy's Band.

9:30 A. M.—Festival Center, Jefferson High School Girls' Glee Club.

William H. Boyer, director; varied programme.

10:30 A. M.—Fraternal, industrial, civic, commercial and military parade, headed by James Withycombe, Governor of Oregon; George L. Baker, director of above participation; Adjutant-General White, grand marshal.

Route of parade—Form on Fourteenth street south of Salmon, Fourteenth to Morrison, Morrison to Tenth, Tenth to Alder, Alder to Broadway, Broadway to Taylor, Taylor to West Park, West Park to Jefferson, Jefferson to Park, Park to Salmon, Salmon to Sixth, Sixth to Morrison, Morrison to Fourth, Fourth to Taylor, Taylor to Third, Third to Pine, Pine to Fourth, Fourth to Alder, Alder to Sixth, Sixth to Washington, Washington to Fifth, Fifth to Pine, Pine to Broadway, Broadway to Washington, Washington to Tenth, Tenth to Stark and Thirteenth and disband.

12 noon—At principal hotels, Ad Club Male Quartet.

1 P. M.—Judging floral exhibits at Festival Center.

1:30 P. M.—Sixth and Oak, Beaverton Choral Club, T. W. Zimmerman, director; choral selections.

1:30 P. M.—East Sixth and East Alder, Lotus Girls' Glee Club, J. A. Finley, conductor; songs and specialties.

2 to 3 P. M.—Reception to Governor Withycombe and the queen and her court on board U. S. Boston.

2 P. M.—Pacific Northwest amateur championship track and field meet on Multnomah Field, under the auspices of the Multnomah Amateur Athletic Club and the Rose Festival Association; Charles F. Berg, director of athletics.

2:30 P. M.—Festival Center, Harmony Choral Club and Sellwood Choral Club combined, Ella Hoberg Tripp, conductor; Eva Benson, accompanist; choruses and specialties.

3 P. M.—Five-mile Marathon through the streets of the city; finish on Multnomah Field.

Route of Marathon—Start at Multnomah Field, to Salmon, Salmon to Chapman, Chapman to Taylor, Taylor to West Park, West Park to Jackson, Jackson to Fifth, Fifth to Caruthers, Caruthers to Second, Second to Hall, Hall to West Park, West Park to Taylor, Taylor to Chapman, Chapman to Salmon, Salmon to Multnomah Field.

3 to 4 P. M.—U. S. S. Boston open to public.

3:30 P. M.—Festival Center, G. A. R. Veterans' Quartet and Chorus; interspersed numbers by Campbell's American Band.

3 to 4 P. M.—Concert, Broadway and Yamhill; Perrydale Band.

3 to 4 P. M.—Concert, East Sixth and East Alder; McElroy's Band.

3 to 4 P. M.—Concert, First and Alder; Brown's Band.

3 to 4 P. M.—Concert, East Sixth and East Alder; McElroy's Band.

3:30 P. M.—Festival Center, Amphion Male Chorus, Jasper Dean MacFall, director; choral concert.

6 P. M.—At principal hotels, Ad Club Male Quartet.

6 to 8 P. M.—Portland Hotel court veranda, orchestra interspersed with vocal selections by Mrs. Edward Adams, Beaverton.

6:30 to 7:30 P. M.—Festival Center, concert; Brown's Band.

6:30 to 7:30 P. M.—Concert, Broadway and Yamhill; Campbell's American Band.

7 to 8:30 P. M.—Sixth and Oak, concert; McElroy's Band.

7 to 8:30 P. M.—First and Alder, concert; Portland Ladies' Band.

7:30 to 8:30 P. M.—Festival Center, Portland Oratorical Society, Joseph A. Finley, conductor; concert selections.

7:30 P. M.—Broadway and Yamhill, St. James' English Lutheran Choir, Mrs. J. Harvey Johnson, director, assisted by Miss Gertrude Hoebler and Miss Gail Meyers, violinists; Mrs. W. N. Livingston, cornet; Miss Pauline Robinson and Roy Hoberger, accompanist.

—Hall to the Beautiful Morning in May, "Sweetheart, Sigh No More," "The Mice in Council," "A Twilight Revel," cornet solo, selected; "Bridal Chorus," "Rose Maiden," "Gypsy Life," "O Hush Thee, My Baby," "Sanctus."

7 to 8:30 P. M.—Concerts by Perrydale Band at the principal hotels.

7:30 P. M.—At the Public Library, Dr. Clement B. Shaw in a scenic and dramatic presentation of the "Nibelungen Ring," by Richard Wagner.

9 P. M.—Grand electrical pageant under supervision of F. W. Hill, director of transportation and electrical parade. This will also feature the parade of the Portland Jovian League and the electrical men of the city in a series of electrical surprises, spectacular features and floats symbolizing the pursuits of the Jovians. This will be in addition to the electrical float depicting the resources of the state in an array of wonderful and dazzling creations.

Route of parade—Start Washington at Twenty-third, to Nineteenth, Nineteenth to Morrison, Morrison to Third, Third to Glisan, Glisan to Fifth, Fifth to Washington, Washington to Twenty-third.

9:30 to 11:30 P. M.—Tribal ceremonies and dancing by Blackfoot Indians from Glacier National Park.

10 to 11 P. M.—Concert, Broadway and Yamhill; Perrydale Band.

10 to 11 P. M.—Concerts at all principal hotels; Campbell's American Band.

10 to 11 P. M.—Street dancing on Park, Columbia and West Park, under direction of Professor Mose Christensen; Brown's and McElroy's bands.

Eighth division will form on Clay, facing east, head resting on Fourteenth street.

Ninth division will form on Market, facing west, head resting on Fourteenth street.

Tenth division will form on Market, facing east, head resting on Fourteenth street.

Eleventh division will form on Montgomery, facing west, head resting on Fourteenth street.

Twelfth division will form on Montgomery, facing east, head resting on Fourteenth street.

### NAVAL OFFICERS GUESTS

Chamber of Commerce Host to Admiral and Others of South Dakota.

Officers of the cruiser South Dakota were guests at luncheon yesterday at the Chamber of Commerce. C. C. Colt, president of the Chamber, presided. Welcome to the men who direct the lighting ship were given and suitable responses made. The naval uniforms lent a touch of smartness to the affair, while the best of camaraderie prevailed.

Guests of honor from the South Dakota were: Rear-Admiral Charles F. Pond, commander-in-chief; Lieutenant John H. Blackburn, aid; Lieutenant-Commander Charles M. Tozer, Lieutenant James J. Manning, Ensign Raymond E. Keiser, Surgeon Clarence P. Ely, Paymaster John H. Hornberger, Boatswain James Roberts, Chief Gunner James H. Bell, Chief Gunner William O. King, Chief Machinist Francis G. Randall, Machinist Frederick R. Kalde, Carpenter Frank Welch, Paymaster's Clerk Alexander C. Kozlowski.

The officers were taken to the grandstand, where they viewed the parade, and later in the afternoon the office staff of the Chamber of Commerce, carrying great bouquets of roses, returned the call to the cruiser and decorated the officers' quarters with the fragrant flowers.

### 4 CRUISERS TO GO TO FAIR

South Dakota Among Others Ordered to San Francisco.

SEATTLE, June 10.—Four cruisers of the Pacific reserve fleet will leave Seattle for San Francisco.

## THE INDIANS YOU WILL SEE IN TODAY'S PARADE

are from

## GLACIER NATIONAL PARK

MONTANA

On Main Line of



The BLACKFEET still retain most of their primitive customs and manner of living. Tourists are afforded an excellent opportunity to observe their rites and ceremonies. Their history and legends are perpetuated in the names of many of the mountains, lakes and glaciers of GLACIER NATIONAL PARK.

Tours \$1.00 to \$5.00 Per Day  
Afoot, Horseback, Auto or Launch

New \$500,000.00 Hotels at Glacier Park Station and many Glacier (on Lake McDermott) Swiss Chalet Colonies and Teepee Camps at twelve other beautiful sites.

Plan to Visit This Wonderful, Scenic Region This Summer. Advise Your Eastern Friends Not to Miss It.

For beautiful descriptive literature call on or address

H. Dickson, City Passenger and Ticket Agent  
348 Washington Street (New Morgan Bldg.)  
Telephones: Marshall 3071, A 2286

# Great Sacrifice Sale

Of the World's Renowned

## Hart Schaffner & Marx

Spring and Summer Weight Suits  
For the Conservative and Extreme Dressers

# At 1/4 Off Regular Prices

Make your selections from these genuine reductions:

All \$20 Suits \$15.00      All \$30 Suits \$22.50  
All \$25 Suits \$18.75      All \$35 Suits \$26.25

## SPECIALS IN FURNISHING GOODS

Soft Shirts, with silk front and silk cuffs, a large range of beautiful patterns to select from; special... **\$1.35**

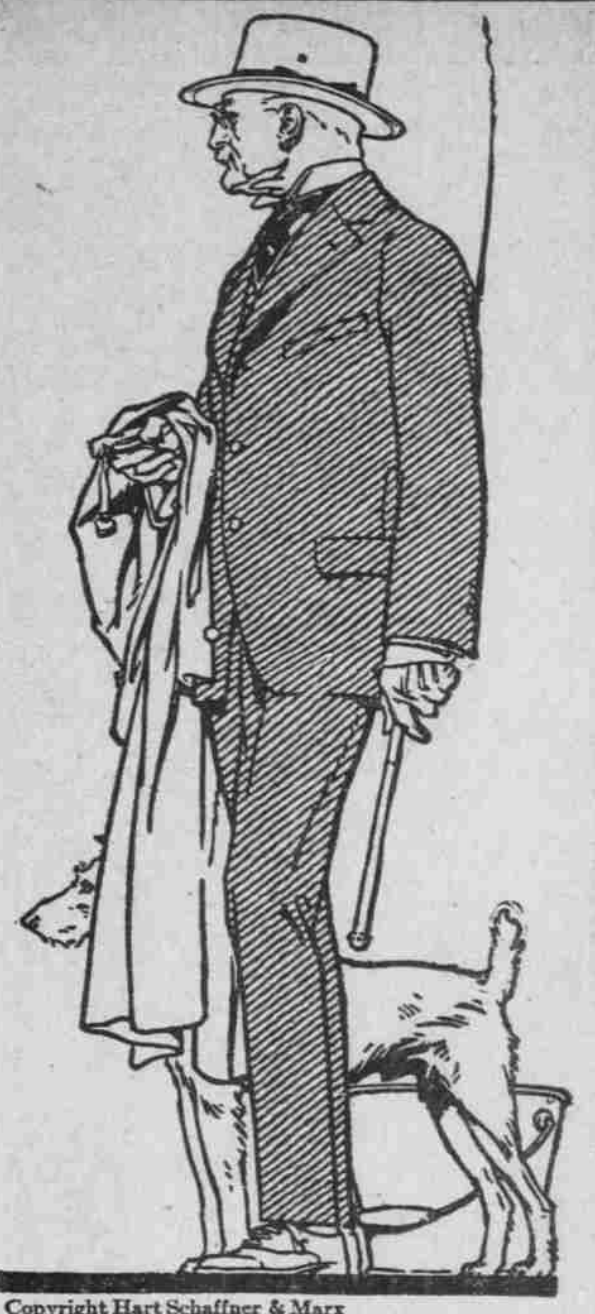
150 Silk Lisle Underwear, white and tan; \$1.75 suit, or special, per gar **90c**

\$1.50 Shirts, soft and stiff cuffs; some with collars to match; all sizes, all good patterns; special **95c**

One big lot of 50c Neckwear, all good, conservative patterns; new designs **25c** this Spring; at, each

# Sam'l Rosenblatt & Co.

The Men's Store for Quality and Service      Exclusive Agents of HART SCHAFFNER & MARX CLOTHES      Northwest Corner Third and Morrison St.



Copyright Hart Schaffner & Marx

the Puget Sound Navy-yard between July 1 and 3 to remain until the close of the Panama-Pacific Exposition, according to unofficial information received at the yard. The ships ready to go are the South Dakota, flagship of Rear-Admiral Pond; the Pittsburg, Milwaukee and Albany, the latter carrying the Washington naval militia.

The Charleston and West Virginia are undergoing repairs and cannot go south until later.

### Sheep in Mountains Mothers Deer.

PENDLETON, Or., June 10.—(Special.)—In going among his sheep in the mountains south of town yesterday Frank Pedro discovered a fawn being mothered by the sheep. He plans to raise the deer and present it to the Pendleton Roundup Association.

### J. P. Dufour Among French Injured.

PENDLETON, Or., June 10.—(Special.)—Word has been received here of the wounding by shrapnel from German guns of J. P. Dufour, well-known wool buyer for the French Worsted Company, who for a number of years has attended the Eastern Oregon wool

sales. Mr. Dufour, a native of France, returned to that country soon after hostilities began.

### J. B. Wallis is Honored

Son of ex-Idaho Official Editor of Law School Journal.

BOISE, Idaho, June 10.—(Special.)—Friends in Southern Idaho of James B. Wallis, son of James H. Wallis, ex-Pure Food Commissioner of this state,

have learned of honors he has received in Georgetown University, Washington, D. C. from which he will be graduated this month with the degree of bachelor of law.

Mr. Wallis was editor-in-chief of the senior class publication, "The Domesday Book," dedicated this year to Chief Justice White, of the Supreme Court of the United States. Credit is given to Mr. Wallis for its attractive appearance.

### The Only Animals Left Alive in the Army

200 are the elephants, which are being used for military traction purposes.

## "The Whole World Knows the Portland Rose" and the

# Portland Rose Festival

### MUSIC, SINGING, DANCING AND A SEASON OF JOY

## PROGRAMME

### FRIDAY, JUNE 11.

- 10:30 A. M.—Industrial, Civic, Commercial and Military Parade.
- 2:00 P. M.—Track and Field Meet, Pacific Northwest Amateur Championship.
- U. S. S. Boston open to visitors.
- U. S. S. Battleship South Dakota in Portland Harbor.
- 9:00 P. M.—Grand Electric Parade.
- 10 to 11 P. M. Street Dancing.

## Special Trains Corvallis, Albany, Salem, McMinnville, Forest Grove, Hillsboro

That all may have an opportunity to visit the morning and evening parades and return to their homes same night, special trains will be run as follows:

### TONIGHT, FRIDAY, JUNE 11

FROM McMINNVILLE Via "East Side"	FROM FOREST GROVE Via "West Side"	REGULAR TRAIN TO McMINNVILLE	SPECIAL TO CORVALLIS
Special.	Special.	Regular Train	
5:20 P. M. Lv. McMinnville Ar. 12:35 A. M.	8:05 A. M. Lv. Forest Grove Ar. 12:35 A. M.	Lv. Portland U. D. 11:00 P. M.	Lv. Portland U. D. 11:00 P. M.
5:31 P. M. Lafayette 12:21 A. M.	8:10 A. M. Cornelius 12:25 A. M.	East Morrison 11:10 P. M.	East Morrison 11:10 P. M.
5:35 P. M. Dayton 12:15 A. M.	8:22 A. M. Hillsboro 12:15 A. M.	Oregon City 11:40 P. M.	Oregon City 11:40 P. M.
5:45 P. M. Dundee 12:03 A. M.	8:32 A. M. Reedville 12:01 A. M.	Canby 11:55 P. M.	Canby 11:55 P. M.
5:52 P. M. Newberg 12:03 A. M.	8:35 A. M. Huber 12:01 A. M.	Woodburn 12:25 A. M.	Woodburn 12:25 A. M.
6:11 P. M. Middleton 11:47 P. M.	8:37 A. M. St. Mary's 11:56 P. M.	Salem 12:55 A. M.	Salem 12:55 A. M.
6:15 P. M. Sherwood 11:44 P. M.	8:40 A. M. Beaverton 11:52 P. M.	Lv. Salem 12:55 A. M.	Lv. Salem 12:55 A. M.
6:23 P. M. Tualatin 11:33 P. M.	8:40 A. M. Beaverton 11:52 P. M.	Ar. Dallas 2:00 A. M.	Ar. Dallas 2:00 A. M.
6:32 P. M. Lake Grove 11:26 P. M.	8:47 A. M. Shattuck 11:43 P. M.	Jefferson 1:42 A. M.	Jefferson 1:42 A. M.
6:39 P. M. Oswego 11:20 P. M.	8:55 A. M. Bertha 11:39 P. M.	Ar. Albany 1:40 A. M.	Ar. Albany 1:40 A. M.
7:03 P. M. Ar. Portland Lv. 10:45 P. M.	9:15 A. M. Ar. Portland Lv. 11:15 P. M.	Ar. Corvallis 2:10 A. M.	Ar. Corvallis 2:10 A. M.

### ACCOUNT PARADES, CERTAIN REGULAR TRAINS WILL START FROM 4TH AND TAYLOR STREETS AS FOLLOWS:

Train 311 for Oswego leaves 4th and Taylor 10:23 A. M.	Train 111 for Forest Grove leaves 4th and Taylor 11:08 A. M.
Train 313 for Oswego leaves 4th and Taylor 12:18 P. M.	Train 113 for Forest Grove leaves 4th and Taylor 2:23 P. M.
Train 359 for Newberg leaves 4th and Taylor 12:53 P. M.	Train 325 for Oswego leaves 4th and Taylor 8:03 P. M.
Train 315 for Oswego leaves 4th and Taylor 1:59 P. M.	Train 327 for Cook leaves 4th and Taylor 9:53 P. M.

Immediately after the Electrical Parade Special Trains for all points on the "East" and "West" Side Electric Loop, Portland to McMinnville, will be lined up on Fourth St., and will leave as rapidly as they can be loaded, so that all people can return to their homes without delay.

## Special Round-Trip Fares

From Albany \$3.10	Hillsboro .80	Forest Grove \$1.00
Chemawa \$1.80	Harrisburg \$4.15	Liberal \$1.10
Corvallis \$3.50	Eugene \$4.80	Mt. Angel \$1.50
Molalla \$1.20	Junction City \$4.30	Salem \$2.00

Corresponding low fares from all other stations, main line and branches. For further particulars call at City Ticket Office, 80-Sixth Street, corner Oak; Fourth and Yamhill, Jefferson Street Depot or from any agent of the

# SOUTHERN PACIFIC

John M. Scott, General Passenger Agent, Portland, Oregon