

GARLANDS CROWD OUT FESTIVAL EVE

Joy Pervades Light-Hearted Throgs Lured to Street by Myriad of Bulbs.

BUILDINGS ARE DECORATED

Constant Stream of Autos Passes Along Broadway and Walks Leading to Park Blocks Jammed With Happy Humanity.

The "Festival spirit" got into Portland away ahead of the official beginning of the Rose Festival, and if you stayed at home last night instead of coming down town to witness the evening of fun, which was thrown in impromptu, just to whet up the popular appetite for the big show that will be on today.

Broadway from Stark street to Main, which is the official approach to the Festival Center, was congested with thousands and thousands of persons pouring in steady streams along the sidewalks, while the middle of the street was filled by a continuous procession of automobiles.

The air fairly trembled with the purr of thousands of machines, and the stream seemed to flow on endlessly, hour after hour, with no apparent diminution.

Light Canopy Spans Street. The great electric curtain, blazing in three colors, draped across Broadway at Stark street, marked the entrance into the avenue of lights that led to the Festival Center.

In addition to the chain of lights, the central globe in each of the cluster lights along the curbs was changed to a "skiddoo light" that varied color continuously like a huge iridescent soap-bubble.

Buildings Ablaze With Color. Portland Hotel, edged with red and red lights, and the Electric building were other cores of color in the decoration scheme.

Broadway was not alone a light center in the city. Third street, representative of the fact that it is to be a part of most of the parade routes, had all the new arches decked out and blazing with incandescent lights.

Festival Center Is Fairytland. Passing up Broadway to Main, one turned west to the Festival Center. For a block the great trees on either side form an arch of green across the street, through which the incandescent bulbs twinkled like fireflies.

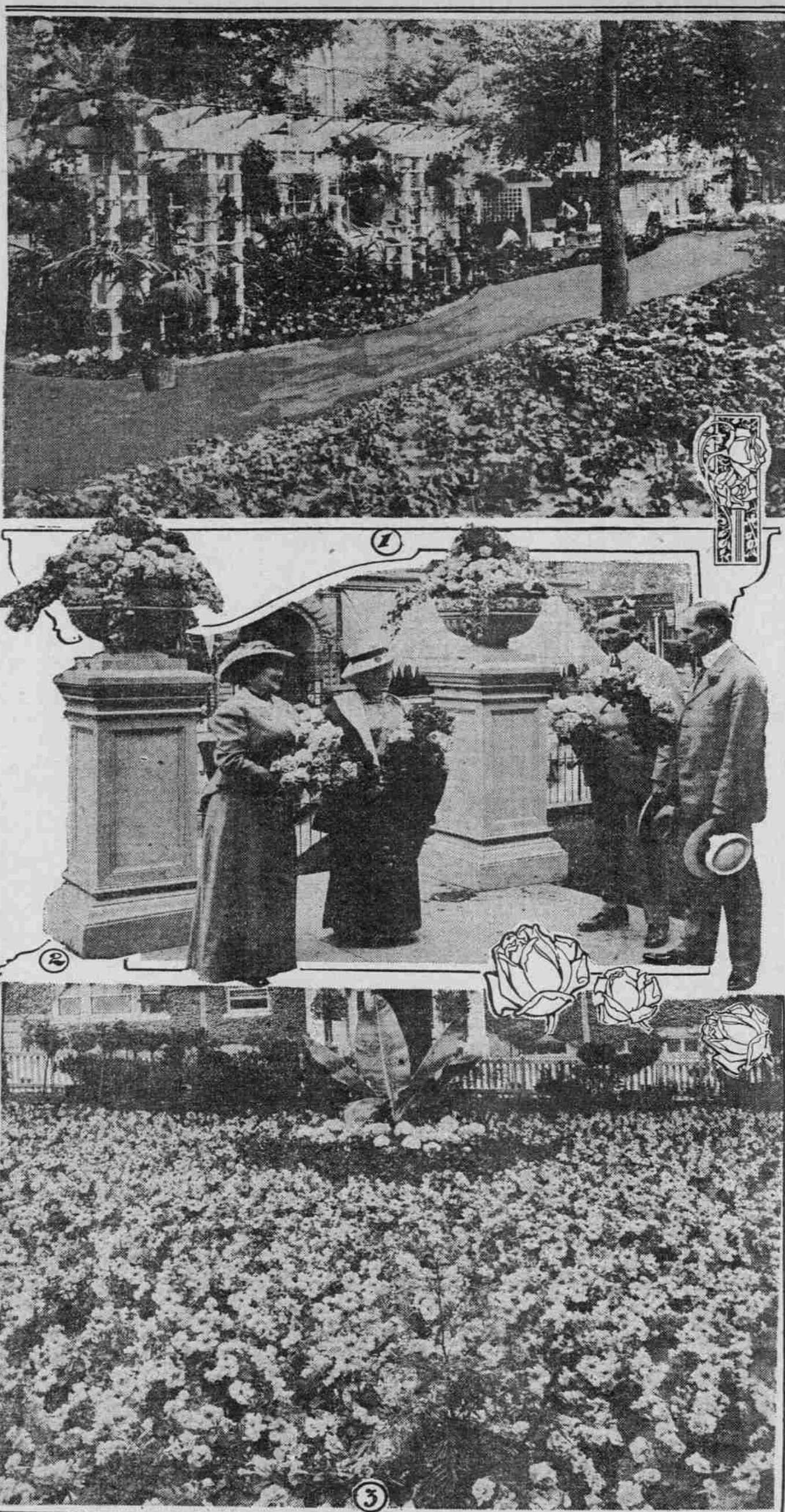
Here the florists of the city were putting the finishing touches upon the parade flower gardens which they have created since Monday night.

Flowers of Varied Colors Shown. Pink hydrangeas massed in another, surrounded by stately maroon leaves of the King of Hearts.

Crowds Stream by Till Late. F. A. Van Kirk, president of the Florists' Society, and Julius Dosche, manager of the gardens at the Festival Center, were superintending the touches, which consisted of the creation of a 50-foot rose garden in the street between the two blocks.

REST ROOMS ARRANGED. Congress of Mothers to Help Make Festival Visitors Comfortable. Realizing that sufficient rest rooms for the visitors to the Rose Festival will go a long way in making them comfortable, the Oregon Congress of Mothers yesterday announced that rest rooms would be maintained at the headquarters of the Congress, room 451 Courthouse, and at Ladd School.

DECORATIONS WHICH ARE AMONG FEATURES IN ROSE FESTIVAL ATTRACTIONS.



1—Perkins for Rose Exhibits in Festival Center. 2—Urns of Roses in Front of Postoffice. Left to Right, Mrs. W. V. Foster, Mrs. Viola May Coe, Emery Olmstead and F. S. Myers, Taken at Ceremony Turning Over Urns to City Yesterday. 3—A Petunia Bed in the Festival Center.

Hopkins, Mrs. J. M. Olson and Mrs. C. B. Douglas. FLORENCE VOTES \$13,000 BONDS. FLORENCE, Or., June 8.—(Special.)—Monday's special election of bond issues of \$3000 for street intersections and \$10,000 for a water system carried. The issues for the city hall and jail were defeated.

HEALTH CODE IS DRAFTED. Dr. Marcellus to Offer Complete New Measure to Council. A complete new health code, combining into one condensed ordinance all the city's present health laws, has been prepared by City Health Officer Marcellus and will be submitted to the City Council at its regular meeting this morning.

COMPLETE PROGRAMME FOR THE ROSE FESTIVAL TODAY. A SUNRISE salute will boom from the guns of the cruiser Boston at sunrise and usher in the commencement of Portland's eleventh annual Rose Festival.

PROGRAMME FOR TODAY. 8:30 to 9:30 A. M.—Concert, Broadway and Yamhill street, Campbell's American Band. 9:30 to 9:50 A. M.—Concert, Sixth and Alder streets, Brown's Band. 9:50 to 10:10 A. M.—Concert, East Sixth and Alder streets, Campbell's American Band. 10:10 to 10:30 A. M.—Concert, East Sixth and Alder streets, Perrydale Band. 10:30 to 11:00 A. M.—At principal hotels, Ad Club Male Quartet. 11:00 to 11:30 A. M.—Cruiser Boston open to general public. 11:30 to 12:00 P. M.—Opening of Festival Center under direction of John F. Carroll, director of Festival Center. The Queen and her retinue, in charge of Robert Krohn, grand marshal. Bands of parade, north on Grand avenue from East Madison street to Holladay avenue. 12:00 to 1:00 P. M.—All bands in service at Human Rosebud Parade. 1:00 to 1:30 P. M.—At principal hotels, Ad Club Male Quartet. 1:30 to 2:00 P. M.—Judging floral exhibits at Festival Center. 2:00 to 3:00 P. M.—Cruiser Boston open to general public. 3:00 to 4:00 P. M.—Opening of Festival Center under direction of John F. Carroll, director of Festival Center. The Queen and her retinue, in charge of Robert Krohn, grand marshal. Bands of parade, north on Grand avenue from East Madison street to Holladay avenue. 4:00 to 5:00 P. M.—All bands in service at Human Rosebud Parade. 5:00 to 5:30 P. M.—At principal hotels, Ad Club Male Quartet. 5:30 to 6:00 P. M.—Judging floral exhibits at Festival Center. 6:00 to 7:00 P. M.—Cruiser Boston open to general public. 7:00 to 8:00 P. M.—Opening of Festival Center under direction of John F. Carroll, director of Festival Center. The Queen and her retinue, in charge of Robert Krohn, grand marshal. Bands of parade, north on Grand avenue from East Madison street to Holladay avenue. 8:00 to 9:00 P. M.—All bands in service at Human Rosebud Parade. 9:00 to 9:30 P. M.—At principal hotels, Ad Club Male Quartet. 9:30 to 10:00 P. M.—Judging floral exhibits at Festival Center. 10:00 to 11:00 P. M.—Cruiser Boston open to general public. 11:00 to 11:30 P. M.—Opening of Festival Center under direction of John F. Carroll, director of Festival Center. The Queen and her retinue, in charge of Robert Krohn, grand marshal. Bands of parade, north on Grand avenue from East Madison street to Holladay avenue. 11:30 to 12:00 P. M.—All bands in service at Human Rosebud Parade.

GREAT THROUG OF VISITORS EXPECTED

Preparations Being Made for Record Attendance at This Year's Festival.

MANY TOURISTS ARRIVING

Special Train Provision Arranged by all Lines Entering Portland. Organizations From Seattle and Elsewhere Will Come.

Rose Festival attendance will go up a few notches this year, according to the railroad and the steamship estimates, and they are making preparations to accommodate the increasing throngs.

As in former years the great body of people that come to the Festival will be recruited from the close-in radius—within 50 miles of Portland. The Festival never has attracted great parties of Eastern people, and the Festival managers don't hold to the illusion that it does.

A special train will come in over the Southern Pacific on Friday morning bringing members of the Oregon National Guard from Corvallis, Salem, Dallas and Woodburn. The contingent will participate in the big industrial, fraternal, civic and military parades.

Electric Lines to Run Specials. The railroads figure they can handle the traffic on their regular trains by carrying extra equipment. The suburban electric lines are preparing, however, to place special trains into commission to handle the people to and from the big parades.

Another special will come over the Southern Pacific from Salem to handle the Cherrians. It will leave Salem at 8 o'clock, arriving here at 9 o'clock. Rosarians will meet this delegation, too.

The Oregon City Marching Club will come on the electric line of the Portland Railway, Light & Power Company. Seattle Delegates to Come. The Tillamucks, of Seattle, are due to leave that city on a special train over the W. & N. line at midnight tonight.

Night Trains Promised. On Friday evening, after the electric parade, the Southern Pacific will run a steam train to Corvallis, leaving the Union Depot at 11 P. M., stopping at all intermediate points and making connection at Salem for Corvallis and arriving at Corvallis at 2:10 A. M.

After the electric parade on Friday night the Southern Pacific will have 50 electric cars on its line on Fourth street to accommodate passengers going to McMinnville and intermediate points, via either the Oswego-Newberg route or via the Hillsboro-Forest Grove route.

The Oregon Electric has arranged to operate its regular train over Second and intermediate points instead of from Hoyt-street station, at those periods when parades are in progress. The parades will block the Hoyt-street route.

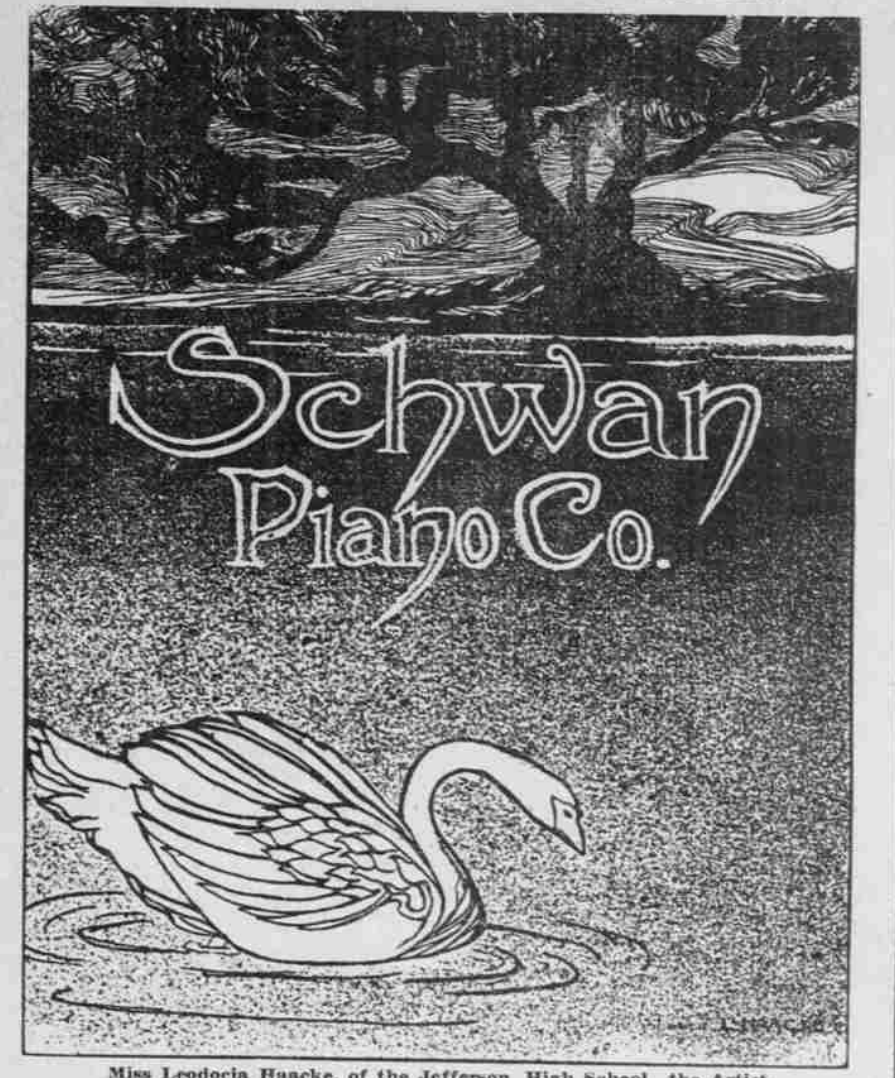
A special train will leave the Jefferson-street station of the Oregon Electric at 10:50 each evening for Garden Home and intermediate points; another special will leave the same station each evening at 11:10 for Forest Grove and intermediate points, and another special will leave at 11:15 for Woodburn and intermediate points south of Garden Home.

The regular train will leave at midnight from Ruby Junction, Fairview, Troutdale and all intermediate points, at 11:40. To accommodate Festival visitors living along the line of the Willamette Valley Southern System, a special train will leave Oregon City for all points on that line at midnight. The Oregon City train leaving Portland at 11:45 will connect at the Fourteenth-street Station in Oregon City with the Willamette Valley Southern special.

CARS TO RUN LATE FRIDAY. Special Electric Trains Arranged for Last Night of Festival. For the benefit of the residents of the interurban districts reached by the Portland Railway, Light & Power Company, the company will give an additional special train on Friday night following the closing of the Rose Festival activities.

Special Electric Trains Arranged for Last Night of Festival. A special train will leave First and Alder streets at 11:35 for Linnemann Junction, Ruby Junction, Gresham, Pleasant Home, Cottrell, Bull Run, Egan, Crook, Clatsop, Escalante and Casadero and all intermediate points. Another special train will leave the

Winner of the First Prize THE \$400 THOMPSON PIANO IN OUR CONTEST FOR IDEAS.



Mrs. Leodora Haacke, of the Jefferson High School, the Artist. PORTLAND'S NEW PIANO STORE'S POLICY AND PIANO SERVICE. We take you behind the mercantile scenes to tell you that a great sale—a great volume of sales—can be managed and maintained on a much smaller percentage of profit—when the grades of pianos direct from the distributors to the buyer are merchandised on a correct—on an equally low percentage of profit—by advertising small margin will compensate, particularly since our overhead expenses remain the same, and owing to contingencies of the times—our reduced rents—reduced overhead expenses—are now about one-half of the usual selling expenses elsewhere. We thus produce the following great saving to piano purchasers: ON EASIEST OF EASY TERMS, 8% CASH—3% MONTHLY.

Table with columns: Usual Price, Brand Name, No Interest, Saving to You, Total Price to You, Total Cost to You, Our Factory Price. Lists various piano models and their prices.

Open Evenings. Retail Sale. Manufacturers' Cost Distributors. Schwan Piano Co. Wholesale and Retail. 111 Washington St. Near Washington St. THE STORE THAT CHARGES NO INTEREST.

Isaac Adler, 73, Dies Suddenly. Isaac Adler, 73 years old, died last night at 9:30 o'clock from sudden heart affliction at the home of his daughter, Mrs. L. Rubenstein, 928 East Couch street. Mr. Adler had been a resident of Portland for 24 years, having come here from Odessa, Russia. Two sons, Joseph Adler, of Portland, and H. Adler, of Seattle, and two daughters, Mrs. S. Chaimov, 606 Fifth street, Portland, and Mrs. Rubenstein, 1111 1/2 Couch street, were present at the funeral. The funeral probably will be held today from the residence of Mrs. Chaimov, to which the body will be removed early today.

Advertisement for 'A Festival Thirst-Chaser' featuring 'Coke' (Coca-Cola). Includes text: 'A Festival Thirst-Chaser', 'Coke', 'FIRST FOR THIRST', '5c at all fountains'. Also includes a small illustration of people drinking and a note about ordering in bottles.