

FREIGHT NOW GOES TO SEA DIRECT

Through Rates on Commodities Announced by American-Hawaiian Company.

PENNSYLVANIAN IN HARBOR

Liner, After Leaving Balboa, Has Considerable Cargo Stowed Away Undamaged—Ship Is Worked at \$1 an Hour.

Freight can now be shipped from Portland to Havana on direct bills of lading through the medium of the American-Hawaiian Company...

The Wand Line, operating between New York and Havana, with two or three vessels leaving each week...

In the past there have been shipments from this port to Cuba, and since steamship service between the West Indies and Europe has been disrupted...

The liner Pennsylvanian, of the American-Hawaiian flag, which was fired after leaving Balboa, arrived in the harbor early yesterday morning...

Longshoremen worked the ship yesterday and officials of the company are being paid \$1 an hour straight time...

Longshoremen worked the ship yesterday and officials of the company are being paid \$1 an hour straight time...

MULTNOMAH IS ON SCHEDULE

Klamath to Be Repaired Before Loading Hawaiian Cargo Here.

An official information reached here yesterday that the Klamath is to be repaired before loading Hawaiian cargo here...

FIRE DUE TO BROKEN PIPE

Federal Inspectors Delve Into Details of Mackinaw's Accident.

SAN FRANCISCO, June 1.—Chief Engineer E. J. French, of the steamer Mackinaw, today reported to the United States inspectors that the breaking of an oil feed pipe in the engine-room of the vessel last Friday night caused the fire which nearly resulted in the loss of the ship off the Golden Gate...

THREE TRAMPS CHARTERED

Steamers Get 80 Shillings for October Loading Here.

Two steamers engaged a week ago and another recently to load new-crop wheat here in October, were taken at 80 shillings...

BEAVER BRINGS BAND HOME

Pride of Police Department End California Vacation.

Playing the "Rattlesnake Connecticut March," the Portland Police Band arrived home from the San Francisco Exposition aboard the flagship Beaver...

As concerts were frequent. After leaving San Francisco Sunday the Beaver slowed down while women members of a dance Monday night...

The Bear sailed yesterday morning with 2300 tons of freight and a passenger list numbering 170 persons...

CUSTOM-HOUSE SALE IS SET

Shipment of Champagne From Abroad Included in Wares Offered.

There is to be an "old hags" sale at the Custom-House tomorrow, when a collection of a miscellaneous character is to be offered to the highest bidder...

STETSON FOR GRAYS HARBOR

Nehalem Signs Crew and Is to Be Recommissioned at Once.

There having been a change in programme, the steamer J. B. Stetson, which has been placed in commission after several months of idleness at St. Helens, steamed yesterday for Grays Harbor to load lumber for California...

MAY LUMBER SHIPPING DULL

Fewest Cargoes Are Sent From Lower Columbia Since February.

ASTORIA, Or., June 1.—(Special.)—May was the dulllest month since last February in the history of lumber shipping from the Columbia River...

MARINE INTELLIGENCE

Steamer Schedule.

Table with columns: Name, From, Date, and other details for various steamers.

Marconi Wireless Reports.

(All positions reported at 8 P. M., June 1, unless otherwise designated.)

News from Oregon Ports.

ASTORIA, Or., June 1.—(Special.)—The steamer schooner Daisy arrived today from San Francisco...

Movements of Vessels.

PORTLAND, June 1.—Arrived—Steamers Roseboro, from San Diego, via way ports...



Mountain, River and Beach Resorts

Where To Take a Short Trip Out of Portland

Herewith is a list of short trips in and about Portland. If you are in doubt about any point, or the trip you have heard about is not mentioned here...

COLUMBIA RIVER HIGHWAY.

A scenic drive of rare beauty, built along the south shore of the Columbia River...

White Salmon Valley and Victoria

A wonderfully scenic ride over the North Bank Railroad or by excursion steamer...

Clatsop Beach Resorts

Reached by the S. P. & S. Railroad. A delightful trip to the Pacific Ocean resorts...

Portland Heights (Connell Crest)

—1200 feet above the city. Take Connell Crest car on Washington street...

Rockaway Beach

—Elmore Park, Garibaldi Beach and Tillamook beaches reached by train in a few hours...

Stockyards and Packing Plant

—Located on Columbia Slough. Take 1st cars, second and Washington transfer at Killingsworth street...

Tawney's Mountain Home

—Ideal spot. Hunting, fishing, camping, privileges, saddle horses, home, boat, etc. Rates \$10 per week...

Reliance

—Daily to Mt. Hood resorts. Round trip, \$5; Gov. Camp, \$7.50; Reservations, tickets and information at ROUTE 2 SEED & FLORAL CO.

Marine Notes.

Steve McDonald, who was superintendent of the Columbia River and Astoria Navigation Company until his sale recently by the Spokane, Portland & Seattle Railroad to D. O'Reilly, assumed charge of Alder street yesterday...

THE ORIGINAL Malted Milk

The Food-Drink for all Ages. Rich milk, malted grain, in powder form. For infants, invalids and growing children...



WELCH'S HOTEL

WELCH'S HOTEL. Oldest resort in the Mount Hood district. Good water, airy bungalows, excellent cuisine...

HOTEL MORTONIA

Hotel Mortonia. The ideal hotel for you to stay at while in Portland.

For SIGHTSEEING or OUTING TRIPS Around Portland

Call First and Alder or Traffic Manager. Marshall 5100, A 6131. P. R. L. & P. Co.

The Oaks

Portland's Greatest Amusement Park. 50 Acres of Roses. TODAY'S PROGRAMME. 2:30 P. M. Orchestra Concerts and Prima Donna Boston Troubadour in musical play...

SOL DUC HOT SPRINGS AND SANATORIUM

the greatest health and pleasure resort on the Pacific Coast, in the heart of the Olympic Mountains, open for the season. For full information address The Manager, Sol Duc, Wash.

THE EYRE

On the Bluffs of the Columbia River the charming Eyre Hotel, among the Cascades, opens June 1st. Conducted along the most inviting to men and women of rest and recreation...

WEDDERBURN

Wedderburn, the excellent schooner Roamer sailed at 3:30 P. M. for Astoria...

Money Hid in Gas Heater Burned

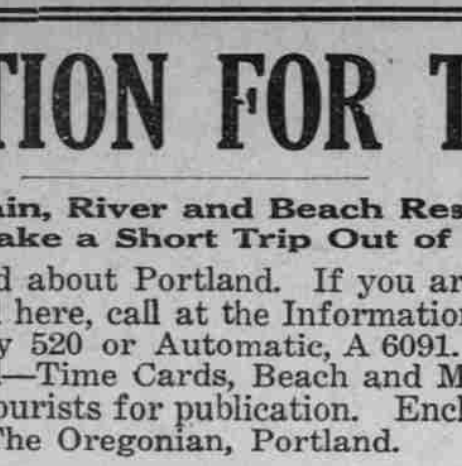
A gas heater proved a poor safe for the valuables of J. O. Houk, grocer, of 528 Union avenue. He left with his family for a motortrip Saturday and...

Streetscar Hits Peanut Wagon

Peanuts were scattered promiscuously on the street yesterday afternoon when St. Johns car No. 167 struck one of the wagons of Closset & Devers on Williams avenue...

Charles Conner's Parole Revoked

Salem, Or., June 1.—(Special.)—Governor Withycombe today revoked the parole of Charles Conner, for alleged violation by passing a fraudulent check. He was committed from Baker County on conviction of larceny.



DO YOU Travel With a Kodak?

Largest Photo Supply and Finishing House on the Coast—10 floors Stationery building devoted to our various lines.

Woodard, Clarke & Co.

Everything for the Trip by Rail, Steamer or Motor at Gill's The J. K. Gill Co., Bookseller, Stationers and Complete Office Outfitters.

CLATSOP BEACH

CLATSOP BEACH RESORTS, GEARHAFT AND SEASIDE, MAY 26. VISITED IN ONE DAY. ROUND TRIP FROM PORTLAND \$2 Week-end ROUND TRIP \$4 Season

WELCH'S HOTEL

WELCH'S HOTEL. Oldest resort in the Mount Hood district. Good water, airy bungalows, excellent cuisine...

That Delightful Beach Home.

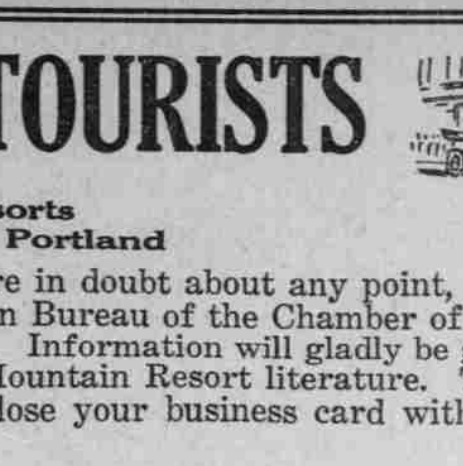
At Elmore Park, European only. Large, comfortable, rooms amidst the lovely surroundings...

THE MOUNT HOOD, Hood River, Or.

THE MOUNT HOOD, Hood River, Or. Especially equipped for Summer guests. Fine overlooking Columbia River and Cascade Mountains...

RHOODOENDRON HOTEL

RHOODOENDRON HOTEL. The finest mountain resort in Oregon. Located on the Columbia River and Cascade Mountains...



DO YOU Travel With a Kodak?

Largest Photo Supply and Finishing House on the Coast—10 floors Stationery building devoted to our various lines.

Woodard, Clarke & Co.

Everything for the Trip by Rail, Steamer or Motor at Gill's The J. K. Gill Co., Bookseller, Stationers and Complete Office Outfitters.

CLATSOP BEACH

CLATSOP BEACH RESORTS, GEARHAFT AND SEASIDE, MAY 26. VISITED IN ONE DAY. ROUND TRIP FROM PORTLAND \$2 Week-end ROUND TRIP \$4 Season

WELCH'S HOTEL

WELCH'S HOTEL. Oldest resort in the Mount Hood district. Good water, airy bungalows, excellent cuisine...

That Delightful Beach Home.

At Elmore Park, European only. Large, comfortable, rooms amidst the lovely surroundings...

THE MOUNT HOOD, Hood River, Or.

THE MOUNT HOOD, Hood River, Or. Especially equipped for Summer guests. Fine overlooking Columbia River and Cascade Mountains...

RHOODOENDRON HOTEL

RHOODOENDRON HOTEL. The finest mountain resort in Oregon. Located on the Columbia River and Cascade Mountains...

Why am I slowing down?

—and then you sit and wonder why—when the wonder is that you have kept the pace so long. For the rush of business with its countless worries falls so heavily on a man's nervous system...



Send for a Free copy of "Nerve Health Regained." If you wish to learn more about Sanatogen before you use it, write for a copy of this booklet, beautifully illustrated and comprising facts and information of the greatest interest...



DO YOU Travel With a Kodak?

Largest Photo Supply and Finishing House on the Coast—10 floors Stationery building devoted to our various lines.

Woodard, Clarke & Co.

Everything for the Trip by Rail, Steamer or Motor at Gill's The J. K. Gill Co., Bookseller, Stationers and Complete Office Outfitters.

CLATSOP BEACH

CLATSOP BEACH RESORTS, GEARHAFT AND SEASIDE, MAY 26. VISITED IN ONE DAY. ROUND TRIP FROM PORTLAND \$2 Week-end ROUND TRIP \$4 Season

WELCH'S HOTEL

WELCH'S HOTEL. Oldest resort in the Mount Hood district. Good water, airy bungalows, excellent cuisine...

That Delightful Beach Home.

At Elmore Park, European only. Large, comfortable, rooms amidst the lovely surroundings...

THE MOUNT HOOD, Hood River, Or.

THE MOUNT HOOD, Hood River, Or. Especially equipped for Summer guests. Fine overlooking Columbia River and Cascade Mountains...

RHOODOENDRON HOTEL

RHOODOENDRON HOTEL. The finest mountain resort in Oregon. Located on the Columbia River and Cascade Mountains...