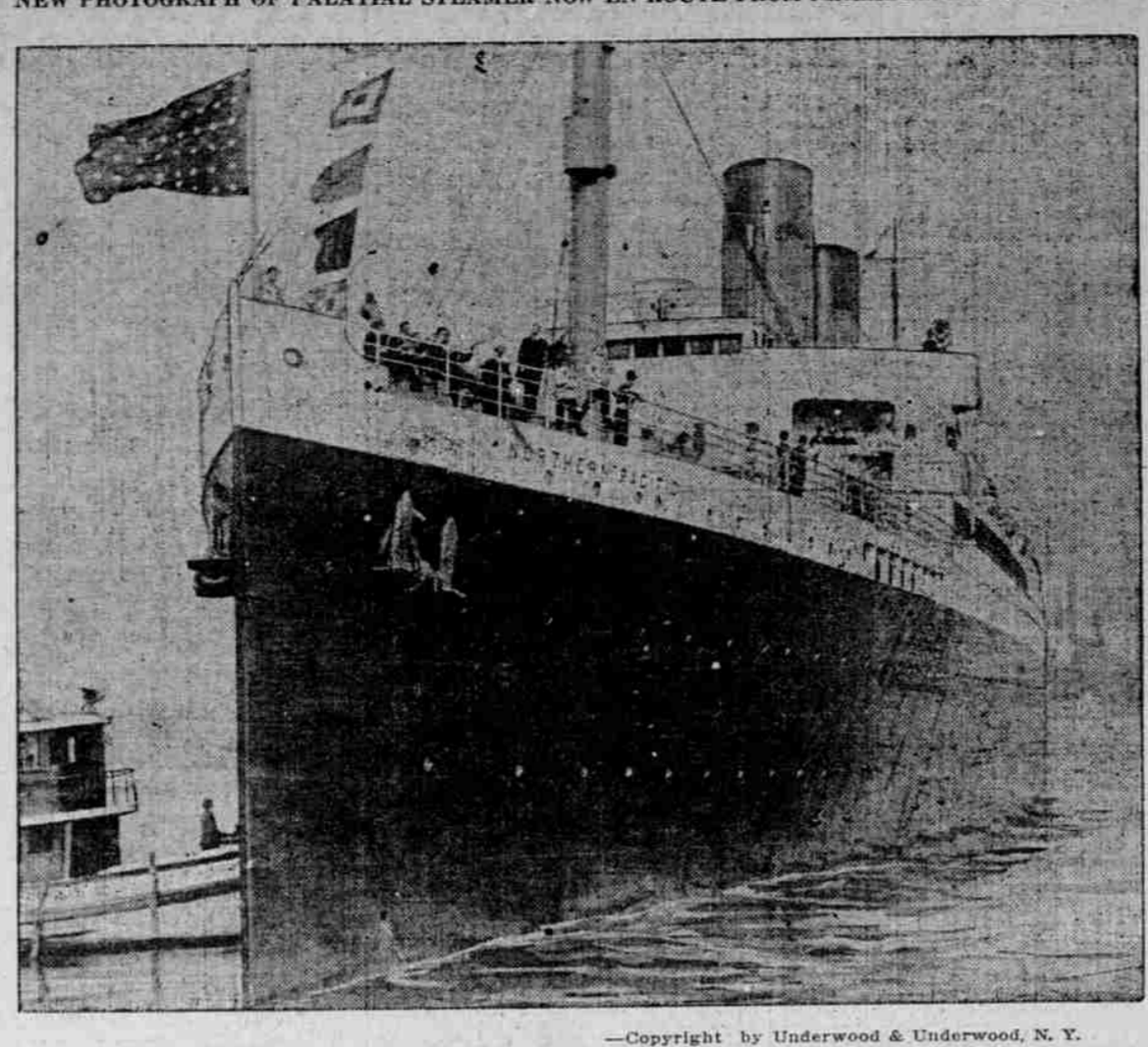


49,532 BUSHELS OF WHEAT GAIN
Portland Exports of Cereal
1,132,492 Bushels Ahead
of Previous Season.

NEW PHOTOGRAPH OF PALATIAL STEAMER NOW EN ROUTE FROM PHILADELPHIA TO FLAVEL.



The Northern Pacific, One of the Most Palatial and Swiftest of Boats Ever Constructed for Coastwise Trade. Began Her Maiden Voyage March 25 From Philadelphia Bound for San Francisco, Via Panama Canal.

Local Port Ships 12,948,332 Bushels of Wheat, Puget Sound Only 8,709,546—Lumber Trade Also Shows Steady Growth.

Not only is Portland 1,132,492 bushels ahead in wheat for nine months of the 1914-15 cereal season, but in March 419,532 bushels more wheat was floated here than was the case in March, 1914. Besides, there is a gain in flour over the corresponding month last year of 23,860 barrels and 544,787 bushels of barley were shipped last month, as against none a year ago.

WALLULA WILL BE LAID UP
Captain Charles Johnson Is Given Skipper's Billet on Tug.

Preparations Made to Extend Dock on Permanent Foundation.

News From Oregon Ports.

ASTORIA, Or., March 31.—(Special).—The Norwegian ship Majanka sailed this afternoon for South Africa with a cargo of grain from Portland.

E. W. WRIGHT NAMED

Merchants' Exchange Manager Is Head of Port.

CHOICE IS UNANIMOUS

Commission Considers His Thorough Knowledge of Marine Affairs, Varied Experience and His Standing With Shippers.

E. W. Wright, manager of the Merchants' Exchange, was yesterday elected general manager of the Port of Portland to succeed the late Marcus Talbot.



E. W. Wright, Who Was Yesterday Elected General Manager of the Port of Portland.

of about 30 cents a ton on wheat was given by the commission yesterday.

TRIBUTARIES IN FETE

CITIES ON EACH RIVER TO SELECT WOMEN FOR CEREMONIES.

Breaking of Bottles of Water Will Mark Dedication of Dalles-Celilo Water Route.

A part of the ceremony of the dedication of the Dalles-Celilo Canal at Big Eddy will be the breaking of bottles of water from every tributary river into the Columbia.

Well-Known Coaster Long Overdue on Way From Sound to Guayquil.

Apparently hope is about abandoned for the schooner Ethel Zane, which has been on the way about 178 days from Bellingham for Guayquil, as leading maritime journals are carrying the name of the ship on the overdue and missing list.

Chehalis Trout to Be Increased.

ABERDEEN, Wash., March 31.—(Special).—In carrying out a policy of increasing the game bird and trout supply of this county, more than \$2000 will be spent during the year.

Marriage brings out latent qualities in a man. Just think how many great story-tellers it has made.

It is just Natural To Admire Babies

Our altruistic nature impels love for the cooling infant. And at the same time the subject of motherhood is ever before us.

WEEPING ECZEMA ON CHILD'S HEAD

Became Inflamed, Hair Came Out, Used Cuticura Soap and Cuticura Ointment. In Less Than Month Eruptions Disappeared and Hair Grew Back.

Sample Each Free by Mail

With 32-p. Skin Book on request. Address post-card "Cuticura, Dept. T, Boston." Sold throughout the world.

CELILLO FETE HONORS GIVEN

Appointed Admiral Tells How He Was First to Run Steamboat to Springfield, 50 Years Ago.

Load of Flour Carried.

EUGENE, Or., March 31.—(Special).—Reminiscences of steamboating on the Willamette, during the past century just half a century ago were told today by Captain E. W. Baughman, recently appointed admiral of the Dalles-Celilo celebration to take the place next month.

Passenger on Early Trip Met.

It's rough through the bottom," he says he thought. "And I ran her to the shore to beach her before she went down."

Marine Notes.

In ballast the steamer Santa Barbara left the harbor yesterday to load lumber on the lower river and sails tomorrow for California ports.

There will be four salmon ships to leave the river for Alaska during the month of April.

Finishing wheat available at Albina dock the brigantine steamer Warrabe shifted last night to the North Bank dock.

While it was intended to load the steamer "Bears" in the river for South Africa, it was reported yesterday that her cargo had been purchased at a Puget Sound mill.

On her second trip this season the steamer Inland Empire leaves Celilo today for Kennewick.

Reservations made for passage on the "Bears," which sails at 9 o'clock tomorrow morning.

Rising eight-tenths of an inch in 24 hours, ending at 8 o'clock yesterday morning, the Willamette stood 5 feet above the level and is expected to continue coming up today.

Abolition of Port Commission Also Is Being Considered.

ABERDEEN, Wash., March 31.—(Special).—Whether docks will be built or not and whether the Port Commission will or will not be abolished are agitating Chehalis County people.

Movements of Vessels.

PORTLAND, March 31.—Arrived.—Steamer W. Herrin, from San Francisco.

Departures.

Mr. Hoff in Pendleton.

PENDLETON, March 31.—(Special).—State Labor Commissioner Hoff was in Pendleton yesterday investigating the application of the minimum wage law and the acts pertaining to laborers in factories.

Mr. Brown was in the kitchen helping Nora, the cook, prepare supper.

It's an old saying," he remarked to Nora, "that 'too many cooks spoil the broth,' what do you think?"

"Sure, ma'am," she replied, "there's nothing to worry about—there's only one cook here."

CERIAL EXPORTS FROM PORTLAND FOR NINE MONTHS OF 1914-15 SEASON.

Table with columns: Cleared, vessel, flag, rig, destination, Bushels, Value, Barrels, Value. Lists monthly export data for various commodities like wheat, barley, and flour.