

NEW LAWS REDUCE COST OF ELECTION

State Will Save More Than \$30,000 in Taking Vote Due to Simpler System.

CHANGES ARE IMPORTANT

Permanent Registration Act Is One of Note Passed by Legislature. Another Bill Designed to Facilitate Voting.

SALEM, Or., March 15.—(Special.)—Important changes in the election laws simplifying the registration and election machinery and making material reductions in the expense were enacted at the recent session of the Legislature. The new law providing for the election of delegates to party National conventions and Presidential Electors will save the state about \$10,000 a year, for, under it, each person so honored must pay his own expenses. House bill 257, introduced by Representative Childs, of Linn County, which provides for two judges of election instead of three, it is estimated, will save the state \$20,000 each election year.

Just what saving the permanent registration law will effect is difficult to estimate, but it should be a material one. This law, while not considered a perfect one, is regarded as a "step in the right direction" to use the pet phrase of State Senator Kellaker, of Portland. It provides that in registering the electors the County Clerks shall use the card index system. The County Clerks shall register any qualified elector who may request to be registered at any time after the first Monday in January, 1915, with 30 days preceding any general or primary election.

As a result electors desiring to vote will have their hands full registering all who apply in that time. An elector living in a county having less than 100,000 inhabitants may register election day by obtaining the affidavits of two freeholders who are personally acquainted with him as to his qualifications. In counties having more than 100,000 inhabitants electors may register election day by obtaining the affidavits of six freeholders as to their qualifications. In the former case the registrations shall be transmitted to the County Clerk and, if found to be in accordance with law, they shall be filed in the register of elections. Such registrations in counties having more than 100,000 inhabitants will not be regarded as permanent. Electors living in the county seat shall register in person with the County Clerk. Those who do not shall register without charge before an official registrar in the county or with the County Clerk.

Electors absent from their county may register before any notary public or County Clerk in the county where they may be. In such cases the notary public or County Clerk shall mail the affidavit of the elector to the County Clerk of the elector's county and may collect a fee not to exceed 25 cents from the elector.

Section 10 Criticized. Section 10 of the act has been criticized by election experts as to some extent making a misnomer of the term "permanent registration." It provides that as long as the elector lives in the precinct in which he registers, and at least votes at one election held throughout the county in the biennial period ending November 11 after the regular biennial general election, he shall not be required to register again. If he fails to vote as stipulated he shall re-register. If the elector moves to another precinct or to another county in the state, or if the boundaries of the precinct in which he registered have been changed, or if he desires to change from one political party to another, he may register again at his request.

It is declared that in cities and other growing communities precinct boundaries are changing constantly and as a result thousands of electors to vote will have to re-register at least every two years. It also is pointed out that many voters may be disfranchised as a result of this provision through the changing of precinct boundaries. Election experts say the law should have been provided for the county clerks to make the changes necessary for re-registering the electors in the proper precincts when boundaries are changed without the necessity for re-registrations.

Blank Fellow Elector. When an elector moves from one county to another the county clerk is authorized to send his registration blank to the clerk of the county where the elector lives.

House bill 228, introduced by Representative Childs, is designed to facilitate voting. It dispenses with the poll book and substitutes the precinct list. It will not be necessary for the clerk to write the names of the electors as they vote, but instead he will check the names off on the list.

One of the most important laws passed by the Legislature is that providing for the election of delegates to party conventions and Presidential Electors. Under the law which it repeals, which was prepared by W. S. Utren, the voters could vote for only one delegate and one elector. Under the new law, with the present apportionment, each party will be entitled to two delegates from each Congressional district and four from the state at large. Under it every elector of a political party will have the right to vote for two delegates from his Congressional district and four from the state at large. Nomination of Presidential electors is from the state at large, and each voter will be entitled to cast his ballot for the number of electors allotted his party. The provision under the present law which authorizes the state to pay the expenses of the delegates is repealed and henceforth they will have to pay their own expenses, as they do in other states.

TRADE BODY IS POWERFUL. New Federal Commission to Go Into Effect Today.

WASHINGTON, March 15.—The second great governmental agency created by Congress since the administration of President Wilson will come into being at noon tomorrow when Joseph E. Davies, of Wisconsin; Edward N. Hurley, of Illinois; William H. Harris, of Georgia; William H. Parry, of Washington; and George Rublee, of New Hampshire, are sworn in as members of the Federal Trade Commission, with far-reaching powers of supervision over American business enterprises.

The declared purpose of the commission set forth in its creative act

62% OF WHEAT YIELD IS PREDICTED

Pacific Northwest Crop May Be Record if Weather Is Ideal to Harvest.

ACREAGE GAIN IS GREAT

Farmers Sure to Get as Much as Last Year and Prospects Good for Larger Returns—Shortage in Rain Is Not Feared.

(Continued From First Page.)

ferent spots in the fields, the larger areas not being frozen. There is a lot of moisture in the ground now from the late winter and early spring rains, the farmers are hoping for more, as the winter started with two inches and a half deficiency in rainfall.

The fruit crop in Walla Walla County in all probability will be heavier than ever. New orchards coming into bearing and the careful attention given the old ones combine to make the outlook good. Interest has been aroused in perfect fruit, and farmers are co-operating to remove the diseased conditions and give the trees a change to bear.

Orchardists are looking for a better year because of the steps to regulate the selling. The trees are in good condition now and the present warm weather soon will cause the leaves to be thrown out.

Wenatchee marketed last year almost 7000 carloads of fruit, 5500 being apples. Notwithstanding the general gloominess of the year, it is estimated that the tonnage will be less than last year, the fruit trees of every variety are very heavily set and the yield next fall should be an off year and that the district crop last year was 75 per cent over last year and growers are pruning and spraying with the object of keeping up this record.

BAKER FIELDS IN FINE SHAPE. Farmers Are Hopeful Over Prospects for All Grains.

BAKER, Or., March 15.—(Special.)—Farmers in Baker and other counties are hopeful over the grain prospects. There has not been a complaint registered this spring, despite the gloomy outlook, that the grain farmers did not get their winter wheat in early enough, and there were complaints because it did not come up before the early snow. They now report, however, that the grain is coming up early this year and that they expect at least a normal yield, possibly more.

There has been an increase of nearly 20 per cent in the grain acreage and all are looking forward to a good crop and satisfactory prices. The same conditions of yield and price govern the wheat crop, although raisers are more conservative in their statements because of the possibility of there being a water shortage due to the late start of the season. A smaller chance for sufficient irrigation.

Fruit growers also report a good outlook. They do not expect a bumper crop, but they are hopeful for a normal yield. Apples, cherries, peaches and pears promise a yield equal to that of previous years, and other fruits are promising. There are less danger, however, of frost damage than last year, because of the previous efforts to eradicate the pest.

MUCH NEW LAND IS PLANTED. Forty Per Cent Increase in Acreage in Union County.

UNION, Or., March 15.—(Special.)—Farmers and fruit growers are anticipating bountiful harvests in Union County. Most fall grain came through the winter in excellent shape and the little that was destroyed is being reseeded. The increase in the acreage of fall grain over last year is 40 per cent and is doing fine. So far there has been little rainfall, but crops are in nowise in need of moisture. The ground is in excellent condition and farmers throughout the valley are working overtime to sow and plant the spring crop. The estimate for the season is that the acreage is from 10 to 15 per cent. The increased acreage is the result of plowing up meadows and pastures and the heavy yield from this new wheat ground is expected.

Fruit prospects are promising and trees are filled with the swelling buds. The cherry crop promises to be the most abundant the valley has known, barring late frosts and killing freezes. Many young orchards are coming into bearing. The season is now advanced. There is less snow in the mountains than usual at this time.

WHEAT STANDS WINTER WELL. Prospects for Grain Good in Klickitat Valley.

GOLDENDALE, Wash., March 15.—(Special.)—The Klickitat Valley crop of fall grain is doing fine. The grain is in good shape and the fears of some growers that the grain would be damaged by the dry freeze last December proved to be unfounded. The grain in its present condition appears to be as thrifty as any crop ever seeded here and has a good, healthy color. The records kept by the Government weather man at Goldendale show that the precipitation of moisture during February after the frost went out of the ground in the grain fields has been above normal.

The grain on the Bickleton plateau, which has an altitude of 3000 feet, was protected by snow on which fell late in November before the ground became frozen, and the wheat fields in Eastern Klickitat have had the benefit of the moisture absorbed by the ground when the snow melted in relation to the rainfall since.

The wheat acreage has not been increasing to any great extent over last season.

RAINS ASSURE LARGE CROPS. Only Small Amount of Reseeding in Wasco Necessary.

WASCO, Or., March 15.—(Special.)—Fall wheat is showing up fine in this section. About an average acreage is in, but the rain fall is above normal. Up to the third of the present month and for the 30 days preceding there were three inches of rain, which practically insured big crops at least against fear from lack of moisture.

In a radius of ten miles tributary to Wasco careful figures show that there are about 1000 acres frozen out during the winter. This is but a small part of the snow acreage and will be resown with the spring grain. Winter seems to be entirely broken and the ranchers are all in the fields.

AVERAGE CROP MAY BE GROWN. Favorable Weather Will Help Umatilla Conditions.

PENDLETON, Ore., March 15.—(Special.)—The condition of winter wheat in Umatilla County is better than usual, but growers believe that favorable weather during the remainder of the growing season may result in a crop not far below the average. The winter wheat acreage has probably been increased, but the barley acreage shows a corresponding decrease.

The hybrid condition of wheat are in the best condition, while club and red

62% OF WHEAT YIELD IS PREDICTED

Pacific Northwest Crop May Be Record if Weather Is Ideal to Harvest.

ACREAGE GAIN IS GREAT

Farmers Sure to Get as Much as Last Year and Prospects Good for Larger Returns—Shortage in Rain Is Not Feared.

(Continued From First Page.)

ferent spots in the fields, the larger areas not being frozen. There is a lot of moisture in the ground now from the late winter and early spring rains, the farmers are hoping for more, as the winter started with two inches and a half deficiency in rainfall.

The fruit crop in Walla Walla County in all probability will be heavier than ever. New orchards coming into bearing and the careful attention given the old ones combine to make the outlook good. Interest has been aroused in perfect fruit, and farmers are co-operating to remove the diseased conditions and give the trees a change to bear.

Orchardists are looking for a better year because of the steps to regulate the selling. The trees are in good condition now and the present warm weather soon will cause the leaves to be thrown out.

Wenatchee marketed last year almost 7000 carloads of fruit, 5500 being apples. Notwithstanding the general gloominess of the year, it is estimated that the tonnage will be less than last year, the fruit trees of every variety are very heavily set and the yield next fall should be an off year and that the district crop last year was 75 per cent over last year and growers are pruning and spraying with the object of keeping up this record.

BAKER FIELDS IN FINE SHAPE. Farmers Are Hopeful Over Prospects for All Grains.

BAKER, Or., March 15.—(Special.)—Farmers in Baker and other counties are hopeful over the grain prospects. There has not been a complaint registered this spring, despite the gloomy outlook, that the grain farmers did not get their winter wheat in early enough, and there were complaints because it did not come up before the early snow. They now report, however, that the grain is coming up early this year and that they expect at least a normal yield, possibly more.

There has been an increase of nearly 20 per cent in the grain acreage and all are looking forward to a good crop and satisfactory prices. The same conditions of yield and price govern the wheat crop, although raisers are more conservative in their statements because of the possibility of there being a water shortage due to the late start of the season. A smaller chance for sufficient irrigation.

Fruit growers also report a good outlook. They do not expect a bumper crop, but they are hopeful for a normal yield. Apples, cherries, peaches and pears promise a yield equal to that of previous years, and other fruits are promising. There are less danger, however, of frost damage than last year, because of the previous efforts to eradicate the pest.

MUCH NEW LAND IS PLANTED. Forty Per Cent Increase in Acreage in Union County.

UNION, Or., March 15.—(Special.)—Farmers and fruit growers are anticipating bountiful harvests in Union County. Most fall grain came through the winter in excellent shape and the little that was destroyed is being reseeded. The increase in the acreage of fall grain over last year is 40 per cent and is doing fine. So far there has been little rainfall, but crops are in nowise in need of moisture. The ground is in excellent condition and farmers throughout the valley are working overtime to sow and plant the spring crop. The estimate for the season is that the acreage is from 10 to 15 per cent. The increased acreage is the result of plowing up meadows and pastures and the heavy yield from this new wheat ground is expected.

Fruit prospects are promising and trees are filled with the swelling buds. The cherry crop promises to be the most abundant the valley has known, barring late frosts and killing freezes. Many young orchards are coming into bearing. The season is now advanced. There is less snow in the mountains than usual at this time.

WHEAT STANDS WINTER WELL. Prospects for Grain Good in Klickitat Valley.

GOLDENDALE, Wash., March 15.—(Special.)—The Klickitat Valley crop of fall grain is doing fine. The grain is in good shape and the fears of some growers that the grain would be damaged by the dry freeze last December proved to be unfounded. The grain in its present condition appears to be as thrifty as any crop ever seeded here and has a good, healthy color. The records kept by the Government weather man at Goldendale show that the precipitation of moisture during February after the frost went out of the ground in the grain fields has been above normal.

The grain on the Bickleton plateau, which has an altitude of 3000 feet, was protected by snow on which fell late in November before the ground became frozen, and the wheat fields in Eastern Klickitat have had the benefit of the moisture absorbed by the ground when the snow melted in relation to the rainfall since.

The wheat acreage has not been increasing to any great extent over last season.

RAINS ASSURE LARGE CROPS. Only Small Amount of Reseeding in Wasco Necessary.

WASCO, Or., March 15.—(Special.)—Fall wheat is showing up fine in this section. About an average acreage is in, but the rain fall is above normal. Up to the third of the present month and for the 30 days preceding there were three inches of rain, which practically insured big crops at least against fear from lack of moisture.

In a radius of ten miles tributary to Wasco careful figures show that there are about 1000 acres frozen out during the winter. This is but a small part of the snow acreage and will be resown with the spring grain. Winter seems to be entirely broken and the ranchers are all in the fields.

AVERAGE CROP MAY BE GROWN. Favorable Weather Will Help Umatilla Conditions.

PENDLETON, Ore., March 15.—(Special.)—The condition of winter wheat in Umatilla County is better than usual, but growers believe that favorable weather during the remainder of the growing season may result in a crop not far below the average. The winter wheat acreage has probably been increased, but the barley acreage shows a corresponding decrease.

The hybrid condition of wheat are in the best condition, while club and red

62% OF WHEAT YIELD IS PREDICTED

Pacific Northwest Crop May Be Record if Weather Is Ideal to Harvest.

ACREAGE GAIN IS GREAT

Farmers Sure to Get as Much as Last Year and Prospects Good for Larger Returns—Shortage in Rain Is Not Feared.

(Continued From First Page.)

ferent spots in the fields, the larger areas not being frozen. There is a lot of moisture in the ground now from the late winter and early spring rains, the farmers are hoping for more, as the winter started with two inches and a half deficiency in rainfall.

The fruit crop in Walla Walla County in all probability will be heavier than ever. New orchards coming into bearing and the careful attention given the old ones combine to make the outlook good. Interest has been aroused in perfect fruit, and farmers are co-operating to remove the diseased conditions and give the trees a change to bear.

Orchardists are looking for a better year because of the steps to regulate the selling. The trees are in good condition now and the present warm weather soon will cause the leaves to be thrown out.

Wenatchee marketed last year almost 7000 carloads of fruit, 5500 being apples. Notwithstanding the general gloominess of the year, it is estimated that the tonnage will be less than last year, the fruit trees of every variety are very heavily set and the yield next fall should be an off year and that the district crop last year was 75 per cent over last year and growers are pruning and spraying with the object of keeping up this record.

BAKER FIELDS IN FINE SHAPE. Farmers Are Hopeful Over Prospects for All Grains.

BAKER, Or., March 15.—(Special.)—Farmers in Baker and other counties are hopeful over the grain prospects. There has not been a complaint registered this spring, despite the gloomy outlook, that the grain farmers did not get their winter wheat in early enough, and there were complaints because it did not come up before the early snow. They now report, however, that the grain is coming up early this year and that they expect at least a normal yield, possibly more.

There has been an increase of nearly 20 per cent in the grain acreage and all are looking forward to a good crop and satisfactory prices. The same conditions of yield and price govern the wheat crop, although raisers are more conservative in their statements because of the possibility of there being a water shortage due to the late start of the season. A smaller chance for sufficient irrigation.

Fruit growers also report a good outlook. They do not expect a bumper crop, but they are hopeful for a normal yield. Apples, cherries, peaches and pears promise a yield equal to that of previous years, and other fruits are promising. There are less danger, however, of frost damage than last year, because of the previous efforts to eradicate the pest.

MUCH NEW LAND IS PLANTED. Forty Per Cent Increase in Acreage in Union County.

UNION, Or., March 15.—(Special.)—Farmers and fruit growers are anticipating bountiful harvests in Union County. Most fall grain came through the winter in excellent shape and the little that was destroyed is being reseeded. The increase in the acreage of fall grain over last year is 40 per cent and is doing fine. So far there has been little rainfall, but crops are in nowise in need of moisture. The ground is in excellent condition and farmers throughout the valley are working overtime to sow and plant the spring crop. The estimate for the season is that the acreage is from 10 to 15 per cent. The increased acreage is the result of plowing up meadows and pastures and the heavy yield from this new wheat ground is expected.

Fruit prospects are promising and trees are filled with the swelling buds. The cherry crop promises to be the most abundant the valley has known, barring late frosts and killing freezes. Many young orchards are coming into bearing. The season is now advanced. There is less snow in the mountains than usual at this time.

WHEAT STANDS WINTER WELL. Prospects for Grain Good in Klickitat Valley.

GOLDENDALE, Wash., March 15.—(Special.)—The Klickitat Valley crop of fall grain is doing fine. The grain is in good shape and the fears of some growers that the grain would be damaged by the dry freeze last December proved to be unfounded. The grain in its present condition appears to be as thrifty as any crop ever seeded here and has a good, healthy color. The records kept by the Government weather man at Goldendale show that the precipitation of moisture during February after the frost went out of the ground in the grain fields has been above normal.

The grain on the Bickleton plateau, which has an altitude of 3000 feet, was protected by snow on which fell late in November before the ground became frozen, and the wheat fields in Eastern Klickitat have had the benefit of the moisture absorbed by the ground when the snow melted in relation to the rainfall since.

The wheat acreage has not been increasing to any great extent over last season.

RAINS ASSURE LARGE CROPS. Only Small Amount of Reseeding in Wasco Necessary.

WASCO, Or., March 15.—(Special.)—Fall wheat is showing up fine in this section. About an average acreage is in, but the rain fall is above normal. Up to the third of the present month and for the 30 days preceding there were three inches of rain, which practically insured big crops at least against fear from lack of moisture.

In a radius of ten miles tributary to Wasco careful figures show that there are about 1000 acres frozen out during the winter. This is but a small part of the snow acreage and will be resown with the spring grain. Winter seems to be entirely broken and the ranchers are all in the fields.

AVERAGE CROP MAY BE GROWN. Favorable Weather Will Help Umatilla Conditions.

PENDLETON, Ore., March 15.—(Special.)—The condition of winter wheat in Umatilla County is better than usual, but growers believe that favorable weather during the remainder of the growing season may result in a crop not far below the average. The winter wheat acreage has probably been increased, but the barley acreage shows a corresponding decrease.

The hybrid condition of wheat are in the best condition, while club and red

Greatest Event in Woman's Life

All human experience looks back to motherhood as the wonder of wonders. The patience, the fortitude, the sublime faith during the period of expectancy to the mother love bestowed upon the most helpless but most marvelous creation—a baby.

Women are quick to learn from each other those helpful agencies that aid to comfort, and yet are perfectly safe to use and among these they recommend "Mother's Friend."

"Mother's Friend" external application designed to lubricate the breast, flat muscles and skin that protect the abdomen. It has been in favorable use for nearly half a century and is known to mothers in almost every settled community in the United States who highly recommend it. You will find it on sale in drug stores. "Mother's Friend" is utterly harmless, contains no caustic drugs, very beneficial, very soothing and a wonderful help.

Get a bottle of "Mother's Friend" today. Write to the nearest drug store and write to us for our instructive little book to mothers. Address Bradford Regulator Co., 212 Lamar Bldg., Atlanta, Ga.

ALMOST CRAZY WITH ITCHING AND BURNING

SEATTLE, Wash., Jan. 26, 1915.—"My face and body were a solid mass of little sores which itched and burned me so badly that I almost went crazy. They started in the form of little pimples which opened and formed sores. I could not sleep at night and at work if I became overheated it would itch something terrible! I used all kinds of soaps, salves and prescriptions that did me no good. I had this skin trouble for a year or more before I used Resinol. As soon as I started using Resinol Ointment and Resinol Soap the itching and burning stopped at once, and in five weeks my face and body were as clear and soft as could be. I used only two jars of Resinol Ointment and three cakes of Resinol Soap."

"A friend of mine had a bad case of skin trouble. His face was broken out so badly he was ashamed to go out on his face." (Signed) August E. Mills, 2206 Elliot ave. Every drugist sells Resinol Ointment and Resinol Soap. For trial free, write to Dept. 167, Resinol, Baltimore, Md.—Adv.

chaff suffered by reason of the cold, dry weather during the winter. In some places much of the latter varieties had to be reseeded, while in other places the condition of the grain seemed to be up to normal. About the only discouraging feature of the present conditions is the two-inch deficiency in the soil.

Fruit prospects are very bright. The cold nights which are retarding the growth of the grain is keeping the fruit buds back and lessening the danger from frosts later.

WHITMAN PROSPECTS ARE FINE. Winter Acreage Normal, but Spring Planting Larger.

COLFAX, Wash., March 15.—The condition of wheat in Whitman County was never better at this time of year. The county is a little short of average moisture, but the spring rains have put spring plowing in fine condition. The winter wheat acreage is normal, while the spring wheat acreage will be much larger than any former year.

The fruit crop passed through the winter with no freeze to injure it and prospects are all that could be expected.

WILL HAVE 2,000,000 BUSHELS. Grand Ronde Valley Will Produce Increased Crop.

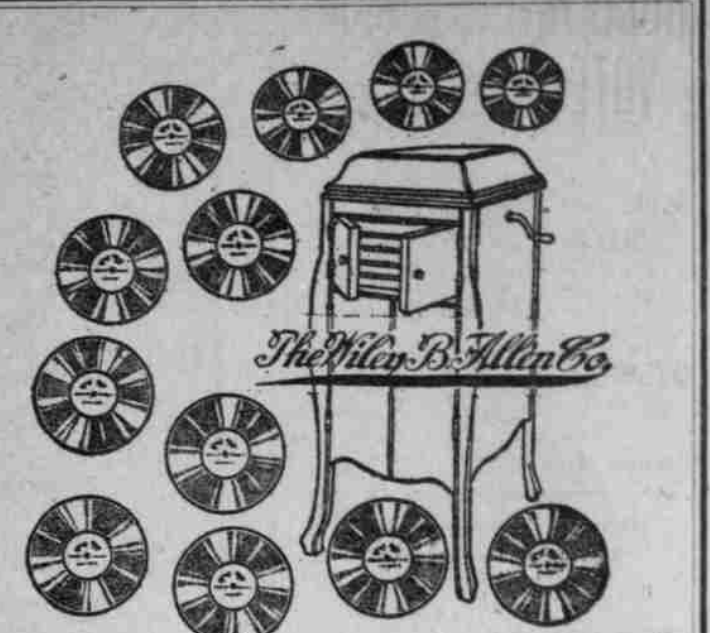
LA GRANDE, Or., March 15.—(Special.)—The Grand Ronde Valley wheat crop will reach the 2,000,000-bushel mark this year. This is the opinion of wheat buyers who keep close tap on the acreage. They say that everything that can be made to grow wheat has been given over to that purpose.

Forty Fold, which is the chief wheat sowed for winter purposes, came through remarkably well, and not a single acre is reported needing reseeded. A few of the other brands of wheat did not fare so well, but reseed-

ing is a negligible quantity in this valley, according to a careful survey of the situation. Just when snow was needed last winter, it came, and in sufficient quantities.

Prospects Fine at Riverville. RITZVILLE, Wash., March 15.—(Special.)—The condition of winter wheat in this vicinity is unusually favorable. About 75 per cent of the county acreage is in winter wheat. There is little reseeded being done in the county and fields are beginning to turn green. The acreage is unusually large, owing to the high prices paid for wheat during the past winter.

Late William Cole is Honored. DULUTH, Minn., March 15.—Mining and railroad men of Northern Minnesota paid their last tribute to William H. Cole, prominent mining expert at the



The Greatest Victrola Offer

The Wiley B. Allen Co. Parlor Outfit. A Victrola Style X, \$75.00; 24 Selections (your choice of twelve 10-inch Records), \$9.00; or you may select their equivalent in Records of a different size.

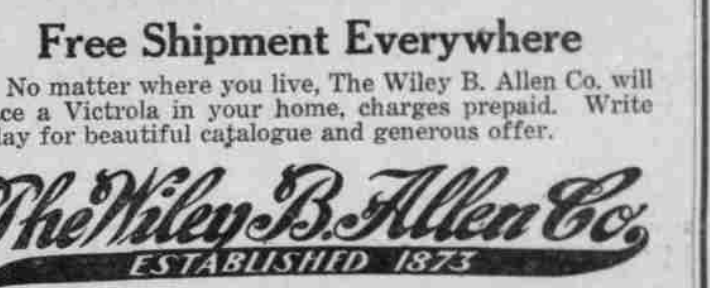
Total Value \$84

Rock-Bottom Terms \$1.75 a Week

Free Trial. Select your Victrola from our immense stock of brand-new Victrolas we have in our warehouses. Try it in your own home at our expense. You don't pay a cent if we cannot satisfy you.

Free Thirty-Day Clause. You don't pay a cent on the Victrola. Pay cash for your records. You then have 30 days to buy records before you begin paying the installments.

Free Shipment Everywhere. No matter where you live, The Wiley B. Allen Co. will place a Victrola in your home, charges prepaid. Write today for beautiful catalogue and generous offer.



Player-Pianos, Music Rolls, Victrolas and Records. MORRISON STREET, AT BROADWAY. Other stores: San Francisco, Oakland, Sacramento, San Jose, Fresno, Los Angeles, San Diego and other Coast cities.

MEAT CAUSE OF KIDNEY TROUBLE. Take Salts to Flush Kidneys! Back Hurts or Bladder Bothers.

If you must have your meat every day, eat it but flush your kidneys with salts occasionally, says a noted authority who tells us that meat forms uric acid which almost paralyzes the kidneys in their efforts to expel it from the blood. They become sluggish and weaker, then you suffer with a dull misery in the kidney region, sharp pains in the back or sick headache, dizziness, your stomach aches, tongue coated and the weather is bad you have rheumatic twinges. The urine gets cloudy, full of sediment, the channels often get clogged for a few days and your kidneys will then act fine. This famous salt is made from the acid of grapes and lemon juice, combined with sodium bicarbonate and used for generations to flush and stimulate sluggish kidneys, also to neutralize the acids in urine, so it no longer irritates, thus ending bladder weakness. Jad Salts is inexpensive; cannot injure, and makes a delightful effervescent lithia-water drink.—Adv.

ANTI-KAMNIA TABLETS FOR ALL PAIN. "The efficiency of any drug," says Dr. C. F. Robbins, "is known to us by the ease with which it relieves pain and disease by means of any preparation, we certainly are warranted in saying that the principal symptoms of all diseases is pain, and this is what the patient wishes to get rid of first. These tablets are so promptly, the patient is most likely to be relieved by them. One remedy which will affect a permanent cure. One remedy which will have used largely in many cases of kidney trouble. I have put them to the test on many occasions, and have never been disappointed. I found them especially valuable for headaches of malarial origin, where quinine combined with other remedies which also for headaches of a neuralgic origin, and especially for women's ailments. These tablets give prompt relief, and in a short time the patient is able to go about as usual. These tablets may be obtained at all drug stores. Ask for Kamnia Tablets, they are also prepared for women, neuritis and all neuralgias."

CASTORIA For Infants and Children. Mothers Know That Genuine Castoria Always Bears the Signature of Dr. J. C. Watson. For Over Thirty Years CASTORIA. 900 DROPS. ALCOHOL 3 PER CENT. VEGETABLE PREPARATION. Promotes Digestion, Clears the Bowels, and Relieves the Stomach and Bowels of Infants and Children. Not Narcotic. THE CENTAUR COMPANY, NEW YORK. 16 months old. 35 DROPS - 35 CENTS. Exact Copy of Wrapper.

CASTORIA For Infants and Children. Mothers Know That Genuine Castoria Always Bears the Signature of Dr. J. C. Watson. For Over Thirty Years CASTORIA. 900 DROPS. ALCOHOL 3 PER CENT. VEGETABLE PREPARATION. Promotes Digestion, Clears the Bowels, and Relieves the Stomach and Bowels of Infants and Children. Not Narcotic. THE CENTAUR COMPANY, NEW YORK. 16 months old. 35 DROPS - 35 CENTS. Exact Copy of Wrapper.