

# JITNEYS CAN'T PAY LONG, SAYS EXPERT

Nearly Every Driver Losing Money, but Some Do Not Know It, He Reports.

## CAR CAPACITY TOO LOW

Few Make Wages and None Give Big Enough Estimate for Repairs and Depreciation — Careful Records Show Earnings.

Automobiles as jitneys cannot be operated permanently at a profit, according to conclusions reached by Municipal Traffic Engineer Kirkpatrick, who has completed a study of the record kept by municipal traffic experts on the bridges. Mr. Kirkpatrick bases his opinion as to the failure of the jitneys on an actual investigation of all the items of expense that enter into the business and the possible earning capacity of the machines.

"I have taken the proposition on the basis of an eight-hour day," reports Mr. Kirkpatrick, "and have figured on all the costs of operating. I find that there is so much cost to each mile of operation that the capacity of the automobile is not great enough to take in a sufficient number of nickels to make the operation a success. This, I believe, is true also of the jitney bus as it is being operated in Portland.

**Most Drivers Are Losing.**  
"The jitney drivers think they are making money. If I should tell them they are not they would laugh at me, but the fact still remains that they are not making money. The chances are the man who thinks he is making money is actually losing money.

"There is a certain cost of operation for every mile an automobile runs. If a machine does not pay in eight hours' operation it will not pay in 16 hours' operation or even longer, because the expense goes just the same. A man, we will say, puts \$400 into an automobile. It must be figured that he is losing a per cent interest on that money for that is what he could get by placing the amount in the bank. There is a fixed charge per mile for repair and a fixed charge for gasoline and oil and a charge for depreciation.

**Depreciation Is Overlooked.**  
"The average jitney driver does not stop to figure that it will be only a short time before his machine will be worn out and his investment at a loss. That is the item of depreciation.

"Those who are taking into consideration the depreciation of their cars are figuring the life of the car at five years. But there isn't a car in the jitney service that will stand up for five years under the strain. Other drivers pay a small amount for their cars and figure that by so doing they do not have so great a depreciation cost. What is saved in depreciation is lost in the additional repairs by reason of the age of the machine, so that this proposition is balanced.

"The traffic division of the Department of Public Works has taken the jitney business as a whole in its investigation. We have shown that the average earnings of a jitney in an eight-hour day is \$2.57.

**Earnings but Pay Costs.**  
"That will pay the cost of operating some of the cars, but with others it will not be sufficient. The jitney people, in commenting on this, say that it is only taking eight hours, whereas the machines operate 16 hours in some cases and get advantage of the rush hours of both morning and evening. Our records show that many cars carry their full capacity of passengers during a day and still do not make money. The increased length of operation entails increased expense and overloading entails extra cost of operation.

"Our records prove absolutely that it is an exceptional amateur who is making wages in the jitney business. The most of them either do not know any better, do not care, or are misinformed as to their earnings and their expenses. They are not looking ahead to the time when their entire investment will be wiped out and they will have to reinvest the full amount to continue in business.

"I have absolute tab on every one of the 557 jitneys operating in the city and do not know of one that is making money. I know of many drivers who say they are, but they are misinformed, as our records for the business will show."

# RABBI SCORES CRITIC

IGNORANT ATTACKS ON RELIGION SPOKEN OF IN SERMON.

Harping on Isolated Features Is Like Counting Black Sheep for Flock and Is Menace, He Says.

The criticism of modern day "sophomores of science" and against social forces was compared by Rabbi Jonah B. Wise in his sermon at Temple Beth Israel last night to the method of a shepherd approximating his flock by counting the black sheep in it and noting if they are the same in quantity as the last count.

"The habit of picking out isolated facts and deducing from them the usefulness or menace of an institution gives rise to most of the haphazard criticisms as well as the unhealthy growths to which our modern life is exposed," he said.

"To call such a method unscientific is superficial; to call it dangerous is timely. One example alone is most striking, the bitter and senseless fight on preventive medicine. The arguments against safeguarding public health, as, for instance, in the matter of vaccination, are along the line of thought suggested by counting a few black sheep.

"The same may be said of religion. Faith in God and right to appeal to his power is a generalization that is so inclusive of all human thought that at times it becomes vague. The critics of religion proceed to ignore the phenomena of force and purity which are the essentials of faith and attack it from the side which most religions have felt called upon to defend, the folk narratives of primitive religious literature.

"Criticism is invaluable to progress, but scattered and vague denunciation, on the basis of ill-conditioned and unorganized curiosity, is a danger so grave and at present is so prevalent as to be a menace."

**Michigan Society to Meet.**

The Michigan Society of Oregon will meet Monday night at Masonic Temple. There will be a literary and musical program. All former residents of Michigan and their friends will be made welcome.

GREAT FILM COMEDY WILL BE SHOWN AT ELEVENTH-STREET THEATER.



MARIE DRESSLER AND CHARLIE CHAPLIN IN "TILLIE'S PUNCTURED ROMANCE."

Marie Dressler and Charlie Chaplin are starring in the famous Keystone comedy film, "Tillie's Punctured Romance," to be seen at the Eleventh-street Playhouse next week starting tomorrow afternoon. This has been accepted as the greatest comedy feature ever put out by the Keystone or any other company, and upon its former presentation in this city turned thousands away unable to gain admittance to see it. The large capacity of the Eleventh-street Playhouse, corner Morrison and Eleventh streets, will assure everyone a good seat and performances will be given every afternoon and evening.

# TRIP'S END TRAGIC

Companion of Portland Women Killed Returns.

## MISS KING NEAR COLLAPSE

Auto in Which Mrs. Bell and Mrs. Rule Rode Falls over Embankment in Hawaii—Mrs. Bell's Funeral Will Be Today.

Details of the tragic automobile accident on the island of Hawaii last week, when Mrs. Miles Bell and Mrs. M. F. Rule were killed and the outing party of the maiden voyagers on the steamer Great Northern was brought to an inauspicious conclusion, were related in Portland by Miss Adelaide King, 311 East Twenty-sixth street, North, who arrived home yesterday.

Only the fact that there were 200 in the party which took the trip to Volcano House and the crowd conditions caused Miss King to become separated from Mrs. Rule and Mrs. Bell probably accounts for Miss King's escaping the fate of her two companions. Miss King had intended riding in the auto which went over the bank, sniffling out the lives of the two Portland women and killing the driver, but she was unable to get to her seat when the car started.

Miss King, together with Mrs. Rule and Mrs. Bell, sailed on the new steamer ship Great Northern from Honolulu February 16. They arrived in San Francisco February 21 and landed the next day. On February 22 they started from Hills on the western side of the island, to make the trip up the Volcano Kilauea. On February 25 they started from Hills to Glenwood, about three-fourths of the way to the volcano, on the train. From there they took automobiles to Volcano House.

**Miss King Feared Accident.**  
According to Miss King her car reached Volcano House about 1 o'clock and waited three-quarters of an hour for the other machine to appear. When they did not come, she inquired of one of the men in charge if there might not be an accident. He reassured her, but she was uneasy, and when an hour had passed she implored him to send someone back to ascertain for sure if everything was all right. It was 3:30 before the driver returned with the news of the accident. Miss King was immediately taken back to the scene of the accident, where the bodies already had been taken from the car and placed on stretchers.

Mrs. Rule and Mrs. Bell were riding in the front seat with the driver. There were six other persons in the car, all of whom were uninjured.

The other two automobiles took the rest of the party in their cars and went on to finish the trip after they had helped to recover the machine and placed the bodies of the two women and the chauffeur on stretchers.

## Car Topples Over Embankment.

"The road was of loose, lava formation, and the car in attempting to pass a large truck fell over an embankment, about 10 feet high. The car turned over, breaking the neck of the driver. The backs of Mrs. Rule and Mrs. Bell were broken and they were killed instantly.

The machine fell into a bower of native flowers and ferns, and the natives, after covering the bodies of the dead with flowers, carried them on stretchers back to Hills.

Miss King returned to San Francisco on the Great Northern, where she attended to the transporting of the body of Mrs. Rule to the East. Mrs. Bell's body arrived in Portland yesterday morning and the funeral services will be held from St. David's Church this morning at 9:15 o'clock. Burial will be at St. Ann.

Miss King and Mrs. Rule were employed in the Portland office of the United States Forestry Service and had taken the Hawaiian trip for their vacation. Miss King hopes to be able to return to her work next week.

Although there were several cases of tonsillitis on Board the Great Northern, it was held in quarantine only an hour in the outer harbor at San Francisco, and then all but three patients were allowed to land. The others were released the following morning.

## MR. ALDERMAN INDORSED

Clubwomen Adopt Resolution Asking Retention as Superintendent.

A resolution has been adopted and submitted by the bureau of social equity of the Council of Women Voters, to the School Board, urging that Superintendent L. R. Alderman be retained in his position, pointing out that the schools of the city have made unparalleled progress under his administration and urging the need of continuing the policy which he has pursued.

The bureau of equity is composed of the presidents and representative members of the most important women's clubs in the city and the resolution referred to the School Board by this bureau implies the backing of a great force of women's votes.

## Business Block Leased.

The two-story building located on the northeast corner of Sixth and Alder streets has been leased by the Women's Millinery Company, now in business at Fourth and Morrison streets, for a period of five years, dating from July 1. Before the building is occupied by the millinery company it will be extensively altered and repaired at an expense of about \$10,000. This work will be done under the direction of Architects MacNaughton & Raymond.

## Request Made for Police Captain's Gun

and Suicide Threatened—Identity Is Investigated.

Because her relatives cannot become reconciled to her husband, a pretty woman of 24 years, giving her name as Dolly St. Denis, has appealed to the Women's Protective Division of the Department of Public Safety, to be placed in the women's quarters at the City Jail for 30 days. She made her appearance at police headquarters late Thursday night, when she asked Police Captain Circle to lend his gun to her that she might kill herself. Upon being re-

quested she demanded to be placed in jail.

Whether her request will be granted or not is not decided, but the girl probably will be released if thoughts of suicide can be driven from her mind.

"My folks objected when I was married to him, and they simply won't like him," the girl said tearfully yesterday.

April Home Journal Patterns, Fashion Books and "Good Dressing" Now Ready for Distribution

24 Stamps Will be Given on All Charge Accounts If Paid in Full by the 10th of Each Month

Each Guest to Our Tea Room Will Receive a 24-Pound Box of Societe Chocolates With Their Lunch TODAY

# Olds, Wortman & King

Reliable Merchandise—Reliable Methods Pacific Phone Marshall 4800 Home Phone A 6231

Candy Day TODAY

At the Bargain Circle on the main floor. Delicious, who's some sweets, of popular varieties on sale for one day at reduced prices. Treat the home folks.

# Double Stamps From 9 A.M. to 1 P.M.

With Cash Purchases Made Today in All Depts. of the Store

Women's \$1.50 Gloves At \$1.35

Main Floor—Supply your Easter Glove needs today and save. Women's select stock kid Gloves in all the very newest shades for Spring—standard \$1.50 quality—all sizes. The pair \$1.35

Silk Hosiery, 65c a Pair

Main Floor—Women's Silk Hose in all the new shades, such as sand, putty, 65c greens, grays. Priced special, pair 65c NEW CLUB crook-handle Umbrellas for women. Shown in all colors. \$5.75 Priced very special for only \$5.75

# Toilet Articles and Drugs

Underpriced for Today

- Five bars Ivory and one 18c
- bar of Lurline Soap, today 16c
- 25c Above Soap will not be delivered except with other purchases made in the Drug Department. Limit, 6 bars to a customer. Come early, 5c
- 15c Pears' Unscented Soap for 12c
- 15c 4711 White Rose Soap at 12c
- \$1.00 Imported Bocabella Castile Soap priced special, the bar, 65c
- 10c Monkey Scouring Soap at 5c
- 10c Hand or Kitchen Sapallo 7c
- 25c Massatla Talc. Powder at 11c
- 25c Imperial Talc. Powder at 12c
- 50c Dora Bourjois Powder at 39c
- 25c Petro, 1-lb. jar, special, 10c
- 50c Bay Rum, 6-oz. bottle, at 35c
- 25c Denver Mud on sale at 15c
- 50c size 30c—\$1.00 size at 60c
- 25c Pasteurine Tooth Paste 15c
- 50c Cold Cream in jars now 25c
- 25c Kolynos Tooth Paste at 16c
- 50c Pompeian Massage Crm. 39c
- 25c Ricksecker's Cold Cream 15c
- 50c Swamp-Root on sale at 39c
- 10c Fluff's Mougret, for hair, 5c
- 50c bottle pure Olive Oil at 38c
- 50c Lavaris Mouth Wash at 38c
- 29c Hospital Cotton now at 21c
- 50c Sanitary Napkins now at 35c
- 50c Phenolax Wafers now at 35c
- 25c Tooth Brushes now at 15c
- 15c H2-O2 Peroxide now only 8c
- 25c Witch Hazel on sale at 21c
- 25c Lyon's Tooth Powder at 15c
- 25c Corylopsis Talcum now at 12c
- 10c Old Dutch Cleanser now at 7c
- 15c Toilet Paper, 1500 sheets, 10c
- 50c Hair Brushes on sale at 39c
- \$1.50 Hedden's Toilet Water at \$1
- 10c Fairskin Oatmeal Soap at 7c
- 50c Fitch's Hair Tonic now 35c

**\$1 Hair Brushes Borden's Milk At 50c**

Main Floor—Extra special offering! Rubber cushion Hair Brushes with solid back and double bristle. Regular \$1.00 grade, spe-50c Metal Hot Water Bags. Priced special \$1.75

# New Spring Millinery

Special Showing Today in Millinery Salons SECOND FLOOR

If you want to know what's to be in vogue this season visit our Millinery Salons today and view the newest models from Eastern style centers. Everything that's smart and up to the minute will be found in this wonderful collection. New shepherdess sailors, English sailors, poke bonnets, etc., in all the latest shades. Trimming features include flowers, ribbons, fruit, celluloid novelties, quills, etc. Don't fail to see these new models.

Special Showing of New Pattern Hats MODERATE PRICES

# Women's Leather Hand Bags \$1.00

Main Floor—Women's stylish new Handbags in "Melon" and other popular shapes. Genuine leather with inside fittings. Exceptionally good Bags, at \$1.00

**\$3.50 Combs at 75c**

Main Floor—Fancy Combs, Barettes, Braid Pins, Etc., in great variety of styles. Plain and rhinestone. 75c set. Worth to \$3.50, choice 75c

# GIRL SEEKS JAIL CELL

PARENTS DISLIKE HUSBAND AND "DOLLY ST. DENIS" ASKS REFUGEE.

Request Made for Police Captain's Gun and Suicide Threatened—Identity Is Investigated.

Because her relatives cannot become reconciled to her husband, a pretty woman of 24 years, giving her name as Dolly St. Denis, has appealed to the Women's Protective Division of the Department of Public Safety, to be placed in the women's quarters at the City Jail for 30 days. She made her appearance at police headquarters late Thursday night, when she asked Police Captain Circle to lend his gun to her that she might kill herself. Upon being re-

# UP Comes Mr. Dandelion

ONCE FOR ALL TIME—no backache—no blistered hands—no stained clothes—no broken turf—lose fat—thin—fishy—Operated automatically. Child can pull 'em up with the

**SIMPLEX AUTOMATIC WEED PULLER**

(Pat. U. S. and Canada.) The only genuine Weeder on the market. All others merely cut off or break the tops, leaving the roots to grow two heads thick—but one grows before. INSIST on the SIMPLEX—it pulls 'em up by the roots. They can't come back. It saves time, money and bodily discomfort and will afford the wife and children a world of fun. If your dealer hasn't it, we will supply you. Mailed to any point in the U. S. for \$1.00, postpaid. Guaranteed money back if not found more satisfactory. THE SIMPLEX CO., 212 Howe Bldg., Seattle, Wash. Dealers and Agents wanted.

so I just want to get away from it all for a while." The women's department is endeavoring to trace her identity, for the name she gave is not believed to be her own. The girl says that she lives on the outskirts of Portland, but refuses to give her address. She admits that her parents also make their home in this city.

The young woman is of medium height, has brown eyes and dark hair and is apparently of a melancholy temperament. She said that she had once attempted suicide but that it had failed.

The girls in South America have been known to construct a tunnel three miles in length.

Four rounded tablespoons—Ghirardelli's Ground Chocolate; two cups milk; one cup milk; butter the size of a small hen's egg; one teaspoonful vanilla; two drops lemon extract. Boil sugar, butter and milk until thick and add chocolate; cook until thickened when tried; then add extract and take from fire, stirring until nearly cold or becomes sugary. Turn on a well buttered dish and cut in squares.

This recipe makes the best fudge you ever ate—This is but one of the dainty goodies that can be made with

# Ghirardelli's Ground Chocolate

As a beverage it is beyond compare. There's nothing so good—nothing so economical. Ghirardelli's Ground Chocolate is as old as the state. Its purity, strength and healthfulness is retained in hermetically sealed tins.

Order from your grocer to-day.

D. GHIRARDELLI CO. San Francisco Since 1859

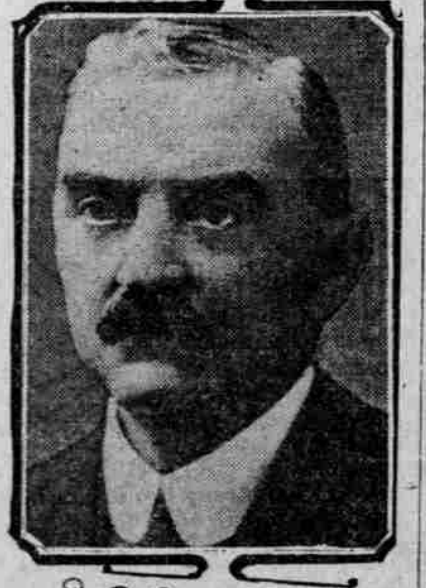
# INCREASED STABILITY IS PROCLAIMED IN MERGER

S. C. Pier Says Linking of Commerce Bodies Means Greater Impetus to Affairs of State and Greater Power Than Expected.

## CONSOLIDATION TALK NO. 11

THE Portland Chamber of Commerce and the Portland Commercial Club are organizations that are not local to Portland, nor even to the State of Oregon, says S. C. Pier, sales manager of Marshall-Wells Hardware Company. "While primarily they stand for the progress and uplift of the city and state, the influence of these bodies is far-reaching for they are possessed of a power that is recognized throughout our country.

"It is a rare occasion when so much earnest thought is given to a project of this character, but in this consolidation our citizens, men and women alike—from business as well as from the social walks of life, even though they are not enrolled members, have evinced a keen interest in this 'come-together' movement that speaks well for the perception and intelligence of our people.



S. C. Pier, Trustee

The "go-it-alone" idea has been tried—in fact being vented and has been found wanting. The linking of the Chamber of Commerce and the Commercial Club can be likened to a wedlock of mature years, which will result in practical and broader ideas which in its union will ripen into a fruitage that should give the affairs of Oregon an impetus that will stand for more and give us greater power and strength than we have ever dared hope for.

"Co-operation" is a much-used word these days, but here is a joint effort that will create enterprise and give stability to every movement in the onward march of Wonderful Oregon."