

CARRANZA ARMY IS NEAR MEXICO CITY

Zapata Chieftain With 4000 Men Said to Be Determined to Offer Resistance.

BUSINESS HOUSES CLOSED

Report That Garza Has Been Taken Prisoner Denied by Agent of Convention Forces—Foreigners Are Not Molested.

PUPILS VISIT GOVERNOR

ABOUT 400 INVADE EXECUTIVE'S OFFICE IN COURSE OF DAY.

ADVANCE GUARD IN SUBURB

Main Body of Carranza Forces Within Seven Miles of Capital.

ANCIENT LAW UNEARTHED

YALE HAS TABLET OF BABYLONIANS OF 2500 B. C.

PATRONAGE POWER COSTLY

Extension of Civil Service Is Advocated by ex-President Taft.

PROJECT FUND SUGGESTED

Desert Land Board Makes Report on Tumalo Construction.

DETECTIVE IS ACCUSED

Minister Testifies to Bribe Offer in the Frank Case.

WAGES ARE COMPARED

RAILROADS CONTEND ENGINEERS IN WEST ARE BETTER PAID.

RETURN OF PRIZE ASKED

ROOSEVELT WOULD EXPEND NOBEL FUND HIMSELF.

ARMY CABLE RATES LOWER

Reduction of 25 Per Cent on Messages to Alaska Announced.

NEW TORPEDO IS TESTED

Submarine Projectiles Designed to Reach Ship at 10,000 Yards.

trials of D. S. Lehon, C. C. Tedder and Arthur Thurman, indicted for subornation of perjury in the Leo M. Frank murder case.

Lehon, Tedder and Thurman are charged with procuring false affidavits from Ragsdale and R. I. Barber, saying they overheard James Conley, a negro, acknowledge the murder of Mary Phagan, a factory girl, for which Frank stands convicted.

STATE CAPITOL SALEM, OR., JAN. 28.

(Special.)—This was "school day" in the Governor's office. The invading scholars closed close to 400. After he had shaken hands with all or said a word of greeting to the Governor, the students from Monmouth Normal, Corvallis, and Salem sent more.

THE FIRST TO COME WERE THE MEMBERS OF THE MONMOUTH NORMAL SCHOOL.

They entered the 9 o'clock calm of the Statehouse by singing in the rotunda before entering the executive offices. Thereafter they filed through the Governor's private office, each one being introduced to Governor Withycombe.

THE NEXT EDUCATIONAL INVASION CAME FROM CORVALLIS.

One hundred and seventy members of the public schools there speedily overran the outer defenses of Secretary Putnam's office and gained the inner citadel of the Governor's room. They were in charge of R. W. Kirk, superintendent, J. R. N. Bell, chairman of the Corvallis Board of Education, formally introduced the Governor to the school children.

THE INDICATIONS ARE THAT THE CAPITAL WILL BE EVACUATED WITHOUT RESISTANCE.

EL PASO, TEX., JAN. 28.—NEITHER PROVISIONAL PRESIDENT ROGUE GONZALEZ NOR THE VILLA ARMY HAS EVACUATED MEXICO CITY, ACCORDING TO AN OFFICIAL STATEMENT ISSUED TODAY BY THE VILLA MILITARY AUTHORITIES AT JUAREZ.

THE PROVISIONAL PRESIDENT OF MEXICO, ROGUE GONZALEZ GARZA, HAS INFORMED US TODAY THAT HE REMAINS IN THE CITY OF MEXICO, WHERE HE IS RECEIVING THE GOVERNMENT EMANATING FROM THE SOVEREIGN CONVENTION AND THAT THE CAPITAL IS NOT MENACED BY ANY REBEL FORCES.

"TROOPS OF THE DIVISION OF THE NORTH (VILLA'S ARMY) NOW OCCUPY THE FOLLOWING PLACES IN THE STATE OF COAHUILA:

Cuatro Cieneegas, Sabinas and Monclova, positions which were formerly occupied by Carranza forces, which were utterly defeated. With the occupation of these places the government of Mexico dominates the coal region of Coahuila state and thus controls sufficient fuel to keep up traffic on all railroads in the republic."

CHARLOTTESVILLE, VA., JAN. 28.—CURTAILMENT OF THE PRESIDENT'S POWER BY EXTENSION OF THE CIVIL SERVICE WAS ADVOCATED BY WILLIAM H. TAFT TONIGHT IN THE SECOND OF THREE ADDRESSES AT THE UNIVERSITY OF VIRGINIA.

THE EX-PRESIDENT CALLED ATTENTION TO "THE WASTE OF THE PRESIDENT'S TIME AND THE CONSUMPTION OF HIS NEUROUS VITALITY" BECAUSE OF CONGRESSMAN'S INTERFERENCE AS TO LOCAL APPOINTMENTS.

"THE EFFECT OF THE PRESENT POWER OF APPOINTMENT UPON THE PRESIDENT'S PRESTIGE AND CONTROL IN CONGRESS," MR. TAFT SAID, "IS SHOWN IN THE GRADUAL IMPAIRMENT OF HIS INFLUENCE WITH MEMBERS OF CONGRESS AS HIS TERMS LENGTHEN AND THE OFFICES THAT HE HAS TO FILL BECOME FEWER IN NUMBER. THIS IS TRUE OF THE MOST POPULAR OF PRESIDENTS."

ROME, JAN. 28.—WORD HAS BEEN RECEIVED HERE THAT THE GOVERNOR OF YEMEN, ARABIA, HAS DISCHARGED FROM OFFICE THE VICE-GOVERNOR OF HOEDEIDA, THE COMMANDER AND OFFICERS OF THE GENDARMERIE AND THE HEAD OF THE POLICE, AND HAS APPOINTED A NEW VICE-GOVERNOR, IN RESPONSE TO INSTRUCTIONS FROM CONSTANTINOPLE. THIS DOES NOT ENTIRELY SATISFY EITHER THE ITALIAN GOVERNMENT OR PUBLIC OPINION IN CONNECTION WITH THE RECENT DEMANDS BY ITALY ON TURKEY.

THESE DEMANDS WERE THE OUTCOME OF THE FORCIBLE SEIZURE BY THE TURKS OF THE BRITISH CONSUL, MR. RICHARDSON, WHO HAD TAKEN REFUGE IN THE ITALIAN CONSUL IN ITALY, REQUIRES THAT THE CONSUL SHALL BE SET AT LIBERTY AND THAT THE ITALIAN FLAG SHALL BE SALUTED.

WASHINGTON, JAN. 28.—DURING THE YEAR ENDED JUNE 30 LAST A TOTAL OF 10,302 PASSENGERS, INCLUDING 265 PASSENGERS, WERE KILLED IN ACCIDENTS ON RAILROADS AND IN RAILROAD SHOPS REPORTING TO THE INTERSTATE COMMERCE COMMISSION. IN ADDITION 192,682 PERSONS WERE INJURED, OF WHOM 15,121 WERE PASSENGERS.

IN THE PRECEDING YEAR 10,264 PERSONS, INCLUDING 493 PASSENGERS, WERE KILLED AND 192,682 PERSONS, INCLUDING 15,121 PASSENGERS, WERE INJURED.

E. J. ECKER, OF SONNYSIDE, TEX., HAS BOUGHT SEVERAL OF THE NEARLY A DOZEN PUBLIC HOUSES, RESTAURANTS, AND MANY RESIDENCES.

Only 2 More Days of the January White Sale

Special List of Important Sales For Friday's Selling

MAIL ORDERS FILLED BY EXPERT SHOPPERS Sipman Wolfe & Co. "Merchandise of Merit Only" Phone Marshall 5000 A 6C21

The Fashion Book of the Pictorial Review and Spring Patterns are now on sale. What is coming next? What is the very newest mode? They are all answered in the Spring Fashion Book. —Second Floor

Extra Special Offerings of Fine Undermuslins \$1.00 and \$1.25 Envelope Chemises Special 73c and 79c

All Goods Purchased Friday and Saturday Charged on Your March 1st Bill

Women's Coats at \$18.50 to \$35.00 —Of cheviot, broadcloth, boucle, zibeline and plaid worsteds. Now \$8.45

75c Separate Drawers 44c —Of longcloth and crepe in knickerbocker and straight-leg styles.

Continuation of the Great Sale of Shirts For Men At \$1.19 or 3 for \$3.00

\$5 to \$8 Tailored Walking Skirts —Of serge and plaids, in white, black, tan and navy. Now \$2.48

Combination Suits, Selling to \$3.50 Special \$1.59

—All new Spring shirts, which sell regularly at \$2.00 and \$1.50.

Blouses Selling Regularly to \$3.00 —Of voile, linen, crepe and lingerie, plain and novelty styles. Now \$1.50

Longcloth Gowns, Selling to \$1.50 Very Special 98c

—Soft bosom, soft French cuff style. Of finest woven madras, light-weight flannels, fine percales, granite cloths and soisette.

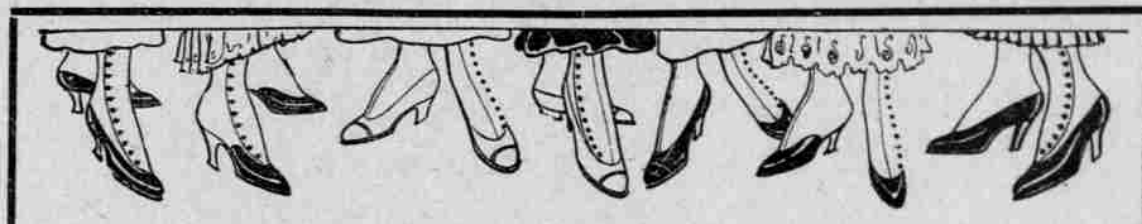
\$5.00 Jersey Silk Petticoats —In black, emerald, hunters' greens, navy, plum and white. Now \$3.95

Skirts Selling to \$1.50, Now 98c —Of longcloth, with deep ruffles of embroidery or lace. Fourth Floor

—Soft bosom, soft French cuff style. Of finest woven madras, light-weight flannels, fine percales, granite cloths and soisette. First Floor

Regular \$3.00 to \$3.50 Lace Curtains in white and Arabian color. 2 1/2 yards long and 36 inches wide. —Of net with Irish point or braided designs. \$1.29 Pair

Last Opportunity for Buying Whittall Rugs AT SPECIAL PRICES



—This season's discontinued patterns—the best American-made rugs that can be had. Every rug is new and absolutely perfect—every pattern most attractive.

A Manufacturer's Delay in Delivery Makes Possible This Greatest Sale of Women's High-Grade Shoes

Thousands of New Shoes as Well as Shoes Taken From Our Regular Stock—All at the Most Extraordinary Reductions. Best Styles

\$91.50 Anglo-Persian Rugs \$69.50

Thousands of New Shoes as Well as Shoes Taken From Our Regular Stock—All at the Most Extraordinary Reductions. Best Styles

—Size 10 feet 6 inches by 13 feet 6 inches.

\$6.00 Shoes \$5.00 Shoes \$3.50 Shoes

\$101.50 Anglo-Persian Rugs \$81.50

—Button boots with fawn, gray and black topings, with patent leather vamp.

—Size 11 feet 3 inches by 15 feet.

—Patent colt shoes with plain toe, Cuban-Louis heels and cloth quarters, in black.

\$69.50 Royal Worcester Rugs \$55.00

—Patent colt and dull calf shoes, full flocked button style with mat kid topings.

—Size 10 feet 6 inches by 13 feet 6 inches.

—Gunmetal vamps, Cuban heels, toes with tips.

\$78.00 Royal Worcester Rugs \$65.00

—Vicic kid button shoes with cloth or kid tops, with inch-and-a-half heels. —Basement

—Size 11 feet 3 inches by 15 feet. Fifth Floor

—Including plain toe shoes with cloth tops, button style and patent leather vamps.

—Also walking boots in button style with mat kid tops and patent leather or gunmetal vamps.

Economy Basement Store

75c and 85c Children's Flannelette Gowns Sizes 2 to 14 Years 49c —White and fancy striped extra quality flannelette.

Regular \$1.00 Boys' Felt Hats Special 35c

Fleeced Cotton Blankets \$1.00 Blankets 77c \$1.25 Blankets 83c —Heavily fleeced, best finish.

\$1 Welsbach Gas Lights 65c —Inverted style, full brass burner, full or half-frosted globes.

Revol Dress Snaps Regularly 5c 1c Dozen Black and White All Sizes

New Black Satene Petticoats Just Received by Express Go on Sale Friday for the First Time At 89c —Jersey top petticoats with 18-inch accordion-pleated flounces.

New Coverall Aprons Of Extra Quality Gingham 25c Reg. Price Would Be 50c —In small and medium plain and navy blue and white checks, made with belted back and pocket.

Women's Cotton Hosiery (Seconds) Regular Price 25c Sale 17c Three Pairs for 50c —Fast color, mercerized black cotton, seamless, double soles.

Women's Waists Voile, Crepe, Lingerie \$1.35 to \$1.50 Waists 98c \$1.00 to \$1.25 Waists 69c —All styles, including tailored and dress models.

OFFENDING TURKS OUSTED Italy Still Insists on Salute for Scierure of British Consul.

CHICAGO, JAN. 28.—That the productive efficiency of railroad engineers in Eastern territory is higher, while their wages are lower than in the West, was the assertion made today by J. H. Keefe, assistant general manager of the Gulf, Colorado & Santa Fe Railroad, who continued his testimony before the board of arbitration in the Western railroad wage hearing.

WASHINGTON, JAN. 28.—Representative Bartholdt introduced a bill today to dissolve the foundation for promotion of industrial peace and return to Colonel Roosevelt the \$10,000 cash Nobel prize the Colonel gave as a nucleus. Senator Lodge has introduced a similar bill.

SEATTLE, WASH., JAN. 28.—A 25 per cent reduction in Alaska cable rates for night commercial messages will become effective February 1, it was announced today by the United States Army Signal Corps, operating the Alaska military cable and telegraph system.

WAGES ARE COMPARED RAILROADS CONTEND ENGINEERS IN WEST ARE BETTER PAID.

RETURN OF PRIZE ASKED ROOSEVELT WOULD EXPEND NOBEL FUND HIMSELF.

ARMY CABLE RATES LOWER Reduction of 25 Per Cent on Messages to Alaska Announced.

NEW TORPEDO IS TESTED Submarine Projectiles Designed to Reach Ship at 10,000 Yards.

Productive Efficiency in East Declared Higher—Locomotives and Trains Loads Are Smaller.

Failure of Others to Add to Nucleus Held to Have Hidden Talent Under Napkin for Eight Years.

SEATTLE, WASH., JAN. 28.—The new night rates to principal points in Alaska for a 10-word message, excluding address and signatures, are: Juneau, \$1.20; Skagway, \$1.40; Ketchikan, \$1.40; Valdez, \$1.80; Nome, \$2.85.

WASHINGTON, JAN. 28.—Tests of a submarine projectile which fired at a range of from 4000 to 10,000 yards will explode under the bottom of a battleship were conducted late yesterday at a secluded bight in the Potomac River below here, and members of a Congressional naval party which returned today were prepared to press for appropriation for further experiments.

CHICAGO, JAN. 28.—That the productive efficiency of railroad engineers in Eastern territory is higher, while their wages are lower than in the West, was the assertion made today by J. H. Keefe, assistant general manager of the Gulf, Colorado & Santa Fe Railroad, who continued his testimony before the board of arbitration in the Western railroad wage hearing.

WASHINGTON, JAN. 28.—Representative Bartholdt introduced a bill today to dissolve the foundation for promotion of industrial peace and return to Colonel Roosevelt the \$10,000 cash Nobel prize the Colonel gave as a nucleus. Senator Lodge has introduced a similar bill.

SEATTLE, WASH., JAN. 28.—The new night rates to principal points in Alaska for a 10-word message, excluding address and signatures, are: Juneau, \$1.20; Skagway, \$1.40; Ketchikan, \$1.40; Valdez, \$1.80; Nome, \$2.85.

WASHINGTON, JAN. 28.—Tests of a submarine projectile which fired at a range of from 4000 to 10,000 yards will explode under the bottom of a battleship were conducted late yesterday at a secluded bight in the Potomac River below here, and members of a Congressional naval party which returned today were prepared to press for appropriation for further experiments.

CHICAGO, JAN. 28.—That the productive efficiency of railroad engineers in Eastern territory is higher, while their wages are lower than in the West, was the assertion made today by J. H. Keefe, assistant general manager of the Gulf, Colorado & Santa Fe Railroad, who continued his testimony before the board of arbitration in the Western railroad wage hearing.

WASHINGTON, JAN. 28.—Representative Bartholdt introduced a bill today to dissolve the foundation for promotion of industrial peace and return to Colonel Roosevelt the \$10,000 cash Nobel prize the Colonel gave as a nucleus. Senator Lodge has introduced a similar bill.

SEATTLE, WASH., JAN. 28.—The new night rates to principal points in Alaska for a 10-word message, excluding address and signatures, are: Juneau, \$1.20; Skagway, \$1.40; Ketchikan, \$1.40; Valdez, \$1.80; Nome, \$2.85.

WASHINGTON, JAN. 28.—Tests of a submarine projectile which fired at a range of from 4000 to 10,000 yards will explode under the bottom of a battleship were conducted late yesterday at a secluded bight in the Potomac River below here, and members of a Congressional naval party which returned today were prepared to press for appropriation for further experiments.

CHICAGO, JAN. 28.—That the productive efficiency of railroad engineers in Eastern territory is higher, while their wages are lower than in the West, was the assertion made today by J. H. Keefe, assistant general manager of the Gulf, Colorado & Santa Fe Railroad, who continued his testimony before the board of arbitration in the Western railroad wage hearing.

WASHINGTON, JAN. 28.—Representative Bartholdt introduced a bill today to dissolve the foundation for promotion of industrial peace and return to Colonel Roosevelt the \$10,000 cash Nobel prize the Colonel gave as a nucleus. Senator Lodge has introduced a similar bill.

SEATTLE, WASH., JAN. 28.—The new night rates to principal points in Alaska for a 10-word message, excluding address and signatures, are: Juneau, \$1.20; Skagway, \$1.40; Ketchikan, \$1.40; Valdez, \$1.80; Nome, \$2.85.

WASHINGTON, JAN. 28.—Tests of a submarine projectile which fired at a range of from 4000 to 10,000 yards will explode under the bottom of a battleship were conducted late yesterday at a secluded bight in the Potomac River below here, and members of a Congressional naval party which returned today were prepared to press for appropriation for further experiments.

CHICAGO, JAN. 28.—That the productive efficiency of railroad engineers in Eastern territory is higher, while their wages are lower than in the West, was the assertion made today by J. H. Keefe, assistant general manager of the Gulf, Colorado & Santa Fe Railroad, who continued his testimony before the board of arbitration in the Western railroad wage hearing.

WASHINGTON, JAN. 28.—Representative Bartholdt introduced a bill today to dissolve the foundation for promotion of industrial peace and return to Colonel Roosevelt the \$10,000 cash Nobel prize the Colonel gave as a nucleus. Senator Lodge has introduced a similar bill.

SEATTLE, WASH., JAN. 28.—The new night rates to principal points in Alaska for a 10-word message, excluding address and signatures, are: Juneau, \$1.20; Skagway, \$1.40; Ketchikan, \$1.40; Valdez, \$1.80; Nome, \$2.85.

WASHINGTON, JAN. 28.—Tests of a submarine projectile which fired at a range of from 4000 to 10,000 yards will explode under the bottom of a battleship were conducted late yesterday at a secluded bight in the Potomac River below here, and members of a Congressional naval party which returned today were prepared to press for appropriation for further experiments.

CHICAGO, JAN. 28.—That the productive efficiency of railroad engineers in Eastern territory is higher, while their wages are lower than in the West, was the assertion made today by J. H. Keefe, assistant general manager of the Gulf, Colorado & Santa Fe Railroad, who continued his testimony before the board of arbitration in the Western railroad wage hearing.

WASHINGTON, JAN. 28.—Representative Bartholdt introduced a bill today to dissolve the foundation for promotion of industrial peace and return to Colonel Roosevelt the \$10,000 cash Nobel prize the Colonel gave as a nucleus. Senator Lodge has introduced a similar bill.

SEATTLE, WASH., JAN. 28.—The new night rates to principal points in Alaska for a 10-word message, excluding address and signatures, are: Juneau, \$1.20; Skagway, \$1.40; Ketchikan, \$1.40; Valdez, \$1.80; Nome, \$2.85.

WASHINGTON, JAN. 28.—Tests of a submarine projectile which fired at a range of from 4000 to 10,000 yards will explode under the bottom of a battleship were conducted late yesterday at a secluded bight in the Potomac River below here, and members of a Congressional naval party which returned today were prepared to press for appropriation for further experiments.

TREAT QUICKLY ALL ABRASIONS WITH POSLAM Do not neglect to treat promptly—and with Poslam—any Rash, Cuts, Abrasions, open sore spots, Pustules, insect bites, pruritis, itching, etc. If your skin burns, itches and aggravates and is disfigured and unsightly in appearance, just use Poslam, and note the difference after one or two applications. Your druggist sells Poslam. For free sample write to Kinsey Laboratory, 22 West Twenty-Third Street, New York. Poslam Soap used daily for toilet and bath, is the best means of cleansing the skin. 25 cents and 15 cents.—ADV.