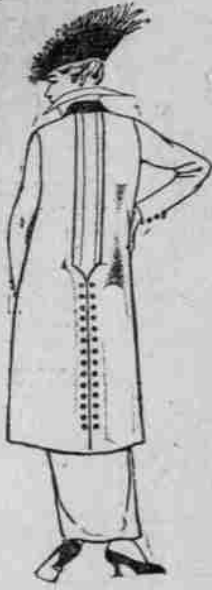


Friday Economy Basement Sales

A Store of Service and Satisfaction. Spending the Least and Getting the Most For It.

The Economy Basement Suit Section Offers the Following Sales

A New Model Cheviot Suit
Never Shown Before
Selling Regularly at \$22.50
Economy Sale \$15



—This attractive suit is made in a new cutaway front effect, with novelty pleated back, trimmed with two rows of velvet buttons.
—Sleeves are long, close-fitting and set-in, finished at wrist with trimming buttons. The collar is made in tailored style, fashioned of black velvet.
—The skirt is made in straight style and fastens down the front under a wide pleat and small pleats at the bottom give the necessary fullness.
—A good quality of satin is used in this suit, the coats being lined throughout in a shade to match the material.
—A prettier, more fashionable suit cannot be found at the price than this suit of fine cheviot, which comes in Copenhagen blue and a new shade of olive green.

More Attractive New Suits at \$15.00
Suits That Would Sell Regularly to \$22.50

—The Economy Basement Suit Section is showing the newest, most up-to-date models in suits, made of fine and wale serges, in black, navy, plum, green, in the fashionable and popular Redington styles. They are made with set-in sleeves and wide belt, some with pleated skirt section. Collars of caracul and velvet, trimmings of braid and buttons. Skirts in yoke, plaited and plain styles to match the coats.
—Come and see these remarkable suits. You will not go away disappointed.

Newest Coats for Fall and Winter Wear
\$9.00 BLACK BOUCLE COATS \$5.00

—A coat that is good-looking and within the reach of every purse. Made of good quality black boucle, with set-in sleeves and collar that may be worn open or buttoned closely around the neck. This coat comes in a medium length and is slightly cutaway in front.

\$15.00 FANCY BOUCLE COATS \$7.95
—Coats that combine style and comfort, full lined with an extra quality of good satin. Made of black boucle in a fancy weave and has collar and deep cuffs of black plush. This long coat fastens in front with a silk frog over large plush buttons.

\$20.00 NOVELTY BOUCLE COATS \$14.95
—These coats are made of an extra quality of silky black boucle and are lined throughout with a heavy quality of black satin. They have a large collar of black fur and their only ornament is a large silk frog in front fastening with self-covered buttons. These coats are extra length and cut full back.

\$22.50 RICH PLUSH COATS \$14.95
—54 inches in length, these coats are made of heavy black plush with set-in sleeves, deep cuffs and large rolling collar which forms revers in front. Cut full in the back and trimmed in front with plush and silk ornament. These exceptional coats are full lined with guaranteed Suskana satin. They may be worn open or closely buttoned at the neck.

Remarkable Dresses of Fine Serges \$5.65
Selling regularly at \$7.00.

—The latest styles are embodied in these dresses of all-wool serges, showing long tunics, sleeves of self material or satin, vests of Roman stripe material and white pique, with collars and cuffs to match the trimmings. These dresses are new and decidedly attractive.

Men's Shirt Sale

Shirts Selling to \$1.00
Economy Sale 69c

—If you need shirts for every-day wear—shirts for good hard wear, you can get the kind you want right here, for today we are placing on sale the largest lot of men's shirts we have ever had at this price. All styles—every one in this season's pattern—every one new and well made.

SHIRTS WITH PLAIED BOSOMS
SHIRTS WITH SOFT CUFFS
SHIRTS WITH LAUNDERED CUFFS
SHIRTS WITH SOFT BOSOMS

will be found here, so that every man can select the particular style of shirt he wears.

—These shirts come in dozens of patterns, too—plain single and cluster stripes, in the most desirable colors.

—And they are made of extra quality soisettes, madras and percales that will give the best of service and satisfaction.

Neck Ties in New Designs
Sale 25c

—A large assortment of our newest ties, in designs that are most attractive, as well as plain colors. They come in silks, velvets and knitted effects, in stripes, figures, dots, Persian designs and changeable effects, in the most desirable colorings for the present season's wear.

\$1.00 Women's Fleece-Lined Union Suits
Economy Sale 79c

—Union suits in just the right weight for present wear. Made with long sleeves, high neck and ankle length, cut full in every measurement. These garments are extra well made, with soft fleeced finish for additional warmth.

—They come in white only.

Bone Pins
5c Box

—Each box contains 6 of the best grade of hair pins, smooth in finish.
—In shell color only.

School and Gymnasium Blouses for Girls
Selling to \$1.75
59c

—Made of white galatea, trimmed with braid, collars of white, red and white, blue and white striped material, or plain blue, with rows of braid.

—They are made in **band, Norfolk, sailor and coat styles.**

in a great variety of different effects, long and short sleeves, with and without dickey; an exceptional assortment to choose from.

No Phone Orders—No Mail Orders
Filled in the Economy Basement

An Unprecedented Sale of Newest
Silk Crepe de Chine Waists
Friday \$2.15

Regular Price Would Be \$3.50

—These waists just came in by express. Every one new and fresh, and if there is one waist left by the close of day we will be much surprised, for never before have we seen waists of this quality, style and workmanship offered at anywhere nearly as little a price. And the styles—every one up to the minute in every detail.

—Vest effects, hemstitched and plaited, collars in rolling, flaring, pointed and wired effects. Sleeves in set-in style, with fitted cuffs, and some with deep armholes. One style with hemstitched ruffles down the front. Trimmed with pearl, silk and cut jet buttons, and one style with black moire bow at the neck.

—In fact, it would be impossible to describe the different styles in detail, but each waist is made with an individual style of its own. They are also finished at the waist line with a rubber band, which adjusts the gathers perfectly.

—Select your waists early in the morning, for we know they will not last long at this figure.



Sipman Wolfe & Co
"Merchandise of Merit Only"

Millinery in Latest Styles
Trimmed Plush Sailors \$1.95

—In two different models, both made of fine quality plush.
—One has medium wide brim and soft crown and is trimmed with a large single flower on each side and one in front.
—The other is also on the sailor order, with soft crown, and is trimmed with peacock feathers around the crown and bows of moire ribbon, in tailored style.

—Both of these hats are lined with a silk-finished material and are exceptionally well made and artistically trimmed. They come in black and desirable colors.

Ready-to-Wear Tailored Hats \$1.49

—Of fine black velvet, with small and medium sailor brims and soft or novelty crowns. Trimmed in tailored fashion with moire ribbon and tiny bows. These hats are in shapes becoming to every face and are exceptional at this price.

Newest Sailor and Dress Shapes
95c, \$1.45, \$1.49

—Included in this assortment are sailor hats with medium wide and very wide brims, soft and shaped crowns and a variety of different styles and shapes for dress and street wear. They are made of an excellent quality of black velvet, every one correct in fashion, in models for women, misses and girls, shapes to suit every individual taste. With the addition of a stick-up, these hats will be transformed into the smartest, most attractive models, at little cost.

Feather Stick-Ups
Economy Sale 49c

—In a wonderful variety of shapes and styles, ostrich fanies, peacock stick-ups and combination effects, now so much in demand for fashionable millinery.



Women's and Children's Hosiery at Economy Sale Prices

—While these stockings are marked "seconds," the imperfections are so very slight as to hardly be noticeable.

25c Women's Lisle Stockings 17c.

—Seamless, with reinforced toes, soles and high spliced heels and double garter top. An excellent hose for wear.

20c Children's Ribbed Stockings 12c.

—Fine ribbed, in medium weight, just the thing for school wear. Black only; extra double spliced; sizes 5½ to 9½.

BOTHA TAKES FIELD

South African Commander to Rally Waverers.

DUTCH COMMANDS CALLED

Government Adopts Stern Measures and Causes Arrests of Prominent Men on Charges of High Treason.

CAPE TOWN, via London, Oct. 15.—As a result of Colonel Maritz' rebellion in the northwest of the Cape province, General Louis Botha, a marked effect on the Union of South Africa and commander of the troops of the union, is taking the field earlier than he originally intended to. General Botha is placing himself at the head of several strong Dutch commands, organized on the old burgher line, which are affiliated with regiments trained by the union defense force.

Commandants, field cornets and burghers who served under General Botha in the South African war are rallying to his call irrespective of their political feeling, to fight alongside the English defense of the empire against which they were in arms 12 years ago. This fact has had a marked effect on waverers who are now flocking to General Botha's standard.

The other rebels within the union, having openly declared themselves, the government considers itself not obliged to deal gently with them out of consideration for certain Dutch peoples who, although they are not strong supporters of the government, are said to have drawn the line at rebellion.

The government also is adopting stern measures by arresting prominent

men who are suspected of sowing sedition, charging them with high treason.

SCOUTS SENT BY REFUGEES
Belgians May Return to Antwerp, if Report Is Favorable.

LONDON, Oct. 15.—A dispatch from Rotterdam to Reuter's Telegram Company says that the Belgian fugitives in Holland elected a committee which went to Antwerp today to study the possibilities of repatriation for the refugees. If the report of the committee is favorable, it is likely there will be a general return of the Belgians to their homes.

As indicating the panic among those leaving Ostend, more than a dozen oyster trawlers arrived at Lowestoft, Suffolk, today crowded with refugees, mostly with women and children or old men.

CANADA CHARGES TREASON
Montreal Steamship Agent Accused of Aiding Austrian Reservists.

MONTREAL, Oct. 15.—Israel Schroeder, a steamship ticket agent, was arrested here today on a charge of high treason. The police declare Schroeder sold tickets to Austrian reservists and advised them to say they were Roumanians in order to evade the law prohibiting belligerents from leaving Canada.

A person convicted of high treason may be sentenced to death.

Wilson Indorses Glyn.
WASHINGTON, Oct. 15.—Governor Glyn, of New York, was indorsed for re-election today by President Wilson, who sent him a letter expressing the hope that the voters of New York would return him to office "with an emphatic majority."

ASSASSIN IS PROUD

Slayer of Archduke Says He Does Not Repent Deed.

VOICE OF SLAVS IS HEARD

Prisoner at Sarajevo Eloquent as He Declares by Rebellion Only Could Slavs Meet Tyranny and Oppression.

ROME, Oct. 15.—Additional details have been received here of the arraignment at Sarajevo Tuesday of Gavrio Princip, the assassin of Archduke Francis Ferdinand of Austria, together with Princip's wife and 21 other alleged accomplices in the crime.

According to these details Princip, in addition to having admitted that he shot the Archduke and his wife, declared that far from repenting his deed he was proud of what he had done. It was not a crime, he said, as his object was not to kill a man but to show the desperation to which the whole Slav population under Austria had been reduced.

After the Slavs had tried by every means, legal and illegal, to obtain justice and recognition of their rights, Princip said, Austria continued to trample on their nationality, language, culture, religion and everything which the Slav nation as a whole or families as individuals considered most sacred, using all the weapons at its disposal.

"The moment arrived when rebellion was a duty; when the only thing possible was to resist by striking at the individual who incarnated such a despotic, retrograde and cruel tyranny," Princip declared. The prisoner grew eloquent as he proceeded, declaring that he was no more a criminal than those Hungarians, Italians, Poles or Irishmen "who because of the same

distressing conditions in their countries during the 19th century followed Kosuth, Mazzini, Mikoslavski and Daniel O'Connell in attacking tyrants and tyranny, regardless of the means they used."

MANY GERMANS ARE ILL
Professor Bosserer Chosen to Combat Threatened Epidemic.

AMSTERDAM, Oct. 15, via London.—The Het Leven publishes today an interview from its correspondent at Metz.

SAGE TEA TURNS GRAY HAIR DARK

It's Grandmother's Recipe to Bring Back Color and Lustre to Hair.

That beautiful, even shade of dark, glossy hair can only be had by brewing a mixture of Sage Tea and Sulphur. Your hair is your charm. It makes or mars the face. When it fades, turns gray, streaked and looks dry, wispy and scraggy, just an application or two of Sage and Sulphur enhances its appearance a hundredfold.

Don't bother to prepare the tonic; you can get from any drug store a 50-cent bottle of "Wyeth's Sage and Sulphur Compound" ready to use. This can always be depended upon to bring back the natural color, thickness and lustre of your hair and remove dandruff, stop scalp itching and falling hair.

Everybody uses "Wyeth's Sage and Sulphur" because it darkens so naturally and evenly that nobody can tell it has been applied. You simply dampen a sponge or soft brush with it and draw this through the hair, taking one small strand at a time; by morning the gray hair has disappeared, and after another application it becomes beautifully dark and appears glossy, lustrous and abundant.—Adv.

had with Professor Bosserer, who, he says, has been charged with the task of combating a threatened epidemic among the German troops.

The correspondent declares Profes-

sor Bosserer gave him an unfortunate account of the health of the German soldiers, asserting that there were a large number of cases of dysentery and inflammation of the lungs and sev-

eral cases of typhus. He added, how-

ever, according to the correspondent, that nothing also could be expected when troops had to stay five days in

trenches half full of water.

STATEWIDE PROHIBITION MEANS BIGGER TAXES

They're Too Big Now

VOTE 333 X NO AGAINST PROHIBITION

(Voting Qualifications: Six months' residence in the state, 30 days in precinct.)

Defeat of the proposed prohibition amendment will have no effect on the efficient local option or home rule statutes now in force, and each community will continue to determine its individual stand on the matter of granting licences.

(Paid Advertisement, Taxpayers' and Wage-Earners' League of Oregon, Portland, Or.)