

# LANDSLIDE STOPS TOP PANAMA CANAL

### Traffic Through Waterway Is Held Up by Rock and Dirt Near Gold Hill.

## REOPENING SOON IS HOPE

Strip 1500 Feet Long and From 65  
to 100 Feet Wide Goes, Throwing  
Many Thousand Cubic  
Yards Into Channel.

PANAMA, Oct. 15.—A serious landslide on the east side of the Panama Canal north of Gold Hill occurred during the night. Traffic has been stopped and Colonel Goethals could not say when the canal would again be navigated. It is hoped the waterway will be open again in a few days.

## CANAL MAY OPEN IN WEEK

Late News From South Is Slide Can  
Be Moved Speedily.

That the slide reported yesterday in the Culebra cut of the Panama Canal is not as serious as was first assumed and that it will be cleared in not to exceed seven days is information received by W. R. Grace & Co. at San Francisco and transmitted to the Panama Canal office here.

## BEAVER WILL DRYDOCK HERE

Suit Being Heard Dealing With Collision of Year Ago.

To be cleaned and painted, as is required each year by company's regulations, the steamer Beaver will be on the Port of Portland drydock October 21. The vessel is due here Monday and will sail a week from today and abundant time will be allowed for the work.

## NEWS FROM OREGON PORTS

COOS BAY, Or., Oct. 15.—(Special).—The steamer Breakwater arrived today from Portland with 500 tons of freight and 73 passengers.

## SHIP BILL INDORSED

Chamber of Commerce Trustees  
Take Action.

## BONDING PLAN PROPOSED

Senator Lane to Be Asked to Introduce  
Bill Compelled by Captain  
Chilcott for Government  
to Guarantee Bonds.

## RECALL ON AT DENVER

CITY VOTES ON REMOVAL PETITION  
TODAY FOR FIRST TIME.

## EDITORS MEET TODAY

NEWSPAPER PROBLEMS TO BE DISCUSSED AT OREGON CITY.

## MEDICAL AUTHORITY SLAMS COFFEE USE

Says Its All Bight as a Medicine But  
Not as a Food—Contains Destructive  
Drug Caffeine.

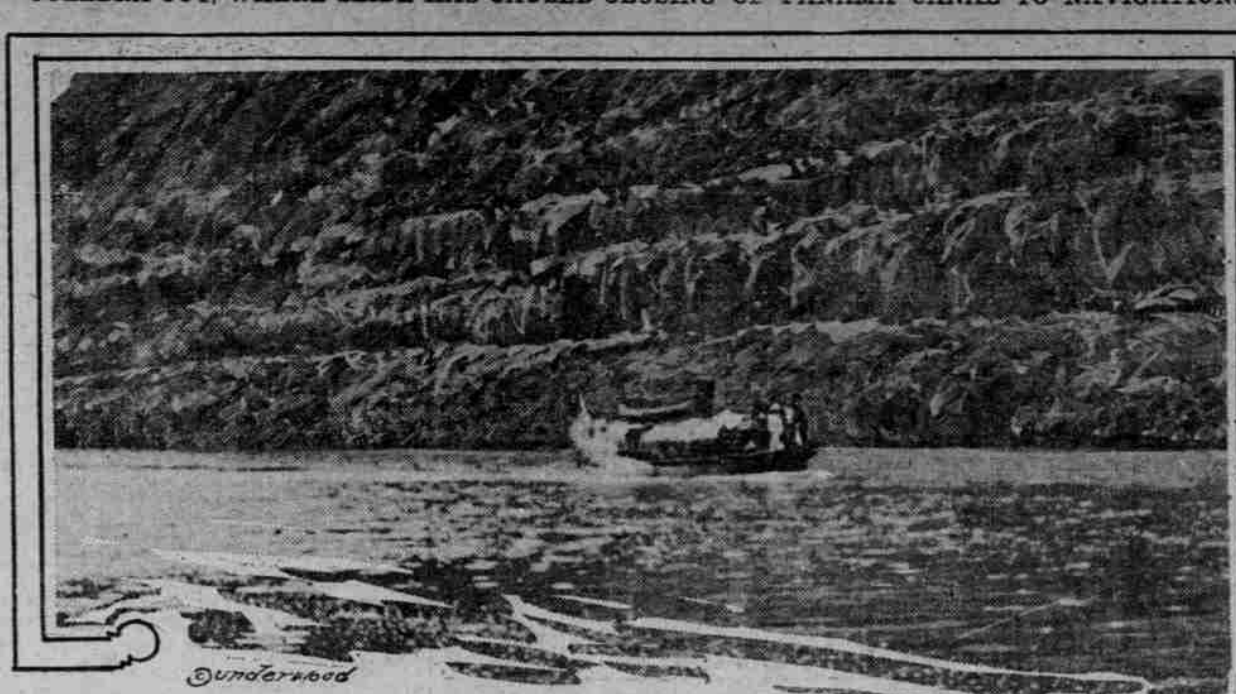
## THE RETAILERS' MONEY MAGNET

Properly used show windows are a money magnet to the retailer.

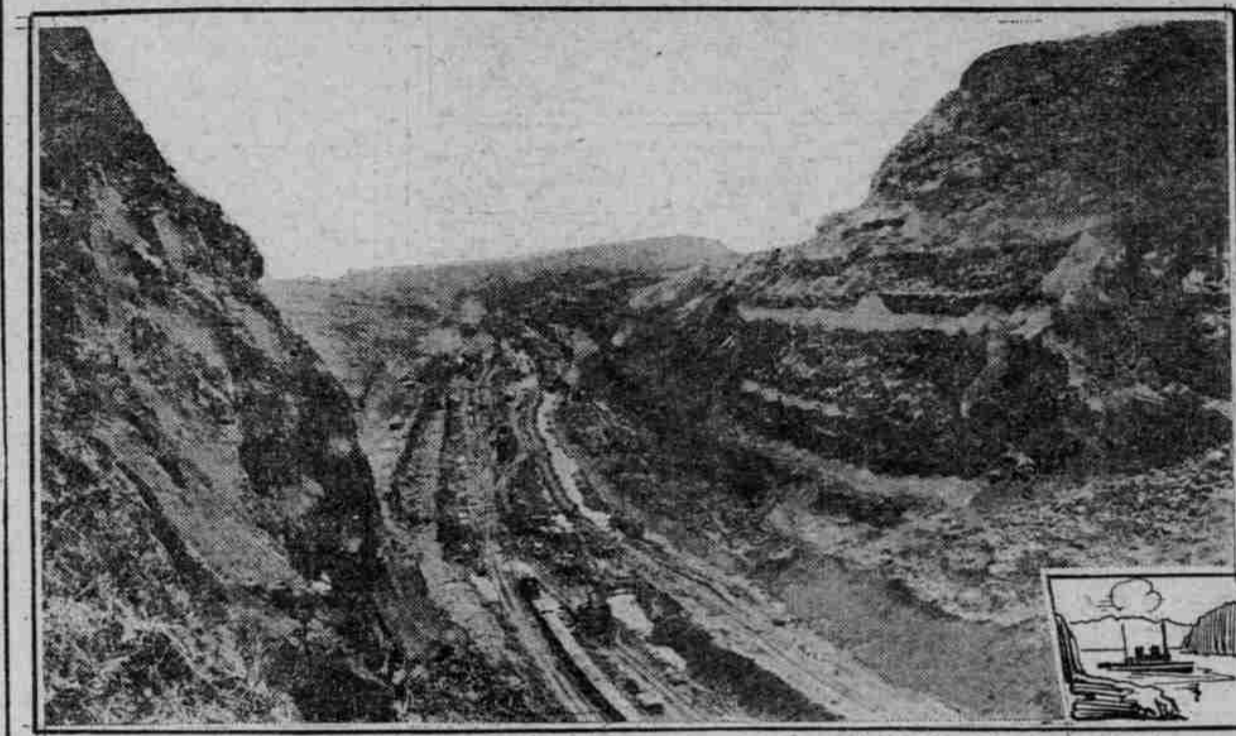
## "RHEUMATISM NO MORE"

Compounded by E. F. DAVIS, 24 LEWIS, BOSTON.

# CULEBRA CUT, WHERE SLIDE HAS CAUSED CLOSING OF PANAMA CANAL TO NAVIGATION.



UPPER VIEW SHOWS CULEBRA CUT AFTER WATER WAS TURNED IN. WORK WAS IN PROGRESS.



BELOW—CULEBRA CUT WHILE WORK WAS IN PROGRESS.

## SHIP BILL INDORSED

Chamber of Commerce Trustees  
Take Action.

## BONDING PLAN PROPOSED

Senator Lane to Be Asked to Introduce  
Bill Compelled by Captain  
Chilcott for Government  
to Guarantee Bonds.

## RECALL ON AT DENVER

CITY VOTES ON REMOVAL PETITION  
TODAY FOR FIRST TIME.

## EDITORS MEET TODAY

NEWSPAPER PROBLEMS TO BE DISCUSSED AT OREGON CITY.

## MEDICAL AUTHORITY SLAMS COFFEE USE

Says Its All Bight as a Medicine But  
Not as a Food—Contains Destructive  
Drug Caffeine.

## THE RETAILERS' MONEY MAGNET

Properly used show windows are a money magnet to the retailer.

## "RHEUMATISM NO MORE"

Compounded by E. F. DAVIS, 24 LEWIS, BOSTON.

# CHILDREN HATE PIGS, CALMEL AND CASTOR OIL

If Cross, Feverish, Constipated,  
Give 'California Syrup  
of Figs.'

Look back at your childhood days. Remember the "doses" of castor oil—castor oil, calomel, cathartics. How you hated them, how you fought against taking them.

With our children it's different. Mothers who cling to the old form of physics simply don't realize what they do. The children's revolt is well-founded. Their tender little "insides" are injured by them.

If your child's stomach, liver and bowels need cleansing, give only delicate "California Syrup of Figs." Its action is positive, but gentle. Millions of mothers keep this harmless fruit laxative handy; they know children love to take it; that it never fails to clean the liver and bowels and sweeten the stomach, and that a spoonful given today saves a sick child tomorrow.

Ask your druggist for a 50-cent bottle of "California Syrup of Figs," which has full directions for babies, children of all ages and for grown-ups plainly on each bottle. Beware of counterfeiters. See that the name "California Syrup of Figs." is prominent. Refuse any other kind with contempt.—Adv.

## TIDES AT ASTORIA FRI.

High, 8.1 feet (12.3 at 10.1 foot); low, 1.4 feet (1.7 at 1.1 foot).

## COLUMBIA RIVER REPORT.

NORTH HEAD, Oct. 15.—Condition of the bar at 5 P. M.: Sea, smooth; wind, 30 miles.

## MARCONI WIRELESS REPORTS.

All positions reported at 8 P. M., October 15, unless otherwise designated.

Drake, Seattle for San Francisco, 40 miles north of Columbia River.

Levey, Seattle for San Francisco, 15 miles north of Yaquina Head.

Ward, Portland for Seattle, 60 miles south of Cape Flattery.

Admiral Schley, San Francisco for Seattle, off Cape Flattery.

Queen, San Francisco for Seattle, 75 miles north of Yaquina Head.

Vacant, Portland for San Francisco, 423 miles north of San Francisco.

Honolulu, Honolulu for San Francisco, 1872 miles off October 14, at 8 P. M.

San Diego, Cal., Sept. 27, 1914. 513 miles from Cape Flattery, Oct. 13, at 8 P. M.

San Francisco, San Francisco for Honolulu, 442 miles south of San Francisco, Oct. 13, at 8 P. M.

San Francisco, San Francisco for Seattle, 16 miles north of San Francisco.

San Francisco, San Francisco for Seattle, 16 miles north of San Francisco.

San Francisco, San Francisco for Seattle, 16 miles north of San Francisco.

San Francisco, San Francisco for Seattle, 16 miles north of San Francisco.

San Francisco, San Francisco for Seattle, 16 miles north of San Francisco.

San Francisco, San Francisco for Seattle, 16 miles north of San Francisco.

San Francisco, San Francisco for Seattle, 16 miles north of San Francisco.

San Francisco, San Francisco for Seattle, 16 miles north of San Francisco.

San Francisco, San Francisco for Seattle, 16 miles north of San Francisco.

San Francisco, San Francisco for Seattle, 16 miles north of San Francisco.

San Francisco, San Francisco for Seattle, 16 miles north of San Francisco.

San Francisco, San Francisco for Seattle, 16 miles north of San Francisco.

San Francisco, San Francisco for Seattle, 16 miles north of San Francisco.

San Francisco, San Francisco for Seattle, 16 miles north of San Francisco.

San Francisco, San Francisco for Seattle, 16 miles north of San Francisco.

San Francisco, San Francisco for Seattle, 16 miles north of San Francisco.

San Francisco, San Francisco for Seattle, 16 miles north of San Francisco.

San Francisco, San Francisco for Seattle, 16 miles north of San Francisco.

San Francisco, San Francisco for Seattle, 16 miles north of San Francisco.

San Francisco, San Francisco for Seattle, 16 miles north of San Francisco.

San Francisco, San Francisco for Seattle, 16 miles north of San Francisco.

San Francisco, San Francisco for Seattle, 16 miles north of San Francisco.

San Francisco, San Francisco for Seattle, 16 miles north of San Francisco.

San Francisco, San Francisco for Seattle, 16 miles north of San Francisco.

San Francisco, San Francisco for Seattle, 16 miles north of San Francisco.

San Francisco, San Francisco for Seattle, 16 miles north of San Francisco.

San Francisco, San Francisco for Seattle, 16 miles north of San Francisco.

San Francisco, San Francisco for Seattle, 16 miles north of San Francisco.

San Francisco, San Francisco for Seattle, 16 miles north of San Francisco.

San Francisco, San Francisco for Seattle, 16 miles north of San Francisco.

San Francisco, San Francisco for Seattle, 16 miles north of San Francisco.

San Francisco, San Francisco for Seattle, 16 miles north of San Francisco.

San Francisco, San Francisco for Seattle, 16 miles north of San Francisco.

San Francisco, San Francisco for Seattle, 16 miles north of San Francisco.

San Francisco, San Francisco for Seattle, 16 miles north of San Francisco.

San Francisco, San Francisco for Seattle, 16 miles north of San Francisco.

San Francisco, San Francisco for Seattle, 16 miles north of San Francisco.