

The Whir-r-r of the Sewing Machine A Wonderful Sign of Thrift!

Women Who Sew in the Home
Outside of Portland

Should Heed This Sale!

FOR MAIL-ORDER PATRONS ONLY
We Offer a Limited Number of

Willamette 'D' Sewing Machines

at \$15.75

This Price Applies to Mail Orders Only



Women are now planning the Fall and Winter sewing and this is indeed a timely sale, bringing to women residing outside of Portland the famous Willamette "D" Sewing Machines for only \$15.75.

The design of the Machine is just as pictured on this page, and it has the popular drop head and is equipped with an excellent automatic lifting device for elevating the Sewing Head to position. Simply raise the lid of the Sewing Machine Case and the Machine Head comes to the proper sewing position, the top then extending out and acting as a table for the material to be sewed.

The design of this Machine is handsome and the finishing is a beautiful oak. Willamette "D" has a high arm, double lock-stitch Sewing Head, with many improvements. The stand is ball bearing and runs easily, quietly and swiftly. A complete set of attachments is shipped with each Machine, including Ruffler, Tucker, Binder, Braider, Four Hemmers of varying widths, Feller, Shirring Slide, Quilter, Cloth Guide, twelve assorted Needles, Six Bobbins, Two Screw Drivers, Filled Oil Can, and illustrated Book of Directions. These attachments are packed in compact case.

The Willamette "D" is a very reliable and durable family Sewing Machine—and only a limited number will be sold at this extremely low price of \$15.75. Mail your order today! Address Mail Order Department.

Willamette "D" Sewing Machines Guaranteed for Ten Years

A Binding Ten-Year Warranty With Every Willamette Machine—to Replace FREE OF CHARGE All Defective Parts, Excepting the Wear and Breakage of Needles and Shuttles.

Be Your Own Dressmaker

The "Queen" Adjustable Dress Form
Makes Home Dressmaking Easy

The "Queen" Adjustable Dress Form, No. 55, represents another epoch-making advance in the progressive development of adjustable Dress Forms.

One of the special features possessed by this Form is the hinged waist, which allows the independent adjustment of the hips and waists. Not only are these parts adjustable independently of each other, but each and every section of the hips may be changed without affecting other parts. In this way one hip may be changed without changing the other, and the front or back made full or flat as desired.

Another feature which makes this form very desirable is the special adjustment, which allows the bust part to be raised or lowered to correspond with any desired shape, or to meet the requirements of any change in fashion.

The skirt part embodies an entirely new patented method of construction which makes it practically indestructible, consisting of flat plated steel bands connected at the intersections by rivets which permit perfect freedom of motion in every part. This skirt will never wear out, and the flimsiest fabric may be used in making a skirt without fear of damage.

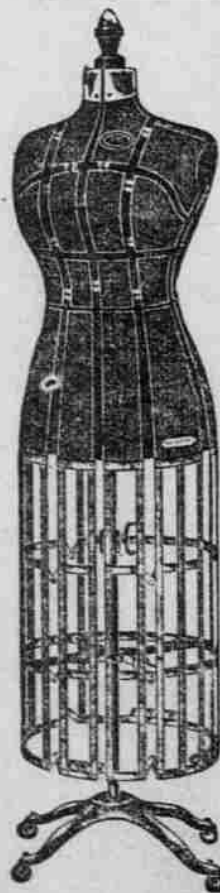
Each and every part of this Dress Form is adjustable independently of other parts, and any desired shape may be obtained, from a miss' figure to that of a woman of mature years.

Changes in fashion, no matter how radical, will not affect the usefulness of this form in the slightest degree, as the separate adjustments enable the user to change the relative proportions and shape at will. The purchase of a "Queen" Adjustable Dress Form is consequently an investment for a lifetime.

The range of adjustment is as follows:

	Closed	Open
Neck	12	16
Bust	32	46
Waist	23	34
Hips	35	52
Waist Length	13	15
Length Shoulder	5	6 3/4

\$20.00



WRITE TODAY FOR OUR FALL AND WINTER Mail Order Catalogue

Request Us to Enter Your Name on Our Mailing List
to Receive a Butterick Fashion Sheet Each Month Free!

Meier & Frank Co.

1857

1914

THE QUALITY STORE OF PORTLAND

Fifth, Sixth, Morrison, Alder Sts.