

Out-of-Town Patrons: Here Are Timely Sales for You

Mail Orders Received Within Three Days of This Date Will Be Filled at These Special Prices



SIXTH-STREET BUILDING.

Gaily Colored Ribbons Reduced Newest Fancies, Staples and Novelties UNDERPRICED FOR THIS SALE

10c-12c SATIN TAFFETA RIBBONS, YARD, 7c
No. 9 and No. 12 width. All the desired colors—Ribbons selected from our regular stocks.

PLAIN TAFFETA AND MOIRE RIBBON, 15c
Pure silk, 4 and 5 inches wide. Also fancy Silk Ribbons in light and dark color effects.

ROMAN STRIPE AND FANCY WARP PRINTS, YARD, 19c
Roman stripes in ten different color combinations. Warp Prints, light and dark effects. 4 1/2 inches wide.

35c-40c SATIN TAFFETA RIBBONS, YD., 20c
All pure silk—variety of colors. No. 80 and 100 width. Regular stock Ribbons.

FIFTY DIFFERENT PATTERN RIBBONS, 21c
Hairbow Ribbon, 6 inches wide, fancy and plain taffetas, Duchesse moire and fancy Ribbons of various styles—immense assortment.

\$1.25 LOVELY FANCY RIBBONS, YARD, 95c
Jacquard, Tapestry, new Maxixe and beautiful fancies—immense display of imported Ribbons in light and dark colors, 6 and 7-inch widths.

85c BLACK CHIFFON TAFFETA RIBBON, 59c
In 7 3/4-inch width. Also imported taffeta Ribbons of very high luster.

75c FANCY RIBBONS, YARD, 63c
Beautiful shades, ombre effects, in all desired colors—center of moire with wide satin edges. 6 1/2 inches wide.

85c-1 ROMAN STRIPED RIBBONS, YD., 75c
Imported Ribbons, in beautiful colorings, 7 and 8-inch widths. Very large variety to select from.

50c SATIN AND SATIN TAFFETA RIBBONS, YARD 33c
7 inches wide. 20 desirable colors—very fine quality satin and satin taffeta.

50c PANAMA MOIRE FAILE RIBBON, 35c
In 20 different colors, including the new Fall shades. 6 1/2-inch width Ribbon of superior quality.

25% Off on All Ribbons
selling regularly \$2.00 to \$12.00. New metallic, Velours, Novelties. Hundreds of pieces—your choice. **Less 25% Discount**

—First Floor, Sixth-St. Bldg.

MUNSINGWEAR for Men & Boys Sale and Showing of Fall and Winter Garments

SPECIALS
Men's \$1.25 "Munsing" Fleece Cotton Union Suits, 98c
Medium heavy weight, in ecru and gray color. High neck, long sleeves, ankle length and closed crotch. Reduced from \$1.25 to, suit, **98c.**

Men's \$2.50 "Munsing" Worst-Ed Cotton Union Suits, \$1.98
Medium heavy weight, in natural color only. High neck, long sleeves and ankle length. Regular \$2.50 garments reduced to, each, **\$1.98.**

Boys' 75c "Munsing" Fleece Cotton Union Suits, 59c
Medium weight fleeced cotton, gray only. High neck, long sleeves and ankle length. Sizes 6 to 14 years. Reduced for this sale from 75c to, garment, **59c**

—First Floor, Temporary Annex

Portland Agents "Butterick" Patterns

—Third Floor, Sixth-St. Bldg.



Famous "Munsingwear" For Women and Children

Showing of the New Fall Weights Many Lines at Reduced Prices

WOMEN'S "MUNSINGWEAR" COTTON UNION SUITS
Medium weight, high, low or Dutch neck. Knee and ankle length.
\$1.25 Regular Sizes, reduced to, garment, **\$1.15**
\$1.50 Extra Sizes, reduced to, garment, **\$1.35**

WOMEN'S "MUNSINGWEAR" WOOL AND SILK UNION SUITS
Dutch neck, elbow sleeves and ankle length.
Regular Sizes priced at, garment, **\$4.00**
Extra Sizes priced at, garment, **\$4.50**

WOMEN'S "MUNSINGWEAR" ALL-WOOL UNION SUITS
White and natural color. High neck, long sleeves, and ankle length.
Regular sizes only, priced at, garment, **\$3.50**

WOMEN'S "MUNSINGWEAR" WOOL AND COTTON UNION SUITS
White or natural. High or Dutch neck, long sleeves, ankle length.
Regular sizes priced, garment, **\$2.50**
Extra sizes priced, garment, **\$3.00**

WOMEN'S "MUNSINGWEAR" WOOL AND LISLE CLOTH UNION SUITS
Medium weight. Dutch, high or low neck, long, short or elbow sleeves or sleeveless. Knee and ankle length.
\$2.00 Regular sizes priced, garment **\$1.79**
\$2.50 Extra sizes priced, garment, **\$2.15**

WOMEN'S "MUNSINGWEAR" WOOL AND COTTON UNION SUITS
Heavy weight, in white and natural color. High neck, long sleeves and ankle length.
Regular sizes, garment, **\$1.75**
Extra sizes, garment, **\$2.00**

WOMEN'S "MUNSINGWEAR" FLEECE VESTS AND PANTS
Heavy fleeceline cotton, cream color only. High neck, long-sleeve Vests, ankle-length Pants.
65c Regular size garments, each, **55c**
75c Extra size garments, each, **63c**

CHILDREN'S 85c TO \$1 WOOL PANTS AND VESTS, 78c
2 for \$1.50. High neck, long sleeves, ankle length. In white and natural. All sizes.

WOMEN'S "MUNSINGWEAR" ALL-WOOL VESTS AND PANTS
White and natural. High neck, long-sleeved Vests, ankle-length Pants.
Regular sizes priced, each, **\$1.75**
Extra sizes priced, each, **\$2.00**

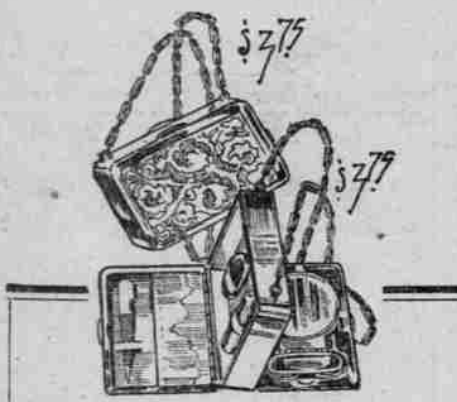
\$1.75 CHILDREN'S "MUNSING" WOOL UNION SUITS, \$1.59
White and natural. All sizes. High neck, long sleeves, ankle length and drop seat.

CHILDREN'S "MUNSING" FLEECE COTTON UNION SUITS
Heavy fleeceline cotton, in cream and natural color. High neck, long sleeves, ankle length and drop seat.
Sizes 1 to 9 years, garment, **75c**
Sizes 10 to 13 years, garment, **85c**

WOMEN'S "MUNSINGWEAR" WOOL AND COTTON VESTS AND PANTS
White and gray. High neck, long-sleeve Vests and ankle-length Pants.
\$1.25 Regular sizes, garment, **\$1.10**
\$1.50 Extra sizes, garment, **\$1.35**

—Second Floor, Sixth-St. Bldg.

See Alder-Street Window Display!



SIXTH-STREET BUILDING.

The New "Pandora Box"

Very Latest Party-Box
Novelty
Shown for the First Time
in Portland
Special Introductory
Price

\$3.75

These new Party Boxes are as attractive as their name. German silver, in two patterns, one engine turned effects, the others handsomely etched. The shape is a complete innovation, and the box is substantially built. Fitted with vinaigrette, pin-box, card attachment, nail file, coin holders, powder puff and mirror, in gilded effect, making a pleasing contrast. Carried on link chain. "Pandora Boxes" are sure to be extremely popular—be the first to have one! Very specially priced at **\$3.75**

—First Floor, Sixth-St. Bldg.

Rally to the South!

COTTON—the great industry of the "Sunny South," is calling every loyal American citizen to its standard. And assuredly no better spirit of patriotism could be evidenced at this time than to patronize this gigantic American industry, that has been deprived of its usual market through the great European conflagration.

The Cotton industry of the United States is of vital importance to this Nation's future greatness and our appreciation of that fact can best be demonstrated by the extent to which we all "Rally to the South."

Meier & Frank Co

TEMPORARY ANNEX.

Sale and Demonstration of "Wearever" Aluminum Ware

Temporary Annex—Third Floor.

"Wearever" Aluminum Kitchen Utensils are favored by all housewives. Their supreme wearing qualities and their absolute cleanliness are the secrets of their popularity.

DURING DEMONSTRATION SPECIAL PRICES PREVAIL. on four utensils of this unexcelled kitchen ware. Make your selections from the following list, and come in to our department and allow the expert demonstrator to tell you the advantages of

"WEAREVER" ALUMINUM WARE FOR KITCHEN USE.

80c "Wearever" Saucepans—just as illustrated. Tinned handles heavily riveted. 2 1/2-quart size. For this sale priced at **59c**

60c "Wearever" Stew Pans—in three-pint size. Substantially made and will not dent. Just as illustrated. Specially priced for this sale at **41c.**

Preserving Kettles
85c "Wearever" Preserving Kettles—just as illustrated. 2-quart size. Splendid aluminum kettles, not affected by acids, ideal for preserving uses. Special for this sale, each **59c.**

"Wearever" Covered Sauce Pans

\$1.15 "Wearever" Covered Sauce Pans—just as illustrated. Without joints, seams or soldered parts. 2 1/2-quart size. For this sale, each **79c.**

"Wearever" Teakettles, five-quart size, each	\$3.75
"Wearever" Teakettles, six-and-one-half-quart size, each	\$4.00
"Wearever" Teakettles, seven-and-one-half-quart size, each	\$4.50
"Wearever" Teapots, one-quart size, each	\$2.80
"Wearever" Teapots, one-and-one-half-quart size, each	\$2.80
"Wearever" Pie Pans, shallow, six-and-three-quarter-inch size, ea.	17c
"Wearever" Pie Pans, shallow, eight-and-five-eighths-inch size, ea.	25c
"Wearever" Pie Pans, shallow, ten-and-one-eighth-inch size, each	30c
"Wearever" Rice Boilers, one-quart size, each	\$1.55
"Wearever" Rice Boilers, two-quart size, each	\$2.00
"Wearever" Pudding Pans, one-quart size, each	40c
"Wearever" Pudding Pans, one-and-one-half-quart size, each	45c
"Wearever" Pudding Pans, two-quart size, each	50c
"Wearever" Pudding Pans, three-quart size, each	55c
"Wearever" Pudding Pans, four-quart size, each	65c

—Third Floor, Temporary Annex.

Dainty, New Undermuslins Specially Priced!

The Very Newest Ideas
Combining Daintiness, Simplicity and
Moderateness of Cost

HERE IN ABUNDANCE FOR YOUR SELECTION.

Come in today and inspect these new Undermuslins that we're placing at your disposal at these very special prices. Surprise and delight will be your reward—to say nothing of the extreme economy you may enjoy.

New Combinations of Fine Nainsook, Special 98c
Straight leg or knickerbocker style. Most attractively trimmed with dainty Swiss and hand-loom embroideries, or fine Swiss insertion and lace combined, with beading and ribbon at the waist line. A wonderful offering at this very special price—**98c.**

New Princess Combinations of Nainsook, Special \$1.98
Fine nainsook, made in attractive Princess style, entire yoke, back and front, of fine lace insertion. Finished at top with lace beading, ribbon-run. Specially priced at **\$1.98**

New Combinations—Straight Leg Style, Special \$1.98
Made of finest materials. Beautifully trimmed with lace, Swiss medallions, embroidery insets and lace insertion. A variety of attractive effects. Very special for this sale only, **\$1.98.**

New Nightgowns—Full Out—Special 98c.
Cambrie and Nainsook Gowns, 60 inches long, full width. High neck and long sleeve, with yokes of hemstitching and tucks combined with embroidery edges. Also Nainsook and Crepe Gowns in low-neck style, with trimmings of lace and embroidery. Very specially priced at **98c.**

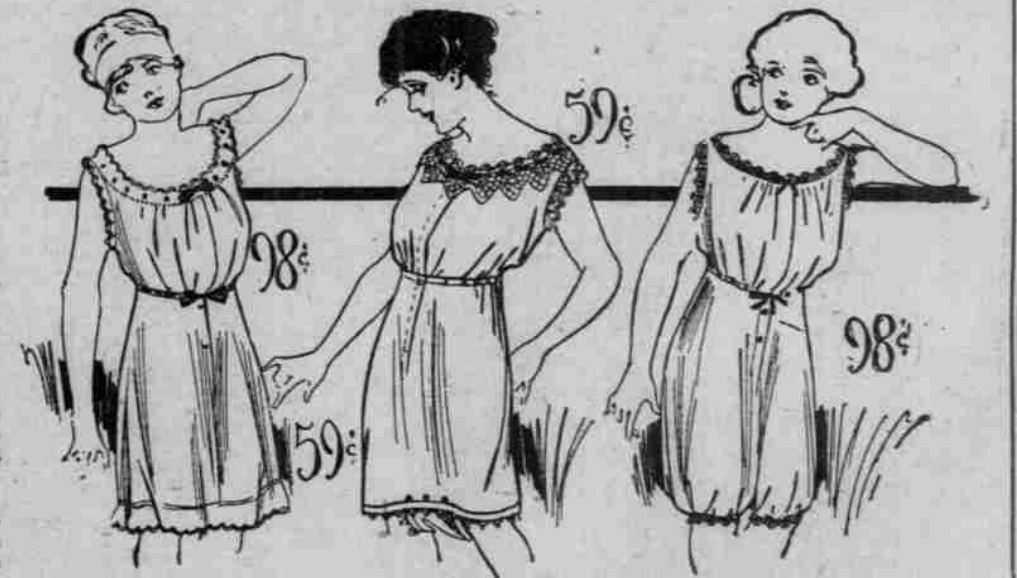
New Gowns of Nainsook and Batiste, Special \$1.98.
Two styles. One Empire with all-over lace yoke back and front. The other a simple gown, copied from a French model. Square neck, daintily tucked across the front, with ribbon run through casing and finished with smart ribbon bow. Regularly selling at \$2.98—reduced for this sale to only **\$1.98.**

Extra Size Garments Now at Special Prices

Extra Size Combinations—Prettily lace and embroidery trimmed. A variety of different styles. Sizes 46, 48 and 50. Specially priced at **98c to \$1.25.**

Extra Size Gowns—Crepe, Nainsook and Cambrie. High and low necks. The simplest to the most elaborate models. Priced **\$1.25, \$1.59, \$1.98 to \$4.50.**

Extra Size Drawers—Made of Soft Nainsook. Straight leg style. Complete assortment. Some trimmed with Swiss embroidery, some with lace and Swiss medallions. Prices **59c, 79c, 98c.**



New Envelope Drawers, Very Special 59c.
Made of soft Nainsook in the new envelope style. Elastic at waist line, and trimmed with dainty patterned embroidery. For this sale only, priced **59c.**

New Corset Covers of Fine Nainsook, 59c.
One style trimmed back and front with fine Swiss embroidery and lace medallions. Another made in surplus style, with elastic at waist line—prettily trimmed. Special for this sale, **59c.**

New Reinforced Bloomers of Nainsook, 59c.
In pink, blue or white. Strongly reinforced at seat. Made with elastic at waist line and knee. Very special at **59c.**

Women's Drawers of Nainsook, Special 39c
Very good quality material. Prettily trimmed with lace, embroidery and hemstitched tucks. Specially priced at **39c.**

The New French Undermuslins HAVE ARRIVED

We announce the arrival of our complete assortment of dainty French Undermuslins, a collection that is the loveliest it has ever been our fortune to see gathered together in one group. Many novelties—and handwork of the most delicate character on sheer materials. New designs, new models, and a bevy of new ideas in French Undermuslins await your selection here.

—Second Floor—Sixth-St. Bldg.

Grocery Specials for Tuesday

Royal Banquet Flour—Milled for us specially from the best Blue-stem Wheat. Makes splendid bread, cakes and pastry. Sack **\$1.35**

Golden Pumpkin—Solid pack No. 2 1/2 cans, dozen **\$1.10**; can **10c**

Victor Butter—Satisfactory brand. Roll, each, pound **67c**

Cottage Hams—Solid pieces, about 4 lbs. each, pound **17 1/2c**

White Asparagus—Peak brand. Round cans, dozen **\$1.40**, can **12 1/2c**

Lima Beans—California dried, 3 pounds for **25c**

Pure Lard—No. 10 pails, **\$1.39**, No. 5 pails **70c**

Shredded Coconut—Schep's long white threads. Pound **17 1/2c**

Condensed Milk—Sunrise brand. Dozen cans **85c**, can **7 1/2c**

German Lentils—Best quality. Pound **10c**

Japan Tea—Victor 50c grade. Pound **39c**

—Pure Food Grocery, Basement, Sixth-St. Building.

Meier & Frank Co.
1807 1814
THE QUALITY STORE OF PORTLAND
Fifth, Sixth, Morrison, Alder Sts.