

TRADE BACKS SHOW WITH CASH OFFERS

Guarantee Campaign Meets Hearty Support of All Portland Merchants.

FLOOR SPACE IN DEMAND

Suggestion as to Management of Exhibits and Claims Made by Farmers Given in Letters From Various Friends.

The campaign to raise funds on a guarantee list for the Manufacturers and Land Products Show, which is to be held in Portland from October 26 to November 14 was successfully inaugurated yesterday, starting from the Commercial Club at 1 o'clock.

The president, David M. Dunne, received word from the assistant secretary of the Chamber of Commerce yesterday that that organization had unanimously endorsed the Manufacturers and Land Products Show.

The effort of President Dunne and Chairman A. P. Bateham, of the Land products department, to improve the judging and regulating the grading and style of exhibits of land products, especially of the fruits, by means of exhibitions of the last Portland Land Show and also from many leading agriculturists and horticulturists of Oregon, Idaho and Washington, is meeting with favor.

As an indication of this, M. M. Burdett, of Dufur, Or., writes that he was an exhibitor in 1912 and hoped that the land show would become a permanent acquisition annually to Portland.

He questions whether every farmer is really an "honest farmer" about fair and show time as far as the exhibitor is concerned.

Another suggestion of great importance was that, in the potato exhibit, instead of ten varieties to be exhibited for ten boxes, he be allowed more than two varieties.

The demand for exhibit space in the manufacturers' department still continues unabated. Now it looks as though within a week all space will be given.

First and second winners in all of the different classes in the apple show feature of the Lane Show will be given \$500 and \$250 respectively.

NEW STORIES IN FILMS

PEOPLES, MAJESTIC, COLUMBIA, STAR AND GLOBE OFFER MILLS.

Movies Range From Tales of Love to Educational and Moral Lessons Presented on Screens.

YESTERDAY, at the People's Theater, Daniel Frohman presented one of the most notable film productions which have been made by the Famous Players Film Company.

Mary Pickford, the world's foremost film star, is seen in the play, based on the novel by Alice Chapin, "The Eagle's Mate."

Mrs. Pickford plays the role of Anemone Breckenridge, a young girl from a nearby valley who has been abandoned by her father.

This is absolutely a supreme production and should not be missed by the movie fans.

Majestic.

A SHOWGIRL, in desperate circumstances, took the money given her by a wealthy young clubman and sent it to her mother.

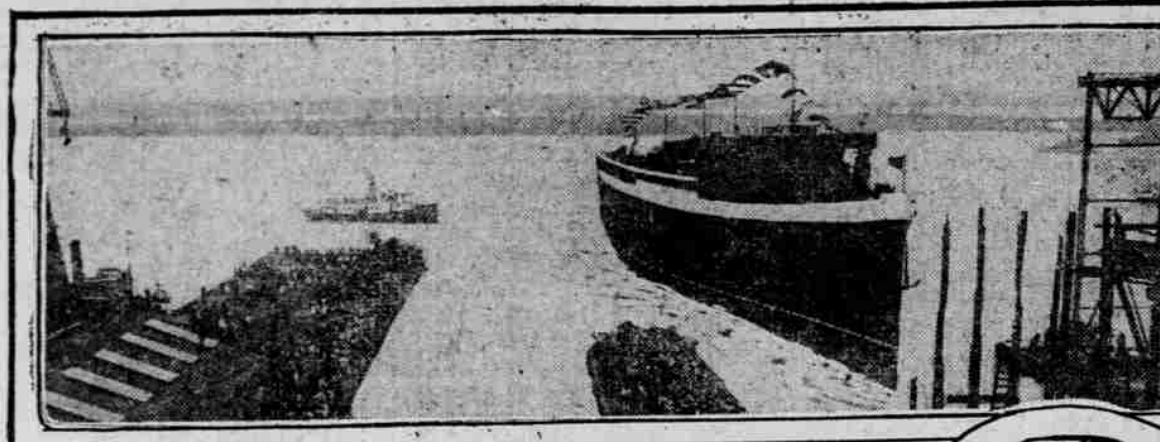
The Hearst-Selig News Pictorial, depicting current events of interest, concluded the programme.

Mrs. Oblick selects some of her favorite song selections.

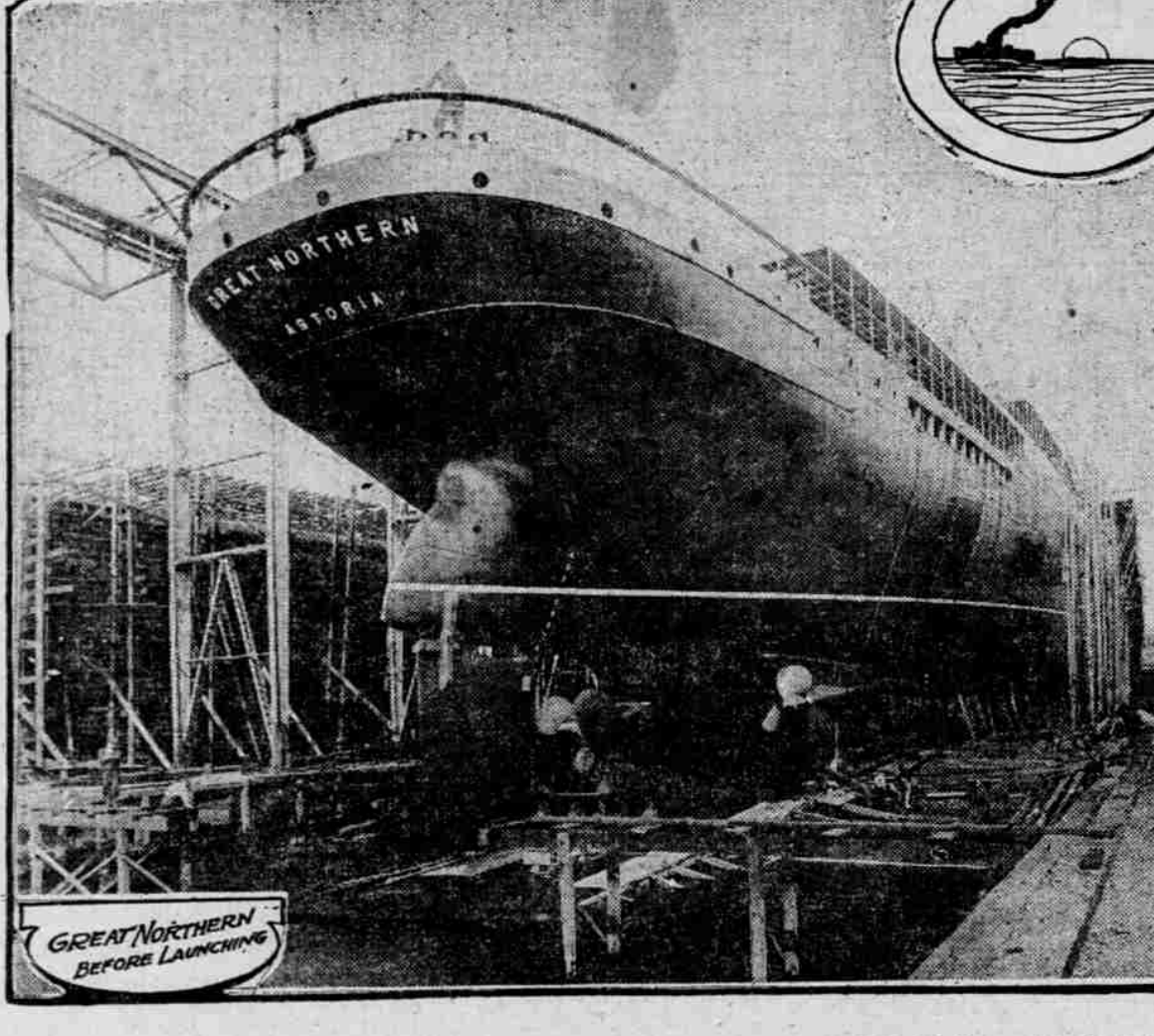
Star.

A POWERFUL story of sin and its retribution is "Snowdrift," a play in two parts which is the feature

VESSEL FOR ASTORIA-SAN FRANCISCO RUN WILL BE ONE OF FASTEST AFLOAT.



LAUGHING OF GREAT NORTHERN



The steamer Great Northern, which was launched at Cramp's Shipyard in Philadelphia on July 7, is one of the two big passenger vessels which the Hill interests will put on the Astoria-San Francisco run next year.

The steamer Great Northern, which was launched at Cramp's Shipyard in Philadelphia on July 7, is one of the two big passenger vessels which the Hill interests will put on the Astoria-San Francisco run next year.

The steamer Great Northern, which was launched at Cramp's Shipyard in Philadelphia on July 7, is one of the two big passenger vessels which the Hill interests will put on the Astoria-San Francisco run next year.

The steamer Great Northern, which was launched at Cramp's Shipyard in Philadelphia on July 7, is one of the two big passenger vessels which the Hill interests will put on the Astoria-San Francisco run next year.

The steamer Great Northern, which was launched at Cramp's Shipyard in Philadelphia on July 7, is one of the two big passenger vessels which the Hill interests will put on the Astoria-San Francisco run next year.

The steamer Great Northern, which was launched at Cramp's Shipyard in Philadelphia on July 7, is one of the two big passenger vessels which the Hill interests will put on the Astoria-San Francisco run next year.

The steamer Great Northern, which was launched at Cramp's Shipyard in Philadelphia on July 7, is one of the two big passenger vessels which the Hill interests will put on the Astoria-San Francisco run next year.

The steamer Great Northern, which was launched at Cramp's Shipyard in Philadelphia on July 7, is one of the two big passenger vessels which the Hill interests will put on the Astoria-San Francisco run next year.

The steamer Great Northern, which was launched at Cramp's Shipyard in Philadelphia on July 7, is one of the two big passenger vessels which the Hill interests will put on the Astoria-San Francisco run next year.

The steamer Great Northern, which was launched at Cramp's Shipyard in Philadelphia on July 7, is one of the two big passenger vessels which the Hill interests will put on the Astoria-San Francisco run next year.

The steamer Great Northern, which was launched at Cramp's Shipyard in Philadelphia on July 7, is one of the two big passenger vessels which the Hill interests will put on the Astoria-San Francisco run next year.

The steamer Great Northern, which was launched at Cramp's Shipyard in Philadelphia on July 7, is one of the two big passenger vessels which the Hill interests will put on the Astoria-San Francisco run next year.

The steamer Great Northern, which was launched at Cramp's Shipyard in Philadelphia on July 7, is one of the two big passenger vessels which the Hill interests will put on the Astoria-San Francisco run next year.

The steamer Great Northern, which was launched at Cramp's Shipyard in Philadelphia on July 7, is one of the two big passenger vessels which the Hill interests will put on the Astoria-San Francisco run next year.

The steamer Great Northern, which was launched at Cramp's Shipyard in Philadelphia on July 7, is one of the two big passenger vessels which the Hill interests will put on the Astoria-San Francisco run next year.

The steamer Great Northern, which was launched at Cramp's Shipyard in Philadelphia on July 7, is one of the two big passenger vessels which the Hill interests will put on the Astoria-San Francisco run next year.

The steamer Great Northern, which was launched at Cramp's Shipyard in Philadelphia on July 7, is one of the two big passenger vessels which the Hill interests will put on the Astoria-San Francisco run next year.

The steamer Great Northern, which was launched at Cramp's Shipyard in Philadelphia on July 7, is one of the two big passenger vessels which the Hill interests will put on the Astoria-San Francisco run next year.

ROCK ISLAND MADE

Arrangements Being Effected to Handle Grain Shipments.

PROBLEM THOUGHT SOLVED

Effort Will Be Made to Divert General Goods to Ainsworth, Leaving Albina Exclusively for Receiving and Loading Crop.

One step practically decided on as a means of placing more space at the disposal of grain exporters to overcome the lack of storage due to the destruction of Oceanic, Montgomery and Columbia docks, is to divert most of the general shipments now handled at Albina dock to Ainsworth dock, so the former may be used for grain-moving from the inland.

Estimates of the 1914 crop place it at approximately 65,000,000 bushels, and at least 30,000,000 bushels are expected to reach tidewater at Portland, some for export and for shipment to California, with a considerable percentage for milling purposes and home consumption.

As the three docks burned since Spring were utilized wholly for grain, their loss offers a problem in providing sufficient storage for the cereal that will be moved within the next few months from the harvesting centers.

A committee visited Irving, Montgomery No. 1, and the North Bank docks yesterday to make a complete check on the capacity of all, and it is hoped to visit others on the waterfront, so a report will be ready tomorrow.

Information is available as to the number of square feet of surface, it was deemed important that wharf managers be interviewed to ascertain how high stacks were piled and whether they could be increased so as to care for a part of the overflow.

In the party were Peter Kerr, of Kerr, Gifford & Co.; D. W. L. MacGregor, of Balfour, Guthrie & Co.; G. H. Houser, G. B. Hegardt, chief engineer of the Commission of Public Docks; Chief Engineer Lupton, of the Spokane, Portland & Seattle, and R. M. Hopkins, of the O-W. R. & N. engineering department.

HONOLULU SERVICE PROBABLE

Large Amount of Tonnage in Prospect if Early Start is Made.

Sufficient trade is in sight to warrant the operation of three steamers Honolulu and return by way of San Pedro and San Francisco, according to N. P. Titus, of the Hawaiian metropolis.

The general plan includes the establishment of a sugar refinery here for handling the raw product from the Hawaiian, which manufacturers of syrup from there in quantity and canned pineapples would be available for shipment to San Francisco as well as to Seattle and Portland.

MANZANITA TO GET WIRELESS

Bureau of Lightships Will Equip Two Tenders on Coast.

Authority is looked for shortly to equip two lightship tenders on the Pacific Coast with wireless and one of them will be the Manzanita, operating in the Seventeenth Lighthouse District.

The lightship tender Manzanita is to be equipped with wireless and one of them will be the Manzanita, operating in the Seventeenth Lighthouse District.

The lightship tender Manzanita is to be equipped with wireless and one of them will be the Manzanita, operating in the Seventeenth Lighthouse District.

The lightship tender Manzanita is to be equipped with wireless and one of them will be the Manzanita, operating in the Seventeenth Lighthouse District.

The lightship tender Manzanita is to be equipped with wireless and one of them will be the Manzanita, operating in the Seventeenth Lighthouse District.

The lightship tender Manzanita is to be equipped with wireless and one of them will be the Manzanita, operating in the Seventeenth Lighthouse District.

The lightship tender Manzanita is to be equipped with wireless and one of them will be the Manzanita, operating in the Seventeenth Lighthouse District.

The lightship tender Manzanita is to be equipped with wireless and one of them will be the Manzanita, operating in the Seventeenth Lighthouse District.

The lightship tender Manzanita is to be equipped with wireless and one of them will be the Manzanita, operating in the Seventeenth Lighthouse District.

The lightship tender Manzanita is to be equipped with wireless and one of them will be the Manzanita, operating in the Seventeenth Lighthouse District.

The lightship tender Manzanita is to be equipped with wireless and one of them will be the Manzanita, operating in the Seventeenth Lighthouse District.

The lightship tender Manzanita is to be equipped with wireless and one of them will be the Manzanita, operating in the Seventeenth Lighthouse District.

The lightship tender Manzanita is to be equipped with wireless and one of them will be the Manzanita, operating in the Seventeenth Lighthouse District.

The lightship tender Manzanita is to be equipped with wireless and one of them will be the Manzanita, operating in the Seventeenth Lighthouse District.

The lightship tender Manzanita is to be equipped with wireless and one of them will be the Manzanita, operating in the Seventeenth Lighthouse District.

How to Get Rid of Eczema

Your Blood Must Be Right if Skin is to Heal



Impurities Will Come Out Some Working outwardly through a myriad of very small blood vessels, the famous blood purifier, S. S. S., acts on the skin material for its regeneration.

Working outwardly through a myriad of very small blood vessels, the famous blood purifier, S. S. S., acts on the skin material for its regeneration.

Working outwardly through a myriad of very small blood vessels, the famous blood purifier, S. S. S., acts on the skin material for its regeneration.

Working outwardly through a myriad of very small blood vessels, the famous blood purifier, S. S. S., acts on the skin material for its regeneration.

Working outwardly through a myriad of very small blood vessels, the famous blood purifier, S. S. S., acts on the skin material for its regeneration.

Working outwardly through a myriad of very small blood vessels, the famous blood purifier, S. S. S., acts on the skin material for its regeneration.

Working outwardly through a myriad of very small blood vessels, the famous blood purifier, S. S. S., acts on the skin material for its regeneration.

Working outwardly through a myriad of very small blood vessels, the famous blood purifier, S. S. S., acts on the skin material for its regeneration.

Working outwardly through a myriad of very small blood vessels, the famous blood purifier, S. S. S., acts on the skin material for its regeneration.

Working outwardly through a myriad of very small blood vessels, the famous blood purifier, S. S. S., acts on the skin material for its regeneration.

Working outwardly through a myriad of very small blood vessels, the famous blood purifier, S. S. S., acts on the skin material for its regeneration.

Working outwardly through a myriad of very small blood vessels, the famous blood purifier, S. S. S., acts on the skin material for its regeneration.

Working outwardly through a myriad of very small blood vessels, the famous blood purifier, S. S. S., acts on the skin material for its regeneration.

Working outwardly through a myriad of very small blood vessels, the famous blood purifier, S. S. S., acts on the skin material for its regeneration.

Working outwardly through a myriad of very small blood vessels, the famous blood purifier, S. S. S., acts on the skin material for its regeneration.

Working outwardly through a myriad of very small blood vessels, the famous blood purifier, S. S. S., acts on the skin material for its regeneration.

Working outwardly through a myriad of very small blood vessels, the famous blood purifier, S. S. S., acts on the skin material for its regeneration.

Working outwardly through a myriad of very small blood vessels, the famous blood purifier, S. S. S., acts on the skin material for its regeneration.

Working outwardly through a myriad of very small blood vessels, the famous blood purifier, S. S. S., acts on the skin material for its regeneration.

Working outwardly through a myriad of very small blood vessels, the famous blood purifier, S. S. S., acts on the skin material for its regeneration.

Working outwardly through a myriad of very small blood vessels, the famous blood purifier, S. S. S., acts on the skin material for its regeneration.

Working outwardly through a myriad of very small blood vessels, the famous blood purifier, S. S. S., acts on the skin material for its regeneration.

Working outwardly through a myriad of very small blood vessels, the famous blood purifier, S. S. S., acts on the skin material for its regeneration.

Working outwardly through a myriad of very small blood vessels, the famous blood purifier, S. S. S., acts on the skin material for its regeneration.

Working outwardly through a myriad of very small blood vessels, the famous blood purifier, S. S. S., acts on the skin material for its regeneration.

Working outwardly through a myriad of very small blood vessels, the famous blood purifier, S. S. S., acts on the skin material for its regeneration.

Working outwardly through a myriad of very small blood vessels, the famous blood purifier, S. S. S., acts on the skin material for its regeneration.

Rock Island

LOW RATES EAST

Via ROCK ISLAND LINES

September 30 Inclusive

Return Limit October 31, 1914.

The Route of the De Luxe Rocky Mountain Limited

Unexcelled Dining Car Service

By purchasing your ticket at our office you have choice of any line out of Portland.

Special attention to women and children traveling alone.

Tickets, Reservations, Information, Etc.

M. J. GEARY, General Agent, Pass, Dept. 111 Third Street, Portland, Or. Phone, Main 254, A 2680

A NURSE TAKES DOCTOR'S ADVICE

And is Restored to Health by Lydia E. Pinkham's Vegetable Compound.

Euphemia, Ohio.—"Because of total ignorance of how to care for myself when verging into womanhood, and from taking cold when going to school, I suffered from a displacement, and each month I had severe pains and nausea which always meant a lay-off from work for two to four days from the time I was 16 years old.

"I went to Kansas to live with my sister and while there a doctor told me of the Pinkham remedies but I did not use them then as my faith in patent medicines was limited. After my sister died I came home to Ohio to live and that has been my home for the last 18 years.

"The Change of Life came when I was 47 years old and about this time I saw my physical condition plainly described in one of your advertisements. Then I began using Lydia E. Pinkham's Vegetable Compound and I cannot tell you or any one the relief it gave me in the first three months. It put me right where I need not lay off every month and during the last 18 years I have not paid out two dollars for doctor and have been blessed with excellent health for a woman of my age and I can thank Lydia E. Pinkham's Vegetable Compound for it.

"Since the Change of Life is over I have been a maternity nurse and being wholly self-supporting I cannot over estimate the value of good health. I have now earned a comfortable little home just by sewing and nursing. I have recommended the Compound to many with good results, as it is excellent to take before and after childbirth."—MISS EVELYN ADELIA STEWART, Euphemia, Ohio.

If you want special advice write to Lydia E. Pinkham Medicine Co. (confidential) Lynn, Mass. Your letter will be opened, read and answered by a woman and held in strict confidence.

SPECIAL LOW FARES TO ALL POINTS EAST VIA CANADIAN PACIFIC RAILWAY

EXCURSION FARES EAST

THE TRUE SCENIC ROUTE

During the Summer Season low round-trip rates will be made to the principal destinations. A few of the points quoted are:

Table with columns for destination and fare. Destinations include Minneapolis, St. Paul, Chicago, St. Louis, Indianapolis, Detroit, New York, Philadelphia, Pittsburgh, Boston, Portland, Me., Ottawa, Ont., Montreal.

SALE DATES: June 1 to September 30. Stopovers Going and Returning. Final Return Limit October 31, 1914. Have your tickets ready to pay out two dollars and address Rock Is. Your itinerary should include stops at Bangor, Glacier, Watkins Lake, Lake Umbagog and other resorts.

4 TRANSCONTINENTAL TRAINS DAILY

For descriptive Matter and Further Particulars Apply at the Third and Pine or Address FRANK R. JOHNSON, General Agent, Portland, Oregon.

"Rheumatism No More"

Compound by Lydia E. Pinkham, St. Louis, Mo. For sale by all druggists.