

NEW GAS RATES AFFECT PORTLAND

Greater Efficiency of Service State Railroad Commission's Aim in Making Changes.

COMPLAINTS CAUSE ACT

Monthly Average Total Heating Value of 600 British Thermal Units Cubic Foot Is Requirement for All Companies.

SALEM, Or., June 4.—(Special.)—Announcement of new rules adopted by the State Railroad Commission will result, it is believed, in the Portland Gas Company and companies furnishing gas in other cities giving much better service. The rules were adopted after the Commissioners had made an investigation of conditions in the metropolises and elsewhere.

The rules state in part: "Every gas utility must supply gas which shall have a monthly average total heating value of not less than 600 British thermal units per cubic foot, as referred to the standard conditions of temperature and pressure when tested at a point within a radius of one mile of the manufacturing works, and also in case the gas is manufactured outside the city, when tested at any point within the city near the center of consumption."

Minimum Average Stated. "The total heating value of the gas at any such points shall never fall below 550 British thermal units per cubic foot; provided, that for the period of six months after the taking effect of these rules, unless the Commission shall otherwise order, the minimum monthly average required shall be 550 British thermal units, and the minimum at any time shall not fall below 525 British thermal units per cubic foot."

"In obtaining the monthly average, the results of all tests of heating value made on any day during the calendar month shall be averaged and the average of all such daily averages obtained therefrom."

It has been alleged that the gas furnished in Portland has nothing like an average total heating value of 600 British thermal units per cubic foot, and as a result, many complaints have been made to the Commission.

Provision is made that every gas meter, whether new, repaired, or removed from service for any cause, shall be adjusted to be correct within 1 percent when passing gas at six cubic feet an hour, according to rated light capacity, before being installed for use of any customer.

Meter Test Fees Announced. A provision is made that all meters must be tested within a specified period from the time of installation. The pressure of gas as measured at the outlet of the service pipe to any customer shall never be less than equivalent to two inches of water pressure, and shall never be greater than equivalent to six inches of water pressure unless the customer agrees in writing to a different pressure.

Fees for meter tests made by the Commission are as follows: For each gas service meter not exceeding 10 lights capacity, \$2; not exceeding 40 lights capacity, \$3; for each continuous current meter having a voltage rating of not exceeding 250 volts and a current capacity not exceeding 25 amperes, \$3; for other electrical meters having a capacity not exceeding 100 amperes, \$4; for all other electricity meters, \$5.

HINDUS' PLEA ANSWERED

Detained Immigrants Have Two Years' Supplies, Says Agent. VANCOUVER, B. C., June 4.—(Special.)—Aberdeen will be advertised at the Panama-Pacific Exposition in San Francisco next year by the erection, in front of the Washington state building, of a 150-foot flagpole, similar to that erected by Chehalis County at the Alaska-Yukon Exposition at Seattle in 1909.

150-FOOT POLE PLANNED

Aberdeen Hopes to Get Publicity at San Francisco Fair. ABERDEEN, Wash., June 4.—(Special.)—Aberdeen will be advertised at the Panama-Pacific Exposition in San Francisco next year by the erection, in front of the Washington state building, of a 150-foot flagpole, similar to that erected by Chehalis County at the Alaska-Yukon Exposition at Seattle in 1909.

PICKPOCKETS GET MONEY

One Man Loses \$120 and Another \$150 Diamond at Flavel. ASTORIA, Or., June 4.—(Special.)—Pickpockets were busy among the crowds during the celebration at Flavel yesterday, and several persons had their pockets picked or lost articles of jewelry.

LABOR SYMPATHIZER WHO IS REFUSED ENTRY TO CANADA BY IMMIGRATION OFFICIALS.



"MOTHER" JONES.

CANADIAN BAR IS UP

Mother Jones Prevented From Going to Strike Scene.

WASHINGTON APPEAL MADE

Dejected in Plan to Address Strikers at Nainaimo, Labor Sympathizer Says She Will Return to Colorado From Seattle.

SEATTLE, Wash., June 4.—"Mother" Mary Jones, who was prevented by a Canadian immigration official from boarding a steamer for Vancouver, B. C., today, announced tonight that she would leave for Denver tomorrow. She said she would continue her work in connection with the Colorado coal strike pending action on her appeal to Secretary of Labor Wilson to obtain consent from the Canadian government for her to go to Nainaimo, B. C., to address members of the United Mine Workers of America, who have been on strike several months.

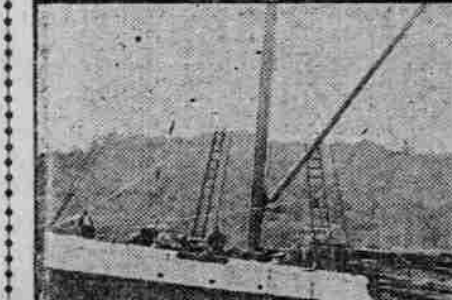
"Mother" Jones, who had purchased a ticket to Vancouver, presented herself at the gangplank of the steamer and was subjected to the usual questioning by a Canadian immigration inspector. Asked if she was an American citizen, she replied:

"Yes, an proud of it." She gave Ireland as her birthplace. The inspector looked at her ticket and said, according to Mrs. Jones: "You're not going to Vancouver. You're going to Nainaimo to kick up a disturbance among the miners, and you can't do that." Mrs. Jones said she was obliged to step aside. Frank Farrington, member of the International executive board of the United Mine Workers of America, who had been acting as representative of the board in the Vancouver Island strike district for two years, at once sent the following dispatch to Secretary of Labor Wilson, in Washington:

SIX DIVORCED AT ROSEBURG

In Each Case Plea Is Desertion; One Defendant Portland Banker. ROSEBURG, Or., June 4.—Six divorces were granted by Judge Hamilton in the Circuit Court here today.

SCHOONER CARRIES OREGON PINE TO CALIFORNIA PORTS.



BANDON PLYING FROM TOLEDO.

TOLEDO, Or., June 4.—(Special.)—The steam schooner Bandon left Toledo for San Francisco with 600,000 feet of Lincoln County product. The boat draws 14 1/2 feet, loaded, and has plenty of water clearance. A deckload 15 feet high of solid lumber is carried. This picture was taken as the vessel was about 500 feet away from the wharf.

CLASH APPEARS LIKELY

SPOKANE REPUBLICANS TO PASS ON CONVENTION PLAN.

Proposal to Supplement Primary System Made by Judge Zent Promotes to Meet Strong Opposition.

SPOKANE, Wash., June 4.—(Special.)—Prospects are that a lively fight will develop in the Republican county convention to be held at the Courthouse Saturday over the proposal made some time ago by Judge W. W. Zent, Republican county chairman, to hold an advisory county convention to nominate candidates and supplement the primary system.

Several Republicans who do not believe that Judge Zent's proposal should be put into effect are preparing to oppose it by a resolution in convention and by instructing the delegates to the county convention to vote against the plan.

Judge Zent said some time ago that he would put the scheme before the county convention and either obtain permission to hold the advisory convention or have a plank inserted in the county platform asking for an amendment of the direct primary law, which he strongly criticizes.

GRADUATE LISTS SWELL

Lewis County Eighth Grades to Have Largest Number on Record.

CENTRALIA, Wash., June 4.—(Special.)—There were more eighth grade graduates in Lewis County this year than ever before.

CARS STOP FOR FUNERAL

Traffic on Lines of Dead President Held for Two Minutes. SEATTLE, Wash., June 4.—All the streets in the Puget Sound Territory, Light & Power Company stopped for two minutes, beginning at 8 o'clock this afternoon, simultaneously with the beginning of the Masonic funeral cere-

Chehalis Settlers Remembered.

CHEHALIS, Wash., June 4.—(Special.)—The management of the Southwest Washington Fair is planning to set aside a special day for old settlers and soldiers at the fair this year.

Chehalis Settlers Remembered.

CHEHALIS, Wash., June 4.—(Special.)—The management of the Southwest Washington Fair is planning to set aside a special day for old settlers and soldiers at the fair this year.

"TIS rose-time and June-time--dine at The Portland and 'twill be "good-time!"

Table d'hote dinner is served every evening from 5:30 to 8 in the cozy dining-room; \$1.00 week-days; \$1.25 Sundays.

A fine noon luncheon is served weekdays from 11:30 to 2.

Hear the orchestra play in the open courtyard these Summer evenings.

The Portland Hotel G. J. Kaufmann, Manager

scribed to place 350 feet of hitching posts and watering troughs at various points in the north end. At present all the posts are in the heart of the business district and the North End merchants have taken this step to turn some of the farmers' trade to that section of the city.

IN former days the lawyer wore a gown of a characteristic cut; people knew he was a lawyer by the clothes he wore. Nowadays the lawyer or doctor wears simply good looking clothes; you can't tell by his dress what he is—banker, business man, professional man.

Hart Schaffner & Marx clothes are for all of these classes; special new weaves and patterns so varied that all tastes and callings can be suited; correct sizes for every figure.

Sam'l Rosenblatt & Co. The Men's Shop for Quality and Service Northwest Corner Third and Morrison We show special values at \$25

Advertisement for Sam'l Rosenblatt & Co. featuring a man in a suit and the text "Watch the 'THIRD STREETERS' on the Great Light Way Saturday Night June 6". It also includes a list of prices: \$18, \$20, \$25, \$30, \$35, \$40 and a note "We show special values at \$25".

WORLD'S BEST SAMPLE SHOES

Factory lots and countermands, which we can sell to you at less than FACTORY PRICES. Come here to the big store for your Shoes. Twenty-five salesmen at your service.

Mary Jane Pumps Now 98c Pair

The Most Popular Shoes in the Market Get Them Now Children's, sizes 5 to 8, at the pair, 98c Misses', sizes 1 1/2 to 2, pair, \$1.75 Children's, sizes 8 to 11, pair, \$1.48 Ladies', sizes 2 1/2 to 7, at, the pair, \$1.98

Boys' Shoes at 98c, \$1.48, \$1.98

Ladies' \$3.00 and \$3.50 Dress Shoes and Oxfords \$1.98

Misses' Shoes and Pumps \$1.98

Ladies' \$3 Colonials on Sale Now at \$1.98

Children's Shoes, Pumps \$1.98

Standard Makes of Men's Shoes at \$2.50

Men's "Burt and Packard" and Oxfords, pair, \$2.50

Knight's SAMPLE SHOE SHOP

244 Washington Street, Between Second and Third

Great Northern Railway SUMMER EXCURSIONS TO THE EAST AND RETURN TICKETS ON SALE DAILY June 1st to September 30th. Includes a list of cities and prices: New York \$108.50, Philadelphia 105.50, Buffalo 92.50, Detroit 85.50, St. Louis 79.00, Boston \$110.00, Washington, D.C. 107.50, Pittsburgh, Pa. 72.50, Chicago 75.50, Denver 55.00, St. Paul, Minneapolis, Duluth, Winnipeg, Kansas City, Omaha and St. Joseph, \$60. Corresponding Reductions to Other Points. Oriental Limited. Through standard and tourist sleeping cars to Chicago in 72 hours, making direct connections for all points East. Unsurpassed dining-car service. Compartment-observation cars.