

ROAD PUSHES INTO SUTHERLIN WOODS

Iowa Capitalists to Build Line to Reach Timber Holdings Near Place.

ORCHARDS ARE PLENTIFUL

Trees About Ready to Bear Heavy Crops of Fruit Are Found in Valley of Well-Kept Farms and Substantial Homes.

BY ADDISON BERNETT. SUTHERLIN, Or., May 28.—(Special.) Of all the small valleys in the State of Oregon, the Sutherlin Valley is the most peculiar, one of the most beautiful and one day, not far distant, destined to be one of the most productive and most prosperous.

You might say that this valley runs eastward from the Umpqua River for a distance of 13 or 14 miles; but in reality the western end of it is called Cole's Valley, which runs the main valley of Sutherlin, some four or five miles.

Old Homestead in Use. Sutherlin Creek rises also in the Cascades and flows into the same valley from the southeast, and continues along the southerly side of the valley until it gets almost to Sutherlin and then it also enters the main valley and flows south, around past the old home of the late Judge Deady and on down westerly into the Umpqua.

Irrigation Is Natural. The Lord made the Sutherlin Valley, must have made it, as a model irrigation enterprise. Many people laugh at the idea of irrigating where the precipitation is much in excess of 20 inches.

Fresh Goods Preserved. The land owners have almost as a unit put up fine residences and fine outbuildings, which are all well and tastefully painted—and every one has a good lawn with flowers and shrubbery in abundance.

What will it mean to Sutherlin to have a pay roll of \$1,000,000 a year? What will it mean when the orchards come into bearing, when the Everfresh Company pays out \$200,000 or \$300,000 a year for class B and class C fruits and all the class A fruits are sold at good figures?

More Surveys Recommended. Besides the appropriations outlined, the committee on commerce has recommended additional surveys; Clatskanie River from the mouth of the City of Clatskanie, Oregon; Columbia and Snake Rivers, Washington and Idaho, from Cello Falls to Pittsburg Landing, Idaho; Columbia River from Camas to Lady's Island.

Wapato Holds Celebration. WAPATO, Wash., May 28.—(Special.)—Wapato celebrated the largest crowd at a celebration since its incorporation today when the schools of Districts 54, 5 and 86 combined in a big May fête. Exhibits of school work occupied the large gathering until noon and at 12:30 several of the grades gave May drills.

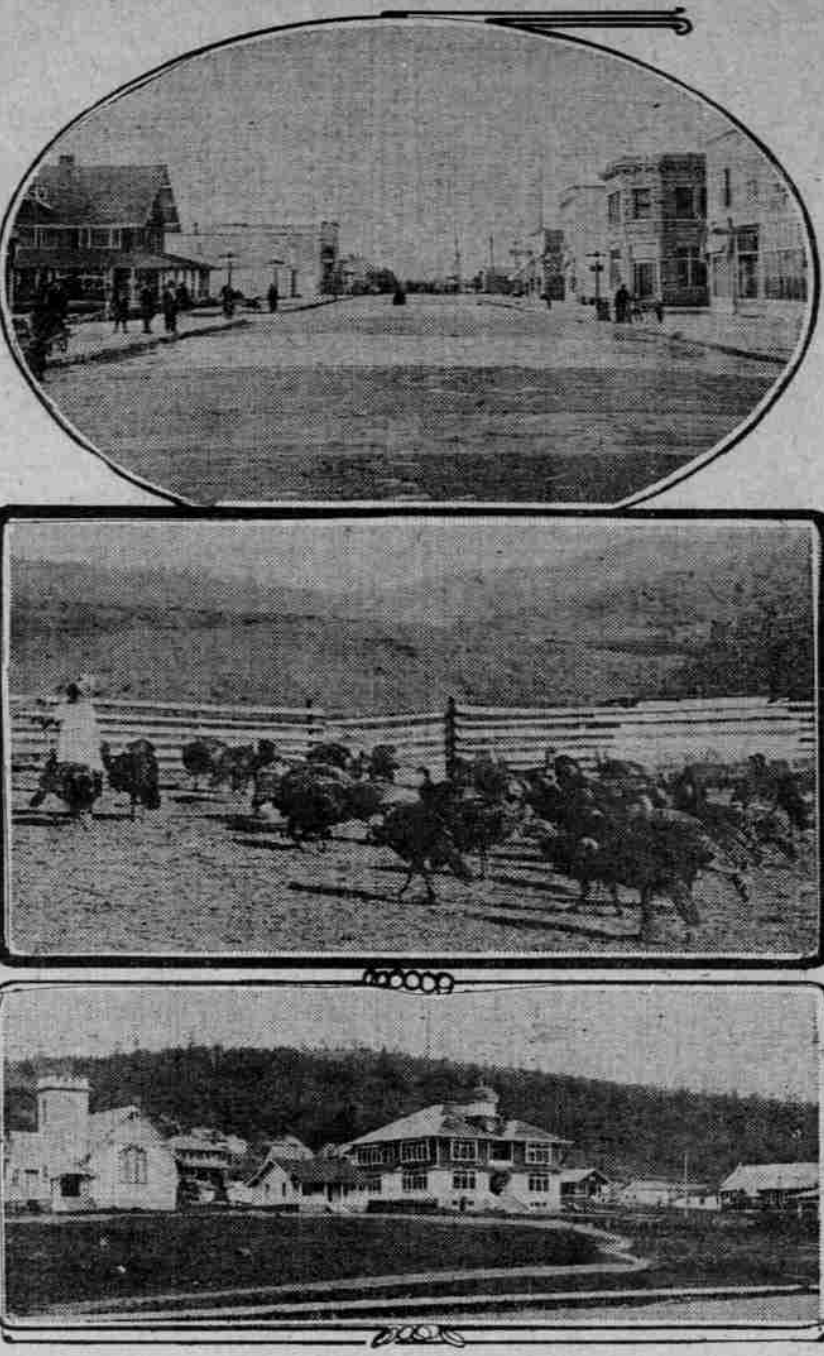
Grangeville Horse Show Opens. GRANGEVILLE, Idaho, May 28.—(Special.)—With a large number of the finest horses ever displayed in the Northwest, the big annual horse show opened here today. The management says 1000 horses will be here before the show closes on Friday, when many of these animals will be offered at auction sale.

Teacher Dies Suddenly. LEXINGTON, Or., Woman Succumbs at Home of Sister in Idaho. MOSCOW, Idaho, May 28.—(Special.)—Miss Florence Olmstead, a member of the public school faculty at Lexington, Or., died suddenly while sitting in a window at the home of her sister, Mrs. Dan Gerlough, 847 Ash street, viewing the campus day exercises at the university. She was stricken with paralysis in her school-room at Hillsboro three weeks ago.

Showers Make Big Berries. WHITE SALMON, Wash., May 28.—(Special.)—Contrary to expectations, the showers every day for the past week have not damaged the strawberry crop—but on account of them the berries are larger than usual.

What will it mean to Sutherlin to have a pay roll of \$1,000,000 a year? What will it mean when the orchards come into bearing, when the Everfresh Company pays out \$200,000 or \$300,000 a year for class B and class C fruits and all the class A fruits are sold at good figures?

SCENES AT SUTHERLIN.



TOP—VIEW ON MAIN STREET. MIDDLE—SCENE ON TURKEY FARM. BELOW—SCHOOL BUILDING AND CHURCHES.

have a pay roll of \$1,000,000 a year? What will it mean when the orchards come into bearing, when the Everfresh Company pays out \$200,000 or \$300,000 a year for class B and class C fruits and all the class A fruits are sold at good figures?

FAIR EXHIBIT IS PLANNED

Wasco County Business Men Favor Display at San Francisco.

THE DALLES, Or., May 28.—(Special.)—An enthusiastic meeting of citizens of The Dalles and Wasco County was held last night to determine the scope of this district's participation in the Panama-Pacific Exposition.

FRAUD CHARGE WITHDRAWN

Indictment of Eucalyptus Grove Promoters Dismissed at Spokane.

SPOKANE, Wash., May 28.—United States District Judge Rudkin, acting on orders from Washington, today dismissed the indictment charging misuse of the mails, which was returned here against Donald Davenport, of Spokane; Paul S. A. Bickel, of Jerome, Idaho; D. W. Stanrod, of Pocatello, Idaho; and A. B. Moss, of Payette, Idaho.

CENTRALIA BERRIES MOVE

150 Crates Daily Shipment Soon Will Increase to 500.

CENTRALIA, Wash., May 28.—(Special.)—The recently organized Washington Fruitgrowers' Association, composed of farmers of Ford's Prairie, Grand Mound, Rochester and other nearby points, is shipping about 150 crates of strawberries a day. These shipments will be increased to 500 crates as soon as the berries ripen faster. The berries are bringing \$1.75 a crate.

TEACHER DIES SUDDENLY

LEXINGTON, Or., Woman Succumbs at Home of Sister in Idaho.

MOSCOW, Idaho, May 28.—(Special.)—Miss Florence Olmstead, a member of the public school faculty at Lexington, Or., died suddenly while sitting in a window at the home of her sister, Mrs. Dan Gerlough, 847 Ash street, viewing the campus day exercises at the university. She was stricken with paralysis in her school-room at Hillsboro three weeks ago.

Showers Make Big Berries. WHITE SALMON, Wash., May 28.—(Special.)—Contrary to expectations, the showers every day for the past week have not damaged the strawberry crop—but on account of them the berries are larger than usual.

MARION ENDS COUNT

Official Figures Given Out by County Clerk Gehlar.

127 PROGRESSIVES VOTE

Much Money Changes Hands on Wager That Bond Issue Does Not Carry Two to One—Final Figures Are 7091 to 3570.

SALEM, Or., May 28.—(Special.)—The Progressive vote in Marion County at the recent primary, while small, was well scattered, according to official returns announced by County Clerk Gehlar today.

Special Election Not Likely. The law provides in cases of suchties that the Governor shall call a special election, but it is not believed a candidate will ask that it be done.

List of Nominees Complete. The nominees in this county for state and county offices are: State Senate—Republicans, A. M. LaFollett, farmer, and C. P. Bishop, merchant; Democrats, W. H. Downing and J. R. Linn; Progressives, A. M. LaFollett and B. J. Miles.

Representatives in the Legislature—Republicans, Dana H. Allen, lawyer; Sam H. Brown, farmer; D. C. Thomas, miller; Thomas Brown, lawyer; George W. Weeks, fruit grower. Democrats, J. P. E. Brentano, John P. Robertson, Thomas Brown, A. M. Dabryple, James R. Coleman, Progressives, A. M. LaFollett, B. J. Miles, Dana H. Allen, D. C. Thomas, George W. Weeks, Thomas Brown and Sam Brown and Brentano tied.

County Commissioner—Republican, W. H. Goulet; Democrat, P. L. Kennedy; Progressive, W. H. Goulet. Sheriff—William Esch, nominee of three parties.

County Clerk—Max Gehlar, nominee of three parties. Recorder—Mrs. Mildred R. Brooks, nominee of Republican and Progressive parties, and H. L. Clark, nominee of the Democratic party.

Treasurer—D. G. Drager, nominee of Republican and Progressive parties, and A. W. Howell, nominee of Democratic party.

Johnson Teachers Are Picked. JOHNSON, Wash., May 28.—(Special.)—The following teachers have been chosen by the Johnson School Board for next year: Mrs. Allie Babcock, primary; Mrs. Clara Fowler, intermediate; H. P. Willard, grammar grades, and L. T. Babcock, principal. The high school assistant has not been selected.

Payette Stockman Drops Dead. PENDLETON, Or., May 28.—(Special.)—Henry Erwin, a stockman of Payette, Idaho, dropped dead at Umatilla, while en route with a shipment of livestock to Portland. His wife has arrived here and will take the body back to Payette for burial.

RIVER AND HARBOR BILL IS INCREASED

Senate Committee Makes Substantial Additions, Especially for Northwest.

COLUMBIA RIVER FAVORED

Continuing Contract Held to Be Saving to Government, as Well as Expediting Work—New Surveys Provided For.

WASHINGTON, May 28.—(Special.)—While the river and harbor appropriation bill is still held in the Senate committee on commerce and the additions made to the House bill are still subject to the secrecy that is put on members of committees dealing with appropriations until the bills are finally reported to the Senate, enough has been learned to justify the prediction that the Senate committee on commerce has increased or added to the waterways bill some \$10,000,000—one-half being given to the Pacific Northwest.

Four million one hundred thousand dollars have been added for the purpose of improving the mouth of the Columbia. The bill as it came from the House contained an appropriation of \$1,000,000 for the improvement and maintenance of the mouth of the Columbia. The showing made before the commerce committee convinced that body that this improvement was of the first importance and should be considered in the light of a continuing contract.

Appropriation Means Saving. Having carefully weighed the continuing contract plan presented to the Columbia and desiring to save the Government as much money as possible, consonant with expeditious work, the committee has recommended to a full committee an appropriation of \$4,100,000 for the continuance of this project. It was considered that this would save the Government in the neighborhood of \$300,000.

In addition to this large increase, the subcommittee has recommended to the full committee an increase of \$100,000 for the improvement of Grays Harbor, bar and entrance, and \$30,000 for improving Skagit City bar on the Skagit River. Other increases for the Pacific Northwest are \$112,500 for improving the Sluslaw River in Oregon, the local authorities having pledged themselves to contribute like amount—a proposition which was regarded by the subcommittee as good business.

More Surveys Recommended. Besides the appropriations outlined, the committee on commerce has recommended additional surveys; Clatskanie River from the mouth of the City of Clatskanie, Oregon; Columbia and Snake Rivers, Washington and Idaho, from Cello Falls to Pittsburg Landing, Idaho; Columbia River from Camas to Lady's Island.

Wapato Holds Celebration. WAPATO, Wash., May 28.—(Special.)—Wapato celebrated the largest crowd at a celebration since its incorporation today when the schools of Districts 54, 5 and 86 combined in a big May fête.

Grangeville Horse Show Opens. GRANGEVILLE, Idaho, May 28.—(Special.)—With a large number of the finest horses ever displayed in the Northwest, the big annual horse show opened here today.

Teacher Dies Suddenly. LEXINGTON, Or., Woman Succumbs at Home of Sister in Idaho.

MOSCOW, Idaho, May 28.—(Special.)—Miss Florence Olmstead, a member of the public school faculty at Lexington, Or., died suddenly while sitting in a window at the home of her sister, Mrs. Dan Gerlough, 847 Ash street, viewing the campus day exercises at the university. She was stricken with paralysis in her school-room at Hillsboro three weeks ago.

Showers Make Big Berries. WHITE SALMON, Wash., May 28.—(Special.)—Contrary to expectations, the showers every day for the past week have not damaged the strawberry crop—but on account of them the berries are larger than usual.

What will it mean to Sutherlin to have a pay roll of \$1,000,000 a year? What will it mean when the orchards come into bearing, when the Everfresh Company pays out \$200,000 or \$300,000 a year for class B and class C fruits and all the class A fruits are sold at good figures?

What will it mean to Sutherlin to have a pay roll of \$1,000,000 a year? What will it mean when the orchards come into bearing, when the Everfresh Company pays out \$200,000 or \$300,000 a year for class B and class C fruits and all the class A fruits are sold at good figures?

What will it mean to Sutherlin to have a pay roll of \$1,000,000 a year? What will it mean when the orchards come into bearing, when the Everfresh Company pays out \$200,000 or \$300,000 a year for class B and class C fruits and all the class A fruits are sold at good figures?



Store Closed All Day Saturday in Observance of Memorial Day!

MEN will go in for outdoor pleasures Saturday and Sunday—it's the first of the Summer holidays. You'll feel much better if there is a new Summer Suit ready for you to slip into Saturday morning.

Suits at \$25---Marked Special!

Spice-span new productions from the famous shops of Stein-Bloch and Atterbury System. Smart new models to please most any man's tastes—natty patch pocket models, Norfolk, English and box-back styles. Clear-out tweeds and line stripes predominate. Suits that would usually sell for much more, we have marked very special at Twenty-Five Dollars.

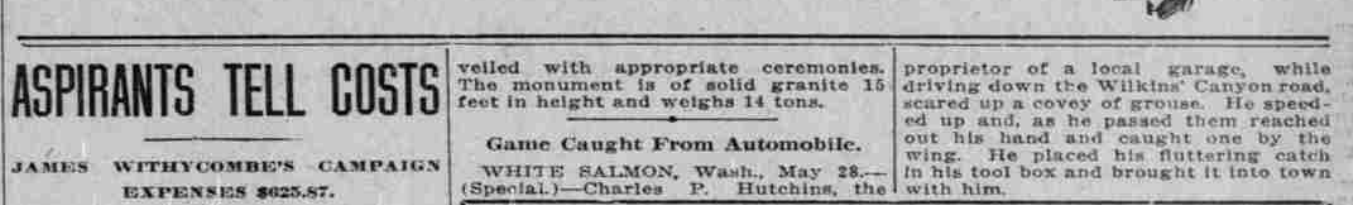
New Straws and Panamas

There seems no end to the new braids, the smart shapes, that this season has brought forth in Straw Hats for Men! The best of the new ones are here. Drop in for five minutes today and pick out the new Straw or Panama you're going to wear for the week-end holidays.

Exclusive Agency for Brewer Straws \$3 Dunlap Straws \$5 Panamas \$5 to \$10

BEN SELLING

Leading Clothier Morrison, at Fourth



ASPIRANTS TELL COSTS

JAMES WITHCUMBE'S CAMPAIGN EXPENSES \$625.87.

SALEM, Or., May 28.—(Special.)—The campaign of James Withcumbe, successful aspirant for the Republican nomination for Governor, cost \$625.87, according to a statement filed with Secretary of State Olcott today. T. E. Beer expended \$446.95; Charles A. Johns' campaign cost \$125.03 and that of Grant B. Dimick \$945.58.

Grangeville Horse Show Opens. GRANGEVILLE, Idaho, May 28.—(Special.)—With a large number of the finest horses ever displayed in the Northwest, the big annual horse show opened here today.

Teacher Dies Suddenly. LEXINGTON, Or., Woman Succumbs at Home of Sister in Idaho.

MOSCOW, Idaho, May 28.—(Special.)—Miss Florence Olmstead, a member of the public school faculty at Lexington, Or., died suddenly while sitting in a window at the home of her sister, Mrs. Dan Gerlough, 847 Ash street, viewing the campus day exercises at the university. She was stricken with paralysis in her school-room at Hillsboro three weeks ago.

Showers Make Big Berries. WHITE SALMON, Wash., May 28.—(Special.)—Contrary to expectations, the showers every day for the past week have not damaged the strawberry crop—but on account of them the berries are larger than usual.

What will it mean to Sutherlin to have a pay roll of \$1,000,000 a year? What will it mean when the orchards come into bearing, when the Everfresh Company pays out \$200,000 or \$300,000 a year for class B and class C fruits and all the class A fruits are sold at good figures?

What will it mean to Sutherlin to have a pay roll of \$1,000,000 a year? What will it mean when the orchards come into bearing, when the Everfresh Company pays out \$200,000 or \$300,000 a year for class B and class C fruits and all the class A fruits are sold at good figures?

What will it mean to Sutherlin to have a pay roll of \$1,000,000 a year? What will it mean when the orchards come into bearing, when the Everfresh Company pays out \$200,000 or \$300,000 a year for class B and class C fruits and all the class A fruits are sold at good figures?

What will it mean to Sutherlin to have a pay roll of \$1,000,000 a year? What will it mean when the orchards come into bearing, when the Everfresh Company pays out \$200,000 or \$300,000 a year for class B and class C fruits and all the class A fruits are sold at good figures?

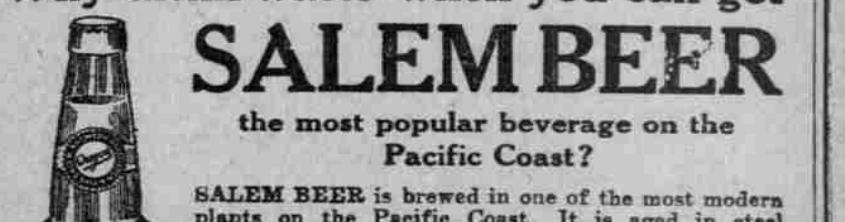
SEE OREGON FIRST

You can see 100 miles of Oregon's most fertile agricultural lands, beautiful wooded hills, picturesque landscapes and prospering cities in a few hours. The Great "Loop Trip" of the BIG RED STEEL ELECTRIC CARS of the SOUTHERN PACIFIC.



Why drink water when you can get SALEM BEER the most popular beverage on the Pacific Coast? SALEM BEER is brewed in one of the most modern plants on the Pacific Coast. It is aged in steel glass-lined tanks. It is conveyed by modern pipe line system direct to the bottle house, bottled under pressure and therefore never comes in contact with the air from the time it leaves the fermenting tank until the bottle is opened by the consumer.

Penney Bros. Telephone: Bell, E. 287 Home, B-2426. 379 EAST MORRISON STREET



Why drink water when you can get SALEM BEER the most popular beverage on the Pacific Coast? SALEM BEER is brewed in one of the most modern plants on the Pacific Coast.

Penney Bros. Telephone: Bell, E. 287 Home, B-2426. 379 EAST MORRISON STREET

SUNDAY as a day of rest or keen enjoyment is complete only when your Sunday Dinner is included and partaken of at the Imperial Hotel Grill.

Imperial Hotel Grill All the epicurean pleasures of life are here, properly prepared and served. Music evenings. Lunch, 12 to 2, 35c, 50c. Weekday dinner, 75c. Sunday Dinner, 5:30 to 9, \$1.

Men! Buy Your New Suit of Me Upstairs

The Reasons—The same suits, patterns, models, fabrics sold by the high-rent, street-level stores for \$20 and \$25, are sold by me UPSTAIRS for

\$15.00

"Ride up" and prove for yourself that you can save \$5 to \$10 ON YOUR SUIT

MAX MICHEL UPSTAIRS CLOTHES SHOP Fourth and Washington Streets. Second Floor. Direct Elevator, 121 Fourth Street.