

INSECT VEILS ARE PARISIAN NOVELTY

"Nightgown" Dress With Pronounced V Opening Seen at Auteuil Races.

DIAMONDS WORN BY ALL

American Women in Europe Said to Affect Aligrettes and Venetian Capes are in Evidence in Fashionable Assemblies.

PARIS, April 22.—More than \$2,000,000 worth of diamonds sparkled in the sunshine at the Auteuil races recently, where there was a record crowd. The revival of the craze for big diamonds was the dominating fashion note.

Large pear-shaped diamond pendants or huge square stones in rings were worn by every stylish woman, pearls, for once, being quite put in the shade.

Two new tendencies were prominent so far as dresses were concerned. One was the Watteau dress, which suddenly came into being again. It is made of tulle and has the characteristic small blue and white and a very moderate bustle at the back. With it is worn a small Louis XVI hat in straw tilted at the back, real flowers forming the trimming. The ensemble was a gracefully picturesque and Springlike.

Aligrettes Grow Popular.

With respect to hats, it is evident that aligrettes and Venetian capes are now being made in all colors and shapes, a very striking one being in turquoise blue with a turned-down collar about four inches deep, similar to that on a military coat. Some of these cape collars are a vivid yellow, others bright blue.

The most striking novelty of the day, however, was the "nightgown dress." It is a very loose, pure white crepe de chine gown tight-fitting at the waist with a small silk rope with pronounced V-shaped openings both at the back and front, and is the closest approach to an outdoor nightgown, in fact, in public.

With it is worn a small black toque trimmed with exceedingly long black plumes. This fashion was the sensation of the day.

Another was the appearance of Mlle. Polaire in a kilted skirt, a laurel wreath forming the top of her hat and resting on her hair. She was surrounded during the afternoon by hundreds of men who prevented her from moving about the paddock.

Medal collars are coming into favor, being worn especially with lace bodices which have low V-shaped openings. The medal collars, being lace, are kept upright with invisible wire.

Insects Ornament Vails.

The wearer of one of these collars had an almost invisible veil with a pattern of yellow, green and blue crawling down the middle of her cheek.

As a variant to this new fashion, other hideous insects are worked on the vails.

In footwear there is a notable tendency to have the color of the shoe-leather match the dress, and a number of yellow, green and blue shoes were seen. The uppers are very wide apart in front and are fastened with straps across the toes. Inverters and pumps are now frequently lined with silk, a fashion set by the confeder in Gilbert Chesterton's play, "Magic," at the Little Theatre.

It is not thought, however, that many of the startling novelties which are being designed will catch on, though a number of men are having evening waistcoats cut from the silk which faces their dress coats.

The great objection to all these innovations is that the present system of rigid uniformity in men's evening dress is a great blessing to the poorer man, for he is always on an equality with the millionaire.

MEN'S DRESS STYLE RIGID

London Tailors Unsuccessful With New Wrinkles.

LONDON, April 18.—Some of the West End tailors are again making endeavors to introduce novelties of color and cut into evening dress.

Many men are wearing blue evening suits, but these are of so dark a hue that they look black under artificial light. Men's evening Inverters and pumps are now frequently lined with silk, a fashion set by the confeder in Gilbert Chesterton's play, "Magic," at the Little Theatre.

It is not thought, however, that many of the startling novelties which are being designed will catch on, though a number of men are having evening waistcoats cut from the silk which faces their dress coats.

The great objection to all these innovations is that the present system of rigid uniformity in men's evening dress is a great blessing to the poorer man, for he is always on an equality with the millionaire.

BOY OF 17 ESCAPES NOOSE

Commution Comes After Plea. Companion Must Hang.

HARRISBURG, Pa., April 19.—Luigi Deleo, aged 17, was saved from the gallows by the recommendation of the State Board of Pardons that his sentence of death for a murder in Fayette County be commuted to life imprisonment, but Frank Wells, aged 19, convicted with Deleo of shooting down a man who interfered to prevent a highway robbery. Counsel for Deleo asserted that he did not do the shooting.

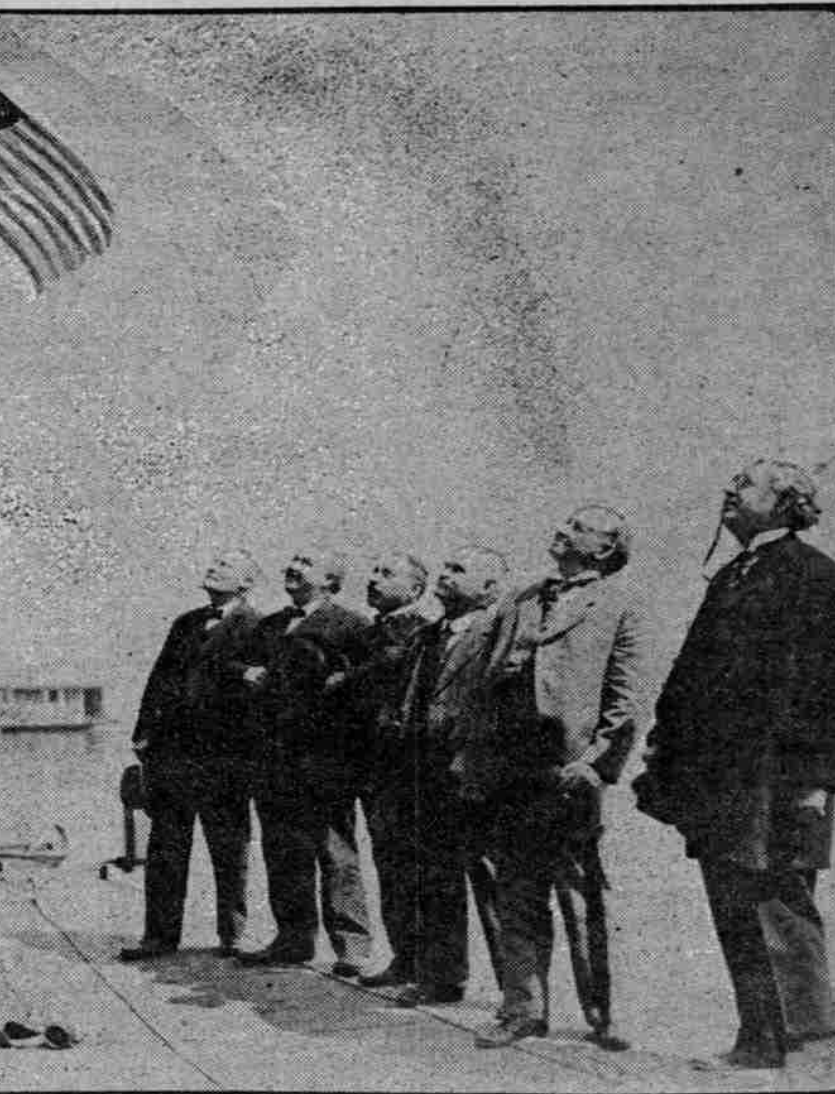
500,000 TO BE VACCINATED

Many New Yorkers Will Be Given Treatment Next Few Weeks.

NEW YORK, April 18.—(Special.)—Dr. Sigmund S. Goldwater, president of the Board of Health, says that he expects to vaccinate within the next few weeks between 225,000 and 500,000 New Yorkers.

The Commissioner says he hopes to avoid the expense of a general vaccination. To vaccinate the 5,000,000 persons in New York would require the constant services of 100 to 150 doctors, working for weeks. It would cost a large sum.

STARS AND STRIPES ARE RAISED ON WATERFRONT AFTER VERA CRUZ VICTORY TO REMAIN UNTIL FIGHTING ENDS



"OLD GLORY" SALUTED BY MUNICIPAL AND FEDERAL OFFICIALS.

Over the municipal boatlanding at the foot of Stark street floats an American flag that was made fast to the halyards yesterday by orders of Harbormaster Speler on the receipt of news that 3009 of Uncle Sam's marines occupied Vera Cruz. It was the first flag to flutter from a waterfront building. As the flag was run aloft it was saluted when the order "Hats off!" was given by George F. Fuller, United States Inspector of Boilers. The group includes Frederick W. Mulkey, chairman of the Commission of Public Docks; Collector of Customs Burke, Mr. Fuller, Harbormaster Speler, H. F. McGrath, Chief Custom-house Inspector, and Captain E. S. Edwards, United States Inspector of Hulls. Harbormaster Speler declares the flag will remain unfurled until the Mexican trouble terminates.

SPURN COIN, IS CRY

Congress Will Stop Aid to Agricultural Department.

ACTION TAKEN BY SENATE

United States to Turn Down John D. Rockefeller's Money in Future. Yearly Fund of \$250,000 for Rural Work Outcome.

WASHINGTON, D. C., April 16.—Congress will take action at this session to discontinue the general educational fund of John D. Rockefeller, founded from the work of the Department of Agriculture.

As a result Congress probably will appropriate \$250,000 yearly for carrying on certain investigations and educational work in the southern states that are now being done at the expense of the Rockefeller foundation.

This relates to the study of the ravages of the cotton boll weevil, the question of marketing agricultural products, farm credits, forms of co-operation among the farmers of the United States, girls' and boys' clubs formed to improve the methods of growing poultry and various crops, and the stimulation of interest in home economics.

About \$75,000 was expended last year by the Rockefeller foundation to promote girls' clubs to study and improve the methods for raising farm products and for raising poultry.

Senator Kenyon, of Iowa, made the discovery some time ago that an important part of the educational work of the Agricultural Department was being promoted by money supplied by the Rockefeller foundation. He introduced a resolution, which the Senate passed, calling on the Secretary of Agriculture for a full statement of this work, the names of persons employed under the direction of the Department of Agriculture and the salaries paid to them. The report was laid before the Senate today and ordered printed.

The Secretary of Agriculture informed the Senate that the work was being directed by an ex-Harvard professor, Dr. Thomas N. Vail, who draws a salary of \$625 a month; that there are 12 other officers who draw salaries ranging from \$125 a month upward, and that the total salary expenditure for this work under the Department of Agriculture is \$37,166 annually.

Two college professors have been paid their expenses while assisting in the work.

The work was authorized by an act of Congress, passed a little over a year ago, directing an investigation into methods of marketing in use on the farms of the United States. The question of co-operation and farm credits were incidental.

Congress did not make sufficient appropriation to meet the expenses of this work, and the general education board took it over under the direction of the Rockefeller foundation, which agreed to finance it.

Senator Gore, chairman of the committee on agriculture, said today he had conferred with Assistant Secretary Galloway, of the Department of Agriculture, and that Congress would make the necessary appropriation from the Treasury to meet the expenses of this kind of work, and that no more money would be accepted from the Rockefeller foundation for this purpose.

"The Government will not in the future carry on its educational work with money supplied by the Standard Oil Company," Senator Kenyon said this afternoon, commenting on the result that has followed the passage of his resolution.

CAR PROMOTER OF PRAYER

South African Natives, Frightened by Miracle, Are Penitent.

If you had never seen a monstrous, silly thing gliding along the great

SCALE FOR CHECKERS FIXED

Municipal Dock Laborers Will Receive 40 Cents an Hour.

Checkers and laborers employed on Municipal Dock No. 1 when vessels are loading and discharging cargo will be paid 40 cents an hour, the same scale that members of the Grainhandlers' Union receive. The decision was reached at a meeting of the Commission on Dock Laborers, which is now checking on other docks have organized a union and will ask for 50 cents an hour straight time and 75 cents a second shift.

Every time he starts out in his motor car he starts a prayer meeting. A native sees "the things" coming, and down he flops on bended knees. Woodworth is a second Buddha, and he has all the road he wants.

ENGINEER AVERTS WRECK

Pere Marquette Flyer Halted 50 Feet From Derailed Cars.

HAMMOND, Ind., April 19.—M. O'Brien, engineer of a Lake Shore passenger train, flagged a speeding passenger train, a Pere Marquette flyer at Indiana Harbor and prevented a collision with his own train, which had been derailed.

A freak accident had caused three cars and a combination passenger car to leave the rails, injuring three passengers. The heroic action of O'Brien prevented a second and more serious wreck.

The injured: Arthur Jacks, Cleveland, hurt internally; taken to St. Margaret's Hospital, Gary, Ind. Miss Norma Erickson, Los Angeles, hip broken; taken to Chicago. Miss Anna George, Akron, O., head bruised and scalp torn; taken to Chicago.

The injured passengers were members of a theatrical troupe en route to Chicago from Gary, Ind. The Lake Shore train was entering a siding to allow the Pere Marquette flyer to pass when the wreck occurred. The derailment was caused by a brake-shoe dropping into a switch frog.

Unable to rise, he continued to give the warning signal until the engineer of the speeding flyer observed the wreckage and fell heavily to the ground.

Unable to rise, he continued to give the warning signal until the engineer of the speeding flyer observed the wreckage and fell heavily to the ground.

Unable to rise, he continued to give the warning signal until the engineer of the speeding flyer observed the wreckage and fell heavily to the ground.

Unable to rise, he continued to give the warning signal until the engineer of the speeding flyer observed the wreckage and fell heavily to the ground.

Unable to rise, he continued to give the warning signal until the engineer of the speeding flyer observed the wreckage and fell heavily to the ground.

Unable to rise, he continued to give the warning signal until the engineer of the speeding flyer observed the wreckage and fell heavily to the ground.

Unable to rise, he continued to give the warning signal until the engineer of the speeding flyer observed the wreckage and fell heavily to the ground.

Unable to rise, he continued to give the warning signal until the engineer of the speeding flyer observed the wreckage and fell heavily to the ground.

Unable to rise, he continued to give the warning signal until the engineer of the speeding flyer observed the wreckage and fell heavily to the ground.

Unable to rise, he continued to give the warning signal until the engineer of the speeding flyer observed the wreckage and fell heavily to the ground.

Unable to rise, he continued to give the warning signal until the engineer of the speeding flyer observed the wreckage and fell heavily to the ground.

Unable to rise, he continued to give the warning signal until the engineer of the speeding flyer observed the wreckage and fell heavily to the ground.

Unable to rise, he continued to give the warning signal until the engineer of the speeding flyer observed the wreckage and fell heavily to the ground.

Unable to rise, he continued to give the warning signal until the engineer of the speeding flyer observed the wreckage and fell heavily to the ground.

Unable to rise, he continued to give the warning signal until the engineer of the speeding flyer observed the wreckage and fell heavily to the ground.

Unable to rise, he continued to give the warning signal until the engineer of the speeding flyer observed the wreckage and fell heavily to the ground.

Unable to rise, he continued to give the warning signal until the engineer of the speeding flyer observed the wreckage and fell heavily to the ground.

Unable to rise, he continued to give the warning signal until the engineer of the speeding flyer observed the wreckage and fell heavily to the ground.

Unable to rise, he continued to give the warning signal until the engineer of the speeding flyer observed the wreckage and fell heavily to the ground.

Unable to rise, he continued to give the warning signal until the engineer of the speeding flyer observed the wreckage and fell heavily to the ground.

Unable to rise, he continued to give the warning signal until the engineer of the speeding flyer observed the wreckage and fell heavily to the ground.

Unable to rise, he continued to give the warning signal until the engineer of the speeding flyer observed the wreckage and fell heavily to the ground.

SNAP RATES SUGGEST

One Per Cent Added When Mexican Territory Touched.

PANAMA ROAD TO BE USED

American-Hawaiian Steamers Propose to Abandon Tehuantepec Route Unless United States Will Guarantee Protection.

War risks advanced 1 per cent yesterday on the strength of late reports of the activity of the American and Mexican forces, the insurance rates on cargo for or bound via the Mexican territory being $\frac{1}{2}$ per cent.

Agents of the insurance interests say that war risks apply particularly on shipments routed via the American-Hawaiian steamers, which transship cargo to coast consignment by rail from Salina Cruz to Puerto Mexico and thence by steamer to New York, freight bound this way from the Atlantic coast being hauled in the same manner. As the American-Hawaiian has decided virtually to abandon the Tehuantepec route, unless adequate protection is afforded by the United States, and divert all business by way of the Panama Railroad, it is assumed there will be no requirement for the application of war risks.

C. D. Kennedy, Portland agent of the American-Hawaiian, received the following telegram yesterday bearing plans for avoiding interference to steamers and shipments:

"The trouble between the United States and Mexico at present interfering with our Tehuantepec service. Wireless reports received this morning state that ships and cargoes at Salina Cruz are in danger, but that labor is becoming demoralized. It is not safe to land cargo at Salina Cruz, and it is impossible to return to Tehuantepec. The Pacific coast route via the Atlantic is being used, and we expect to divert all steamship traffic to the coast of Mexico. The service on either coast will then be resumed by our ships via the Panama Railroad and the Gulf of Mexico. It is impossible to return to Tehuantepec. The Pacific coast route via the Atlantic is being used, and we expect to divert all steamship traffic to the coast of Mexico. The service on either coast will then be resumed by our ships via the Panama Railroad and the Gulf of Mexico. It is impossible to return to Tehuantepec. The Pacific coast route via the Atlantic is being used, and we expect to divert all steamship traffic to the coast of Mexico. The service on either coast will then be resumed by our ships via the Panama Railroad and the Gulf of Mexico. It is impossible to return to Tehuantepec. The Pacific coast route via the Atlantic is being used, and we expect to divert all steamship traffic to the coast of Mexico. The service on either coast will then be resumed by our ships via the Panama Railroad and the Gulf of Mexico. It is impossible to return to Tehuantepec. The Pacific coast route via the Atlantic is being used, and we expect to divert all steamship traffic to the coast of Mexico. The service on either coast will then be resumed by our ships via the Panama Railroad and the Gulf of Mexico. It is impossible to return to Tehuantepec. The Pacific coast route via the Atlantic is being used, and we expect to divert all steamship traffic to the coast of Mexico. The service on either coast will then be resumed by our ships via the Panama Railroad and the Gulf of Mexico. It is impossible to return to Tehuantepec. The Pacific coast route via the Atlantic is being used, and we expect to divert all steamship traffic to the coast of Mexico. The service on either coast will then be resumed by our ships via the Panama Railroad and the Gulf of Mexico. It is impossible to return to Tehuantepec. The Pacific coast route via the Atlantic is being used, and we expect to divert all steamship traffic to the coast of Mexico. The service on either coast will then be resumed by our ships via the Panama Railroad and the Gulf of Mexico. It is impossible to return to Tehuantepec. The Pacific coast route via the Atlantic is being used, and we expect to divert all steamship traffic to the coast of Mexico. The service on either coast will then be resumed by our ships via the Panama Railroad and the Gulf of Mexico. It is impossible to return to Tehuantepec. The Pacific coast route via the Atlantic is being used, and we expect to divert all steamship traffic to the coast of Mexico. The service on either coast will then be resumed by our ships via the Panama Railroad and the Gulf of Mexico. It is impossible to return to Tehuantepec. The Pacific coast route via the Atlantic is being used, and we expect to divert all steamship traffic to the coast of Mexico. The service on either coast will then be resumed by our ships via the Panama Railroad and the Gulf of Mexico. It is impossible to return to Tehuantepec. The Pacific coast route via the Atlantic is being used, and we expect to divert all steamship traffic to the coast of Mexico. The service on either coast will then be resumed by our ships via the Panama Railroad and the Gulf of Mexico. It is impossible to return to Tehuantepec. The Pacific coast route via the Atlantic is being used, and we expect to divert all steamship traffic to the coast of Mexico. The service on either coast will then be resumed by our ships via the Panama Railroad and the Gulf of Mexico. It is impossible to return to Tehuantepec. The Pacific coast route via the Atlantic is being used, and we expect to divert all steamship traffic to the coast of Mexico. The service on either coast will then be resumed by our ships via the Panama Railroad and the Gulf of Mexico. It is impossible to return to Tehuantepec. The Pacific coast route via the Atlantic is being used, and we expect to divert all steamship traffic to the coast of Mexico. The service on either coast will then be resumed by our ships via the Panama Railroad and the Gulf of Mexico. It is impossible to return to Tehuantepec. The Pacific coast route via the Atlantic is being used, and we expect to divert all steamship traffic to the coast of Mexico. The service on either coast will then be resumed by our ships via the Panama Railroad and the Gulf of Mexico. It is impossible to return to Tehuantepec. The Pacific coast route via the Atlantic is being used, and we expect to divert all steamship traffic to the coast of Mexico. The service on either coast will then be resumed by our ships via the Panama Railroad and the Gulf of Mexico. It is impossible to return to Tehuantepec. The Pacific coast route via the Atlantic is being used, and we expect to divert all steamship traffic to the coast of Mexico. The service on either coast will then be resumed by our ships via the Panama Railroad and the Gulf of Mexico. It is impossible to return to Tehuantepec. The Pacific coast route via the Atlantic is being used, and we expect to divert all steamship traffic to the coast of Mexico. The service on either coast will then be resumed by our ships via the Panama Railroad and the Gulf of Mexico. It is impossible to return to Tehuantepec. The Pacific coast route via the Atlantic is being used, and we expect to divert all steamship traffic to the coast of Mexico. The service on either coast will then be resumed by our ships via the Panama Railroad and the Gulf of Mexico. It is impossible to return to Tehuantepec. The Pacific coast route via the Atlantic is being used, and we expect to divert all steamship traffic to the coast of Mexico. The service on either coast will then be resumed by our ships via the Panama Railroad and the Gulf of Mexico. It is impossible to return to Tehuantepec. The Pacific coast route via the Atlantic is being used, and we expect to divert all steamship traffic to the coast of Mexico. The service on either coast will then be resumed by our ships via the Panama Railroad and the Gulf of Mexico. It is impossible to return to Tehuantepec. The Pacific coast route via the Atlantic is being used, and we expect to divert all steamship traffic to the coast of Mexico. The service on either coast will then be resumed by our ships via the Panama Railroad and the Gulf of Mexico. It is impossible to return to Tehuantepec. The Pacific coast route via the Atlantic is being used, and we expect to divert all steamship traffic to the coast of Mexico. The service on either coast will then be resumed by our ships via the Panama Railroad and the Gulf of Mexico. It is impossible to return to Tehuantepec. The Pacific coast route via the Atlantic is being used, and we expect to divert all steamship traffic to the coast of Mexico. The service on either coast will then be resumed by our ships via the Panama Railroad and the Gulf of Mexico. It is impossible to return to Tehuantepec. The Pacific coast route via the Atlantic is being used, and we expect to divert all steamship traffic to the coast of Mexico. The service on either coast will then be resumed by our ships via the Panama Railroad and the Gulf of Mexico. It is impossible to return to Tehuantepec. The Pacific coast route via the Atlantic is being used, and we expect to divert all steamship traffic to the coast of Mexico. The service on either coast will then be resumed by our ships via the Panama Railroad and the Gulf of Mexico. It is impossible to return to Tehuantepec. The Pacific coast route via the Atlantic is being used, and we expect to divert all steamship traffic to the coast of Mexico. The service on either coast will then be resumed by our ships via the Panama Railroad and the Gulf of Mexico. It is impossible to return to Tehuantepec. The Pacific coast route via the Atlantic is being used, and we expect to divert all steamship traffic to the coast of Mexico. The service on either coast will then be resumed by our ships via the Panama Railroad and the Gulf of Mexico. It is impossible to return to Tehuantepec. The Pacific coast route via the Atlantic is being used, and we expect to divert all steamship traffic to the coast of Mexico. The service on either coast will then be resumed by our ships via the Panama Railroad and the Gulf of Mexico. It is impossible to return to Tehuantepec. The Pacific coast route via the Atlantic is being used, and we expect to divert all steamship traffic to the coast of Mexico. The service on either coast will then be resumed by our ships via the Panama Railroad and the Gulf of Mexico. It is impossible to return to Tehuantepec. The Pacific coast route via the Atlantic is being used, and we expect to divert all steamship traffic to the coast of Mexico. The service on either coast will then be resumed by our ships via the Panama Railroad and the Gulf of Mexico. It is impossible to return to Tehuantepec. The Pacific coast route via the Atlantic is being used, and we expect to divert all steamship traffic to the coast of Mexico. The service on either coast will then be resumed by our ships via the Panama Railroad and the Gulf of Mexico. It is impossible to return to Tehuantepec. The Pacific coast route via the Atlantic is being used, and we expect to divert all steamship traffic to the coast of Mexico. The service on either coast will then be resumed by our ships via the Panama Railroad and the Gulf of Mexico. It is impossible to return to Tehuantepec. The Pacific coast route via the Atlantic is being used, and we expect to divert all steamship traffic to the coast of Mexico. The service on either coast will then be resumed by our ships via the Panama Railroad and the Gulf of Mexico. It is impossible to return to Tehuantepec. The Pacific coast route via the Atlantic is being used, and we expect to divert all steamship traffic to the coast of Mexico. The service on either coast will then be resumed by our ships via the Panama Railroad and the Gulf of Mexico. It is impossible to return to Tehuantepec. The Pacific coast route via the Atlantic is being used, and we expect to divert all steamship traffic to the coast of Mexico. The service on either coast will then be resumed by our ships via the Panama Railroad and the Gulf of Mexico. It is impossible to return to Tehuantepec. The Pacific coast route via the Atlantic is being used, and we expect to divert all steamship traffic to the coast of Mexico. The service on either coast will then be resumed by our ships via the Panama Railroad and the Gulf of Mexico. It is impossible to return to Tehuantepec. The Pacific coast route via the Atlantic is being used, and we expect to divert all steamship traffic to the coast of Mexico. The service on either coast will then be resumed by our ships via the Panama Railroad and the Gulf of Mexico. It is impossible to return to Tehuantepec. The Pacific coast route via the Atlantic is being used, and we expect to divert all steamship traffic to the coast of Mexico. The service on either coast will then be resumed by our ships via the Panama Railroad and the Gulf of Mexico. It is impossible to return to Tehuantepec. The Pacific coast route via the Atlantic is being used, and we expect to divert all steamship traffic to the coast of Mexico. The service on either coast will then be resumed by our ships via the Panama Railroad and the Gulf of Mexico. It is impossible to return to Tehuantepec. The Pacific coast route via the Atlantic is being used, and we expect to divert all steamship traffic to the coast of Mexico. The service on either coast will then be resumed by our ships via the Panama Railroad and the Gulf of Mexico. It is impossible to return to Tehuantepec. The Pacific coast route via the Atlantic is being used, and we expect to divert all steamship traffic to the coast of Mexico. The service on either coast will then be resumed by our ships via the Panama Railroad and the Gulf of Mexico. It is impossible to return to Tehuantepec. The Pacific coast route via the Atlantic is being used, and we expect to divert all steamship traffic to the coast of Mexico. The service on either coast will then be resumed by our ships via the Panama Railroad and the Gulf of Mexico. It is impossible to return to Tehuantepec. The Pacific coast route via the Atlantic is being used, and we expect to divert all steamship traffic to the coast of Mexico. The service on either coast will then be resumed by our ships via the Panama Railroad and the Gulf of Mexico. It is impossible to return to Tehuantepec. The Pacific coast route via the Atlantic is being used, and we expect to divert all steamship traffic to the coast of Mexico. The service on either coast will then be resumed by our ships via the Panama Railroad and the Gulf of Mexico. It is impossible to return to Tehuantepec. The Pacific coast route via the Atlantic is being used, and we expect to divert all steamship traffic to the coast of Mexico. The service on either coast will then be resumed by our ships via the Panama Railroad and the Gulf of Mexico. It is impossible to return to Tehuantepec. The Pacific coast route via the Atlantic is being used, and we expect to divert all steamship traffic to the coast of Mexico. The service on either coast will then be resumed by our ships via the Panama Railroad and the Gulf of Mexico. It is impossible to return to Tehuantepec. The Pacific coast route via the Atlantic is being used, and we expect to divert all steamship traffic to the coast of Mexico. The service on either coast will then be resumed by our ships via the Panama Railroad and the Gulf of Mexico. It is impossible to return to Tehuantepec. The Pacific coast route via the Atlantic is being used, and we expect to divert all steamship traffic to the coast of Mexico. The service on either coast will then be resumed by our ships via the Panama Railroad and the Gulf of Mexico. It is impossible to return to Tehuantepec. The Pacific coast route via the Atlantic is being used, and we expect to divert all steamship traffic to the coast of Mexico. The service on either coast will then be resumed by our ships via the Panama Railroad and the Gulf of Mexico. It is impossible to return to Tehuantepec. The Pacific coast route via the Atlantic is being used, and we expect to divert all steamship traffic to the coast of Mexico. The service on either coast will then be resumed by our ships via the Panama Railroad and the Gulf of Mexico. It is impossible to return to Tehuantepec. The Pacific coast route via the Atlantic is being used, and we expect to divert all steamship traffic to the coast of Mexico. The service on either coast will then be resumed by our ships via the Panama Railroad and the Gulf of Mexico. It is impossible to return to Tehuantepec. The Pacific coast route via the Atlantic is being used, and we expect to divert all steamship traffic to the coast of Mexico. The service on either coast will then be resumed by our ships via the Panama Railroad and the Gulf of Mexico. It is impossible to return to Tehuantepec. The Pacific coast route via the Atlantic is being used, and we expect to divert all steamship traffic to the coast of Mexico. The service on either coast will then be resumed by our ships via the Panama Railroad and the Gulf of Mexico. It is impossible to return to Tehuantepec. The Pacific coast route via the Atlantic is being used, and we expect to divert all steamship traffic to the coast of Mexico. The service on either coast will then be resumed by our ships via the Panama Railroad and the Gulf of Mexico. It is impossible to return to Tehuantepec. The Pacific coast route via the Atlantic is being used, and we expect to divert all steamship traffic to the coast of Mexico. The service on either coast will then be resumed by our ships via the Panama Railroad and the Gulf of Mexico. It is impossible to return to Tehuantepec. The Pacific coast route via the Atlantic is being used, and we expect to divert all steamship traffic to the coast of Mexico. The service on either coast will then be resumed by our ships via the Panama Railroad and the Gulf of Mexico. It is impossible to return to Tehuantepec. The Pacific coast route via the Atlantic is being used, and we expect to divert all steamship traffic to the coast of Mexico. The service on either coast will then be resumed by our ships via the Panama Railroad and the Gulf of Mexico. It is impossible to return to Tehuantepec. The Pacific coast route via the Atlantic is being used, and we expect to divert all steamship traffic to the coast of Mexico. The service on either coast will then be resumed by our ships via the Panama Railroad and the Gulf of Mexico. It is impossible to return to Tehuantepec. The Pacific coast route via the Atlantic is being used, and we expect to divert all steamship traffic to the coast of Mexico. The service on either coast will then be resumed by our ships via the Panama Railroad and the Gulf of Mexico. It is impossible to return to Tehuantepec. The Pacific coast route via the Atlantic is being used, and we expect to divert all steamship traffic to the coast of Mexico. The service on either coast will then be resumed by our ships via the Panama Railroad and the Gulf of Mexico. It is impossible to return to Tehuantepec. The Pacific coast route via the Atlantic is being used, and we expect to divert all steamship traffic to the coast of Mexico. The service on either coast will then be resumed by our ships via the Panama Railroad and the Gulf of Mexico. It is impossible to return to Tehuantepec. The Pacific coast route via the Atlantic is being used, and we expect to divert all steamship traffic to the coast of Mexico. The service on either coast will then be resumed by our ships via the Panama Railroad and the Gulf of Mexico. It is impossible to return to Tehuantepec. The Pacific coast route via the Atlantic is being used, and we expect to divert all steamship traffic to the coast of Mexico. The service on either coast will then be resumed by our ships via the Panama Railroad and the Gulf of Mexico. It is impossible to return to Tehuantepec. The Pacific coast route via the Atlantic is being used, and we expect to divert all steamship traffic to the coast of Mexico. The service on either coast will then be resumed by our ships via the Panama Railroad and the Gulf of Mexico. It is impossible to return to Tehuantepec. The Pacific coast route via the Atlantic is being used, and we expect to divert all steamship traffic to the coast of Mexico. The service on either coast will then be resumed by our ships via the Panama Railroad and the Gulf of Mexico. It is impossible to return to Tehuantepec. The Pacific coast route via the Atlantic is being used, and we expect to divert all steamship traffic to the coast of Mexico. The service on either coast will then be resumed by our ships via the Panama Railroad and the Gulf of Mexico. It is impossible to return to Tehuantepec. The Pacific coast route via the Atlantic is being used, and we expect to divert all steamship traffic to the coast of Mexico. The service on either coast will then be resumed by our ships via the Panama Railroad and the Gulf of Mexico. It is impossible to return to Tehuantepec. The Pacific coast route via the Atlantic is being used, and we expect to divert all steamship traffic to the coast of Mexico. The service on either coast will then be resumed by our ships via the Panama Railroad and the Gulf of Mexico. It is impossible to return to Tehuantepec. The Pacific coast route via the Atlantic is being used, and we expect to divert all steamship traffic to the coast of Mexico. The service on either coast will then be resumed by our ships via the Panama Railroad and the Gulf of Mexico. It is impossible to return to Tehuantepec. The Pacific coast route via the Atlantic is being used, and we expect to divert all steamship traffic to the coast of Mexico. The service on either coast will then be resumed by our ships via the Panama Railroad and the Gulf of Mexico. It is impossible to return to Tehuantepec. The Pacific coast route via the Atlantic is being used, and we expect to divert all steamship traffic to the coast of Mexico. The service on either coast will then be resumed by our ships via the Panama Railroad and the Gulf of Mexico. It is impossible to return to Tehuantepec. The Pacific coast route via the Atlantic is being used, and we expect to divert all steamship traffic to the coast of Mexico. The service on either coast will then be resumed by our ships via the Panama Railroad and the Gulf of Mexico. It is impossible to return to Tehuantepec. The Pacific coast route via the Atlantic is being used, and we expect to divert all steamship traffic to the coast of Mexico. The service on either coast will then be resumed by our ships via the Panama Railroad and the Gulf of Mexico. It is impossible to return to Tehuantepec. The Pacific coast route via the Atlantic is being used, and we expect to divert all steamship traffic to the coast of Mexico. The service on either coast will then be resumed by our ships via the Panama Railroad and the Gulf of Mexico. It is impossible to return to Tehuantepec. The Pacific coast route via the Atlantic is being used, and we expect to divert all steamship traffic to the coast of Mexico. The service on either coast will then be resumed by our ships via the Panama Railroad and the Gulf of Mexico. It is impossible to return to Tehuantepec. The Pacific coast route via the Atlantic is being used, and we expect to divert all steamship traffic to the coast of Mexico. The service on either coast will then be resumed by our ships via the Panama Railroad and the Gulf of Mexico. It is impossible to return to Tehuantepec. The Pacific coast route via the Atlantic is being used, and we expect to divert all steamship traffic to the coast of Mexico. The service on either coast will then be resumed by our ships via the Panama Railroad and the Gulf of Mexico. It is impossible to return to Tehuantepec. The Pacific coast route via the Atlantic is being used, and we expect to divert all steamship traffic to the coast of Mexico. The service on either coast will then be resumed by our ships via the Panama Railroad and the Gulf of Mexico. It is impossible to return to Tehuantepec. The Pacific coast route via the Atlantic is being used, and we expect to divert all steamship traffic to the coast of Mexico. The service on either coast will then be resumed by our ships via the Panama Railroad and the Gulf of Mexico. It is impossible to return to Tehuantepec. The Pacific coast route via the Atlantic is being used, and we expect to divert all steamship traffic to the coast of Mexico. The service on either coast will then be resumed by our ships via the Panama Railroad and the Gulf of Mexico. It is impossible to return to Tehuantepec. The Pacific coast route via the Atlantic is being used, and we expect to divert all steamship traffic to the coast of Mexico. The service on either coast will then be resumed by our ships via the Panama Railroad and the Gulf of Mexico. It is impossible to return to Tehuantepec. The Pacific coast route via the Atlantic is being used, and we expect to divert all steamship traffic to the coast of Mexico. The service on either coast will then be resumed by our ships via the Panama Railroad and the Gulf of Mexico. It is impossible to return to Tehuantepec. The Pacific coast route via the Atlantic is being used, and we expect to divert all steamship traffic to the coast of Mexico. The service on either coast will then be resumed by our ships via the Panama Railroad and the Gulf of Mexico. It is impossible to return to Tehuantepec. The Pacific coast route via the Atlantic is being used, and we expect to divert all steamship traffic to the coast of Mexico. The service on either coast will then be resumed by our ships via the Panama Railroad and the Gulf of Mexico. It is impossible to return to Tehuantepec. The Pacific coast route via the Atlantic is being used, and we expect to divert all steamship traffic to the coast of Mexico. The service on either coast will then be resumed by our ships via the Panama Railroad and the Gulf of Mexico. It is impossible to return to Tehuantepec. The Pacific coast route via the Atlantic is being used, and we expect to divert all steamship traffic to the coast of Mexico. The service on either coast will then be resumed by our ships via the Panama Railroad and the Gulf of Mexico. It is impossible to return to Tehuantepec. The Pacific coast route via the Atlantic is being used, and we expect to divert all steamship traffic to the coast of Mexico. The service on either coast will then be resumed by our ships via the Panama Railroad and the Gulf of Mexico. It is impossible to return to Tehuantepec. The Pacific coast route via the Atlantic is being used, and we expect to divert all steamship traffic to the coast of Mexico. The service on either coast will then be resumed by our ships via the Panama Railroad and the Gulf of Mexico. It is impossible to return to Tehuantepec. The Pacific coast route via the Atlantic is being used, and we expect to divert all steamship traffic to the coast of Mexico. The service on either coast will then be resumed by our ships via the Panama Railroad and the Gulf of Mexico. It is impossible to return to Tehuantepec. The Pacific coast route via the Atlantic is being used, and we expect to divert all steamship traffic to the coast of Mexico. The service on either coast will then be resumed by our ships via the Panama Railroad and the Gulf of Mexico. It is impossible to return to Tehuantepec. The Pacific coast route via the Atlantic is being used, and we expect to divert all steamship traffic to the coast of Mexico. The service on either coast will then be resumed by our ships via the Panama Railroad and the Gulf of Mexico. It is impossible to return to Tehuantepec. The Pacific coast route via the Atlantic is being used, and we expect to divert all steamship traffic to the coast of Mexico. The service on either coast will then be resumed by our ships via the Panama Railroad and the Gulf of Mexico. It is impossible to return to Tehuantepec. The Pacific coast route via the Atlantic is being used, and we expect to divert all steamship traffic to the coast of Mexico. The service on either coast will then be resumed by our ships via the Panama Railroad and the Gulf of Mexico. It is impossible to return to Tehuantepec. The Pacific coast route via the Atlantic is being used, and we expect to divert all steamship traffic to the coast of Mexico. The service on either coast will then be resumed by our ships via the Panama Railroad and the Gulf of Mexico. It is impossible to return to Tehuantepec. The Pacific coast route via the Atlantic is being used, and we expect to divert all steamship traffic to the coast of Mexico. The service on either coast will then be resumed by our ships via the Panama Railroad and the Gulf of Mexico. It is impossible to return to Tehuantepec. The Pacific coast route via the Atlantic is being used, and we expect to divert all steamship traffic to the coast of Mexico. The service on either coast will then be resumed by our ships via the Panama Railroad and the Gulf of Mexico. It is impossible to return to Tehuantepec. The Pacific coast route via the Atlantic is being used, and we expect to divert all steamship traffic to the coast of Mexico. The service on either coast will then be resumed by our ships via the Panama Railroad and the Gulf of Mexico. It is impossible to return to Tehuantepec. The Pacific coast route via the Atlantic is being used, and we expect to divert all steamship traffic to the coast of Mexico. The service on either coast will then be resumed by our ships via the Panama Railroad and the Gulf of Mexico. It is impossible to return to Tehuante