

# Largest Ice Skating Arena in the World

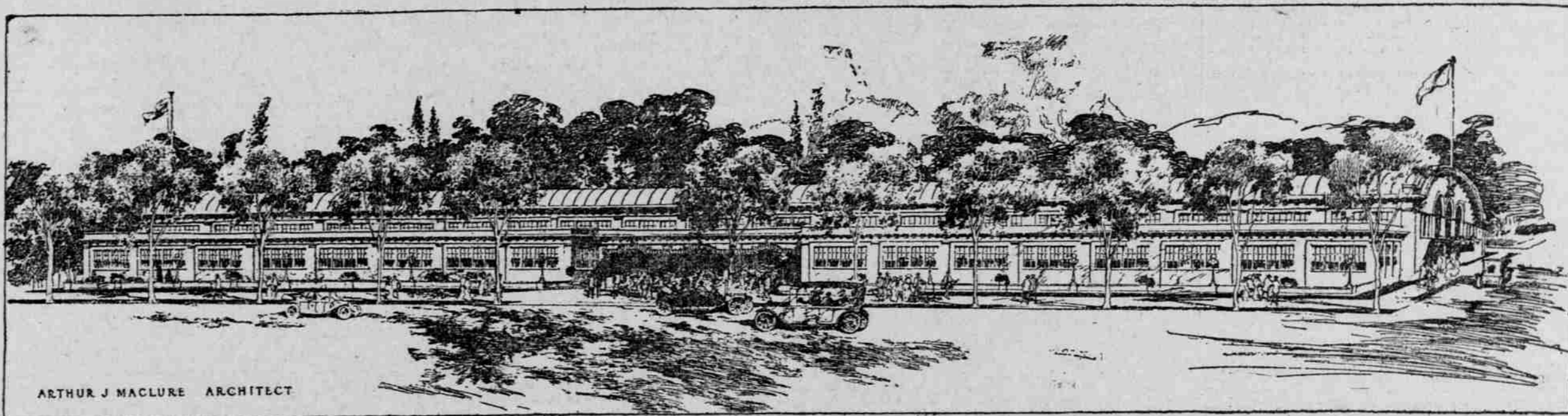
Going up at Marshall, Northrup and Twentieth Streets

All Portland will skate this Winter. Boyhood days will return — girlhood will be lived all over again, and the delights of the "king of sports" will be introduced to our children. There is nothing so exhilarating — nothing so healthful and nothing so fascinating as skating on crisp, smooth ice.

The Portland Ice Hippodrome now being rushed to completion will be the largest in the world. The building will be 175x360 feet. The massive dome roof will be supported with trusses and no posts or pillars will obstruct the skating area. There will be seating capacity for over 5000 people — dressing-rooms and quarters for skating clubs and hockey teams will be provided. There will also be refreshment rooms and a restaurant.

The method of freezing the rink is interesting, and is a process usually misunderstood by the public. Twenty miles of 1¼-inch pipe, laid four inches apart, containing a circulating brine 12 degrees above zero, freeze the ground. After this water in small quantities is sprinkled on until ice is formed 2½ inches above the floor. Ice made this way is much harder and smoother than natural ice, and owing to its firm foundation, is much safer, there being no possibility of breaking through and getting wet or hurt.

The rink will be open in the morning, in the afternoon and in the evening. It is very likely that all the contests will be held in the evening, as this is the most convenient time for the general public to attend.



ARTHUR J. MACLURE ARCHITECT

Will Open for the Winter Season in December

Athletic organizations are making preparations for the organization of hockey teams, which will compete with out-of-the-city leagues as well as their local contemporaries. The plant will not open in time this year to secure its own professional hockey team, but arrangements will be made next season whereby this Hippodrome will have its own team entered in the Pacific Coast League, along with the British Columbia teams. This is a new sport for Portland and will be received with great favor, for it is considered the fastest and most interesting game known.

Every skater, whether a devotee of rollers or ice, appreciates the added pleasure of skating to music. This will be an amusement feature of the Portland Ice Hippodrome of interest to the skater, as well as the spectator. A spacious handstand will be erected and the concerts will be of a character far above the average standard. It is hoped to secure

talent of a caliber to make the concerts an attraction in themselves. Well-selected programmes will be rendered, and, so far as possible, requests will be granted. This feature will be a means of giving employment to local musicians nearly all year around.

The Portland Ice Hippodrome will have employment for a number of people. Concessions for the renting and selling of skates and shoes will be open, as will be the concession for grinding skates. Then, too, advertising space in the building and advertising programme concessions will be let to local interests. In all, from every angle at which it is viewed, the Hippodrome is an industrial addition to the City of Portland of importance. It will be a source of pleasure to its patrons and a means of employment to many, and a customer of many local merchants and industries.

Ice skating is a healthy and exhilarating sport. It is conducive to the best physical development as well as the moral welfare of its adherents. Medical men in this city, as well as in every other community where Ice Hippodromes are in operation, highly recommend this sport for old and young. Municipal authorities in all other cities indorse Ice Hippodromes and speak of them as being patronized by the representative citizens of the city.

## PORTLAND ICE HIPPODROME WILCOX BUILDING

### FAIR HIT HARD BY RAIN

TOUCHET RACING CARD CALLED OFF ON ACCOUNT OF MUD.

Wild West Performances Given by Cowboys—Women Show Intense Interest.

DAYTON, Wash., Oct. 7.—(Special.)—Rain affected the attendance at the Touchet Valley Fair Saturday. Friday was the best second day known in the seven years of the fair. Owing to a muddy track all racing events were declared off Saturday, but the cowboys gave a performance. Tex McLeod, of Roundup fame, and W. H. B. Smith, of California, were among the performers. The livestock and poultry exhibits were unusually fine, and vegetables,

fruits and cereals had their usual places. The women of the county showed a great deal of interest in the domestic art departments, so excellent specimens of work were shown.

### BABES SCORE 98 PER CENT

Winners of Prizes at Touchet Valley Are Announced.

DAYTON, Wash., Oct. 7.—(Special.)—Marvin Emery Johnson and Geneva Ruth Barr won the boys' and girls' prizes, respectively, in the Better Babies contest at the Touchet Valley Fair last week.

Those receiving cash prizes were Marvin Emery Johnson, who scored 98 per cent; Max Kenworthy, 96.5 per cent; John Israel, 95.5 per cent; Ralph Allen Thompson, 94 per cent; Geneva Ruth Barr, 93 per cent; Bonita Margaret Stadfield, 92 per cent; Mildren Ford, 84 per cent; Gladys Dorothy Renne-

### ASSESSORS WILL MEET

IDAHO OFFICIALS TO DISCUSS TIMBER VALUATIONS.

Effort Being Made to Arrive at Uniform and Equitable Basis in Northern Counties.

MOSCOW, Idaho, Oct. 7.—(Special.)—A lively meeting is predicted when the Assessors and County Commissioners of the timbered counties of Northern Idaho meet here October 13 to agree upon a line of action to pursue in assessing timber lands. A personal representative of the State Tax Commission from Boise and representatives of several of the big timber companies operating in North Idaho will be present. Besides these, it is expected that a number of timber

cruisers will be on hand to supply expert advice in the matter of timber assessments.

The meeting is the outgrowth of one held recently at Sandpoint, when it was proposed by representatives of the timber companies that they do their own cruising and that the county employ cruisers to cover only the holdings of the individual timber owners. The county representatives, however, appeared to have taken the stand that the cruise should be made entirely official and that before the companies' cruisers should be accepted they must be checked by the county cruiser after a preliminary cruise of their property.

### Kelso Election to Be Spirited.

CENTRALIA, Wash., Oct. 7.—(Special.)—Seventeen have filed to date for various Kelso offices for the municipal election, to be held November 4. An intense rivalry exists between the Citizens and Socialist parties, which promises to bring out a record vote. There will be contests for every office except those of Clerk, Treasurer and Attorney.

### CHAMBER MAY GIVE AID

PORTLAND-NEW YORK STEAMSHIP LINE INTERESTS.

Captain Chilcott, Handling Canvass, Advises Additional Plans to Help Along Movement Be Made.


With pledges for the \$100,000 bonus, sought to bring to Portland a company to establish a Portland-New York steamship line, reaching a total of \$15,000 with contingent pledges amounting to \$5000 more offered, the campaign to raise funds may be taken up and carried to completion by the Chamber of Commerce in the near future. Captain Richard Chilcott, who has been heading the canvass thus far, suggested at a meeting yesterday noon of the committee appointed from clubs of the city on the steamship matter, that

additional plans to help along the movement be made, and it was agreed that the matter should be submitted to the trustees of the Chamber of Commerce with the request that a broad public campaign be launched.

Subscriptions of \$1000 were pledged at the outset of the movement by A. H. Devers, A. L. Mills, C. S. Jackson and F. H. Ransom. Additional subscriptions for similar sums were reported yesterday at the meeting, from W. F. Burrell, W. C. Alvord, Willamette Iron & Steel Works, C. F. Adams, Ben Selling, J. C. Ainsworth, O. M. Clark and O'Shea brothers. R. H. Brown, of the Peninsula Industrial Company, said that the interests he represents will subscribe \$2000 and the Monarch Lumber Company \$2000, if the proposed steamship company leases or buys land for the shipyard from the industrial company. It was impossible, however, for a definite response to this offer to be made at that time by Captain Chilcott.

Alta Vista Has Postoffice. CHERALIS, Wash., Oct. 7.—(Special.)—Alta Vista postoffice has been established in eastern Lewis County, near

Riffa, with Oliver Workman as postmaster. The mail will be supplied through the Chesham star route service.

**NEVER FAILS TO STOP THE ACHE**  
  
**DENT'S TOOTHACHE GUM**  
 USED BY MILLIONS FOR 25 YEARS  
**GET DENT'S**  
 ALL DRUGGISTS - 15¢