

CIVIC LEADERS TO MEET TODAY

League of Northwest Municipalities Begins Sessions at Commercial Club.

30 CITIES' OFFICIALS HERE

In Gathering of 200 to Study Methods of Improving City Governments Will Be 11 Mayors. Programme Is Varied.

CITY COMMISSION DELAYS MEETING THIS MORNING.

Because of the opening of the session of the League of Northwest Municipalities at 10 o'clock this morning the City Commission will not hold its regular weekly meeting at 10 o'clock as usual.

Official representatives of at least 30 cities of the Pacific Northwest will attend the second annual conference of the League of Northwest Municipalities, which begins at the Commercial Club in Portland at 10 o'clock this morning.

So far it is expected that the attendance will be close to 200, many representatives of universities and commercial organizations having arranged to attend, as well as officials from practically all of the principal cities of these states.

Mr. A. Ballinger to Come. Seattle will be represented by A. E. Griffin, a member of the City Council, and R. A. Ballinger. Spokane will be represented by Commissioner C. M. Fassett.

The convention will open at the Commercial Club with an address of welcome by Mayor Albee, followed by a response by ex-Governor Miles C. Moore, of Walla Walla, president of the league.

Having and Parking Topics. Subsequently a meeting of engineers and street superintendents will be held to hear the address by P. E. Hobson, City Engineer of Grants Pass and Coquille, on "Bituminous Pavements Laid by the Penetration Method."

This will conclude the morning programme. At noon the delegates will have a luncheon as guests of the Ad Club, at which R. A. Ballinger will be the principal speaker.

At 2 P. M.—Police administration; address by A. J. G. Stewart, Mayor of Walla Walla, and R. A. Ballinger, of Seattle; discussion. 3 P. M.—A municipal business manager; address by Loren E. Coyne, business manager, Milton, Or.; discussion. 4:30 P. M.—Address on "Municipal Ownership of Street Railways" by D. W. Stansbury, of Portland.

At 8 o'clock this evening Herbert Folger, of Astoria, will speak on "Fire Protection," and Sam Hill, of Portland, will speak on "Good Roads and Streets." His address will be illustrated with stereoscopic views.

The reception committees are: Of Portland Commercial Club—Guy W. Talbot, W. M. Ladd, W. W. Cotton, John S. Beal, J. C. Albee, Jay Smith, Henry L. Corbett, Franklin T. Griffith, W. C. Alford, O. M. Plummer, Walter M. Cook, J. P. Rasmussen, Dr. William F. Ogburn, Frank S. Francis, of Clatskanie; of H. R. Albee, Mayor; of W. H. Daly, Commissioner of Public Utilities; of R. G. Dieck, Commissioner of Public Works; of C. A. Bishop, Commissioner of Finance; of W. L. Brewster, Commissioner of Public Affairs.

COURTESY IS QUESTIONED

Police Officers Accused of Lack of Respect for Citizens.

PORTLAND, Sept. 30.—(To the Editor.)—As members of the group of students who were arrested last Saturday night on charges of disorderly conduct, we wish space for a word in regard to the action of Police Captain Riley and Officer Lee Martin.

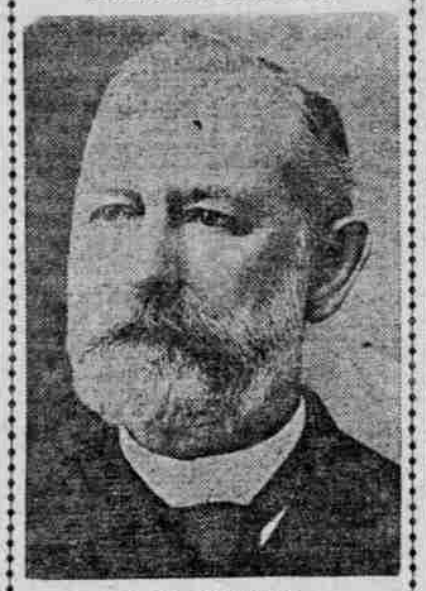
In spite of the fact that these police officers and the evening papers persistently see fit to refer to us as ruffians and thugs, it may occur to some of the citizens of Portland, among whom many of us have lived all our lives, that there is another side to the matter.

peace and dignity of the City of Portland. The matter which we wish explained is this: Why should not courtesy work both ways? Captain Riley, with his well-known hospitality and Celtic warmth of enthusiasm, urged that "every damn one of us be arrested" as soon as we entered the station. In his eagerness to extend to us the full measure of official welcome, Captain Riley evidently overlooked ordinance 14049, section 1, of the 1910 compilation of the ordinances of the City of Portland, which provides that using profane language in the street or in any public place is disorderly conduct and punishable by fine and imprisonment.

In regard to the arrest of Mr. Miller on the corner of Tenth and Washington streets, the trial established the fact that he was arrested while complying with Officer Lee Martin's order to move on, and his only offense was in trying to explain that he was of sufficiently quick mental perception to understand the order without having it shaken and clubbed into his head. Or possibly Mr. Martin wished him to get out in the middle of the street and run rapidly in order that he (Martin) might add to his laurels in his well-known skill in posterior pistol practice.

We feel that Judge Stevenson treated us with courtesy and fairness, and do not wish to be understood as criticising the City of Portland, which provides that using profane language in the street or in any public place is disorderly conduct and punishable by fine and imprisonment.

VETERAN PORTLAND BUSINESS MAN WHO WAS 80 YEARS OLD TUESDAY.



J. E. Haseltine, one of Portland's oldest and best-loved pioneer citizens, was 80 years old Tuesday. He passed the day quietly at his home, 247 Stout street, in company with members of his family and some of his friends.

Mr. Haseltine has been a resident of Portland for more than 30 years and has become well known throughout the Northwest as a merchant and a public-spirited business man. His name is a testimonial to his enterprise and his ability. For the last few years he has not been actively connected with the business, although he has been in excellent health and possessed of quite as much of that vitality that made him so successful in his younger days.

Mr. Haseltine first came to Portland in 1876 from Portland, Me., where for many years he was an officer of the Chamber of Commerce and of the old Board of Trade. In November of this year Mr. and Mrs. Haseltine will celebrate the 48th anniversary of their marriage. Their five children live in Portland. They are: J. A., H. A. and W. C. Haseltine, Mrs. Gage Haseltine and Mrs. M. H. Schmeer.

BRIDEGROOM FEARS GRAFT

Would-Be Benedict, Misinformed on Medical Law, Is Set Right.

A would-be benedict writes from Forest Grove, Or., to Health Officer White, inquiring the terms of the marriage license law of the State of Oregon. He says: "I understand there is a law that a man must have a doctor's certificate before he gets married in this state and that it costs \$25 and must be obtained from some certain doctor appointed by law. Now, this smacks strongly of graft to me and I do not believe it."

To set the man's mind at ease Dr. White informed him by return mail that the law was not quite so bad as he supposed, that any licensed physician could examine him and that the fee was only one-tenth of what he had been informed it was, with 50 cents extra for a notary's fee.

The smooth touch and long wearing qualities of KOHL-NOOR Pencils are due to refined graphite and uniformity of the 17 variations of lead; also copying. Buy a dozen of your favorite today.—Adv.

How I Darkened My Gray Hair

Lady Gives Simple Home Recipe That She Used to Darken Her Gray Hair.

For years I tried to restore my gray hair to its natural color with the prepared dyes and stains, but none of them gave satisfaction and they were all expensive. I finally ran onto a simple recipe which I mixed at home that gives wonderful results. I gave the recipe, which is as follows, to a number of my friends, and they are all delighted with it. To 7 oz. of water add a small box of Barbo Compound, 1 oz. of bay rum and 1/4 oz. of glycerine. Use every other day until the hair becomes the required shade, then every two weeks. It will not only darken the gray hair, but removes dandruff and scalp humors, and acts as a tonic to the hair. It is not sticky or greasy, does not rub off and does not color the scalp. You can prepare it at home at very little expense.—Adv.

Special 25c Lunch Served Daily in the Basement—Soda Fountain in Basement—Shoe-Shining Parlors in the Basement Standard Central Needle Sewing Machines Sold on \$1-a-Week Club Plan—Portland Agents Ladies' Home Journal Patterns

Royal Worcester Corsets Special 98c Pair. Basement—A popular model in the well-known Royal Worcester Corsets at a special price. Medium bust, long hips, with four hose supporters attached. Best grade coutil and attractively trimmed. All sizes, from 18 up to 30. 98c Special Wednesday at the pair.

Olds, Wortman & King. Reliable Merchandise—Reliable Methods. OCCUPYING ENTIRE CITY BLOCK—MORRISON, TENTH, WEST PARK AND ALDER STS.

Seasonable Offerings in Basement Underprice Store

Double Green Trading Stamps with Cash Purchases Amounting to 10c or Over \$2.50, \$3 Hat Shapes 98c

In the Basement. Sale Extraordinary of New Trimmed Hat Shapes in fancy Plushes and Felts in a great variety of styles in black and colors. Reg. \$2.50, \$3.50 98c

Buckram Hat Shapes Special, 48c. Many exclusive shapes in black or white. Made from excellent quality material. For a brisk one-day sale—Your choice 48c

\$7.50-\$10 Trimmed Hats \$4.98. In the Basement Underprice Store—The very newest of the New Fall shapes are included in this remarkable Millinery Sale for today. Over 300 Hats in the assortment and no two alike—therefore you are sure to find one to suit you. All the wanted colorings and shapes, \$4.98 with richest of trimmings. Worth up to \$10.00. Choice \$4.98

Beautiful French Plumes, Special \$2.48. Fancy Feathers on Sale at 98c Each. Basement—Large, full French Plumes, perfect in dye and extra good grade stock. Come in black, white and good range of popular colors. A rare bargain at this very low price. Take your 98c choice Wednesday at \$2.48

Women's \$1 Outing Flannel Gowns 75c. Children's Flannel Gowns at 48c. Basement—Made from extra heavy quality outing flannel with soft, warm fleece. Garments are cut full and long and nicely finished. Attractive line of stripe patterns. All sizes. The regular \$1.00 75c. On sale, special, at 48c

\$1.50 Chiffon Motor Veils on Sale 98c. 35c to 50c Fancy Ribbons 25c Yard. Basement—Fine grade French Chiffon Motor Veils in extra large sizes, with neat hemstitched borders. Shown in black, white and all popular colors. \$1.50 98c. On sale, special, at 98c

18-Inch Allover Laces, Special, 29c Yd. Mill-Ends Embroidery at 10c Yard. Basement—Dainty shadow and net effects in a great variety of attractive designs. Full 18 inches wide and shown in white, cream or ecru. On sale Wednesday 29c

Boys' \$5 and \$6 School Suits Special at \$3.65. Main Floor—Boys' Nobby School Suits. Many with two pairs of pants. Made from excellent grade materials in Norfolk or regulation styles. Dark, serviceable colorings for school; sizes 8 to 15 years. \$5.00 and \$6.00 Suits. Choice \$3.65

Boys' 35c School Blouses 25c. Boys' Sweaters at 98c. Basement—Good staunch materials in plain colors and neat stripe patterns. Extra well made and perfect fitting. Sizes 6 to 15 years. Regular \$1.00 25c. On sale, special, at 98c

Boys' Knickerbocker Pants 75c. Boys' Pajamas Now 59c. Basement—Boys' Knickerbocker Pants of fine quality corduroys and tweed mixtures. Cut peg top, well made and perfect fitting. Ages 5 to 16. Reg. 75c \$1.00 Pants, only 59c

Men's Regular \$4.00 Wool Sweaters Only \$2.69. Men's \$2.50 Pants, \$1.98—\$1.50 Shirts, \$1.19—\$1.25 Undershirts, 50c. Basement—Men's heavy Wool Sweaters in shaker knit; ruff neck or high collar. \$3.50 and \$4.00 Sweaters, \$2.69 special, at \$1.98

Basement Sale of China Ware. 15c Old Blue Tea Cups and Saucers, Wednesday at only 10c. 15c Old Blue Oatmeal Dishes on sale at this low price, 10c. 15c Old Blue Decoration 3-inch Plates priced at only, ea. 10c. 15c Old Blue Decoration Deep Bowls selling at only, ea. 10c. 15c Gold Lined Oatmeal, 10c. 15c Glass Covered Sugars at 10c. 15c Glass Creamers at only 10c. 15c Glass Olive Trays at 10c. 20c Gold Lined Pie Plates, 10c. 20c Glass Celery Trays at 10c. Regular 20c Blue Border Coupe Soups specially priced at 10c. Regular 15c Colored Glass Footed Jelly Dish, special only 10c. Regular 15c Colored Glass Flat Jelly Dish, sale price, ea. 10c. Regular 15c Colored Glass Scalloped Jelly Dish at only 10c. Special bargain in Many odd lines of Dinner Sets. See them.

NOTION SPECIALS

In Basement. 5c Pins, 2 for 5c—Excellent quality English Pins with needle point; 200 full count to paper. Come! 5c Spool Silk, 2 1/2c—Good quality Spool Silk for machine or hand use. Black and all wanted colors. Spool Cotton, 4c—Black, white and good assortment of popular colors. Double S tamps with purchase. Hair Brushes, 10c—Special purchase 1000 Hair Brushes. Good size, polished wood back, well made. Hooks and Eyes, 2 1/2c—Black or white Hooks and Eyes in assorted sizes. Our regular 5c grade. 10c Toilet Paper, 5c—Full 1000 sheets to the roll. Limit 20 rolls to customer. On sale today. 10c Twine Shopping Bags, sp'1 5c. 25c Shell Hair Goods, choice, 5c

New Silk Waists Special \$2.98. Basement—Many charming new styles are shown in this splendid lot. Materials are silks, shadow laces and marquisettes in plain or fancy trimmed models. Stripes, checks and plain colors in richest of new Fall shades. Full range of all sizes. Wednesday \$2.98

\$1.75 Waists for 95c. Basement—Plain or novelty styles of beautiful sheer materials. Waists which sell in the ordinary way at from \$1.50 to \$1.75. No doubt many will take advantage of this unusual sale and buy 2 or 3 of these pretty Waists. 95c. All sizes. Choice now at 95c

Women's 75c Fall Weight Union Suits Only 59c. Union Suits at 95c—Girls' Union Suits 45c. Women's Fine Cotton Union Suits. Pure white with soft, warm, fleece lining. High or low neck, long or half sleeves, ankle length. All sizes and regular 75c grade. They will be placed on sale, 59c Wednesday, only 59c

Women's Extra Fine Union Suits. Pure white fleeced cotton, fine close-ribbed and neat fitting. High neck, long sleeves and ankle length. Full range of all sizes. On special sale to 95c Wednesday, the suit 95c

Women's Winter Weight Vests, Pants 48c. Children's Vests and Pants for 19c. Basement—Women's Winter Weight Vests and Pants in fine close-ribbed cotton. High neck, long sleeves, ankle-length Pants and Tights. All sizes. Wednesday at only 48c

Basement—Women's Winter Weight Vests and Pants of fine ribbed cotton with soft, warm fleece. Vests and Pants in sizes 4 to 14 years. On sale Wednesday at only 19c

Women's 25c Medium Weight Black Cashmere Hose 19c. Bleached Bath Towels at 14c. 72x90 Sheets 39c Each. Basement—Good heavy 18x30 bleached Bath Towels. Size 18x30 inches and very absorbent. Sale 14c Wednesday, sp'1

Basement—Full double bed size bleached Bed Sheets, neatly hemmed and good weight. Specially priced, only 39c

Basement—Mill ends of good heavy Outing Flannels in lengths up to 20 yards. Good pat. 9c. 12 1/2c grade 9c

Basement—Extra heavy Flannelettes in splendid new Fall patterns and colorings. Reg. 12 1/2c 16c grade, at 12 1/2c

Basement—18-in. bleached Crash Toweling, with colored border. Good weight and quality. Sale 5c price, special, yard 5c

Basement—Great one-day sale Men's Undershirts in medium and heavy weight wool. Odd lines. Regular \$1.00 and \$1.25 kinds, garment at 50c

Basement—Men's heavy wool flannel Shirts in navy, green and olive. Standard cut, in sizes 14 1/2 to 17. Regular \$1.50, at \$1.19

Basement—Men's high-grade corduroy and cassimere Pants in good colors and patterns. The regular \$2.50 grade, \$1.98 on sale, sp'1

Basement—Men's heavy wool flannel Shirts in navy, green and olive. Standard cut, in sizes 14 1/2 to 17. Regular \$1.50, at \$1.19

Basement—Great one-day sale Men's Undershirts in medium and heavy weight wool. Odd lines. Regular \$1.00 and \$1.25 kinds, garment at 50c

Basement—Men's heavy wool flannel Shirts in navy, green and olive. Standard cut, in sizes 14 1/2 to 17. Regular \$1.50, at \$1.19

Basement—Men's high-grade corduroy and cassimere Pants in good colors and patterns. The regular \$2.50 grade, \$1.98 on sale, sp'1

Basement—Men's heavy wool flannel Shirts in navy, green and olive. Standard cut, in sizes 14 1/2 to 17. Regular \$1.50, at \$1.19

Basement—Men's high-grade corduroy and cassimere Pants in good colors and patterns. The regular \$2.50 grade, \$1.98 on sale, sp'1

Basement—Men's heavy wool flannel Shirts in navy, green and olive. Standard cut, in sizes 14 1/2 to 17. Regular \$1.50, at \$1.19

Basement—Men's high-grade corduroy and cassimere Pants in good colors and patterns. The regular \$2.50 grade, \$1.98 on sale, sp'1

Basement—Men's heavy wool flannel Shirts in navy, green and olive. Standard cut, in sizes 14 1/2 to 17. Regular \$1.50, at \$1.19

Basement—Men's high-grade corduroy and cassimere Pants in good colors and patterns. The regular \$2.50 grade, \$1.98 on sale, sp'1

Basement—Men's heavy wool flannel Shirts in navy, green and olive. Standard cut, in sizes 14 1/2 to 17. Regular \$1.50, at \$1.19

Smart New Tailored Suits \$15

New Coats, Special at \$9.98 Each. Basement—Extraordinary value in these new Fall Suits we offer to-day, 200 smart new models in popular new weaves—serges, tweeds, diagonals and two-toned mixtures. Good plain tailored styles for general wear. All sizes Regular \$20.00, \$25.00 Suits now \$15.00

Dress Skirts \$3.48—\$3.50 House Dresses 98c. Basement—Many charming new styles in separate Skirts here for your choosing. Plain serges and fancy mixtures in the season's most favored shades. Just what you want for general utility wear. Priced, special, for \$3.48 today only, at \$3.48

Children's School Coats, Special \$2.98. Girls' Smart Fall Coats at \$4.98. Basement—These attractive little Coats are worth much more than we ask for them. Good heavy weights in plain colors and novelty mixtures. Smartly tailored along very latest lines. Ages 2 to 6 years. Buy them to \$2.98 day at, special, only \$2.98

Girls' All-Wool Serge Dresses at \$2.98. Women's \$4.00 Petticoats at \$1.48. Basement—These attractive little Coats are worth much more than we ask for them. Good heavy weights in plain colors and novelty mixtures. Smartly tailored along very latest lines. Ages 2 to 6 years. Buy them to \$2.98 day at, special, only \$2.98

Basement—Special sale 200 new Fall Coats for girls 6 to 14 years of age. Built for service in many splendid new styles. Heavy weights, with trimming of contrasting colors. Coats that fit perfectly. Offered for \$4.98 Wednesday's sale at \$4.98

Basement—Beautiful white Petticoats at a bargain price for Wednesday. Made from very finest of materials, lavishly trimmed with laces, embroideries, ribbons, etc. They are the regular \$3.50 to \$4.00 grades, and are now \$1.48 on sale, special, only \$1.48

Basement—Girls' All-Wool Serge Dresses for less than you would pay for materials alone. Nicely made and attractively trimmed. Shown in colors, navy, brown and cardinal and in sizes 6 to 14 years. Specially priced for \$2.98 Wednesday's sale at \$2.98

Basement—Girls' All-Wool Serge Dresses for less than you would pay for materials alone. Nicely made and attractively trimmed. Shown in colors, navy, brown and cardinal and in sizes 6 to 14 years. Specially priced for \$2.98 Wednesday's sale at \$2.98

Basement—Girls' All-Wool Serge Dresses for less than you would pay for materials alone. Nicely made and attractively trimmed. Shown in colors, navy, brown and cardinal and in sizes 6 to 14 years. Specially priced for \$2.98 Wednesday's sale at \$2.98

Basement—Girls' All-Wool Serge Dresses for less than you would pay for materials alone. Nicely made and attractively trimmed. Shown in colors, navy, brown and cardinal and in sizes 6 to 14 years. Specially priced for \$2.98 Wednesday's sale at \$2.98

Basement—Girls' All-Wool Serge Dresses for less than you would pay for materials alone. Nicely made and attractively trimmed. Shown in colors, navy, brown and cardinal and in sizes 6 to 14 years. Specially priced for \$2.98 Wednesday's sale at \$2.98

Basement—Girls' All-Wool Serge Dresses for less than you would pay for materials alone. Nicely made and attractively trimmed. Shown in colors, navy, brown and cardinal and in sizes 6 to 14 years. Specially priced for \$2.98 Wednesday's sale at \$2.98

Basement—Girls' All-Wool Serge Dresses for less than you would pay for materials alone. Nicely made and attractively trimmed. Shown in colors, navy, brown and cardinal and in sizes 6 to 14 years. Specially priced for \$2.98 Wednesday's sale at \$2.98

Basement—Girls' All-Wool Serge Dresses for less than you would pay for materials alone. Nicely made and attractively trimmed. Shown in colors, navy, brown and cardinal and in sizes 6 to 14 years. Specially priced for \$2.98 Wednesday's sale at \$2.98

Basement—Girls' All-Wool Serge Dresses for less than you would pay for materials alone. Nicely made and attractively trimmed. Shown in colors, navy, brown and cardinal and in sizes 6 to 14 years. Specially priced for \$2.98 Wednesday's sale at \$2.98

Basement—Girls' All-Wool Serge Dresses for less than you would pay for materials alone. Nicely made and attractively trimmed. Shown in colors, navy, brown and cardinal and in sizes 6 to 14 years. Specially priced for \$2.98 Wednesday's sale at \$2.98

Basement—Girls' All-Wool Serge Dresses for less than you would pay for materials alone. Nicely made and attractively trimmed. Shown in colors, navy, brown and cardinal and in sizes 6 to 14 years. Specially priced for \$2.98 Wednesday's sale at \$2.98

Basement—Girls' All-Wool Serge Dresses for less than you would pay for materials alone. Nicely made and attractively trimmed. Shown in colors, navy, brown and cardinal and in sizes 6 to 14 years. Specially priced for \$2.98 Wednesday's sale at \$2.98

Basement—Girls' All-Wool Serge Dresses for less than you would pay for materials alone. Nicely made and attractively trimmed. Shown in colors, navy, brown and cardinal and in sizes 6 to 14 years. Specially priced for \$2.98 Wednesday's sale at \$2.98

Basement—Girls' All-Wool Serge Dresses for less than you would pay for materials alone. Nicely made and attractively trimmed. Shown in colors, navy, brown and cardinal and in sizes 6 to 14 years. Specially priced for \$2.98 Wednesday's sale at \$2.98

Basement—Girls' All-Wool Serge Dresses for less than you would pay for materials alone. Nicely made and attractively trimmed. Shown in colors, navy, brown and cardinal and in sizes 6 to 14 years. Specially priced for \$2.98 Wednesday's sale at \$2.98

Basement—Girls' All-Wool Serge Dresses for less than you would pay for materials alone. Nicely made and attractively trimmed. Shown in colors, navy, brown and cardinal and in sizes 6 to 14 years. Specially priced for \$2.98 Wednesday's sale at \$2.98

Basement—Girls' All-Wool Serge Dresses for less than you would pay for materials alone. Nicely made and attractively trimmed. Shown in colors, navy, brown and cardinal and in sizes 6 to 14 years. Specially priced for \$2.98 Wednesday's sale at \$2.98

Basement—Girls' All-Wool Serge Dresses for less than you would pay for materials alone. Nicely made and attractively trimmed. Shown in colors, navy, brown and cardinal and in sizes 6 to 14 years. Specially priced for \$2.98 Wednesday's sale at \$2.98

Basement—Girls' All-Wool Serge Dresses for less than you would pay for materials alone. Nicely made and attractively trimmed. Shown in colors, navy, brown and cardinal and in sizes 6 to 14 years. Specially priced for \$2.98 Wednesday's sale at \$2.98

Basement—Girls' All-Wool Serge Dresses for less than you would pay for materials alone. Nicely made and attractively trimmed. Shown in colors, navy, brown and cardinal and in sizes 6 to 14 years. Specially priced for \$2.98 Wednesday's sale at \$2.98

Children's Hose Special 18c

Center Circle, Main Floor—Odd lines children's dependable Stockings, broken sizes, but all sizes in the lot; black, tan and few colors. Reg. 25c and 35c grades. 18c On sale Wednesday, pair

Women's 45c Hose, 3 pairs \$1.25. Women's Blk. Tan Silk Hose 75c

Basement—Mill seconds, with slight imperfections, on special sale at the regular factory prices. Share. \$5.00 White Wool Blankets \$3.95 \$7.50 White Wool Blankets \$5.85 \$3.50 Gray Wool Blankets \$2.45 \$4.25 Gray Wool Blankets \$3.00 \$4.75 Gray Wool Blankets \$3.40 \$6.00 Vicuna W'1 Blankets \$4.45

Bed Comforts, \$1.10—Full double bed size, with fine cotton down filling. Both sides silkolene cov'd. 15c Drapery Goods, 8c—Mill ends Drapery Goods of various kinds. Rich colorings. Lengths 1 to 10 yds. Tapestries, Portieres, \$1.59—Plain colors and fancy Oriental effects in deep rich colorings, large size. Large Size Cot. Blankets, \$1.10. Good Heavy Lace Curtains, 63c. Odd lines Cotton Curtains, ea., 33c

Basement—Mill seconds, with slight imperfections, on special sale at the regular factory prices. Share. \$5.00 White Wool Blankets \$3.95 \$7.50 White Wool Blankets \$5.85 \$3.50 Gray Wool Blankets \$2.45 \$4.25 Gray Wool Blankets \$3.00 \$4.75 Gray Wool Blankets \$3.40 \$6.00 Vicuna W'1 Blankets \$4.45

Basement—Mill seconds, with slight imperfections, on special sale at the regular factory prices. Share. \$5.00 White Wool Blankets \$3.95 \$7.50 White Wool Blankets \$5.85 \$3.50 Gray Wool Blankets \$2.45 \$4.25 Gray Wool Blankets \$3.00 \$4.75 Gray Wool Blankets \$3.40 \$6.00 Vicuna W'1 Blankets \$4.45

Basement—Mill seconds, with slight imperfections, on special sale at the regular factory prices. Share. \$5.00 White Wool Blankets \$3.95 \$7.50 White Wool Blankets \$5.85 \$3.50 Gray Wool Blankets \$2.45 \$4.25 Gray Wool Blankets \$3.00 \$4.75 Gray Wool Blankets \$3.40 \$6.00 Vicuna W'1 Blankets \$4.45

Basement—Mill seconds, with slight imperfections, on special sale at the regular factory prices. Share. \$5.00 White Wool Blankets \$3.95 \$7.50 White Wool Blankets \$5.85 \$3.50 Gray Wool Blankets \$2.45 \$4.25 Gray Wool Blankets \$3.00 \$4.75 Gray Wool Blankets \$3.40 \$6.00 Vicuna W'1 Blankets \$4.45

Basement—Mill seconds, with slight imperfections, on special sale at the regular factory prices. Share. \$5.00 White Wool Blankets \$3.95 \$7.50 White Wool Blankets \$5.85 \$3.50 Gray Wool Blankets \$2.45 \$4.25 Gray Wool Blankets \$3.00 \$4.75 Gray Wool Blankets \$3.40 \$6.00 Vicuna W'1 Blankets \$4.45

Basement—Mill seconds, with slight imperfections, on special sale at the regular factory prices. Share. \$5.00 White Wool Blankets \$3.95 \$7.50 White Wool Blankets \$5.85 \$3.50 Gray Wool Blankets \$2.45 \$4.25 Gray Wool Blankets \$3.00 \$4.75 Gray Wool Blankets \$3.40 \$6.00 Vicuna W'1 Blankets \$4.45

Basement—Mill seconds, with slight imperfections, on special sale at the regular factory prices. Share. \$5.00 White Wool Blankets \$3.95 \$7.50 White Wool Blankets \$5.85 \$3.50 Gray Wool Blankets \$2.45 \$4.25 Gray Wool Blankets \$3.00 \$4.75 Gray Wool Blankets \$3.40 \$6.00 Vicuna W'1 Blankets \$4.45

Basement—Mill seconds, with slight imperfections, on special sale at the regular factory prices. Share. \$5.00 White Wool Blankets \$3.95 \$7.50 White Wool Blankets \$5.85 \$3.50 Gray Wool Blankets \$2.45 \$4.25 Gray Wool Blankets \$3.00 \$4.75 Gray Wool Blankets \$3.40 \$6.00 Vicuna W'1 Blankets \$4.45

Basement—Mill seconds, with slight imperfections, on special sale at the regular factory prices. Share. \$5.00 White Wool Blankets \$3.95 \$7.50 White Wool Blankets \$5.85 \$3.50 Gray Wool Blankets \$2.45 \$4.25 Gray Wool Blankets \$3.00 \$4.75 Gray Wool Blankets \$3.40 \$6.00 Vicuna W'1 Blankets \$4.45

Basement—Mill seconds, with slight imperfections, on special sale at the regular factory prices. Share. \$5.00 White Wool Blankets \$3.95 \$7.50 White Wool Blankets \$5.85 \$3.50 Gray Wool Blankets \$2.45 \$4.25 Gray Wool Blankets \$3.00 \$4.75 Gray Wool Blankets \$3.40 \$6.00 Vicuna W'1 Blankets \$4.45

Basement—Mill seconds, with slight imperfections, on special sale at the regular factory prices. Share. \$5.00 White Wool Blankets \$3.95 \$7.50 White Wool Blankets \$5.85 \$3.50 Gray Wool Blankets \$2.45 \$4.25 Gray Wool Blankets \$3.00 \$4.75 Gray Wool Blankets \$3.40 \$6.00 Vicuna W'1 Blankets \$4.45

Basement—Mill seconds, with slight imperfections, on special sale at the regular factory prices. Share. \$5.00 White Wool Blankets \$3.95 \$7.50 White Wool Blankets \$5.85 \$3.50 Gray Wool Blankets \$2.45 \$4.25 Gray Wool Blankets \$3.00 \$4.75 Gray Wool Blankets \$3.40 \$6.00 Vicuna W'1 Blankets \$4.45