

# TUG MAY BE HURED

## Port Commission Will Look for Second-Hand Boat Before Building Craft.

The Port Commission is expected to charter a tug for service on the Columbia River bar to relieve the "Harrow," which may not need overhauling in view of the possibility that a new tug may not be constructed for some time. It was decided to ascertain what tugs could be obtained at San Francisco and on Puget Sound.

# HARROW TOW AVAILABLE

## Report That Portland Has Refused to Help Astoria Loosen Gravel at Mouth of Columbia River Denied in This City.

As a temporary arrangement the Port of Portland Commission expects to charter a tug for service on the Columbia River bar to relieve the "Harrow," which may not need overhauling in view of the possibility that a new tug may not be constructed for some time. It was decided to ascertain what tugs could be obtained at San Francisco and on Puget Sound.

# 2 METHODS DIFFER

## Portland Grain Sold by Sample; Sound by Certificate.

Inspection Made Here

### Shipments From This Port Require No Certificate From Chamber of Commerce Experts as Do Those of North Ports.

Figures prepared by the Portland Chamber of Commerce indicate that most of the grain shipped by this

# 2 METHODS DIFFER

## Portland Grain Sold by Sample; Sound by Certificate.

Inspection Made Here

### Shipments From This Port Require No Certificate From Chamber of Commerce Experts as Do Those of North Ports.

Figures prepared by the Portland Chamber of Commerce indicate that most of the grain shipped by this

# EXPERT TRADE GOOD

## Crop Report Starts Heavy Buying by Europe.

Much Soft Red 5 Taken

### Harvest Outlook in France Reported to Be Discouraging—Close at Chicago is Easy but Higher.

# EXPERT TRADE GOOD

## Crop Report Starts Heavy Buying by Europe.

Much Soft Red 5 Taken

### Harvest Outlook in France Reported to Be Discouraging—Close at Chicago is Easy but Higher.

# Spend Sunday at Tillamook With the Soldiers

The Third Infantry is encamped at Tillamook. Why not go down Saturday or Sunday and see the State Military Camp? You will also enjoy the grand mountain and wonderful forest scenery en route. Besides these, you can spend several delightful hours at

## Tillamook County Beaches

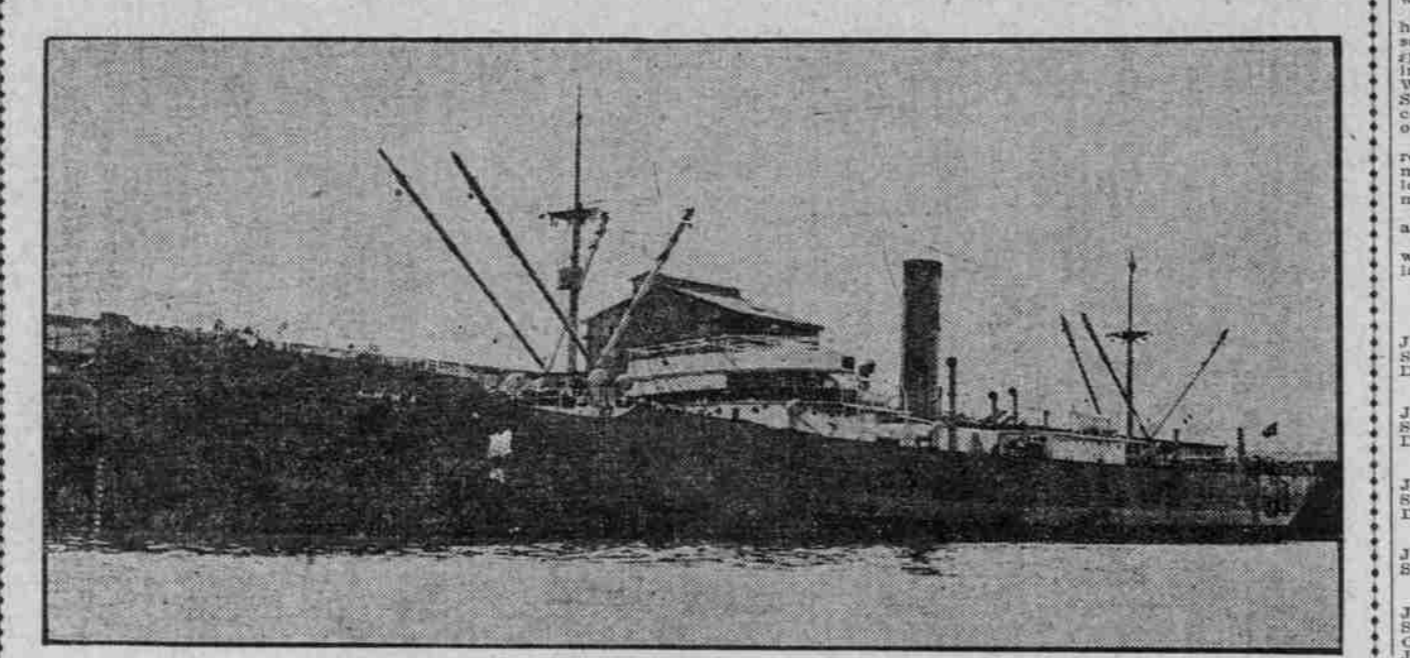
Trains leave Portland 8:45 A. M. and 1:20 P. M. via Fourth Street.

Round-Trip Week-End Saturday-to-Monday Fare, \$3.00

City Ticket Office, 80 Sixth Street, Corner Oak. Union Depot or Fourth and Yamhill.

John M. Scott, General Passenger Agent.

# MAPLE LEAF LINER SAILS FROM RIVER AT DAYLIGHT YESTERDAY WITH LUMBER AND CEREAL CARGO FOR UNITED KINGDOM.



NORWEGIAN STEAMER ARNA. Leaving here Wednesday evening, the Norwegian steamer Arna reached the lower harbor in time to cross the river and bound for the European continent via San Francisco. She is temporarily sailing in the Maple Leaf service.

# serve Navy force and they hope to participate prominently in the reception details.

Secretary Daniels comes here officially and will be entitled to a salute of 21 guns from the cruiser Boston, training ship of the militia. Save for Governor West, he will be the first to arrive here since the Boston was turned over to the state. It is not supposed that Secretary Daniels can devote much time to the Boston and her crew, because he will be here only a day when bound south, but in the absence of a regular Navy detachment some of the militia members may be called on to accord him official recognition other than in firing the prescribed salute.

# Water Superintendent Resigns.

ABERDEEN, Wash., July 10.—(Special.)—Water Superintendent S. A. ...

# STEAMER INTELLIGENCE.

Name	From	Date
Rosa-City	San Pedro	July 10
Beaver	Los Angeles	July 11
Breakwater	Cos Bay	July 12
Beaver	Los Angeles	July 13
Alliance	San Diego	July 14
Geo. W. Elder	San Diego	July 15

# port is sold by sample, while the wheat barley and oats shipped from Puget Sound ports is sold on certificate basis.

Nearly all of the certificates used on Puget Sound are issued by the Portland Chamber of Commerce and show that the shipments were inspected by the inspectors of the Portland Chamber. During the fiscal year ending June 30, 1913, the inspectors of the Chamber passed on 243 shipments from Seattle and Tacoma amounting to 2,095,674 pounds, or 2,374,159 bushels. During the same period the Chamber's inspectors passed on 162 shipments from Portland, amounting to 32,125,651 pounds, or 1,562,260 bushels. Puget Sound used virtually twice as many certificates of grain inspection than did Portland, despite the fact that Portland shipped more grain of all kinds than all of the Puget Sound ports combined.

# FALLS OF ORCHY GETS AWAY

Royal Mail Liner Takes \$100,000 Worth of Freight From Here.

With cargo she loaded here valued at about \$100,000, the Royal Mail liner Falls of Orchy left last evening from Inman-Poulsen's, bound for sea, her ultimate destination being London, but she will call at the Puget Sound and then proceed across the Pacific to Oriental harbors and Manila. She is the third carrier of that fleet to load at Portland since the establishment of the service. She will be followed shortly by the Harpalyce, which is looked for today from San Francisco.

# reka, will arrive Humboldt bar at daylight.

The Norwegian steamer Arna reached the lower harbor in time to cross the river and bound for the European continent via San Francisco. She is temporarily sailing in the Maple Leaf service.

# EUPEAN GRAIN MARKETS.

LONDON, July 10.—Cargoes on passage, quiet, but steady.

# MINNEAPOLIS GRAIN MARKET.

MINNEAPOLIS, July 10.—Close. Wheat, 1.10; barley, 1.10; oats, 1.10.

# MAZAMAS PLAN BIG OUTING

Luncheon and Picnic Will Precede Trip to Mount Adams.

The Mazamas are planning several informal gatherings in the near future, prior to their annual outing at Mount Adams August 2-7. Much interest is manifested in the outing this year, and the registrar at the headquarters in the Portland Hotel is kept busy sending and giving out information. The object of the trip is to explore the glacier and natural scenery contiguous to Mount Adams, as well as to scale the mountain.

# LENTS ASKS FOR RELIEF

City Urged to Maintain Street Lighting System.

Residents of Lents yesterday filed a petition with the City Commission asking the Portland City Council to maintain the street lighting system of that district which was made a part of Portland, July 1. Heretofore the property owners have contributed to the cost of the city's street lighting.

# WHEAT.

Month	Open	High	Low	Close
July	1.10	1.15	1.10	1.12
Aug.	1.05	1.10	1.05	1.08
Sept.	1.00	1.05	1.00	1.02

# CORN.

Month	Open	High	Low	Close
July	1.10	1.15	1.10	1.12
Aug.	1.05	1.10	1.05	1.08
Sept.	1.00	1.05	1.00	1.02

# OATS.

Month	Open	High	Low	Close
July	1.10	1.15	1.10	1.12
Aug.	1.05	1.10	1.05	1.08
Sept.	1.00	1.05	1.00	1.02

# MEAT.

Month	Open	High	Low	Close
July	1.10	1.15	1.10	1.12
Aug.	1.05	1.10	1.05	1.08
Sept.	1.00	1.05	1.00	1.02

# LAMBS.

Month	Open	High	Low	Close
July	1.10	1.15	1.10	1.12
Aug.	1.05	1.10	1.05	1.08
Sept.	1.00	1.05	1.00	1.02

# SHORT RIBS.

Month	Open	High	Low	Close
July	1.10	1.15	1.10	1.12
Aug.	1.05	1.10	1.05	1.08
Sept.	1.00	1.05	1.00	1.02

# Great Northern Railway Summer Excursions to the East

Tickets on sale daily until September 30. Going limit fifteen days from date of sale. Return limit October 31; stopovers allowed in each direction.

Atlantic City and return \$11.30 Detroit and return \$83.50  
St. Louis and return 70.00 Pittsburg and return 91.50  
Boston and return 110.00 Montreal and return 105.00

Baltimore and Washington and return \$107.50  
New York and Philadelphia and return 108.50  
Chicago and Milwaukee and return 72.50  
Denver, Colorado Springs and Pueblo and return 55.00  
Toronto, Buffalo and Niagara Falls and return 92.00  
St. Paul, Minneapolis, Duluth, Winnipeg, Omaha, Council Bluffs, Kansas City and St. Joe and return 60.00

# HEBREW SCHOOL STARTED

Poor Children May Benefit by New Jewish Institution.

A Zion Hebrew school has been started at 514 Front street for the purpose of giving a free education to poor children in history, philosophy, religion and Jewish literature.

# PRISONER'S RUSE EXPOSED

Man Thought Badly Hurt Removed From Hospital.

After lying in the hospital nearly a week, following his leap from a second-story window at detective headquarters to the pavement, 20 feet below, and having been supposed to have suffered

# BUOY AS DREDGING GUIDE

## Mid-Channel Buoy at Mouth of River to Be Retained.

Official information pertaining to changes in navigation aids was issued from the office of the Seventeenth Lighthouse District yesterday as follows:

# INSWORTH DOCK NOW FREE

## Freight Is to Be Landed on Lower Deck From Beaver.

There is a cleaning up campaign under way at Insworth dock, the lower deck of that structure having been freed of fresh water, and a crowd is engaged in hoisting off all accumu-

# RAILROADS

PORTLAND, July 10.—Sailed—British steamer Falls of Orchy, for London; steamer Kona, for Callao; steamer Coaster, for Yonkhu, for Los Angeles. Arrived—British steamer Kona, from Callao; steamer Coaster, from Yonkhu, for Los Angeles. Arrived—British steamer Kona, from Callao; steamer Coaster, from Yonkhu, for Los Angeles.

# MARINE NOTES.

Captain J. W. Shaver, dean of the Shaver Transportation Company, is to forsake river trials and tribulations today when he steps aboard the steamer T. J. Potter for a three weeks' sojourn at Long Beach. He will be accompanied by Mrs. Shaver.

# LENTS ASKS FOR RELIEF

City Urged to Maintain Street Lighting System.

Residents of Lents yesterday filed a petition with the City Commission asking the Portland City Council to maintain the street lighting system of that district which was made a part of Portland, July 1.

# BANKER SUED FOR \$50,000

La Grande Man Refuses to Settle Civil Suit to Stop Criminal.

A. B. Conley, aged 80, a wealthy banker and rancher of La Grande, Ore., who is to go to trial in Circuit Court July 16 on a criminal charge of contributing to the delinquency of a minor, in November, 1908, has been served with summons and complaint in a civil suit to recover \$50,000 as damages instituted by a relative of the girl. This suit was started in March, 1909, Leroy Lomax, a relative of the girl, was the plaintiff and Conley was the defendant.

# Veterans' Income Limit Raised.

SALEM, Ore., July 10.—(Special.)—The Board of Control today raised the limit of income of veterans of the Civil War who wish to live in the Soldiers' Home at Roseburg from \$20 to \$30 a month. This action was the result of a recent pension bill passed by Congress, which increases virtually all pensions of veterans to \$30, and which, under the old rule, would exclude old soldiers from the home.

## WEINHARD'S COLUMBIA BEER

Adds Zest to the Outing Luncheon

HENRY WEINHARD BREWERY PORTLAND, ORE.

ORDER A CASE TODAY

MAYO METHOT GETS ROLE

## CANADA LANDS

This will be one of Canada's great prosperity years. Immense crop of all kinds of grain soon to be harvested. The Calgary District is the greatest country on earth for mixed farming and wheat raising. We own and offer for sale tracts of from 150 acres up, suited to dairying, mixed farming and grain raising. You can buy either as an investment or for settlement on reasonable terms at 6 per cent. Good agents wanted everywhere. Write us today.

CALGARY, ALBERTA, CANADA. The Oldest and Largest Land Company in Alberta.