

SAWMILLS ALONG WILLAMETTE STOP

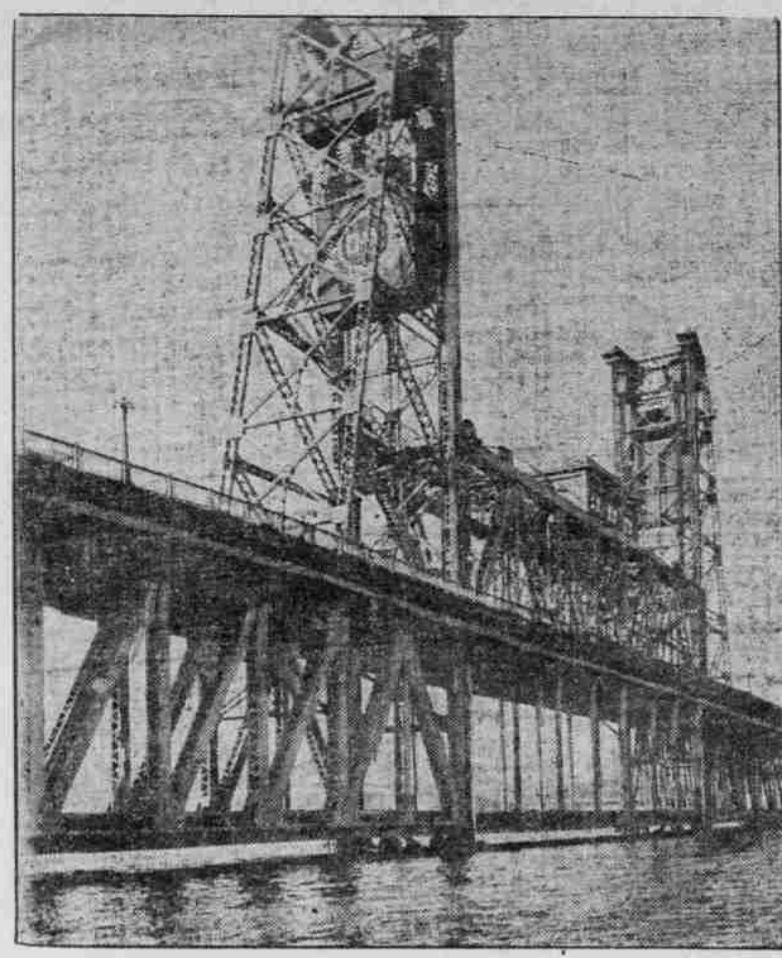
High Water Causes Shortage of Fuel and Port of Portland Dredge Is Idle.

FURTHER RISE PREDICTED

River Is Within Three Feet of Railroad Bridge—Stage of 4.2 Feet Expected Saturday—Front Street May Be Covered.

First of the industries to experience serious effects from the rising waters of the Willamette and Columbia rivers are a few sawmills. With the main plant of the St. Johns Lumber Company and that of the North Pacific Lumber Company shut down, the mill of the Peninsula Lumber Company is to be closed after today. The miller mills are reported to have ceased, also the plant of the Beaver mill at Prescott, while the West Oregon and East Side Lumber Company may be caught.

PHOTOGRAPH SHOWING HOW WATER IS NEARING LOWER DECK OF RAILROAD BRIDGE.



TUESDAY THE RIVER GAUGE SHOWED 22.1 FEET.

bids opened in the North from Montana firms and one filed at Seattle was from a British Columbia firm, specifying delivery at Manila. There was a question raised as to whether the Government or bidder would pay the duty on British Columbia oats, and information as to how that would be adjusted has not been received here. Proposals were also asked on hay, but no bids were filed by Portland houses on that. As Portland has two steamship lines operating to the Orient and Manila, fodder can be transported from here the same as from Puget Sound.

FALLS OF ORCHY IN PACIFIC

Royal Mail Liner May Reach Coast Two Days Early.

Latest details of the movement of the Royal Mail liner Falls of Orchy are that she left Yokohama for Victoria, May 31, and is looked for at Portland, June 17, about two days ahead of schedule. She will unload a small portion of her cargo there and then take on freight which was despatched from Puget Sound aboard the steamer Lord Derby, but she was damaged through striking a rock and was sent to Esquimault.

At Vancouver the Falls of Orchy is to take on 1500 tons and at Tacoma, 500 tons additional are to be loaded and she will complete here. Official advice has been received that the tariff on flour and wheat from Northwest ports to Japan will be raised, August 15, from \$3.50 a ton to \$4.50.

STEAMSHIP FARES ARE LOWER

Passenger Rate on Minnesota to Trans-Pacific Points Reduced.

SEATTLE, Wash., June 3.—The Great Northern Steamship Company, operating the big steamer Minnesota between Puget Sound, Japan, China and the Philippine Islands, today made a sweeping reduction of first cabin fares to all ports of call. The fare from Seattle to Yokohama is cut from \$200 to \$150, round trip from \$300 to \$225, and all other first-class fares are reduced in like ratio.

KEEPERS THROWN ON ROCKS

Tillamook Rock Tender Smashed in Tussle With Breakers.

In a telegram received at the headquarters of the Seventeenth Lighthouse District yesterday it was made known that Keeper Dahlgren, of Tillamook

STEAMER INTELLIGENCE

Table with columns: Name, From, Date. Lists various steamers and their routes.

Men From Northwest to Be Sent via Portland to Mare Island.

Captain William Britchett, United States Marine Corps, commanding the Mare Island and under the former arrangement men enlisted at Portland were ordered to Seattle to be re-inspected by Captain Britchett and he in turn sent them over the same route to this city, and then on to Mare Island. Now men from Spokane and Puget Sound will come here direct after inspection by the recruiting officers, and if found desirable by the commanding officer, will proceed to Mare Island. Three men passed through from Spokane yesterday and there will be a steady movement from Portland each week. The Navy Department has authorized a recruiting office here for nearly two years with encouraging results.

BIDS OPENED ON MANILA OATS

Portland Firm Offers Fodder on Lower Basis Than Puget Sound.

One Portland bidder participated in competition with firms on Puget Sound, in Montana and in British Columbia for supplying 3000 tons of oats to the Government for the use of the military forces in the Philippines. Tenders having been opened at the office of Colonel A. W. Yates, quartermaster department, yesterday. Albers Brothers filed a tender of \$1.71 for 1500 tons of oats, August delivery, and \$1.61 for 1500 tons if delivery was made in September, or \$1.71 for 3000 tons delivered in August. Puget Sound bidders offered to deliver oats in August at \$1.75 and after September 15 at \$1.62 1/2. There were

SOCIETY OUT TODAY

Tournament to Open at Waverly Country Club.

PUTTING CONTEST DAILY

Those Arranging Affair Today Argue Mrs. Antoine G. Labbe, Mrs. D. McGregor and Mrs. Leo Hawley Hoffman — Others Named.

Smart society will be much in evidence today at the Waverly Country Club where the big golf tournament of the year will open. Much interest is being shown in the contest, each of the participants having a number of friends who will watch the games enthusiastically. Besides the regular golf tournament there will be a putting contest every afternoon. These will be in charge of a different committee each day.

The Daughters of the Confederacy entertained yesterday at an elaborate luncheon at the Hotel Portland. The tables were decorated with red and white roses and carnations, mingled with anaparras fern. Mrs. Leos Moss, president, acted as toast mistress. Following the repast, a short programme was enjoyed. Among the speakers were Mrs. Moses, Mrs. John Nissen, all of whom took various phases of the subject of Thomas Jefferson as their subject.

CANAL DREDGES ARE WANTED

Astoria to Ask Government for Machines Used in Panama.

ASTORIA, Or., June 3.—(Special.)—Convinced that dredging is the feasible means of securing and maintaining an adequate depth of water in the channel across the Columbia River bar, the Port of Astoria Commission at its meeting today decided to ask the Government either to assign one or more of the dredges used in the construction of the Panama Canal to this port or build new dredgers of the most modern type for work on the bar.

Movements of Vessels.

PORTLAND, June 3.—Arrived—Steamer Jim Butler and Merced, from San Francisco. Astoria, June 3.—Left up at midnight, steamer Jim Butler. Arrived at 11:30 a.m. at 6 A. M. steamer Merced, from San Francisco. Sailed at 8:15 A. M. steamer Saginaw, for San Francisco. Arrived at 7 P. M. steamer General Hubbard, from San Pedro. Arrived at 6 A. M. steamer Beaver, from Portland. Sailed at 1 P. M. steamer Sample E. H. Leggett, from Portland. Arrived at noon, steamer Rose City, from San Pedro. Arrived at 6 A. M. steamer Willapa and Rochelle, from Portland. Sailed, steamer Olympia, for Portland. Sailed, steamer George W. Fenwick, for Columbia River.

EUROPEAN RESORTS AND HOTELS

Advertisement for BELGIUM EUROPE IN MINIATURE. Features a miniature model of Belgium in Ostend. Text includes: 'Europe in Miniature', 'Visit Brussels, the Belgian Paris...', 'Tournai', 'Ghent International Exhibition 1913', 'Ostend Hotel Metropole', 'Brussels Palace Hotel'.

Wiesbaden PALACE HOTEL WITH THERMAL BATHS

The RHINE

there will be a reception at the family home, 774 Northrup street, from 12:30 until 2 o'clock. Harry E. Fisher and George H. Fisher, house guests of Mrs. P. N. Stoppenbach for the past fortnight, left for their home in Toledo, O., Monday. Before coming to Portland the Fishers traveled extensively through the Southern States. Miss Dorothy Clark, Mrs. Stoppenbach's niece, who passed the winter in Portland, left for the East with Mrs. Fisher.

J. K. Mahoney entertained a few friends with a dancing party Saturday evening at his new home in Waverly. High Helms, H. Harold Hurn, who leaves soon for an extended visit through the Eastern States and Canada, was the honor guest. The invitation list included the Mesdames E. H. Buchanan, Walter Peters, Elmer Strayer, Willis Mahoney, D. J. Mahoney, the Misses Gertrude Atcheson, Katherine Fallon, Rena Herrick, Elizabeth McClelland, Adah Young, Doris Stanley, Catherine Parkinson, Ruth Atcheson and Messrs. Harold Hurn, Herbert Hurn, Samuel Goodland, Arthur Rossmann, Stanley Boone, Ray Buchanan, James Walker, Walter Peters, Elmer Strayer, Harry Olsen, Willis A. Mahoney.

Mr. and Mrs. C. C. Richards announce the engagement of their daughter, Miss Cecelia Richards, to Edward D. Dundas. The wedding will take place this month. The Snooker-look-ums Club will give their first annual boating party Friday evening. The patronesses for the evening will be Mrs. Edward Morrow and Mrs. Charles Halsey. The committee includes Miss Allee Morrow, Miss Helen Ford, Miss Clea Townsend, William Halsey, William West and Raymond Hill.

The "L" Society of the Lincoln High School, composed of the latter men of the club present were Marion Mulkey, Lowell Faget, William Cook, Paul Cudlipp, Harold Wolverson, Walter Tannasee, E. R. Holt, Xavier Clerin, Morle Rousselet, Earl R. Goodwin, William Krause, William McClelland, Alfred Schilt, Frank Busch, and William Lewis.

Dr. Herman J. Harris left yesterday for a trip to the East and will be absent a month. Miss Marjorie Forbis will entertain tomorrow at a theater party and luncheon in honor of Miss Louise M. Williams.

European Resorts

Advertisement for GRAND HOTEL LONDON. Text includes: 'Facing the New Admiralty Arch', 'One minute from Charing Cross Station—starting point for Continental travel—', 'Facing the New Admiralty Arch', 'Facing the New Admiralty Arch'.

South Eastern & Chatham Railway of England

THE ROYAL MAIL ROUTES

To the Continent. THE LAND OF DICKENS. Dover to Calais. 55 Mins. Folkestone to Boulogne. 75 Mins. Lying between Gravesend and Rochester should be visited by all Americans. Also visit the Catharine City of Canterbury, and travel thence to Dover, Folkestone or Queensbury for the Continent. Full details mailed free of charge on application to C. Baker, Agent (S. E. & C. Ry.), 324 21st Avenue, New York. FRANCIS H. DENT, Gen. Man.

RED DENIES SLAYING SQUAW

Columbia George, Umatilla Indian, to Be Tried at Pendleton. Columbia George, a Umatilla Indian, yesterday pleaded not guilty on arraignment before Judge Ben in Federal Court on a charge of murdering Ti-Mot, a squaw of the same tribe. His trial has been set for June 10 at Pendleton, where 30 jurors have been impaneled to report for service. Judge Bean, one of the clerks of the court, and a United States Marshal will go from Portland to participate in the trial.

YOU CANDIDATES.

Successful or otherwise, will find Gearhart "By-the-Sea" a delightfully restful spot to recuperate. Hotel always open. Cuisine unexcelled. Best select site for cottages. Special inducements now. See us at 1003 4th street.

European Resorts

Advertisement for GRAND HOTEL LONDON. Text includes: 'Facing the New Admiralty Arch', 'One minute from Charing Cross Station—starting point for Continental travel—', 'Facing the New Admiralty Arch', 'Facing the New Admiralty Arch'.

South Eastern & Chatham Railway of England

THE ROYAL MAIL ROUTES

To the Continent. THE LAND OF DICKENS. Dover to Calais. 55 Mins. Folkestone to Boulogne. 75 Mins. Lying between Gravesend and Rochester should be visited by all Americans. Also visit the Catharine City of Canterbury, and travel thence to Dover, Folkestone or Queensbury for the Continent. Full details mailed free of charge on application to C. Baker, Agent (S. E. & C. Ry.), 324 21st Avenue, New York. FRANCIS H. DENT, Gen. Man.

RED DENIES SLAYING SQUAW

Columbia George, Umatilla Indian, to Be Tried at Pendleton. Columbia George, a Umatilla Indian, yesterday pleaded not guilty on arraignment before Judge Ben in Federal Court on a charge of murdering Ti-Mot, a squaw of the same tribe. His trial has been set for June 10 at Pendleton, where 30 jurors have been impaneled to report for service. Judge Bean, one of the clerks of the court, and a United States Marshal will go from Portland to participate in the trial.

YOU CANDIDATES.

Successful or otherwise, will find Gearhart "By-the-Sea" a delightfully restful spot to recuperate. Hotel always open. Cuisine unexcelled. Best select site for cottages. Special inducements now. See us at 1003 4th street.

Advertisement for Instant Postum. Text includes: 'Wife and I Are Friends of INSTANT POSTUM', 'There's a Reason', 'I used to drink coffee—was nervous and irritable. Wife said so.', 'So when the new food-drink, Instant Postum, came along she said to herself, "Here's where I break Jack of the coffee habit."', 'Instant Postum is good stuff. I sleep better, smile more, and miss my indignation.'', 'A level teaspoonful of Instant Postum in an ordinary cup of hot water dissolves instantly and makes it right for most persons.', 'A big cup requires more and some people who like strong things put in a heaping spoonful and temper it with a large supply of cream.', 'Experiment until you know the amount that pleases your palate and have it served that way in the future.', 'Postum comes in two forms.', 'Regular Postum (must be boiled).', 'Instant Postum doesn't require boiling, but is prepared instantly by stirring a level teaspoonful in a cup of hot water.'

Advertisement for Do You Pay It or Get It? Text includes: 'Which are you, a man who is paying out rent every month, or a man who is receiving rent every month?', 'Don't let anybody fool you on this rent question. Don't let anybody tell you it is cheaper to rent than to own.', 'The people who get rich in this world are the people who are constantly getting their expenses down—not those who are getting their salaries up.', 'Don't worry about the upkeep of your property. The natural increase in its value will take care of the upkeep again and again.', 'Don't forget this: The difference between the man who is paying twenty-five dollars a month rent and the man who is receiving twenty-five dollars a month rent is fifty dollars a month.', 'Get your own property. Get your own home. If you can't build an eight-room house make it four. If you can't live in a house get a tent. But whatever you have, own it. That's the way to get rich.', 'Over in the Want Ads of this paper, the Real Estate columns are filled with opportunities for you.', 'Almost anyone can own property these days. And property is the one investment where the rich man and the poor man are on equal terms.', 'Don't let this Summer get by without making some investment in Real Estate. Wherever there is a subdivision of property there is an opportunity for you.', 'Read and answer these Real Estate Ads in the Want Ad columns of this paper. Get in touch with the Real Estate people of this city. And you will share in the progress and advancement of this city.', 'And mention The Oregonian please each time you answer an Ad.'

