

VERACITY OF BUNCO MEN IS ATTACKED

Sharp Clashes Feature San Francisco Police Graft Charge Hearing.

CONVICT BATTLE CENTER

"You Are a Professional Liar, Aren't You?" Asks Attorney for Former Detective Accused of Collusion With Criminals.

SAN FRANCISCO, May 28.—Lively clashes between counsel for the defense and the District Attorney's assistants and a determined effort of the former to discredit the veracity of bunco men...

CONTROL FIGHT IS SEEN

Receivership Proceedings of Frisco Line Has New Angle.

ST. LOUIS, May 28.—James Campbell, vice-president of the St. Louis and San Francisco, and chairman of the North American...

STRIKE VOTE ORDERED

TRAINMEN OF EAST TO DECIDE THEIR OWN ACTION.

ATTENDANTS' DUTIES FIXED

City Employees at Comfort Station Must Meet Emergencies.

MYRTLE CREEK HAS FIRE

Blaze of Unknown Origin Does Damage Estimated at \$8000.

BLUE AND GRAY TO MINGLE

State Officials Arranging Trip to Gettysburg Battlefield.

CHORAL SINGING IS FINE

Mrs. Hahn Effective in Solos in Oratorio, "The Holy City."

Holy City. An excellent rendition was given the choral singing, being marked by good ensemble effect, with due attention to expression and shading.

COBURN FUNERAL TODAY

SERVICES TO BE HELD AT UNITARIAN CHURCH.

Prominent Citizens to Act as Honorary Pallbearers and Relatives to Be Active Bearers.

The funeral of Mrs. C. A. Coburn, one of the prominent pioneer women of the state, who died at her home at 684 West...

CONTROL FIGHT IS SEEN

Receivership Proceedings of Frisco Line Has New Angle.

ST. LOUIS, May 28.—James Campbell, vice-president of the St. Louis and San Francisco, and chairman of the North American...

STRIKE VOTE ORDERED

TRAINMEN OF EAST TO DECIDE THEIR OWN ACTION.

ATTENDANTS' DUTIES FIXED

City Employees at Comfort Station Must Meet Emergencies.

MYRTLE CREEK HAS FIRE

Blaze of Unknown Origin Does Damage Estimated at \$8000.

BLUE AND GRAY TO MINGLE

State Officials Arranging Trip to Gettysburg Battlefield.

CHORAL SINGING IS FINE

Mrs. Hahn Effective in Solos in Oratorio, "The Holy City."

MORGAN TREASURES WILL BE EXHIBITED

Insurance Policies Totaling \$40,000,000 Protect Famous Art Collection.

REAL VALUE IS UNKNOWN

Pieces to Be Shown to Public Will Total 4100—Numbers of Paintings Are Now Held in the London Art Gallery.

NEW YORK, May 28.—(Special.)—Although the precise value of the Morgan art collection at the Metropolitan Museum was not obtainable today, it was learned that it had been insured by J. P. Morgan as executor of his father's will for \$20,000,000.

SEATTLE PLANS STOCKADE

Lazy Husband's Law Goes Into Effect on June 6.

SEATTLE, Wash., May 28.—(Special.)—Preparing to enforce the lazy husband's law on June 6 and to provide work for other county prisoners, Sheriff Edward Cuddehe and the Board of Commissioners are arranging for the construction of a stockade on 45 acres of county land north of Seattle.

FIRE AUTO CAR HITS BOY

Johnny Meyers Sustains Double Fracture of Leg, but May Live.

PRINTERS ELECT OFFICERS

Bill Fixing Salary of Secretary-Treasurer Defeated.

NECK BROKEN; MAN WORKS

In Plaster Cast, Victim at Business Ten Days After Accident.

STUMP BLASTING FATAL

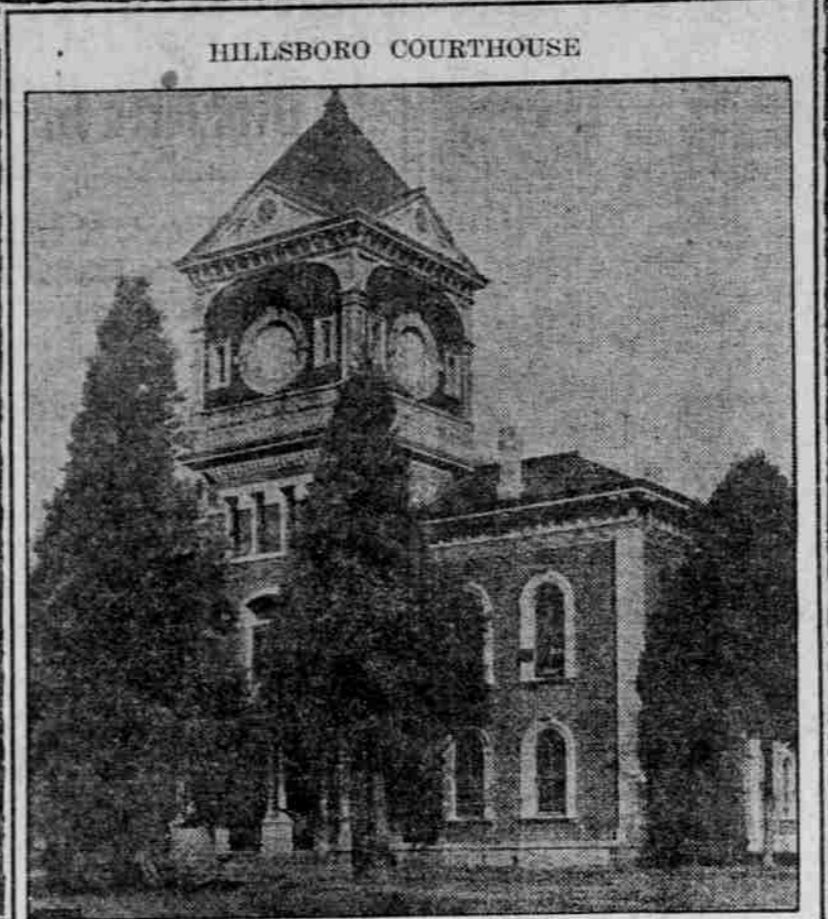
Son of Pioneer Summerville Resident Meets Quick Death.

M. K. MacRae Convalescing.

New well on the road to recovery after his rough experience in a trolley mixup last month, M. K. MacRae, resident manager of the Hotel Oregon, has returned from Shipyard Springs, Skamania County, and has resumed his hotel duties. He was partially paralyzed in the crash, but is recovering the use of his muscles.

WHY NOT VOTE FOR WM. C. BENBOW

Why not vote for Wm. C. Benbow (No. 25) for Commissioner. He was one of the men who drafted the new charter. (Paid adv.)



Invest Your Money Where the Factors Making for Prosperity Are in Existence Today

When you are buying a suit of clothes you don't select one on the salesman's promise that "SOME DAY it will be all right," do you? You want YOUR VALUE NOW—not tomorrow, not at some future time. Why not let this principle guide you in realty investments? Buy property that, TODAY, POSSESSES THE FACTORS THAT MAKE ITS VALUE. Buy in an established center—buy where the growth IS—not where it may be some time.

Investigate—Compare

Compare the price of Hillsboro property with the price of lots centrally located in any other city of three thousand population with which you are familiar—compare it with the prevailing prices of lots in locations where cities are PREDICTED and you will find Hillsboro in every case presents an opportunity unequalled in any locality.

Hillsboro Is on Three Transportation Lines—Has Prosperous Factories, Busy Stores, Good Schools, Fine Homes.

Hillsboro is a residential city of exceptional beauty and charm—it has many busy factories, every city convenience and is just far enough away from Portland to enjoy the advantages of a city with the pleasures of suburban life.

Home Sites a Block from the Courthouse \$90 and up.

Our property is just a block from the Courthouse—on three transportation lines. Land is level and slightly, is completely surrounded by attractive, high-class homes and many beautiful places are now on the property. We will take you down any time suiting your convenience. Call up Main 8770 and let us know when you care to go.

Excursion Sunday—Tickets at Our Office

Smith-Wiloughby Co. 90 Fifth street, Portland, Oregon

Orpheum last night. Banners of the club decorated the boxes and a feature was the magnificent basket of pink roses which went over the footlights to Miss Cecilia Loftus with the compliments of the club.

Firemen's Pension Fund Favored.

A resolution indorsing the proposed firemen's relief and pension fund, which is to be decided at the election on June 2, was unanimously adopted last night at the regular meeting of the East Twenty-eighth Street Improvement Association.

FLOWERING PLANTS For Decoration Day

Cut flowers are unusually scarce and high. Why not buy some plants in full bloom? They are beautiful now and will continue to bloom all Summer. See them at our store.

Beautiful White Lilies.....\$1.00 ea. per pwt. Handsome White Hydrangeas.....\$2.00 Geraniums—White, Pink and Red; Specimen Plants, 25c ea. Single and Double Petunias, extra large.....25c and 50c

Cemetery Vases

Cone-shaped Green Tin.....10c ea. New Crystal Glass and Matt, green, 25c Flowering Bedding Plants of all kinds Store open until noon Decoration Day

Store Open Until Noon Decoration Day

All cemetery cars leave within a block of our store

Routledge Seed & Floral Co. 169 SECOND ST. PORTLAND, ORE.

On the delivery department hinges the life of your entire organization. The increased speed and efficiency of delivery with

WHITE MOTOR TRUCK

is felt in the increased energy throughout your entire business. Let us show you how.

The White Company

E. W. HILL, Mgr. In the Business District 69 BROADWAY for Your Convenience

Coca-Cola advertisement featuring a man in a white shirt and dark pants, holding a glass of Coca-Cola. Text includes: 'You, All Know "Koney" of the Cardinals', 'First sacker—big hitter—shrewd head; the player who gets what he goes after in every line. Ask him about Coca-Cola', 'He drinks it—he likes it—he believes in it as the one most refreshing and most wholesome drink for thirsty ball players.', 'Do What "Koney" Does—Drink the Drink the Nation Drinks', 'Demand the Genuine—Refuse Substitutes', 'THE COCA-COLA COMPANY, ATLANTA, GA.'

Fit for a King's table

A tomato bisque made from Campbell's Tomato Soup. This soup is prepared from selected ripe Jersey tomatoes, rich in natural sugar, and seasoned just enough to bring out perfectly their delicious freshness and flavor.

It blends with milk or cream smoothly without curdling. And by following the simple directions on the label, you can produce this delightful bisque easily in three minutes. A more tempting and wholesome delicacy was never served.

Try it for dinner, and you'll say so too.

21 kinds 10c a can Look for the red-and-white label

Campbell's Soups

GET BACK TO NATURE At Metzger, the beautiful little townsite in the Tualatin Valley, on main line of Oregon Electric Excursion train leaves Jefferson-street station next Sunday, 10 A. M. Round trip fare and lunch, 25c. Tickets and information 722 Yeon Bldg.

"Jes Like the Seashore"

Tommy: "It's better'n the seashore—the lectric fan breeze is cooler." Mary: "Yes—Jes so, and we don't have to go away from home to get it."

G-E Electric Fans furnish Cooling Breezes for less than a cent an hour. We handle all styles and sizes—they are The Leaders of the Market.

Portland Railway, Light & Power Company

ELECTRIC STORE, Broadway and Alder Streets. Phones: Marshall 5100 A 6131

YALE PAINLESS DENTISTS

ENTIRE CORNER OF MULKEY BUILDING AT THE NORTHEAST CORNER SECOND AND MORRISON STREETS Dentistry That Lasts

Is our motto. Only the best materials used. No students employed at this office. Plates up from \$5.00 and Bridge Work per tooth, \$3.50 to \$5.00.

EIGHT YEARS IN PORTLAND—NOT IN THE DENT—TRUST—ALL WORK GUARANTEED