

WAGON CRUSHES DRIVER; STARTS SOON

Harbor Officials Decide to Undertake Work in Vicinity of Swan Island.

MORE SHIP ROOM SOUGHT

Action Also Taken Toward Disposing of Bond Issue for Public Docks.

Definite action was taken yesterday afternoon looking to an improvement of the harbor in the vicinity of Swan Island by eliminating a portion of the lower end to give a greater room and provide a basin at the upper end, also deepening the west channel for the accommodation of ocean-going vessels.

Next of the important matters up for disposal was the proposed issue of \$1,250,000 of bonds to fund the work provided for taking title for public docks when condemnation proceedings are terminated, also to start preliminary construction.

It has been agreed by the Fire Department executives that the most desirable place is between the Western and Alameda dock properties, where the West Side approach of the old Steel bridge rested.

When the monthly directors' meeting of the Northern Pacific Terminal Company is convened April 1, the Commission will be on hand to take up a proposition of securing common-user privileges on Front street.

SPECIAL CAR FOR ALIENS

Government Sends 12 Aliens to Atlantic for Deportation.

In accordance with special arrangements made by J. H. Barbour, United States Immigration Inspector, a combination tourist car that will leave the asylum at Salem with seven insane aliens and three aliens serving time in the penitentiary.

RUDEN TAKES THE BAYOCEAN

To J. Ruden, first officer of the steamer Geo. W. Elder, has been delegated the responsibility of navigating the gasoline passenger yacht Bayocean from Tillamook Bay to San Francisco.

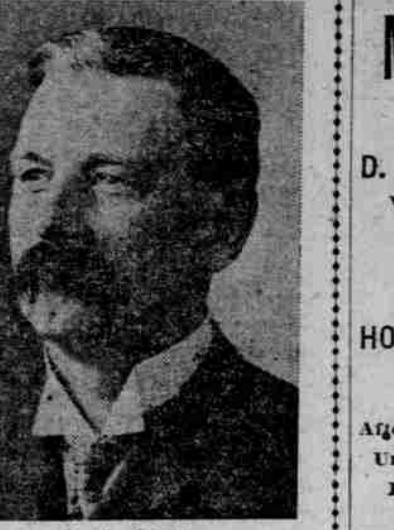
NEW HEAD OF PORTLAND SCHOOLS AND MEN WITH WHOM HE WILL WORK



L. R. Alderman, Elected Superintendent.



Frank Risler, Who Heads Special Department.



E. A. Grant, Assistant Superintendent.

will be placed in condition for sea. Henry Cave, chief engineer of the line, will superintend the preparations.

CROWN OF SEVILLE IS HERE

Returning from a side trip to Victoria, B. C., the British steamer Crown of Seville, rated as embodying the latest in appliances for tramp steamers, reached the river yesterday afternoon and will be in the harbor today to start loading for the Orient and Manila under charter to Balfour Guthrie & Co.

ALDERMAN CHOSEN

New Superintendent Is Named for One-Year Term.

SALARY INCREASE DENIED

Owing to Opposition in School Board to State Official, Compromise Results and Pay Remains at \$4500 Annually.

Mr. Alderman's official term will commence July 1, when Mr. Rigler will leave office and assume his new duties.

HAZEL DOLLAR'S CARGO BIG

Willapa Harbor Houses Largest Vessel Ever Crossing Bar.

MOVEMENTS OF VESSELS

PORTLAND, March 25.—Arrived—Steamship Multnomah, from Eureka and Coos Bay.

RIVER TRAFFIC HAMPERED

LEWISTON, Idaho, March 25.—(Special.)—The steamer Spokane, of the O. W. R. & N. Company's river line was tied up today.

MARINE NOTES

Lumber for Australia will go aboard the British tramp Inveran at the North Pacific mill, as she shifted to a berth there last night from Rainier.

TIDES AT ASTORIA WEDNESDAY

3:11 A. M., .93 feet; 10:10 A. M., .62 feet; 4:11 P. M., .69 feet; 9:56 P. M., .26 feet.

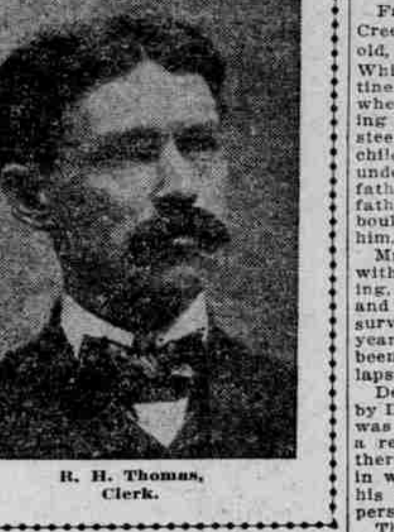
WEST WITHHOLDS DECISION

Governor Undecided as to Who Will Succeed Alderman.

SALEM, Or., March 25.—(Special.)—Governor West tonight said he has reached no decision as to who shall be



C. A. Rice, Assistant Superintendent.



R. H. Thomas, Clerk.

APPOINTED TO SUCCEED L. R. ALDERMAN

Superintendent of Public Instruction.

ASTORIA, Or., March 25.—(Special.)—Notice was received at the Customhouse today from the Secretary of Commerce that the fine of \$500, recently imposed by Collector McGregor on the steamer Haasalo, who charged that the Bangor, while lying at anchor off Rainier, had failed to ring her fog bell or display lights from the rafts and barges moored alongside her.

CUSTOMS FINE REMITTED

Secretary of Commerce Renders Decision in Favor of Bangor.

ASTORIA, Or., March 25.—(Special.)—Notice was received at the Customhouse today from the Secretary of Commerce that the fine of \$500, recently imposed by Collector McGregor on the steamer Haasalo, who charged that the Bangor, while lying at anchor off Rainier, had failed to ring her fog bell or display lights from the rafts and barges moored alongside her.

MANY POSITIONS HELD

Immediately after his graduation he began teaching school and successfully filled posts at various places in the western part of the state, including Brownsville and McMinnville. Later he was elected Superintendent of the Yamhill County schools and then City Superintendent at McMinnville. It was while serving in that position he introduced the agricultural fairs for schoolchildren.

MOVEMENTS OF VESSELS

PORTLAND, March 25.—Arrived—Steamship Multnomah, from Eureka and Coos Bay.

RIVER TRAFFIC HAMPERED

LEWISTON, Idaho, March 25.—(Special.)—The steamer Spokane, of the O. W. R. & N. Company's river line was tied up today.

MARINE NOTES

Lumber for Australia will go aboard the British tramp Inveran at the North Pacific mill, as she shifted to a berth there last night from Rainier.

TIDES AT ASTORIA WEDNESDAY

3:11 A. M., .93 feet; 10:10 A. M., .62 feet; 4:11 P. M., .69 feet; 9:56 P. M., .26 feet.

WEST WITHHOLDS DECISION

Governor Undecided as to Who Will Succeed Alderman.

SALEM, Or., March 25.—(Special.)—Governor West tonight said he has reached no decision as to who shall be

WAGON CRUSHES DRIVER; MAN AND SON DEAD

D. J. MacCreedy and Four-Year-Old Leo Crushed on White House Road.

HORSE FALLS ON FATHER

After Accident Boy Is Smothered Under Load of Compost—Only Eye-Witness Struggles in Vain to Lend Aid in Time.

Father and little son, Delbert J. MacCreedy and Leo, the latter only 4 years old, met simultaneous death on the White House road at the foot of Palatine Hill, south of the city, yesterday, when a wagon in which they were riding overturned and tumbled down a steep bank 12 or more feet high.

EUROPEAN RESORTS AND HOTELS

ENGLAND. ENGLAND. Where to Stay on the other Side! HOTEL RUSSELL LONDON

GO TO HOLLAND

in 1913. The Hague Hotel Castle Wassenaar. AMSTERDAM DOELEN HOTEL

PARIS HOTEL CHATHAM

19 RUE DAUNOU. Between Rue de la Paix and the Grand Boulevard.

THE RHINE

DRESDEN HOTEL BELLE VUE. WIESBADEN PALACE HOTEL WITH THERMAL BATHS

TRAVELING A PLEASURE

Why dread a transcontinental trip? Such a trip can be made with comfort and pleasure.

THE CANADIAN PACIFIC RAILWAY

Science nowadays can digest food without having it enter the stomach at all. All that is necessary is to take Stuart's Dyspepsia Tablets.

WHY DREAD A TRANSCONTINENTAL TRIP?

Such a trip can be made with comfort and pleasure. Nowhere else in America—old globe trotters say nowhere else in the world—is there a scenic tour to compare with the Canadian Pacific.

THIS IS THE ONLY TRANSCONTINENTAL LINE WITHOUT A DESERT

The only streak of wonder-trail on earth where chain after chain of mountains merge. It's the birthplace of the hills, and Cascades, Sierras, Rockies, Spillimachene, Ottertail, Beaverfoot and Van Horne Ranges merge and lap for 700 miles of wonderland.

For rates, descriptive matter and full particulars apply at Third and Pine (Multnomah Hotel Bldg.) or address FRANK R. JOHNSON, G. A. P. D., Portland, Or.

THIS STATEMENT, OF INTEREST TO ALL MADE BY WELL-KNOWN BUSINESS WOMAN

Mrs. Alma Holm Has Used the New Tonic, Plant Juice, and Recommends It Highly.

Once upon a time in the long ago women were too timid, too intimidated to express themselves in print, this has all been changed now and women no



Mrs. Alma Holm.

longer feel any hesitancy in saying what they think, some of the best testimonials that we have had have been from women, these testimonials are not confined to any one class, but come from all walks of life.

Improvement programme under consideration. Glencoe School Folk to Meet.

EUROPEAN RESORTS AND HOTELS

ENGLAND. ENGLAND. Where to Stay on the other Side! HOTEL RUSSELL LONDON

GO TO HOLLAND

in 1913. The Hague Hotel Castle Wassenaar. AMSTERDAM DOELEN HOTEL

PARIS HOTEL CHATHAM

19 RUE DAUNOU. Between Rue de la Paix and the Grand Boulevard.

THE RHINE

DRESDEN HOTEL BELLE VUE. WIESBADEN PALACE HOTEL WITH THERMAL BATHS

TRAVELING A PLEASURE

Why dread a transcontinental trip? Such a trip can be made with comfort and pleasure.

THE CANADIAN PACIFIC RAILWAY

Science nowadays can digest food without having it enter the stomach at all. All that is necessary is to take Stuart's Dyspepsia Tablets.

WHY DREAD A TRANSCONTINENTAL TRIP?

Such a trip can be made with comfort and pleasure. Nowhere else in America—old globe trotters say nowhere else in the world—is there a scenic tour to compare with the Canadian Pacific.

THIS IS THE ONLY TRANSCONTINENTAL LINE WITHOUT A DESERT

The only streak of wonder-trail on earth where chain after chain of mountains merge. It's the birthplace of the hills, and Cascades, Sierras, Rockies, Spillimachene, Ottertail, Beaverfoot and Van Horne Ranges merge and lap for 700 miles of wonderland.

For rates, descriptive matter and full particulars apply at Third and Pine (Multnomah Hotel Bldg.) or address FRANK R. JOHNSON, G. A. P. D., Portland, Or.