

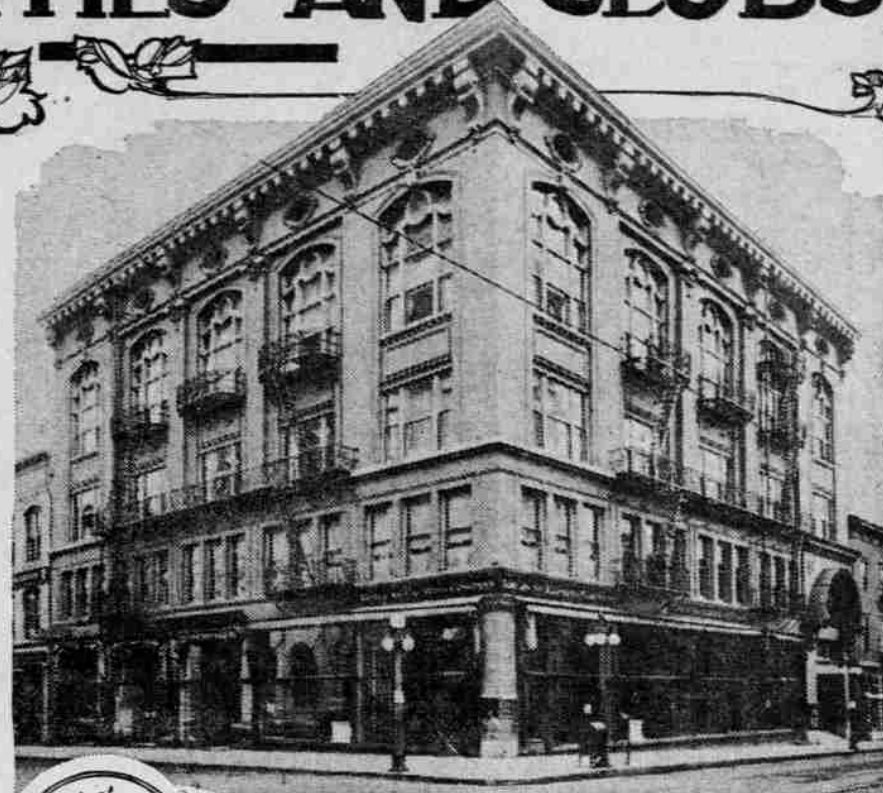
# HOMES OF PORTLAND FRATERNITIES AND CLUBS



Arlington Club, Park and Salmon Streets



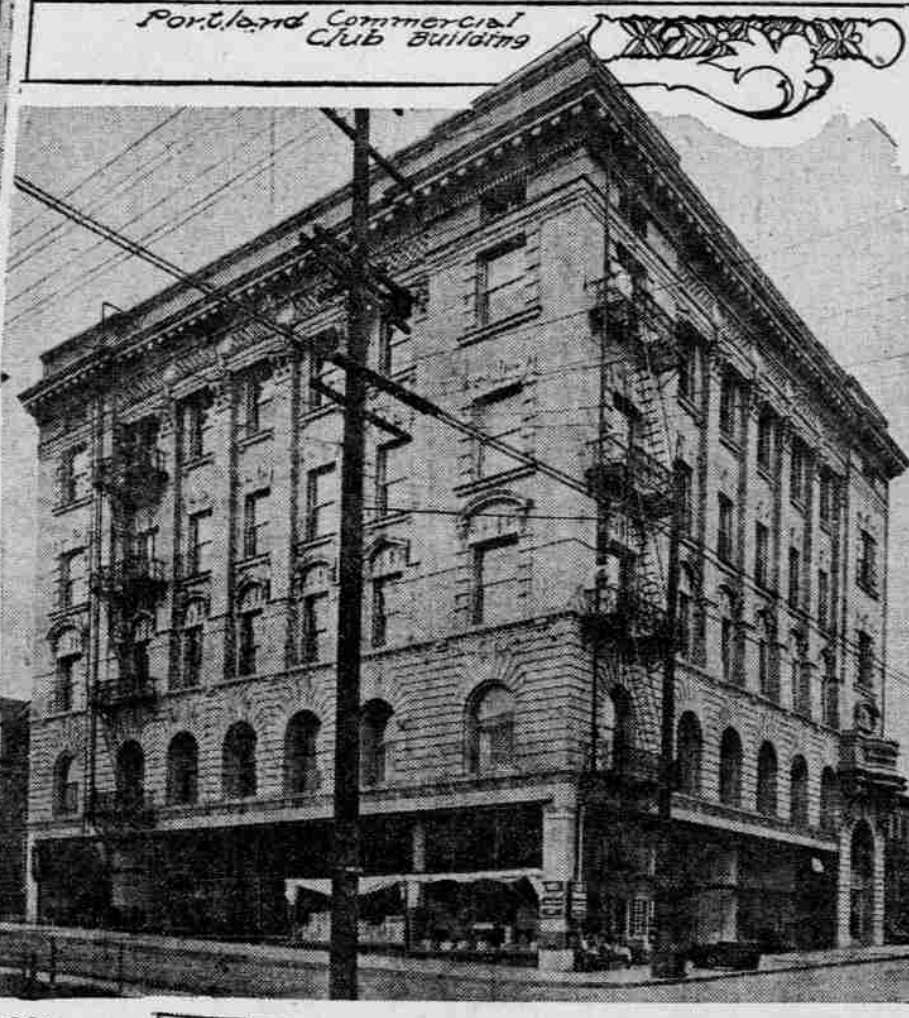
Portland Commercial Club Building



Elks' Temple, Seventh and Stark



Women of Woodcraft, Wood and Taylor Streets



Knights of Pythias, Eleventh and Albin Streets

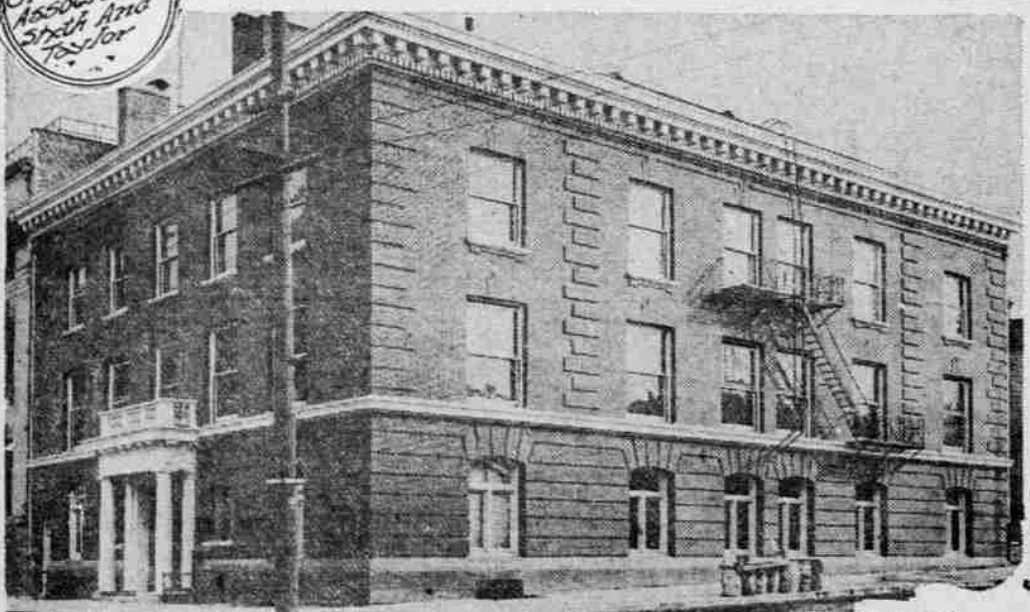


Young Men's Christian Association, Sixth and Taylor

Masonic Temple, Park, Wood and Yamhill Streets



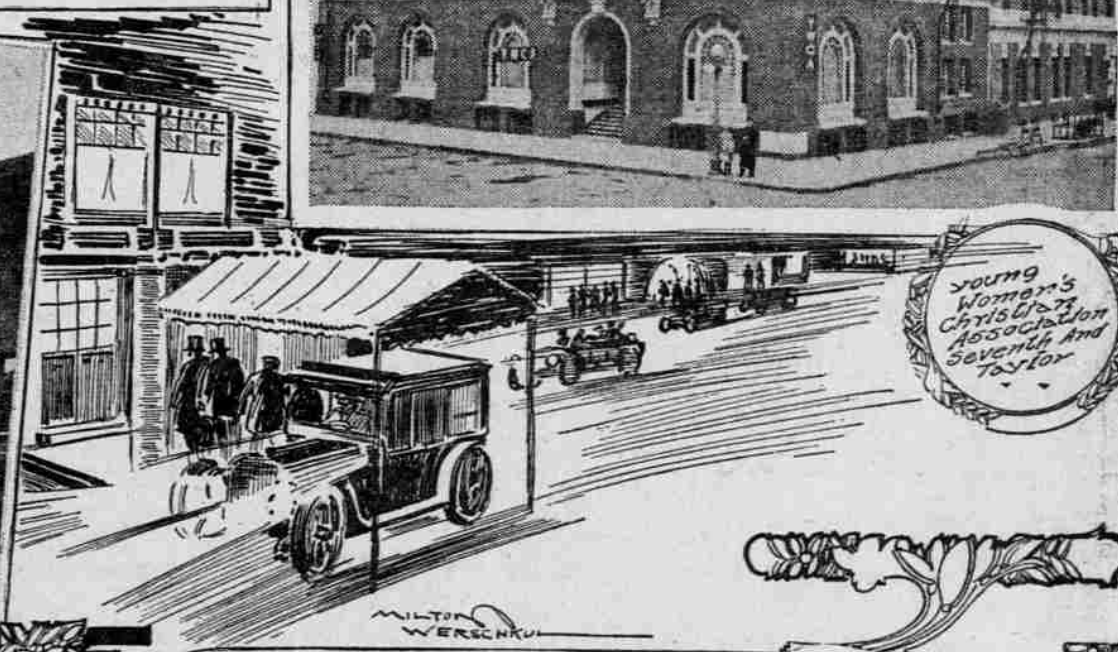
Young Women's Christian Association, Seventh and Taylor



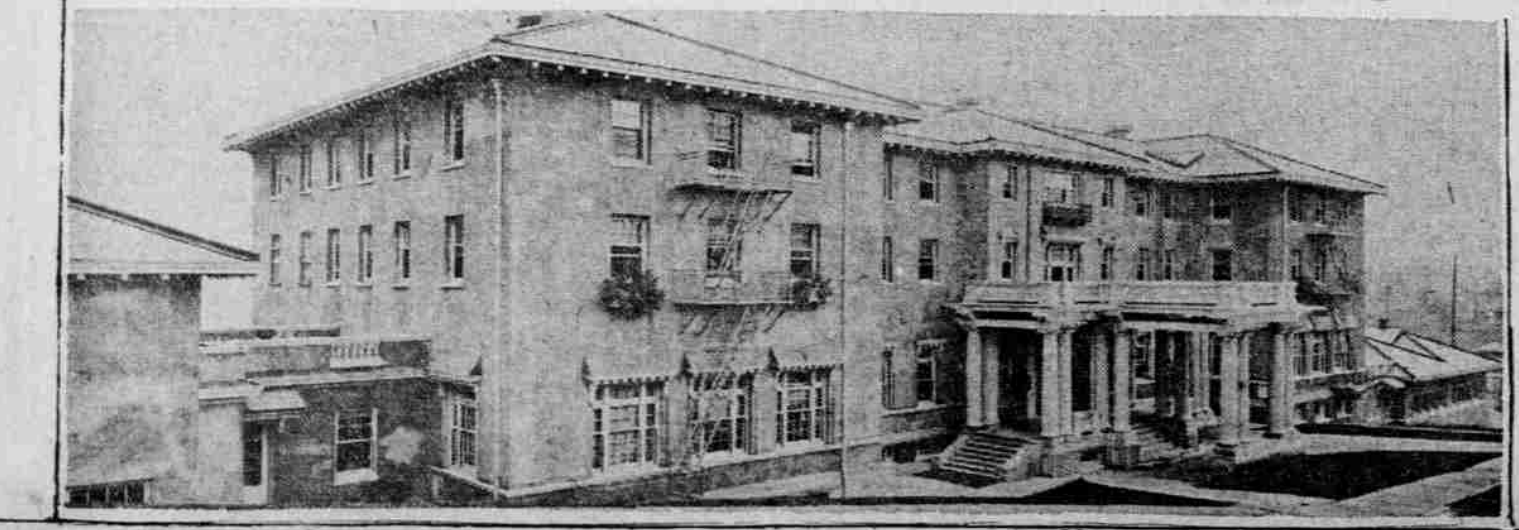
Concordia, 16th and Morrison



Woodmen of World, 12th and Eleventh



MILTON WERCHUK



Home of Multnomah Amateur Athletic Club, Completed in 1912



Scottish Rite Cathedral, Lownsdale and Morrison Streets