

PRESIDENT-ELECT AND VICE-PRESIDENT-ELECT CHOSEN YESTERDAY.

WILSON WINS; MAY HAVE 400 OF ELECTORS

Success of Democratic Ticket in Nation Is Early Assured.

PENNSYLVANIA IS IN DOUBT

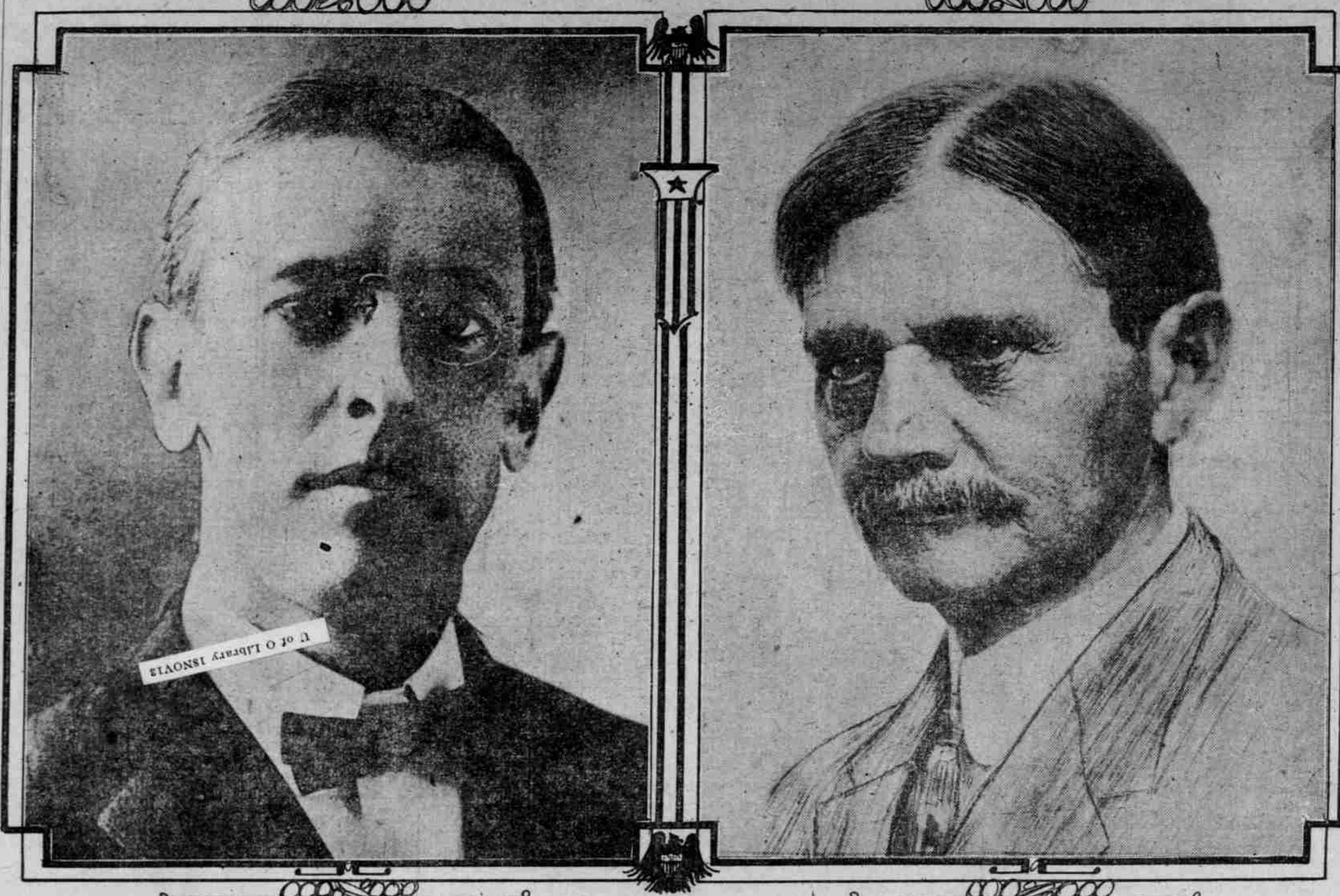
California, First Leaning to Roosevelt, May Be for Wilson on Full Count.

ROOSEVELT SECOND IN RACE

Illinois for Wilson in Face of Late Returns.

BAY STATE IS WILSON'S

Massachusetts Democratic on President First Time in Its History. Pennsylvania Close on Late Returns.



WOODROW WILSON, OF NEW JERSEY.

THOMAS RILEY MARSHALL, OF INDIANA.

MULTNOMAH SHOWS LEAD FOR WILSON

Bourne Probably Will Carry County, With Lane Second.

A. W. LAFFERTY REELECTED

Word Is Ahead of Fitzgerald and Davis Is Leading Tazwell and Young.

SUFFRAGE SEEMS INDOUSED

Graduated Single Tax Measure Is Defeated.

LIGHTNER SO FAR AHEAD

John B. Coffey Has Better Than 2-to-1 Lead Over Democratic Opponent—Result for Assessor Is in Doubt.

NEWARK, N. J., Nov. 5.—A Democrat will succeed Woodrow Wilson as Governor of New Jersey. Democrats elected four of six State Senators, thereby displacing a Republican majority of one with a similar Democratic majority, which will elect Wilson's successor.

NEW YORK, Nov. 5.—With the election of Woodrow Wilson to the Presidency and Thomas R. Marshall to the Vice-Presidency assured by the earlier returns tonight, the reports up to midnight gave indications that the electoral vote of the Democratic candidates would pass the 400 mark.

The size of the popular majority given the Democratic National ticket by the states outside of Illinois that might give electoral votes to either Taft or Roosevelt were matters of conjecture at midnight. It was certain, however, that Illinois would give an overwhelming majority to Roosevelt, while the race in Pennsylvania was so close as to bring all three candidates within range of success.

Wilson's Lead Seen Evidently

Early returns gave Woodrow Wilson and Governor Marshall the "solid South" and the states of Connecticut, Delaware, Kentucky, Maine, Maryland, Massachusetts, New York, West Virginia, Indiana and Missouri. As the night advanced and returns from the West began to come in, the earlier counts were confirmed and Montana, New Jersey and New Mexico were added to those that seemed certain for the Democratic candidates, while scattering returns from San Francisco and Los Angeles made it probable that California might join the Wilson-Marshall column.

Following is a resume in a nutshell of returns from various states: Alabama—Usual Democratic majorities. Arizona—Wilson has good lead; won (Continued on Page 6.)

TABLE OF STATES SHOWING ELECTORAL VOTES WON BY EACH CANDIDATE.

Table with columns for STATE, Electoral vote, Wilson, Roosevelt, In doubt.

WILSON HAS STATE

Electoral Vote of Oregon to Go to Democrat.

SINGLE TAX IS DEFEATED

Hawley Is Returned to Congress and Sinnott Has Been Chosen, According to Advertisers—Colonel Third in Race.

On the face of meager returns from upstate and comparison of figures with the nearest complete returns from Multnomah County, Oregon there is a doubtful state on President, with chances favorable that Woodrow Wilson, the Democratic candidate, will get the electoral vote.

The returns have a more definite aspect, however, on United States Senator and indicate a disastrous defeat of Jonathan Bourne, with Ben Selling the favorite.

It is probable though not certain that woman suffrage has carried and that single tax has been defeated by an overwhelming vote.

Hawley Is Returned. Congressman Hawley is returned to Congress in the First District and N. J. Sinnott is elected from the Second District. A. W. Lafferty is re-elected from the Third District.

In the Presidential contest there is reasonable ground for believing that Roosevelt will run third in Oregon, and, in fact, the up-state reports do not show with any degree of conclusiveness that Taft is out of the running for first place.

BENTON FAVORS BEN SELLING

Senatorial Candidate Takes 47 Votes Against Lane's 32.

CORVALLIS, Or., Nov. 5.—(Special.)—Partial returns from four precincts in Benton County give Chaffin 2, Debe, 2; Roosevelt, 28; Taft, 29; Wilson, 42; Bourne, 17; Clark, 3; Lane, 32; Selling, 47; Hawley, 42; Campbell, 18; Smith, 16; Stillman, 1.

Incomplete returns from scattering precincts of Benton County give Taft 192, Wilson 148, Roosevelt 86, Bourne 45, Clark 8, Lane 191, Selling 102, Paget 4, Campbell for Congress 28, Hawley 93, Smith 26, Kennedy 4, Olcott 72, Ryan 33, Lea 55, Mickel 67; woman suffrage, 22 yes, 21 no.

ROOSEVELT MARION FAVORITE

Taft Not Far Behind, However, and Selling Shows Lead.

SALEM, Or., Nov. 5.—(Special.)—Scattering and incomplete early re-

GREAT CAUSE HAS WON, SAYS WILSON

PRESIDENT-ELECT INVITES SUPPORT NOW FROM ALL.

Winner's First Utterance After Victory Is Sure Is for Alliance of All True Progressives.

PRINCETON, N. J., Nov. 5.—Responding to a telegram from the Democratic National chairman asserting that Governor Wilson unquestionably was elected, the Democratic candidate sent a dispatch to Mr. McCombs as follows: "I deeply appreciate your telegram and wish to extend to you and the members of the campaign committee my warm congratulations on the part you have played in the organization and conduct of a campaign fought out upon essential issues.

"A great cause has triumphed. Every Democrat, every true progressive, of whatever alliance, must now lend his full force and enthusiasm to the fulfillment of the people's hope, the establishment of the people's right, no that judgment and peace may go hand in hand."

This was Governor Wilson's first utterance of a public character following his acceptance of the reports that he had been elected.

WOTER AND WIFE HURT

Fast Train Hits Vehicle and Hurts Occupants Thirty Feet.

ELLENSBURG, Wash., Nov. 5.—(Special.)—Adam Stevens, 73 years old, a pioneer of Kittitas Valley, was struck by the eastbound Olympic train at Thorpe while going to a voting-place and fatally injured. His wife was also hurt, being hurled from a buggy 30 feet and suffered internal injuries.

The train was stopped and the aged couple taken to Ellensburg to a hospital, where it is said that Stevens' recovery is doubtful. He has a jagged hole in the center of his forehead as large as his fist and his skull is fractured in several places.

Stevens has been deaf for a number of years and it is thought that he did not hear the approaching flyer.

Stevens came to Kittitas in 1873, having come up the coast from San Francisco to Seattle. He was instrumental in the capture of Chief Moses and helped to build a stockade where Ellensburg now stands. He has many relatives here and is one of the best known and wealthiest ranchers in the valley. He was among the first to see the possibilities of Kittitas as a dairying center and now has a registered herd of Jersey cattle.

WOMAN 102 CASTS VOTE

Mrs. Lydia H. Sharpless for First Time Exercises Ballot Right.

WHITTIER, Cal., Nov. 5.—Mrs. Lydia Head Sharpless, 102 years old, cast her first vote today. Unaided, Mrs. Sharpless entered the voting booth and marked her ballot.

A lifelong Quakeress and an ardent prohibitionist, she announced she had voted the straight Roosevelt-Johnson ticket.

WASHINGTON IST. R.?

Bull Moose Claim State by 30,000 Majority.

LISTER VICTOR, ASSERTED

Democratic State Chairman Inclined to Concede Success of Roosevelt, but Declares Fight for Governor Won.

SEATTLE, Nov. 5.—One hundred and five precincts out of 1903 in the state give Roosevelt 7820; Wilson, 5198; Taft, 4424.

For Governor, 33 precincts give Hay (Rep.), 1236; Hodge (Prog.), 1234; Lister (Dem.), 1195.

SEATTLE, Wash., Nov. 5.—Thirty out of 231 precincts in the City of Seattle give Taft 1275, Wilson 1341, Roosevelt 3992.

SEATTLE, Wash., Nov. 5.—Eighteen out of the 1903 precincts in the state give Roosevelt 1547, Taft 941, Wilson 315.

The Democratic state chairman is inclined to concede the success of Roosevelt, but insists that Lister, Democratic candidate for governor, is elected with pluralities in King, Pierce and other large counties.

Chairman Snyder, of the Progressive state committee, claims the state for Roosevelt by 30,000 majority.

Republican state headquarters claim a majority of 10,000 for Taft.

For Governor, six precincts out of 1903 give Lister (Dem.), 262; Hodge (Prog.), 226; Hay (Rep.), 213.

REARDAN VOTES FOR SALOONS

Rockford Goes "Dry" After Bitter Fight by 114 to 101.

REARDAN, Wash., Nov. 5.—(Special.)—Reardan voted to license saloons today, 105 to 85. Two years ago the sale of liquor was licensed 92 to 56. Reardan has two saloons.

FARMINGTON, Wash., Nov. 5.—(Special.)—Saloons were licensed today by Farmington voters 132 to 42. There were 179 votes cast.

ROSAIA, Wash., Nov. 5.—(Special.)—Rosaia did not vote on the local option question today because of the alleged irregularity in the number of names on the petition presented.

ROCKFORD, Wash., Nov. 5.—(Special.)—Rockford was voted "dry" today after the most bitter fight in the history of the town, 114 to 101. There were 228 votes cast.

WILSON IS HONORED AT HIS BIRTHPLACE

STAUNTON, VA., GIVES DEMOCRAT 632, TAFT 287, T. R. 65.

Oyster Bay Is for Colonel by 300. President Gets Few—Bryan's Precinct for Winner.

By an overwhelming majority Woodrow Wilson carried his birthplace, Staunton, Va. Of his rivals Roosevelt was least in favor in the Virginia town. The vote was: Wilson 632; Taft 287 and Roosevelt 65.

Likewise the Colonel carried Oyster Bay, his present home town by a big majority, the voters favoring Taft with only a handful of votes. The returns showed Roosevelt 510, Wilson 218 and Taft 67.

In Roosevelt's own election district he received 231, Wilson 86 and Taft 28.

At Lincoln, Neb., Normal Precinct, Bryan's voting district, outside of Lincoln proper, Wilson polled 77, Roosevelt 47 and Taft 26. The same precinct in 1908 gave Bryan 111 and Taft 52.

BOOTH TARKINGTON TO WED

Author and Playwright Divorced in 1911 Wins Banker's Daughter.

DAYTON, O., Nov. 5.—(Special.)—It became known today that Booth Tarkington, the author and playwright, is to marry again and that his bride will be Mrs. Susanna K. Robinson, a wealthy widow of this city.

Mr. Tarkington was married once before, but his wife, who was Miss Laura Fletcher, obtained a divorce on November 12, 1911, on the charge of cruelty.

Mrs. Robinson is the widow of Temple Robinson and a daughter of the late Daniel Kiefer, a wealthy banker and manufacturer.

No day has been set for the wedding, but friends of the couple say that it will take place in a few days.

CANNON BELIEVED LOST

Meager Returns Show Defeat of ex-Speaker of House.

DANVILLE, Ill., Nov. 5.—Meager returns indicate the defeat of ex-Speaker Cannon by Frank T. O'Hair by about 1200 plurality in the Eighteenth district.

Six precincts in Vermillion County, normally heavily Republican, gave Cannon 417 and O'Hair 374, indicating that the latter is holding his own in Cannon's home county, where he expected to get votes to offset the southern counties, conceded to O'Hair, who claims Cumberland, Clark, Edgar and Iroquois counties will give him a plurality of 2000, and conceding Vermillion County and Kankakee County to Cannon with a plurality of 890.

CALIFORNIA IN DOUBT

Colonel Leads in South but Loses in Interior.

MARGIN WILL BE SMALL

Wilson Has Plurality of 6000 in San Francisco and Carries Many Counties—Roosevelt Leads in Los Angeles by 20,000.

SAN FRANCISCO, Nov. 5.—Returns from the largest three California cities and from scattered precincts from every section of interior California indicate that the winner's plurality in today's Presidential contest will shade down to a very narrow margin when the complete count is made.

Roosevelt apparently has a plurality in excess of 20,000 in Los Angeles County and has carried Alameda County by a fair margin.

Wilson carries San Francisco. Wilson on the basis of early returns will have a plurality of 6000 in San Francisco County.

Returns from a large majority of the interior counties show Wilson pluralities and these, added to his lead in San Francisco, threaten to overcome the Roosevelt pluralities in the Los Angeles and Alameda strongholds.

The situation at 10 o'clock tonight was one in which the indicated margin for either candidate was so small that it would be idle to forecast the final result.

Democrats Claim State. J. O. Davis, chairman of the Democratic State Central Committee at 9 o'clock telegraphed the Democratic National Committee that Wilson had carried California by a majority of about 20,000 over Roosevelt.

Julius Kahn, Republican incumbent, was re-elected in the Fourth Congressional District. In the Fifth Congressional District John I. Nolan, Progressive, was elected.

T. R. LEADS IN UNION COUNTY

Lane Appears to Have Edge on Selling in Senatorial Race.

LA GRANDE, Or., Nov. 5.—(Special.)—Incomplete returns from 11 precincts in Union County give the following totals: Taft 66, Wilson 109, Roosevelt 130.

For Senator, Bourne 52, Clark 44, Paget 13, Selling 96, Lane 107. For Congress, Graham 31, Sinnott 76. For Secretary of State, Kennedy 28, Olcott 36, Ryan 34. For Judge of Supreme Court, Bakin 77, Slater 27. Other returns are: Lea 7, Mickel 12, Aitchison 44, Anderson 11, Mahaffey 50. Suffrage for 501, against 7. Public utilities 16.

1649-Carat Diamond Found.

JOHANNESBURG, Nov. 5.—A diamond weighing 1649 carats has been discovered in the Premier mine. The famous Cahinn diamond, which was found in the same mine in 1905, weighed 3624 carats, but was cut into 11 separate stones.

Wilson has a slight lead in Multnomah County and if the ratio continues he will carry the county. Roosevelt is running a close second with President Taft in third place.

For United States Senator, Bourne, the "popular government" candidate, is leading both Lane and Selling. Bourne probably will carry the county, but it is impossible to estimate his probable plurality because of the meagerness of the returns. It may reach 3000. Lane is holding second place and with complete returns may reduce Bourne's lead. Selling is in third place.

Munly Runs Second. Representative Lafferty has been re-elected and his aggregate vote may equal the combined strength of his two opponents, Munly and McCusker. Munly is running second with McCusker in third place.

The contest for Sheriff is decidedly close with Word slightly in the lead over Fitzgerald at midnight. The meager returns at that hour consisted chiefly of West Side precincts, including some North End precincts, which went strongly for the Republican nominee. Word's lead undoubtedly will be substantially increased by the returns from the residence districts and the county precincts. Word very probably has been elected.

Davis Leading Tazwell. George N. Davis, the Progressive nominee for Circuit Judge, Department No. 4, is leading Tazwell, Republican, and Young, Democrat. Although his lead is small, Davis apparently has been elected. Tazwell is running second, with Young a close third.

Woman suffrage probably has carried the county, although the affirmative majority is small. The so-called graduated single tax measure has been overwhelmingly defeated. The adverse vote against it may reach two to one.

County Commissioner Lightner has a lead over Cronan, Dem., and Pease, Prog., and appears to have been re-elected, although later returns show that Pease is overcoming Lightner's lead. Cronan is a poor third.

Coffey Far in Lead. John B. Coffey has better than a two-to-one lead over his Democratic opponent, J. B. Carr, for County Clerk.

The result on County Assessor is in doubt. Reed is being closely pressed by Wagnon, his Democratic-single-tax opponent. John M. Lewis has been re-elected by the usual "Lewis" majority over Versteeg, his Democratic rival.

In an interesting three-cornered fight for School Superintendent, A. P. Armstrong (Rep) has a two-to-one lead over either of his two opponents, Anders, Progressive, and Draper, Democrat.

Dr. Samuel C. Slocum, Republican, according to early returns, has been elected County Coroner. He has a two-to-one lead over his closest opponent, Biersdorf, Democrat.

Between 80 and 85 per cent of the registered vote of 52,204 was cast in yesterday's election. Voting was uniformly heavy in both city and suburban districts, favorable weather bringing out the voters in all districts.

At midnight the vote so far counted in Multnomah County was as follows:

Table with columns for Candidate, Votes, and Percentage.

Wilson's lead ... 98

United States Senator. Bourne, Jonathan, Jr. (Ind) ... 696

Clark, A. E. (Prog.) ... 184

Lane, Harry (Dem.) ... 620

Paget, B. Lee (Prog.) ... 39

40 Paget, B. Lee (Prog.) ... 39

Wilson's lead ... 98

STAKE.

37 Bourne, Jonathan, Jr. (Ind) ... 696

38 Clark, A. E. (Prog.) ... 184

39 Lane, Harry (Dem.) ... 620

40 Paget, B. Lee (Prog.) ... 39

(Continued on Page 12.)