

5 KILLED AS CARS FALL FROM BRIDGE

Milwaukee Engine Jumps Track on Trestle Near Keechelus, Wash.

SEATTLE WOMAN VICTIM

Two Engineers and Two Firemen Are Others Killed—Passengers Start for Seattle on Train of Northern Pacific.

SEATTLE, Aug. 12.—(Special)—Five persons were killed and several injured late today when the westbound Olympian train, of the Chicago, Milwaukee & Puget Sound Railroad, broke through a bridge half a mile west of Keechelus, 57 miles east of Seattle.

The train, drawn by two locomotives, was passing the summit of the Cascade Mountains when the forward engine was derailed on the forward side of the bridge and fell over a small stream. The pounding of the wheels over the ties broke down the bridge and both engines, the mail car and the baggage car fell into the creek. One coach was partly derailed. The rest of the train remained on the track.

A. D. Shibley, baggage master; C. M. Thomas, express messenger, and Thomas Marshall, brakeman, were injured. All will recover. Engineer Noble lived in Seattle. Engineer Towne's family are in Salem, Or.

The train, which left Chicago Friday night and was due in Seattle tonight, was running on time at Keechelus at 5 o'clock, a minute before the accident happened.

Wrecking trains were sent from both ends of the division to repair the bridge and open the line to traffic, which is being handled over the Northern Pacific tracks across the mountains.

The passengers are being brought to Seattle on a Northern Pacific train.

WOOL RATE CASES ARE SET

Change in Minimum Load Sought by Shippers.

SALEM, Or., Aug. 12.—(Special)—An order for a rehearing in the cases of the Railroad Commission of Oregon vs. the O. W. R. & N. and the National Woolgrowers' Association vs. the Oregon Short Line has been issued by the Interstate Commerce Commission, the rehearing to be held at the Federal building in Denver, September 16. A copy of the order from the Interstate Commerce Commission was received by the State Railroad Commission here today.

It is claimed that the minimum prescribed (referring to the former order) cannot be loaded in certain sections, and that the minimum for a 26-foot car ought not to exceed 20,000 pounds, says the order for rehearing.

Certain scoring mills contend that the rates established on wool in the grease as compared with the rates on scoured wool, which are now in effect, will put them out of business.

Carriers insist that the fourth-class rate ought not to be applied in a westerly direction, since the only effect of this application is to force down the water competition rates, which are already lower than the Commission has found reasonable from intermediate points.

COMMUNITY PLAN URGED

Effort Will Be Made to Spread Gospel at State Fair.

SALEM, Or., Aug. 12.—(Special)—"Country Life" day at the State Fair is one of the features that is being planned by the Country Life Commission of Oregon, and it is hoped to start a state-wide movement toward bringing about in all rural communities the same conditions that exist at East Gaston.

W. K. Newell, of Gaston, will be asked to speak on the East Gaston plan, which includes a community system of raising crops and livestock and a community system of marketing and sale. Superintendent Alderman, chairman of the Country Life Commission, says that he considers the plan one of the best known for bringing rural development among adults to the highest stage and he is anxious to see it carried out in all the communities of the state.

It is probable that E. E. Barber, of Roseburg, will also speak Country Life day, and it is hoped that Frank G. O'Dell, "the wizard of Lincoln, Neb., who will be at the State Fair, will be one of the speakers.

ALASKA COAL LOOKED UP

Bering River Beds to Be Surveyed for Warships' Fuel Supply.

SEATTLE, Aug. 12.—Dr. J. A. Holmes, director of the United States Bureau of Mines, is preparing to make a survey of the Bering River coal field, Alaska, with a view to the use of its coal by United States war vessels on the Pacific Coast.

Dr. Holmes, who is still in Washington, will leave Kaitiia with horse pack-trains, supplies and 40 men beside his scientific party, and the expedition will set out as soon as the director can arrive in Alaska. For snow and rain begin to fall in the Bering River country in September, though the sun is shining now.

A study of the availability of the Matanuska field, which is tributary to Seward, is being made by officers from the cruiser Maryland. The Matanuska field at present is more easily reached than the Bering River field, though farther from tidewater. Title to all the land in both fields vests in the United States Government, no patent having been issued to any claimant.

KLAMATH WHEAT BUMPER

Grain 20 Per Cent Better Than Last Year Is Reported.

KLAMATH FALLS, Or., Aug. 12.—(Special)—When in Klamath County promises to yield about 20 bushels per acre, which is fully 20 per cent better than last year. The price now offered is \$1.30 per 100 pounds, against \$1.10 one year ago. Oats are estimated at 40 bushels per acre, about 30 per cent better than last season, and quoted at

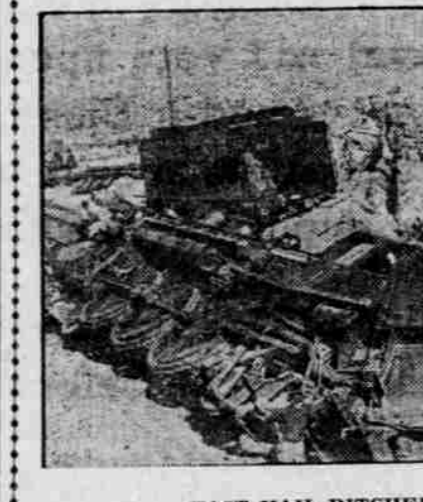
\$1.40 per 100 pounds; price same one year ago. Barley is estimated at 60 bushels per acre; average last year 50 bushels. Price offered \$1 per 100 pounds, against \$1.25 last year. Alfalfa is estimated at four tons per acre, same as last season. Price in stack or field, \$7 to \$8 per ton; same price one year ago. Potatoes average 40 bushels per acre; last year about 250 bushels. Price now offered 75c per 100 pounds; one year ago \$1 to \$1.10. Lentage in wheat 30 per cent more than one year ago; in oats, barley and alfalfa about the same; in potatoes nearly double the acreage this season as compared with last.

DALLAS WILL ADVERTISE

Confusion With The Dalles Resented by Polk County City.

DALLAS, Or., Aug. 12.—(Special)—Though Dallas ships more tonnage each year than any other city in the state outside of Portland, owing to its lumber and fruit industries, and though it is recognized as the prime center of the state and the molar center of the world, still in Oregon there are many persons who do not know where Dallas is, and who confuse it with The Dalles. To overcome this ignorance the Dallas Commercial Club has adopted a slogan which it intends to advertise extensively: "Dallas of Polk. Prune center."

QUARTZ WRECK PROVES MYSTERY, THOUGH TRACK IS BELIEVED "SPRINGY."



FAST MAIL DITCHED AT COST OF \$1200.

HAKER, Or., Aug. 12.—(Special)—How the fast mail on its way to Portland jumped the track near Quartz Friday night is hard to solve. It is believed that the track is "springy" at that point and the engine of the first engine thus jumped the track, taking with it the second engine, a baggage and two mail cars. No one was injured and the damage is only \$1200. The engine and baggage clerks had to climb out. The train engine did not leave the track. The wreck tied up the road for nearly 24 hours.

ter. It is in Portland, particularly, that the mistake as to the location of this city is made. Owing to the rapid train service between Portland and The Dalles, and the Sunday excursions up the river, which are extensively patronized, the people of Portland are well acquainted with the location of the city on the Columbia.

Another thing that has tended to keep Dallas from the attention of the traveling public was the fact that for nearly 30 years no train for Dallas ran out of the Union Depot. It has been within the past few months that Dallas has gained Union Depot terminal facilities. The benefit of this is being felt already.

SEWAGE SUIT IS STARTED

Test Case at Salem to Determine Powers of Board of Health.

SALEM, Or., Aug. 12.—(Special)—To determine what power the State Board of Health has to restrain incorporated cities and towns from dumping their toilet sewage into streams which are used for drinking and domestic purposes, a dumping grounds for the waste of communities. The present suit will be carried to the highest court and the authority of the State Board of Health is in the event that the State Board of Health is probable there will be a general fight directed at various other cities and towns throughout the state.

BOLO CLUB MAKES CHOICE

Tacoma Spanish War Veterans to Fight for Governor Hay.

TACOMA, Aug. 12.—One hundred and eighty-five members of the Washington State Bolo Club, all honorably discharged soldiers of the Spanish-American war and the Philippine insurrection, met behind closed doors here today. President Edward Clifford issued a statement at the close of the meeting announcing that the Bolo Club had endorsed the following candidates for state offices:

For Governor, Marion E. Hay, incumbent; for Lieutenant-Governor, Lewis F. Hart, of Tacoma; for Congressman-at-large, Harry A. Rosenbaum, Spokane, and John E. Ballaine, Seattle; Treasurer, Ed Meath, of Tacoma; Auditor, C. W. Clausen, incumbent; Commissioner of Public Lands, Mrs. Maude H. Tamblin, of Olympia; Superintendent of Public Instruction, A. S. Burrows, Seattle; Attorney-General, W. V. Tanner, incumbent.

Strong endorsement was also given R. W. Cozier, of Tacoma, for United States District Attorney.

CAPITAL STOCK IS DOUBLED.

WEST STATION, Or., Aug. 12.—(Special)—At a general meeting of the Willamette Valley Irrigation Land Company, it was decided to increase the capital stock from \$100,000 to \$200,000 as the first unit of the project has in the short space of 18 months proved such a success, that the company decided to increase its development work more rapidly.

Socialists Invade New Territory.

CENTRALIA, Wash., Aug. 12.—(Special)—The Socialist ticket for the Fall election in Lewis County was completed yesterday, when Reinhold Hilbert, of Centralia, filed for County Engineer. This is the first time that the Socialist party has figured in a Lewis County election.

Stampeting to Knights.

Men and women will find the best shoe opportunity ever offered in Portland at Knight's stamper sale of Oxford and shoes. See windows. Such makes as Stacy Adams, Scovills, Walk-Over, Murray and Hallahan's at greatly reduced prices. Morrison, at Seventh.

SUGAR KING IN LIGHT

Letters Tend to Show Havemeyer Boss in Colorado.

MOREY ADVISES MAGNATE

Head of Great Western Writes to Effect That to Get Interests "In Shape" One Company Is Thing Necessary.

DENVER, Aug. 12.—Letters purporting to show that the best and sugar industry in Colorado was dictated by H. O. Havemeyer, head of the American Sugar & Refining Company, were introduced today in the Government's inquiry before Special Commissioner W. B. Bryce to dissolve the so-called "sugar trust" in Colorado. The letters were not read today, but

Stationery Specials With Removal Sale

Prices for Today and Tomorrow

25c Baby's Comfort Talcum 10c
25c Dry Rouge 10c
25c Basket of odds and ends of Fine Soap, 10c
25c Nail Polish 10c
25c Soap Boxes 10c
25c Toilet Water 10c

Special Removal Sale Reductions in Our Perfumery Department for Today and Tomorrow.

25c Baby's Comfort Talcum 10c
25c Dry Rouge 10c
25c Basket of odds and ends of Fine Soap, 10c
25c Nail Polish 10c
25c Soap Boxes 10c
25c Toilet Water 10c

Stationery Specials With Removal Sale

Prices for Today and Tomorrow

Automobile Cups, 6-in., our \$1.25, at 69c
Tablets, reg. 25c, line two-fold, special 10c
Ruled Tablets, reg. 10c, special 5c
Autocrat Linen, blue and gray, all sizes, reg. 35c, special 14c
Rubbly Lawn, 24 sheets and envelopes to match, reg. 50c, special 29c
Spirira Linen, reg. 25c, special 19c
Congress Playing Cards, reg. 50c, special 42c
"Wood-Lark" Playing Cards, reg. 35c 25c
Does your pen leak? Let our Pen Expert see what can be done with it. We clean and repair while you wait. Try a Waterman's Ideal or Conklin's Self Filler Pen for a week. If it does not please you we will refund your money \$2.50 to \$28

Stationery Specials With Removal Sale

Prices for Today and Tomorrow

removing a derrick and planting mill on the right of way adjoining the proposed park site. This terminated negotiations and the new park commission must begin all over again with the work of providing Gold Hill with a public beauty spot.

DENMAN IS "BLACKBALLED"

Progressive Republican League Refuses Membership—\$1 Fee Back.

SPOKANE, Wash., Aug. 12.—(Special)—State Representative George Denman, for two sessions one of the progressive leaders in the lower house of the State Legislature, has been "blackballed" by the executive committee of the Progressive Republican League. The executive committee has voted to refuse Denman membership in the league and to return a check for \$1 membership fee.

At the time the charge was made that Denman, two years ago, after promising to pay an assessment against him by the Republican county central committee, failed to pay. Other men who had been elected to office were called upon to make good the amount.

It is also charged that four years ago, when David T. Ham was chairman of the county central committee, a similar incident occurred.

Ellensburg Prospects Good.

ELLENSBURG, Wash., Aug. 12.—Although practically all members of Ellensburg's winning football team of last season were graduated this Spring, the High School boys have been lining up

Today and Tomorrow at Woodard-Clarke's Removal Sale

Where some of the best bargains will be introduced to Portland shoppers. It will be to your advantage to make their acquaintance.

In the Patent Medicine Department Take Advantage of These Out Rate Removal Sale Prices

Himrod's Asthma Powder, reg. \$1, at 79c
Thompson's Eye Water, reg. 25c, special 18c
Shac Headache Wafers, reg. 25c, special 17c
Mentholatum, reg. 50c, special 39c
Pond's Extract, reg. \$1, special 75c
Tiz Foot Tablets, reg. 25c, special 18c
Pierce's Pellets, reg. 25c, special 15c
Bucklen's Arnica Salve, reg. 25c, special 19c
Lister's Formaldehyde Fumigators, reg. 50c, special 40c
Eskey's Baby Food, reg. 50c, special 35c
Tanglefoot Fly Paper, box of 25 double sheets special 35c
Fat Foe, for obesity, reg. \$1, special 85c
Atwood's Bitters, reg. 25c, special 19c
Bacon's Celery King Tea, reg. 50c, now 39c
Herpicide, reg. \$1, special 65c
Potter's Walnut Hair Stain, reg. \$1, at 50c
Piso Cough Remedy, reg. 25c, special 19c
Hamlin's Wizard Oil, reg. 50c, special 39c
Pertussin, for whooping cough, reg. \$1 89c
S. S. S. Swift's Specific, large size, reg. \$1.75, special \$1.19
Pierce's Favorite Prescription, reg. \$1, at 69c
Chamberlain's Diarrhoea Remedy, reg. 25c, special 19c
Bromo Seltzer, reg. 50c, special 39c
Lactopeptine Tablets, reg. 50c, special 39c
Glycothymoline, reg. 25c, special 19c
Diapsin, reg. 50c, special 39c
Fruitala, reg. \$1, special 85c
Carter's Liver Pills, reg. 25c, special 19c
Kendall's Sprain Remedy, reg. \$1, at 75c
Caldwell's Syrup Pepsin, reg. 50c, at 39c

Special Removal Sale Reductions in Our Perfumery Department for Today and Tomorrow.

25c Baby's Comfort Talcum 10c
25c Dry Rouge 10c
25c Basket of odds and ends of Fine Soap, 10c
25c Nail Polish 10c
25c Soap Boxes 10c
25c Toilet Water 10c

Stationery Specials With Removal Sale

Prices for Today and Tomorrow

Automobile Cups, 6-in., our \$1.25, at 69c
Tablets, reg. 25c, line two-fold, special 10c
Ruled Tablets, reg. 10c, special 5c
Autocrat Linen, blue and gray, all sizes, reg. 35c, special 14c
Rubbly Lawn, 24 sheets and envelopes to match, reg. 50c, special 29c
Spirira Linen, reg. 25c, special 19c
Congress Playing Cards, reg. 50c, special 42c
"Wood-Lark" Playing Cards, reg. 35c 25c
Does your pen leak? Let our Pen Expert see what can be done with it. We clean and repair while you wait. Try a Waterman's Ideal or Conklin's Self Filler Pen for a week. If it does not please you we will refund your money \$2.50 to \$28

Stationery Specials With Removal Sale

Prices for Today and Tomorrow

removing a derrick and planting mill on the right of way adjoining the proposed park site. This terminated negotiations and the new park commission must begin all over again with the work of providing Gold Hill with a public beauty spot.

DENMAN IS "BLACKBALLED"

Progressive Republican League Refuses Membership—\$1 Fee Back.

SPOKANE, Wash., Aug. 12.—(Special)—State Representative George Denman, for two sessions one of the progressive leaders in the lower house of the State Legislature, has been "blackballed" by the executive committee of the Progressive Republican League. The executive committee has voted to refuse Denman membership in the league and to return a check for \$1 membership fee.

At the time the charge was made that Denman, two years ago, after promising to pay an assessment against him by the Republican county central committee, failed to pay. Other men who had been elected to office were called upon to make good the amount.

It is also charged that four years ago, when David T. Ham was chairman of the county central committee, a similar incident occurred.

Ellensburg Prospects Good.

ELLENSBURG, Wash., Aug. 12.—Although practically all members of Ellensburg's winning football team of last season were graduated this Spring, the High School boys have been lining up

the situation for this Fall and believe they will have a good team. Last Fall Ellensburg was second in the state championship race, Wenatchee being first. The matter of a coach for this year has not yet been settled. Practice, however, will start September 3, and the first game will be with Roslyn on September 19. Sunnyside will follow and the third game of the season will be

with North Yakima, played here. A number of boys will try out for the team next month.

Centralia Lawyer Only Democrat.

CENTRALIA, Wash., Aug. 12.—(Special)—Charles K. Walsh, a Centralia attorney, was the only Democrat to file for the office of Lewis County

Prosecutor. C. D. Cunningham and W. H. Cameron, of Centralia, and O. J. Albers and W. E. Bishop, of Chehalis, were the Republicans who filed for the office. The filing closed Saturday with a total of 14 candidates in the field for various county offices. Only two women filed, Mrs. Bertha Gage for County Clerk and Mrs. Jane McCutcheon for School Superintendent.

See this unique natural phenomenon—2000 feet in depth, 6250 feet above the sea, rimmed with rocky precipices, from 1000 to 2000 feet above the water's surface, many of them perpetually snow-capped. Attractions include Wizard Island, the Phantom Ship, Garfield Peak, Annie Creek Canyon. Good accommodations; excellent camping sites. Reasonable rates.

SPECIAL ROUND-TRIP FAIR'S FROM ALL POINTS From Portland to Crater Lake \$36.10

Correspondingly Low Fares From Other Points. Train service from Klamath Falls to Chiloquin three times weekly—Mondays, Wednesdays and Fridays. Connection from Chiloquin direct to Crater Lake by auto.

For further information call on nearest agent, or address JOHN M. SCOTT, General Passenger Agent, Portland, Or.

Art Goods, Including Pictures, Cut Glass, Pottery, Etc., Going at Special Removal Sale Reductions—Fourth Floor

All Oil Paintings, reg. \$15, all framed \$3.50
All Oil Paintings, values to \$40, at \$17.50
1000 Framed Pictures worth from \$1 to \$1.50 special at 25c
1000 Framed Pictures worth from \$2 to \$5 special at 98c
100 Framed Pictures worth from \$3 to \$7 special at \$1.37
All Brass Objects at ONE-HALF OFF
Cut Glass at ONE-THIRD OFF
1000 pieces Imported Pottery at less than 1/2 1000 pieces, worth up to \$1, at 15c
100 pieces worth up to \$1.50 at 49c
100 pieces worth up to \$2 and over at 98c
100 pieces worth from \$3.50 to \$6 at \$2.49
500 pieces, values to \$25, at ONE-HALF

Our Drug Department Offers the Following Specials for Today and Tomorrow

"Wood-Lark Weed Destroyer—For destroying and exterminating all vegetation on roads, streets, etc. Bottle, 35c and 60c; gallon, \$2
For-Mol Tooth Powder—A fine tooth powder. Try it. Regular 25c, special, can. 9c
Wood-Lark Assorted Corks, package, 25c
Witch Hazel—The pure concentrated extract—Dickinson's choicest brand. Direct from the barrel. Bottle, 10c, 15c, 25c, 40c; gal. \$1.40
"Wood-Lark" Hydrogen Peroxide—Especially prepared for our customers: 10c, 15c, 25c
"Wood-Lark" Furniture Polish—For furniture, pianos and all polish woodwork, bicycles, automobiles and carriages. Bottle, 25c
Leeches—We have always in stock a fresh lot of imported Leeches. 25c

Men—Look Here

Big Reductions in Shaving Accessories
All Triplicate and Shaving Mirrors 1/2 off
All Razor Straps at 1/2
All Razors, reg. \$1 to \$3.50, at 1/2 Price
Derby Silver Shaving Sets, 1/2 PRICE
Derby Silver Shaving Mugs, to \$4.50, \$1.33
THREE SPECIALS FOR THE HOUSEWIFE
Chaffing Dishes, values to \$10.50, at \$4.98
Coffee Percolators at ONE-THIRD OFF
Sugar and Creamer Sets at HALF OFF

Rubber Goods

Big Reductions Here

Turkish Towels, reg. 50c, special 33c
Bath Sprays, reg. \$1.50, special \$1.19
Bath Sprays, reg. 75c, special 63c
Bisque Dolls, reg. 50c and 65c, special 39c
Bisque Dolls, reg. 25c, special 19c
3-qt. Maroon Waterbottle, reg. \$1.75, \$1.19
Size 3 Red Ft. Syringe, reg. \$1.50, \$9c
Size 2 Red Ft. Syringe, reg. \$1, special 74c
Justrite Nursing Bottles to fit the Hygia nipples, each 5c
Bathing Caps, 25c at 19c; 65c-75c, 49c

Note These Two Extra Specials in the Jewelry Dept. for Today and Tomorrow

Opera Glasses of best Paris makes at One-Fourth Off Regular Price
Hat Pins, values 25c to \$2, at 1/2 Price

Opera Glasses of best Paris makes at One-Fourth Off Regular Price
Hat Pins, values 25c to \$2, at 1/2 Price

Opera Glasses of best Paris makes at One-Fourth Off Regular Price
Hat Pins, values 25c to \$2, at 1/2 Price

Opera Glasses of best Paris makes at One-Fourth Off Regular Price
Hat Pins, values 25c to \$2, at 1/2 Price

Opera Glasses of best Paris makes at One-Fourth Off Regular Price
Hat Pins, values 25c to \$2, at 1/2 Price

Opera Glasses of best Paris makes at One-Fourth Off Regular Price
Hat Pins, values 25c to \$2, at 1/2 Price

Opera Glasses of best Paris makes at One-Fourth Off Regular Price
Hat Pins, values 25c to \$2, at 1/2 Price

Opera Glasses of best Paris makes at One-Fourth Off Regular Price
Hat Pins, values 25c to \$2, at 1/2 Price

Opera Glasses of best Paris makes at One-Fourth Off Regular Price
Hat Pins, values 25c to \$2, at 1/2 Price

Opera Glasses of best Paris makes at One-Fourth Off Regular Price
Hat Pins, values 25c to \$2, at 1/2 Price

Opera Glasses of best Paris makes at One-Fourth Off Regular Price
Hat Pins, values 25c to \$2, at 1/2 Price

Opera Glasses of best Paris makes at One-Fourth Off Regular Price
Hat Pins, values 25c to \$2, at 1/2 Price

Opera Glasses of best Paris makes at One-Fourth Off Regular Price
Hat Pins, values 25c to \$2, at 1/2 Price

Opera Glasses of best Paris makes at One-Fourth Off Regular Price
Hat Pins, values 25c to \$2, at 1/2 Price

Opera Glasses of best Paris makes at One-Fourth Off Regular Price
Hat Pins, values 25c to \$2, at 1/2 Price

Opera Glasses of best Paris makes at One-Fourth Off Regular Price
Hat Pins, values 25c to \$2, at 1/2 Price

The New "Woodlark" Building



Alder at West Park

Removal Sale Prices in All Departments

Removal Sale Prices on Leather Novelties and Traveling Goods.

New Flasks with safety top gold lined cup, reg. \$3 to \$5 ONE-FOURTH OFF
New Safety Pockets, silk covered chamois lined, reg. 85c, special 46c
Odds and Ends Money Bags—Patent Leather Music Rolls—Crash Belts—while they last 9c
New shipment of "Cross" Traveling Bags in pigskin, seal, walrus and calf, new and up-to-date shapes, English plain linings, \$15-\$35.50
Traveling Cases fitted complete, leather lined, from \$5 to \$35 ONE-FOURTH OFF

The Largest Display of Parisian Ivory From Which to Select Your Set—We Have a Saving of One-Fourth For You

Last chance—Parisian Ivory Mirrors now only \$1.39, \$1.79, \$2.19, \$2.69
All Parisian Ivory Brushes, over 30 styles, at ONE-FOURTH OFF
Large Handle Manicure Pieces, file, hook and cuticle knife, at 49c
Removable Chamois Buffers 75c and 98c
Bonnet Brushes only 59c
Powder Boxes, Pin Cushion and Jewel 98c
Whisk Brooms, two styles \$1.19
Free with every purchase of Parisian Ivory \$1 and over, on Wednesday only, a 25c Ivory Cuticle Stick.

Do you like real bargains? Our Bristle Section awaits your inspection. \$2 Ebony and Rosewood Hair Brushes, all sizes and shapes, only \$1.29
A real stiff Bristle Brush at 98c
Our best Tooth Brushes only 25c
Odd lot of Tooth Brushes at only 10c
Exceptional values in Hair Brushes 33c
Large Women's Combs at only 59c
25c and 35c Women's Combs at only 19c
25c and 35c nice assortment Fine Combs 19c
Nail and Hand Brushes at 10c, 25c, 37c
Extra fine Clothes Brushes in ebony and rosewood \$1.29
Clothes Brushes assortment at 33c

Note These Two Extra Specials in the Jewelry Dept. for Today and Tomorrow

Opera Glasses of best Paris makes at One-Fourth Off Regular Price
Hat Pins, values 25c to \$2, at 1/2 Price

Opera Glasses of best Paris makes at One-Fourth Off Regular Price
Hat Pins, values 25c to \$2, at 1/2 Price

Opera Glasses of best Paris makes at One-Fourth Off Regular Price
Hat Pins, values 25c to \$2, at 1/2 Price

Opera Glasses of best Paris makes at One-Fourth Off Regular Price
Hat Pins, values 25c to \$2, at 1/2 Price

Opera Glasses of best Paris makes at One-Fourth Off Regular Price
Hat Pins, values 25c to \$2, at 1/2 Price

Opera Glasses of best Paris makes at One-Fourth Off Regular Price
Hat Pins, values 25c to \$2, at 1/2 Price

Opera Glasses of best Paris makes at One-Fourth Off Regular Price
Hat Pins, values 25c to \$2, at 1/2 Price

Opera Glasses of best Paris makes at One-Fourth Off Regular Price
Hat Pins, values 25c to \$2, at 1/2 Price

Opera Glasses of best Paris makes at One-Fourth Off Regular Price
Hat Pins, values 25c to \$2, at 1/2 Price