

COMMISSIONERS OF LANDS OPPOSED

American Can Company Makes Plea Before Commission of Public Docks.

MEMBERS WORK IN HEAT

A. B. Winfree, Counsel for Concern, Speaks on Proposed West Side Dock Site, Where Company's Plant Now Stands.

There was an old fashioned shirt waist party held yesterday afternoon on the fifth floor of the Worcester building...

Weather is "Blessed." Ben Sellings' feelings with reference to warm weather were not aired because he was out of the city...

A. B. Winfree, as counsel for the American Can company whose plant is on the proposed West Side dock site...

Bond Sale Authorized. An ordinance was read and passed authorizing the sale of \$1,500,000 of bonds...

It is suggested that if the low stage of water in the Willamette was not taken advantage of, wooden piling could not be used for the foundation...

Early Estimate Wanted. It was voted that an ordinance be drawn for the removal of improvements owned by the State...

Changes Are Made. Some changes are being made, one in the size of elevators for the East Side warehouse...

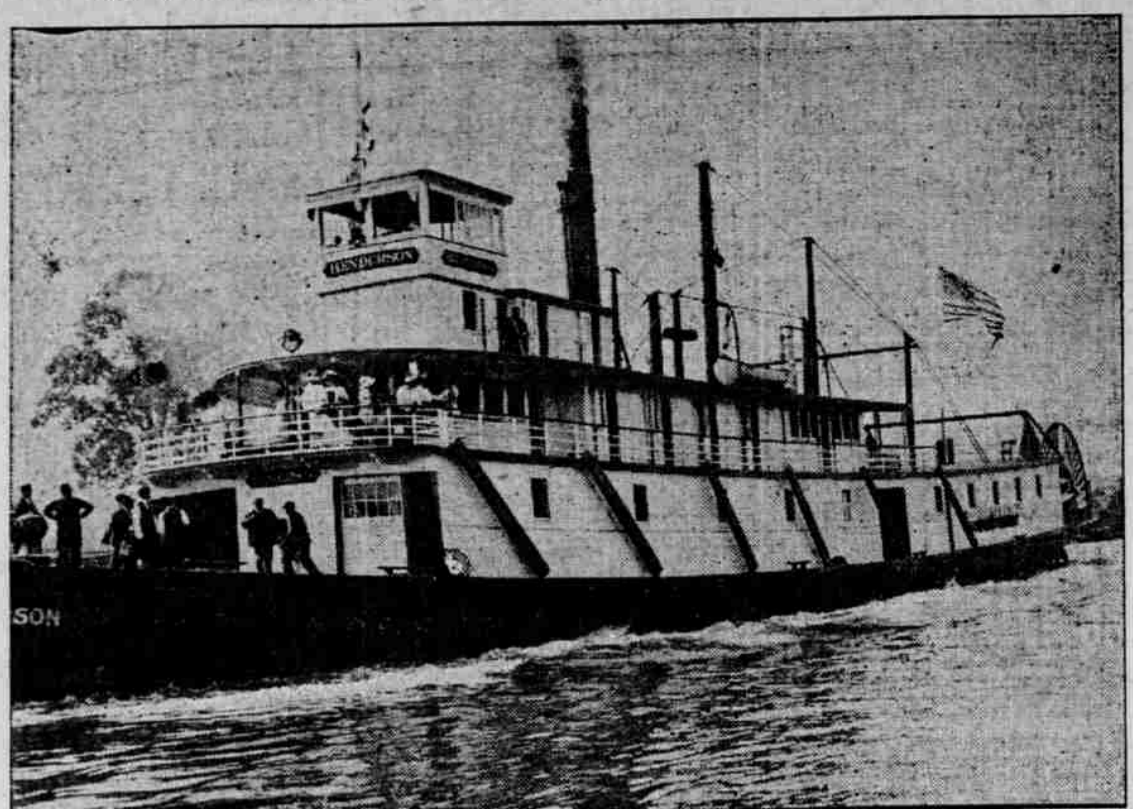
Channel Improvements Halt Until Water Recedes. Water in the Columbia River may not fall sufficiently to permit dredging to be resumed...

COLUMBIA'S STAGE IS HIGH Channel Improvements Halt Until Water Recedes.

Water in the Columbia River may not fall sufficiently to permit dredging to be resumed on the upper river for a month or six weeks...

Travelers who have reached the river after passing through the Clearwater country, say that there is an abundance of snow remaining in the hills...

NEW STEAMER TAKES WATER AND IMMEDIATELY HEADS THROUGH HARBOR.



M. F. HENDERSON, OF SHAWER FLEET. Before the new steamer M. F. Henderson started from the ways at the plant of the Portland Shipbuilding Company yesterday her engines were set in motion...

Counties to pass a week. Mr. Blair says his trip is one of the periodical kind that has to do with gathering new business in this territory.

United Kingdom Rate High. Bay of Biscay is taken at 81s 3d for Lumber Loading. Name & Company have set a new mark for lumber charters to the United Kingdom...

BANDON WORK NEARLY DONE Projects at Siuslaw and Coos Bay Said to Be Progressing. As soon as a shoal is removed near Bandon on which the depth has decreased from one to two feet...

STEAMER INTELLIGENCE. Due to Arrive. Name, From, Date. Beaver, San Pedro, In port...

PERSONAL MENTION. William Hawley, of Salem, is at the Annex. C. W. Burrows, a Ridgefield merchant, is at the Cornellus.

Marine Notes. Lumber laden for Cape Town the British ship Segura left down yesterday in tow of the steamer Monarch.

Stranger Goes Into Jewelry Store and Takes \$5000 in Jewels. Boise, Idaho, July 18.—Completely baffled over the cleverness of a diamond robber...

FACE BROKEN OUT? PIMPLES REPLACED BY SMOOTH, CLEAR SKIN. Try This Remedy at Our Risk.

BOISE ENJOYS MYSTERY DIAMOND ROBBERY PUZZLES POLICE FORCE.

FACE BROKEN OUT? PIMPLES REPLACED BY SMOOTH, CLEAR SKIN. Try This Remedy at Our Risk.

FACE BROKEN OUT? PIMPLES REPLACED BY SMOOTH, CLEAR SKIN. Try This Remedy at Our Risk.

FACE BROKEN OUT? PIMPLES REPLACED BY SMOOTH, CLEAR SKIN. Try This Remedy at Our Risk.

FACE BROKEN OUT? PIMPLES REPLACED BY SMOOTH, CLEAR SKIN. Try This Remedy at Our Risk.

FACE BROKEN OUT? PIMPLES REPLACED BY SMOOTH, CLEAR SKIN. Try This Remedy at Our Risk.

FACE BROKEN OUT? PIMPLES REPLACED BY SMOOTH, CLEAR SKIN. Try This Remedy at Our Risk.

FACE BROKEN OUT? PIMPLES REPLACED BY SMOOTH, CLEAR SKIN. Try This Remedy at Our Risk.

FACE BROKEN OUT? PIMPLES REPLACED BY SMOOTH, CLEAR SKIN. Try This Remedy at Our Risk.

FACE BROKEN OUT? PIMPLES REPLACED BY SMOOTH, CLEAR SKIN. Try This Remedy at Our Risk.

FACE BROKEN OUT? PIMPLES REPLACED BY SMOOTH, CLEAR SKIN. Try This Remedy at Our Risk.

WINDBREAK IN PLAN

Government to Rear Trees and Shrubs on Umatilla Wing.

AID TO RECLAMATION SEEN E. G. Hopsop, in Charge of Preliminary Work, Says Owners and Settlers Are Prompt and Progress is Gratifying.

Movements of Vessels. PORTLAND, July 18.—Arrived—Steamer Oregun, from Port San Luis...

Columbia River Bar Report. Condition at the mouth of the river at 5 P. M. smooth; wind south, six miles; weather cloudy.

Tides at Astoria Friday. High, 4:12 A. M. ... Low, 5:00 P. M.

Government to Rear Trees and Shrubs on Umatilla Wing. The response of the owners of the land embraced in the project in approving the agreements which pledge them to meet the charges of the improvement has measured up to expectations.

WINDBREAKS TO BE INSTALLED. The plans of the Reclamation Service include a strip of 30,000 acres with a strip of trees and shrubs 500 feet deep.

Organization is Complete. Northwestern Fidelity Company Formed to Acquire Marquam Block.

How She Cured Her Husband. "For five years my husband suffered with his stomach. The medicine he took only gave relief for a while, nothing cured, until I tried Mr. Chamberlain's Tablets."

FACE BROKEN OUT? PIMPLES REPLACED BY SMOOTH, CLEAR SKIN. Try This Remedy at Our Risk.

FACE BROKEN OUT? PIMPLES REPLACED BY SMOOTH, CLEAR SKIN. Try This Remedy at Our Risk.

FACE BROKEN OUT? PIMPLES REPLACED BY SMOOTH, CLEAR SKIN. Try This Remedy at Our Risk.

FACE BROKEN OUT? PIMPLES REPLACED BY SMOOTH, CLEAR SKIN. Try This Remedy at Our Risk.

FACE BROKEN OUT? PIMPLES REPLACED BY SMOOTH, CLEAR SKIN. Try This Remedy at Our Risk.

FACE BROKEN OUT? PIMPLES REPLACED BY SMOOTH, CLEAR SKIN. Try This Remedy at Our Risk.

FACE BROKEN OUT? PIMPLES REPLACED BY SMOOTH, CLEAR SKIN. Try This Remedy at Our Risk.

FACE BROKEN OUT? PIMPLES REPLACED BY SMOOTH, CLEAR SKIN. Try This Remedy at Our Risk.

FACE BROKEN OUT? PIMPLES REPLACED BY SMOOTH, CLEAR SKIN. Try This Remedy at Our Risk.

FACE BROKEN OUT? PIMPLES REPLACED BY SMOOTH, CLEAR SKIN. Try This Remedy at Our Risk.

FACE BROKEN OUT? PIMPLES REPLACED BY SMOOTH, CLEAR SKIN. Try This Remedy at Our Risk.

FACE BROKEN OUT? PIMPLES REPLACED BY SMOOTH, CLEAR SKIN. Try This Remedy at Our Risk.

WHY MAKE THE BURDEN HEAVIER?

There is a vast difference between a public utility and a private calling. One is clothed with public uses, the other is not.

A public utility pre-supposes public control and regulation. Franchises, when granted, contain regulative features. With-in recent years the states have passed and put into effect public utility acts, granting power to a commission to enforce such regulative features as it decides to order into effect.

Power to fix rates. To enforce service. And to fix a valuation upon the investment.

With this law in effect, the commission will have its hands tied effectively, if a duplicate investment is permitted in Portland for light and power. How?

Because in fixing the rate the commission must allow a reasonable rate of interest on both investments—that made by the old company and the new.

Why have two investments when one is sufficient and in the end permits of a more economical and satisfactory rate to the consumer?

PORTLAND RAILWAY, LIGHT & POWER COMPANY

formed for the purpose of acquiring the Marquam building, has just been completed. The incorporators are H. L. Pittock, C. H. Carey and Emory Olmstead.

"FORCE"

Made of Wheat—The Meat of All the Grains!

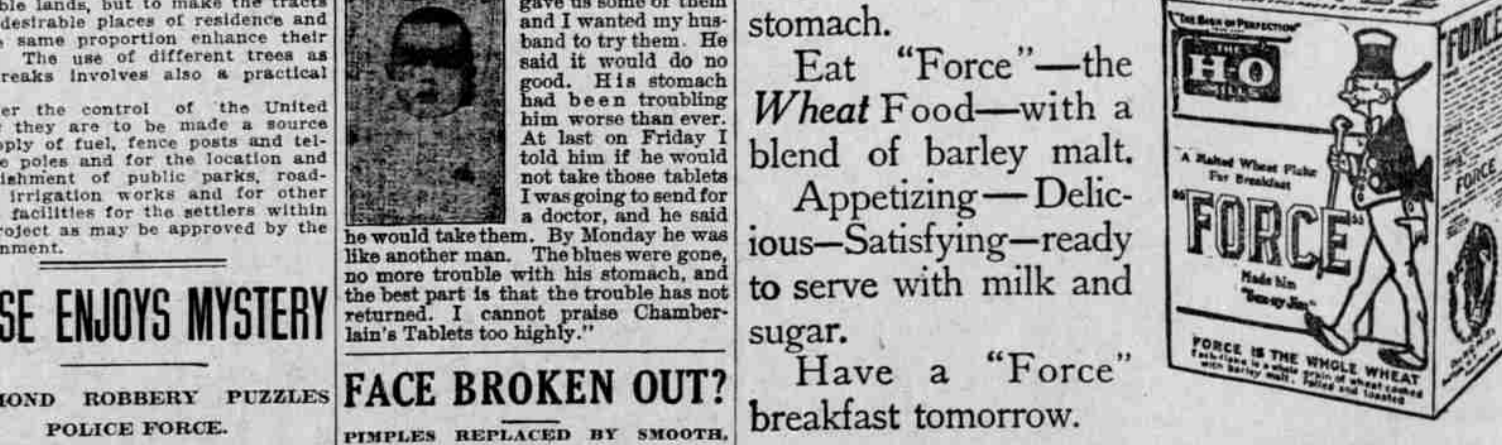
Rich in the most valuable food element—(Protein)—the bone-building, muscle-making substance—the nourishment of meat without its drawbacks.

This is why "Force" develops the child—sustains the grown-up—strengthens the old.

Another reason. Wheat cooked is easy to digest and assimilate. Avoid the heavy coarse, bulky grains that underfeed the system but overwork the stomach.

Eat "Force"—the Wheat Food—with a blend of barley malt. Appetizing—Delicious—Satisfying—ready to serve with milk and sugar.

Have a "Force" breakfast tomorrow.



Made by The H-O Company, Buffalo

THE BIG? BEAR-BEaver ROSE CITY THE BIG? THE SAN FRANCISCO & PORTLAND S. S. CO.

LARGEST AND NEWEST STEAMERS ON THE COAST. Sailing 9 A. M. July 21, 26, 31, August 5, 10, 15, 20, 25. SAN FRANCISCO—First-class \$10.00, \$12.00, \$15.00. Second-class \$6.00. LOS ANGELES—First-class \$11.50, \$13.50, \$16.50. Second-class \$7.50.