



## CALIFORNIA VOTE IS FOR ROOSEVELT

### President Is Second, LaFollette Third.

## CLARK IS DEMOCRATIC CHOICE

### Colonel Carries San Francisco, Where Taft Hope Lay.

## INTERIOR BALLOTING HEAVY

### Women, Experiencing First Presidential Primary, Cast Big Vote in Proportion to Number of Sex Registered.

SAN FRANCISCO, May 14.—Thirteen hundred and fifty-three precincts out of 2700 in the state, more than one-third of the total, give: Roosevelt, 56,908; Taft, 32,619; La Follette, 21,181; Clark, 18,502; Wilson, 208.

Roosevelt's majority in San Francisco is now estimated at 4000.

SAN DIEGO, Cal., May 14.—Twenty-two precincts out of 145 in San Diego County give La Follette 451, Roosevelt 373, Taft 198, Clark 442, Wilson 104.

LOS ANGELES, May 14.—Sixty-two precincts in Los Angeles City complete give Roosevelt 3438, Taft 1414, La Follette 812. Taft forces concede the loss of Pasadena to Roosevelt by more than 2 to 1.

SAN FRANCISCO, May 14.—At the first Presidential preference primary in which the women of California ever voted the state went overwhelmingly for Roosevelt on the Republican ticket and Clark on the Democratic ticket.

Taft ran a poor second and La Follette good third.

Only in San Francisco was the race at any moment close. Even in Northern California, where the Taft management relied for its strongest support, the Colonel led the way. In Los Angeles his vote was heavier than that of both his rivals combined, and the Southland in general was his stronghold, although San Diego gave La Follette a plurality.

San Francisco for Colonel.

The San Francisco registration of women was light, but the proportion of those registered who voted was heavy. When two-thirds of the precincts had been counted the indications were that the city had gone for Roosevelt by more than 3000.

Returns received up to 9:20 o'clock tonight from 282 out of 3700 precincts in the state at large give the following: Roosevelt 26,722, Taft 14,302, La Follette 9954, Clark 5974, Wilson 2504.

These returns were in the main from the five Congressional districts embracing the three most populous districts of the state—San Francisco and Los Angeles counties and the suburban area bordering San Francisco Bay.

Outside Districts All T. R.'s.

They are regarded as indicative of the general result.

In San Francisco County, in which were centered the hopes of the Taft managers, the vote was closer. Three hundred precincts complete out of 256: Roosevelt 15,422, Taft 12,618, La Follette 6773, Clark 2418, Wilson 2174.

Outside of San Francisco, Roosevelt apparently has carried every Congressional district, his vote being appreciably heavy in the interior counties.

All of the 25 delegates elected today were chosen at large and according to the state law they are bound by the popular expression of preference.

## MINNESOTA IS SOLID FOR T. R.

### All 24 Delegates Probably Will Be Instructed for Colonel.

ST. PAUL, May 14.—Minnesota's 24 delegates to the Chicago convention probably will be instructed solidly for Roosevelt, according to complete returns today from yesterday's county conventions. With the elections of the six delegates-at-large at the state convention at Minneapolis Thursday, the personnel of the delegation will be complete.

The delegates to the state convention will be divided thus: Roosevelt 176, Taft 75, La Follette 104.

## TROUT DIE BY HUNDREDS

### Fish Trying to Leap Dam Fall Back on Rocks and Are Killed.

SILVER LAKE, Or., May 14.—(Special.)—Hundreds of trout on their way to spawning grounds at the headwaters of Silver Creek have been battered to death at a dam just north of this town. As many more, leaping from the water in a vain effort to clear the dam and make their way up stream, have landed on the banks, where they were picked up by anglers or eaten by birds.

There is no fish ladder at the dam and the water at the outlet is so swift it is impossible for trout to overcome the current. The pool just below the dam literally swarms with thousands of trout ranging in size from six to 18 inches. These battle with the swift current until exhausted, then try to jump. Invariably they are swept back and beaten against the rocks until they turn bellies to the sun and float away dead.

## BOY SCOUTS FORM LIFE-LINE, SAVE 2

### TRAINING OF LADS PREVENTS DOUBLE DROWNING.

### Rescuer Unable to Help Companion With Cramp, Calls Squad.

"First Aid" Used.

HOOD RIVER, Or., May 14.—(Special.)—Forming a life line, reaching from the bank of the swimming pool to the deep water where one of their companions was drowning and pulling down with him the lad who had gone to his rescue, the members of the Hood River Boy Scouts yesterday, with a comrade that veteran life savers might have been proud of, saved the lives of the two boys.

The Scouts were swimming in the slough north of the O. W. R. & N. passenger depot. Chester Buell, while in the middle of the pool and about 20 feet from shallow water, was seized with a cramp. Roger Simpson immediately went to his rescue. However, the drowning boy was more than he could handle.

Realizing that he could not drag the boy to shallow water alone, he immediately called to his companions to form themselves into a living chain. He continued his hold of young Buell and in turn, was seized by Baird Stone, who led the chain of boys into the water.

The Buell boy was unconscious when landed and Young Simpson was pretty well exhausted. However, the Boy Scouts have been taught first aid to the injured by Scoutmaster Rector Edmund Trew Simpson and Dr. E. D. Kanaga, and applying their knowledge to the patient they quickly expelled the water from his lungs and resuscitated him.

## CREST OF FLOOD PASSING

### Danger From High Waters Along Lower Mississippi Remains.

NEW ORLEANS, May 14.—The crest of the disastrous Mississippi flood is passing out through the gateway of the river, 90 miles south of New Orleans, into the Gulf. At least, the river gauge readings so indicate. For the 72 hours ended at 7 A. M. today not a single Government gauge between New Orleans and St. Louis has recorded a rise.

But, while the flood wave appears to be passing, little relief from the high waters is promised the people in Louisiana in the weather bulletins issued today. These forecast a continuance of the danger stages throughout May.

## WAR IS DECLARED ON CONVENTION EVE

### All Peace Negotiations Are Broken Off.

## CROOKEDNESS IS CHARGED

### Taft and Roosevelt Factions Break Wide at Aberdeen.

## HALL DOORS BARRICADED

### State Committee Votes to Seat King

TAFT LIBRARY BURNED—T. R. Supporters Hurt—Speaches Incendiary.

BY M. M. MATTHEW.

ABERDEEN, Wash., May 14.—(Special.)—Police are guarding the doors of the Grand Theater tonight and before morning a stronger guard will be thrown about the hall selected for tomorrow's gathering of the Republican state convention.

By daylight the whole force of 25 extra officers and a number of regular men will be available for guard duty. Early in the evening workmen were put to work erecting strong wooden doors to fortify the entrance and other doors to the hall will be barred to protect them against attack tomorrow. Precautionary measures have been contemplated all along, but extra safeguards were thrown about the hall after the state committee voted 25 to 11 tonight to seat the Taft delegation from King County and the angry Roosevelt forces threatened "to be at the hall in the morning."

Peace Negotiations Stopped.

Earlier in the evening at a general Roosevelt caucus the steering committee of five appointed last night with full power to act on all questions was headed off from any further negotiations for peace.

The declaration was made in the

(Continued on Page 7.)

## WOMEN AGITATORS RESORT TO CLAWS

### TWO 'PICKETS' ATTACK OTHERS OF SEX ON WAY TO WORK.

### Strike in Seattle Tailor Shop Leads to Riot Call—Men Sympathizers Protect Female I. W. W.

SEATTLE, May 14.—(Special.)—Doing "picket duty," as they choose to term it, Becky Beck and Frieda Clyde, women agitators of the Industrial Workers of the World, protected by 20 male members of the Industrial Workers of the World, made an attack on a number of woman workers of the R. & R. tailor shop as they were entering the Polson building, 21 Columbia street, at 8 o'clock this morning, scratching and slapping several of the women, one of whom is nearly 60 years old.

A riot call was sent to police headquarters and a detachment of patrolmen rushed to the scene in an automobile. When they arrived the women had entered the building, and though there was a large crowd gathered about the entrance, the disturbance was over. The crowd was dispersed, but four patrolmen have been ordered to remain on the scene until further notice.

The B. & R. shop has been the scene of a strike since May 4, the cause of which varies, according to the source of the report.

## NEW SCHOOL WILL RISE

### Hillsboro Votes to Erect Building Costing \$35,000.

HILLSBORO, Or., May 14.—(Special.)—By a vote of 121 to 69 Hillsboro today voted to expend \$35,000 for an additional school site and school building. This vote was accomplished after two failures to carry.

The new structure is to be built either of brick or stone and will be for the use of the higher grades. A block site as the population is increasing so rapidly that more school room will be needed in a few years. Women taxpayers influenced largely today's results.

## Forest Grove Youth Drowns.

HILLSBORO, Or., May 14.—(Special.)—Lester Tumbin, aged 14 years, was drowned at Cornelius, Sunday afternoon, and the body recovered this morning by Hugh Brady, the Portland diver. The boy was in bathing with several companions when he was seized with cramps. He was an adopted son of Mrs. Tumbin, of Forest Grove, and was visiting the Broderick family, at Cornelius.

(Continued on Page 3.)

## GRIEVING HUSBAND ROBS WIFE'S GRAVE

### Body Taken Home; Food Placed at Lips.

## EFFORT MADE TO REVIVE HER

### Failing, Charles Hillegan Becomes Maniac.

## CURIOUS FACE SHOTGUN

### Heartbroken Man Refuses to Believe Wife is Dead—Day Spent in Vain Effort to Bring Back Life to Corpse.

CHICAGO, May 14.—(Special.)—There was a weird 24-hour struggle to conquer death in the home of Charles Hillegan, in Naperville today.

It was the struggle of Hillegan to bring his wife, who died two weeks ago back to life, and when it failed the heart-broken man's thread of reason snapped. He is now a raving maniac in the jail at Naperville.

The story of Hillegan's gruesome effort to bring his wife back from the grave reads like a contribution from the pen of Edgar Allan Poe. His actions and his present condition prove that he is a victim of the most crushing grief that human being could experience.

Mrs. Hillegan died while visiting relatives in Seattle two weeks ago. When informed that his wife was dead Hillegan would not believe it. Even when the body was brought back to Naperville he insisted that a physician should be called and that efforts be made to revive her. In the face of his obstinate assertions arguments were futile. He said that his relatives who refused to call physicians were robbing him of his wife.

During the funeral Sunday he sobbed

(Continued on Page 3.)

## 6 DOOMED MINERS FED THROUGH PIPE

### MEN TRAPPED BY CAVE-IN ARE THOUGHT LOST.

### Immense Mass of Debris Remains Between Entombed Sextet and Surface—Rescue Hope Small.

DULUTH, May 14.—Fed through a pipe driven down to them and encouraged by mine officials who call down that many miners are working to reach them, six of 15 men entombed last night at the 2000-foot level of the Norrie mine at Ironwood, Mich., are imprisoned tonight in a small space with five of their comrades dead beside them. Two other bodies were brought to the surface.

Something gave way last midnight on the 2000-foot level, where many men were at work. An avalanche was loosened into the pit. The majority of the men escaped up the right path, but 13 blundered into one of the many cross-sections of the mine, considering themselves safe.

Then with a roar that could be heard at the surface, the roof dropped down for yards and the 13 were trapped. Two of the 13 had started down the passageway and were overcome at the edge of the cave-in and killed. Searching parties found the bodies.

Five others were killed where they stood. Six backed close to the wall and stood still. The falling roof missed them. Then from the outside a many-sectioned pipe was started downward. Soon it reached the men and the mine officials learned that six were alive.

Double crews renewed the fight to save the lives of the six remaining. But many yards of broken timbers, rock and ore must be lifted out of the passageway and a new roof built as the diggers go.

The mine is controlled by the Oliver Mining Company of the United States Steel Corporation and at the offices it is said there was small hope that the six would be rescued.

## Railroad Men Inspect Work.

EUGENE, Or., May 14.—(Special.)—J. L. Buell, right-of-way agent for the Southern Pacific Company, accompanied by his wife, left this morning for Marshfield, via Roseburg, to look over the right of way of the Pacific Coast Line Railway, recently acquired by the Southern Pacific from the Sumner interests. W. J. Wilsey, connected with the Sumner roads, was in Eugene today filing papers in connection with rights of way along the coast, and also closing up affairs at the office that had been maintained here by the Pacific Great Western.

## PORTLAND IS REAL MECCA FOR SHRINE

### 500 Mystic Nobles See Wonders of City.

## FUN HAS NO ABATEMENT

### Famous Lu Lu Band of 60 Pieces Serenades Hosts.

## ALL WANT CONCLAVE HERE

### Red Fez From Every Section Dot Streets in Merry Throngs—Women Marvel at Flowers—Other Parties Are Due Today.

## AUTOMOBILES ARE NEEDED TO ACCOMMODATE VISITING SHRINERS AT DEPOT

All Portland Nobles who own machines are urged by the committee to be at the Union Depot at 7:30 this morning to receive the members of Damascus Temple, of Rochester, N. Y.; of Mount Temple, of St. Louis; and Aladdin Temple, of Columbus, O.

All visiting Shriners will be taken on a river trip on the steamer Haskins from 2 to 5 this afternoon.

Led by J. Frank Treat, of Fargo, N. D.; Phillip C. Schaffer, of Philadelphia; and Ethelbert F. Allen, of Kansas City, past imperial potentates of their order, nearly 500 Mystic Shriners from nearly every section of North America invaded Portland yesterday on their way home from the imperial conclave at Los Angeles and enjoyed the city's cooling breezes and the bountiful hospitality dispensed by the nobles of Al Kadar Temple.

Even before the Portland Shriners were out of bed the first special train bearing happy pilgrims from the Los Angeles meeting rolled into the Union Station. It bore the officers and the famous band of Lu Lu Temple, of Philadelphia. It was followed closely by a second section carrying additional members of the Philadelphia Temple. Then came three special cars bringing a party of 50 members of Syria Temple, Pittsburg, and Acca Temple, of Richmond, Va. The "Imperial Special," bearing Treat and the members of his party came in at 10 o'clock.

The regular trains arriving from the south at various times within the day likewise bore their full quota of red fezzed travelers. Almost as many women as men are in every party. Special entertainment is provided for them.

## Famous Lu Lu Band Is Here.

Of particular interest in yesterday's festivities was the gaily uniformed band of Lu Lu Temple. Its full strength consists of 60 pieces, but only 50 members are on the present trip. That number seems to be sufficient. Music such as that dispensed by this famous musical organization at intervals throughout the day has seldom been heard in Portland. The band marched at the head of the procession from the depot to the Portland Hotel yesterday morning, stopping in its progress to serenade the Shriners' convention. It played several selections in front of the hotel then broke up so that its members could participate in the fun and frolic that the Portland committee had provided. Thousands lined the streets and sidewalks in the vicinity of the Portland Hotel last night to listen to the concert.

This band of Lu Lu Temple has become one of the principal attractions of every Shriners' convention. No imperial conclave is complete without it. It has occupied a place of honor in every imperial procession in recent years and at the recent meeting at Los Angeles led the big parade of the week.

## Picturesque Figure Is Present.

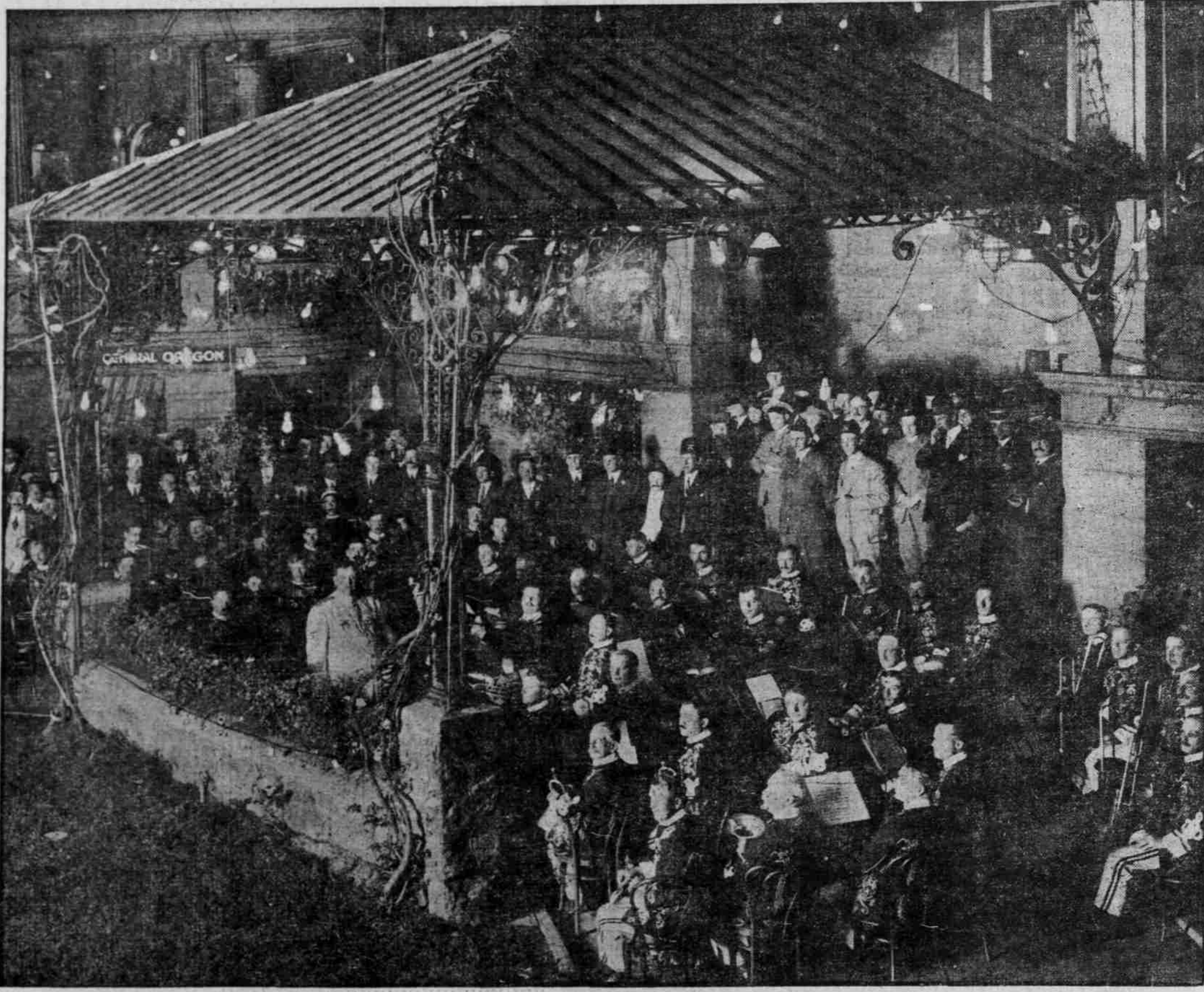
W. Freeland Kendrick, potentate of Lu Lu Temple, is responsible for the presence of the band in Portland yesterday. He financed the expedition of the whole organization across the continent and is escorting them on the present eight-day excursion through the Northwest on a leisurely pleasure trip back to Philadelphia. Mr. Kendrick also brought the well-trained Arab patrol of Lu Lu Temple to Los Angeles and took them as far as San Francisco on the return trip. Nearly all members of the patrol left the main Philadelphia party at San Francisco, returning home direct from that city. Kendrick is one of the picturesque figures at every imperial conclave. At present he holds the office of Second Ceremonial Master in the Imperial Council and his friends hope in due time to make him imperial potentate.

"If he brought the Lu Lu band and the Lu Lu patrol across the continent as potentate of his own temple, what will he do when he is Imperial Potentate?" was the question that some of the Portland nobles propounded after hearing of his present expedition.

"Any time that Portland wants the imperial conclave I'm ready to vote for it," declared J. Frank Treat last night. "I visited Portland last winter on my official tour as imperial potentate and it was one of the pleasantest experi-

(Continued on Page 14.)

SCENE IN COURT OF HOTEL PORTLAND LAST NIGHT WHEN CONCERT BY VISITING SHRINERS' BAND WAS IN PROGRESS.



SIXTY-FIVE MUSICIANS OF LU LU TEMPLE, PHILADELPHIA, WHO WERE GIVEN OVATION WHEN THEY PLAYED ON PORTLAND STREETS AND LATER IN OPEN-AIR RECITAL.