

VOTERS MUST PICK FROM LONG STRING

Oregon Ready to Write Its Verdict on List of Ambitious Politicians.

POLLS OPEN AT 8, CLOSE 7

Total Registration in Multnomah County 43,549, Including One Populist, 35,247 Republicans, 6403 Democrats.

POLLS OPEN AT 8 O'CLOCK AND CLOSE AT TONIGHT

The polls in today's primary election will be open from 8 o'clock this morning until 7 o'clock tonight. Members of the day election board will be on duty until the polls close when the night board will take charge and begin counting the ballots. In former primary elections in this state the polls were open only from noon until 7 P. M., but at the last session of the Legislature the law was changed so as to permit voting on primary day from 8 A. M. until 7 P. M.

CROWDS BLOCK STREETS

POLITICAL CAMPAIGN LIVELIEST ON RECORD.

For three months the people of Oregon have been sitting as a jury, measuring the qualifications of many candidates for public office, ranging from President of the United States to Constable and Coroner. They will write their verdict today. An idea of the multiplicity of candidates seeking office may be gathered from the fact that with 49 nominations to be made in Multnomah County, there are 141 aspirants on the Republican ticket. Candidates for the same number of offices on the Democratic ticket are not so plentiful.

WINNER HARD TO PICK

The Republicans will endorse either United States Senator Borah, of Idaho, or Thomas McCusker, La Follette's campaign manager in this state, for Vice-President by writing their names on the ballot. Democrats will endorse United States Senator Chamberlain for the same nomination.

NEW SELLING LOOKS GOOD

Indications, founded on reports from every county in the state, favor the nomination of Ben Selling for United States Senator over Oregon's senior Senator, Jonathan Bourne. Supporters of Bourne have been exceedingly active in the last ten days, but it is not believed they have turned the tide from Selling. An eighth-hour coup of the Bourne forces appeared yesterday when personal letters to voters in different parts of the state were mailed by F. C. Knapp, of this city; A. C. Dixon, of the Booth-Kelly Company, of Lane County; and other men of large financial interests. These gentlemen in their letters endorsed Bourne for renomination and re-election.

SOUTH BEND MAY ANNEX TERRITORY

SOUTH BEND, Wash., April 18.—(Special).—This city will make an attempt to induce the residents of Ekland Park and other suburban tracts between here and Raymond to annex themselves to the municipality. These residents will meet at the Commercial Club next Friday night to discuss the matter. The advantages of better roads, better streetcar fare and other inducements are being urged. It is estimated that the people now living outside the corporate limits.

PIONEERS PLAN PICNIC

BROWNVILLE, Or., April 18.—(Special).—The officers of the Linn County Pioneers Association met in this city and set the dates for the 1912 three days' picnic and reunion for June 15, 16 and 17.

AS LOW AS \$400 BUYS 10 ACRES

Every inducement here to the homeseeker and investor—ideal location, good water, best soil, etc.—just 1 1/2 miles from the railroad and steamboat landing at Gobie. You can easily make the trip in half an hour. Investigate it now. Other 10-acre tracts at COLUMBIA ACRES at \$500 and \$600 the tract, and on liberal installment. Write today for tract map and literature. Free for the asking.

F. B. HOLBROOK CO.

214 Lumber Exchange Building, Second and Stark Streets

LEGISLATIVE TICKET COMPLEX

Probably never before in this country was the situation regarding the Legislative ticket and the probable nominees more complicated. For Joint Representative, W. H. Chatten and David R. Loggren are the contestants. Mr. Chatten has a slight advantage in having served at one session from this county.

INDORZED AND SUPPORTED AS HE IS

Indorzed and supported as he is solidly by the law-abiding element of this county, Walter H. Evans is counted a reasonably sure winner of the nomination for District Attorney. Such will be the result if his supporters will be as alert in getting to the polls and voting as the hosts that stand for vice and disregard of the statutes. It is believed Mr. Evans' most formidable opponent is George J. Cameron, incumbent.

INDORZED AND SUPPORTED AS HE IS

Indorzed and supported as he is solidly by the law-abiding element of this county, Walter H. Evans is counted a reasonably sure winner of the nomination for District Attorney. Such will be the result if his supporters will be as alert in getting to the polls and voting as the hosts that stand for vice and disregard of the statutes. It is believed Mr. Evans' most formidable opponent is George J. Cameron, incumbent.

FAMOUS OLD "FAIR" GREATEST FEATURE

"Shakespeare's England" Will Be Produced in Revival of Historic Period.

OLD PASTIMES TO BE GIVEN

Merry and Picturesque Delights From "Ye Olden Time" to Mark Affair Given for Shakespeare Memorial.

WOMAN LIKES GYPSY LIFE

Lady Arthur Grosvenor Passes Summer in Unique Way.

LONDON, April 20.—(Special).—Undisturbed by the clouds on the industrial horizon, Lady Arthur Grosvenor is arranging to repeat the pleasant experiences she enjoyed last year, when accompanied by her two children, Barbara and Ivel, she took an extensive caravan tour through some of the finest south country scenery.

WINE AND LIQUORS SATURDAY SPECIAL

On account of our store being closed Friday, from 8:30 A. M. to 7:30 P. M., we will continue our usual Friday Special on Saturday. Goods will be delivered to all parts of the city.

THE BIG 3 BEAR-BEaver-ROSE CITY

S. S. KANSAS CITY Sails 9 A. M., Monday, April 22

Daylight ride down the Columbia. 45 hours to San Francisco.

FARE INCLUDING BERTH AND MEALS

San Francisco 1st Class \$10, \$12, \$15 2nd Class \$6.00

Los Angeles, 1st Class \$21.50, \$23.50, \$26.50 2nd Class \$11.35

Two days' sightseeing at San Francisco with meals and berth free en route to Los Angeles

Ticket Office, 142-3d Street

Phones, Main 2605, A 1402

FAMOUS OLD "FAIR" GREATEST FEATURE

"Shakespeare's England" Will Be Produced in Revival of Historic Period.

OLD PASTIMES TO BE GIVEN

Merry and Picturesque Delights From "Ye Olden Time" to Mark Affair Given for Shakespeare Memorial.

WOMAN LIKES GYPSY LIFE

Lady Arthur Grosvenor Passes Summer in Unique Way.

LONDON, April 20.—(Special).—Undisturbed by the clouds on the industrial horizon, Lady Arthur Grosvenor is arranging to repeat the pleasant experiences she enjoyed last year, when accompanied by her two children, Barbara and Ivel, she took an extensive caravan tour through some of the finest south country scenery.

WINE AND LIQUORS SATURDAY SPECIAL

On account of our store being closed Friday, from 8:30 A. M. to 7:30 P. M., we will continue our usual Friday Special on Saturday. Goods will be delivered to all parts of the city.

THE BIG 3 BEAR-BEaver-ROSE CITY

S. S. KANSAS CITY Sails 9 A. M., Monday, April 22

Daylight ride down the Columbia. 45 hours to San Francisco.

FARE INCLUDING BERTH AND MEALS

San Francisco 1st Class \$10, \$12, \$15 2nd Class \$6.00

Los Angeles, 1st Class \$21.50, \$23.50, \$26.50 2nd Class \$11.35

Two days' sightseeing at San Francisco with meals and berth free en route to Los Angeles

Ticket Office, 142-3d Street

Phones, Main 2605, A 1402



MEN'S CLOTHING is now being sold for less at GEVURTZ than at any other store in the city of Portland

These Suits would regularly sell up to \$25. Brown and tan fancy worsteds, tweeds and serges. Variety of colors and patterns. Hand-tailored, hand-felled padded collars. Fronts will not break. Latest style, and lined with serge or satin. Now... **\$9.85**

Blue serges and worsteds. Come in the season's latest and most popular patterns, including fancy blue stripe designs. This lot has silk and serge linings. A real nobby line of values up to \$30. Prices range from \$21.85 **\$14.85** to...

Brand new goods. Just arrived. Nobby new-pin stripes. All the new brown, gray and tan shades. Values up to \$25. Classy and stylish line for young men. **\$14.85** for...

Men's Trousers, strictly Spring style. Season's newest ideas. Worsteds in stripes and latest patterns and colors. Brown and gray predominate. **\$2.15**

These Suits are regular \$25 to \$35 values. Fechtmeier & Fischel EFF-EFF brand, "Sincerity Brand," and Kirschbaum Clothes included in this lot. Hand-tailored with first-class linings. The best value we have ever offered with guarantee. Priced at... **\$12.35**

Solid Brown and Tan Spring Suits with the up-to-date 2-button sack effect. New box back. They are silk and mohair lined. An unusual opportunity for tasty selection... **\$16.55**

Youths' Suits. Ages 16 to 20 years. Remarkable values in gray and brown tweeds. Suits that you ordinarily pay \$15 for. They are away below cost... **\$5.35**

Spring styles in Trousers. Tweeds and worsteds. Some stripe patterns and a few blue serges. Values run as high as \$5. Last thing in Spring cut... **\$2.85**

First to Second on Yamhill Street

WOMAN LIKES GYPSY LIFE

Lady Arthur Grosvenor Passes Summer in Unique Way.

LONDON, April 20.—(Special).—Undisturbed by the clouds on the industrial horizon, Lady Arthur Grosvenor is arranging to repeat the pleasant experiences she enjoyed last year, when accompanied by her two children, Barbara and Ivel, she took an extensive caravan tour through some of the finest south country scenery.

VOTE NUMBER 117 X

Harry C. McAllister for Sheriff, Honest, earnest, energetic, competent. (Paid Adv.)

Prohibit watered stocks of corporations. George S. Shepherd for Congress. (Paid adv.)

Prohibit watered stocks of corporations. George S. Shepherd for Congress. (Paid adv.)

Prohibit watered stocks of corporations. George S. Shepherd for Congress. (Paid adv.)

Prohibit watered stocks of corporations. George S. Shepherd for Congress. (Paid adv.)

Prohibit watered stocks of corporations. George S. Shepherd for Congress. (Paid adv.)

Prohibit watered stocks of corporations. George S. Shepherd for Congress. (Paid adv.)

Prohibit watered stocks of corporations. George S. Shepherd for Congress. (Paid adv.)

Prohibit watered stocks of corporations. George S. Shepherd for Congress. (Paid adv.)

Prohibit watered stocks of corporations. George S. Shepherd for Congress. (Paid adv.)

Prohibit watered stocks of corporations. George S. Shepherd for Congress. (Paid adv.)

Prohibit watered stocks of corporations. George S. Shepherd for Congress. (Paid adv.)

Prohibit watered stocks of corporations. George S. Shepherd for Congress. (Paid adv.)

Prohibit watered stocks of corporations. George S. Shepherd for Congress. (Paid adv.)

Prohibit watered stocks of corporations. George S. Shepherd for Congress. (Paid adv.)

Prohibit watered stocks of corporations. George S. Shepherd for Congress. (Paid adv.)

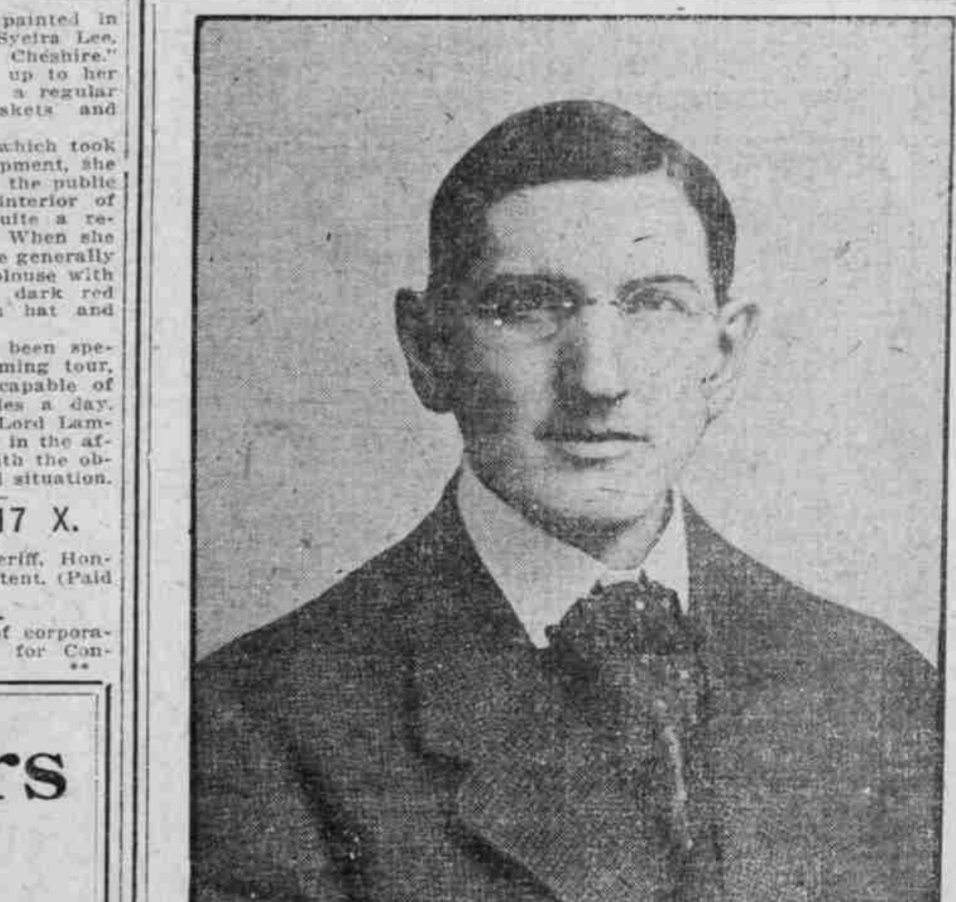
Prohibit watered stocks of corporations. George S. Shepherd for Congress. (Paid adv.)

Prohibit watered stocks of corporations. George S. Shepherd for Congress. (Paid adv.)

Prohibit watered stocks of corporations. George S. Shepherd for Congress. (Paid adv.)

Prohibit watered stocks of corporations. George S. Shepherd for Congress. (Paid adv.)

Prohibit watered stocks of corporations. George S. Shepherd for Congress. (Paid adv.)



Clyde B. Aitchison (Chairman of Railroad Commission.)

Clyde B. Aitchison

(Chairman of Railroad Commission.)

For Renomination

Railroad Commissioner

(Paid Advertisement.)

FOR

County School Superintendent

131 X ROBINSON, R. F.

FOR RE-ELECTION

AND MAINTAIN A PROGRESSIVE SUCCESSFUL SCHOOL POLICY.

(Paid advertisement.)