

FIREMEN INJURED AS LADDER FALLS

Captain and Pipeman Thrown 30 Feet in Blaze at Ellis Home.

PLUNGE THROUGH TREE

Officer Is Seriously Hurt and "Laddy" Returns to Scene After Wounds Are Dressed—Damage Near \$10,000.

Thrown 30 feet to the ground when a ladder on which they were mounted slipped sideways and the Harry Pollock, captain of Hose No. 4, and R. Lollaek, a pipeman of the same company, were seriously injured late last night in a fire which gutted the home of A. S. Ellis, a contractor, of 640 Gilliam street.

Over 25,000 cards have been given out in the last 10 days. Until Saturday night or while lots hold out, you'll find them in the various departments, where goods from the different countries are represented.

Splendid Noonday Service and Menu in Our Seventh-Floor Tea Room—Delightful Surroundings—Orchestra Music—Don't Merely Ask for Gloves, Ask for Perrin's Gloves—Mail Order Patrons, Send for Our New 130-Page Catalogue

THE MEIER & FRANK CO., 5th, 6th, Morrison and Alder Sts. WEATHER: FAIR TODAY. THE MEIER & FRANK COMPANY, ESTABLISHED 1857.

Across-the-Sea Sale of Laces and Embroideries

We've Given Out 25,000 Across-the-Sea Souvenir Postcards!

FROM hundreds of miles around, we have been called upon for these valuable souvenir Flag Postcards of United States and principal nations, being distributed during this notable Across-the-Sea Sale.



The Last 3 Days Bring Forth Many New Savings

WITH Laces and Embroideries at the height of the greatest vogue in years, this great Across-the-Sea Sale carries wonderful savings on the very widths, patterns and grades so much in demand!

These extraordinary specials for the last three days of the Across-the-Sea Sale:

30c Silk-Striped Gingham at 19c

A NEW lot of these beautiful Silk-Striped Gingham—were sold over 1200 yards in a single day the last time advertised. They are 27 inches wide, of a fine wearing quality, in pretty plaids and stripes of blue, pink, lavender, green, tan, etc. Strictly tub-proof colors. Beautiful Gingham for children's dresses, and Summer frocks. Splendid 30c grade, today, yd.

35c Pongee Shirtings 19c

For men's and boys' Shirts, new mannish waists for women, these fine Pongee Shirtings are in greatest demand. Blue, gray, white, cream, lavender grounds with various neat stripes. Regular 35c grade, 19c placed on sale today, the yard.

New Heather Linens 75c

Woven like the Scotch homespun—white, tan, brown with mottled colorings of black, blue, pink, etc. Nothing smarter for new full-dresses, suits and coats. At Meier & Frank's first, of course. The yard at 75c.

20c to 40c Laces, 15c

A great special lot of dainty Platte Val. Edges, 4 to 6 inches wide; French Val. Edges, 1 1/2 to 3 inches wide; also Barman Lace Edges and Insertions and Venise Bands, 1 to 2 1/2 inch. Reg. 20c to 40c grades.

To \$3 Lace Bands, 1.39

Handsome Venise and Ratine Bands, in white and cream. From 3 to 6 inches, for hat and dress trimmings. The heavy designs so popular. Regular \$1.75 to \$3 grades for last three days of Across-the-Sea Sale, the yard only \$1.39.

To 1.50 Embroid's 69c

Direct from St. Gall. An immense lot of beautiful Embroidery Bands, Edges and Flouncings, in exquisite Baby Irish designs. In demand for lingerie gowns. Regular \$1 to \$1.50 grades, for 3 days 69c.

To 40c Ruffling yd. 18c

Cambric Ruffling, 5 to 12 inches wide, with rows of tucking, machine Torchon insertion and edging. Very serviceable and dainty for trimming undershirts. The 20c to 40c grades, on sale, the yard 18c.

Robe Patterns \$6.98

Lovely Robe Patterns, which may be made up with very little work. On voile and batiste, in white and colors. Pattern consist of 3 1/2 yards of 42-inch Flouncings and 3 yards of Banding. Worth \$8.00 to \$6.98 \$10.00, at this sale \$6.98.

To 30c Embroid's 10c

Over 3000 yards of pretty St. Gall Embroideries. Swiss, nain-sook and Cambric Edges and Insertions, 1 to 9 inches wide, for children's wear and undermuslins. Splendid 18c to 30c grades for 3 days only 10c.

Eppo Elastic Band Petticoats Fit Like a Glove

MISS BLOCK, direct from the New York factory, is here in our second floor section to tell you of the many advantages the "Eppo" has over the old-style Petticoat.



Made with an invisible elastic waistband, fastening at the side with glove clasps. Fits any figure closely and smoothly. Truly, the "Eppo" is an ideal Petticoat for wear with the present narrow skirts. Here only in Portland.

At \$1.22—"Eppo" Petticoats of cotton, near-silk and sateen. Flouncings shirred or with rows of pin tucks. Black and colors.

At \$6 and \$6.50—handsome "Eppo" Petticoats of best quality messaline. Cut plain and straight for narrow skirts. Others lengthened with flouncings. Plain and changeable colors.

At \$1.65—"Eppo" Petticoats of cotton Epoline and Halyon fabrics. Double pleated flouncings. In black and colors.

\$5 and \$6 Eppos, \$3.65 Messalines and taffetas, in close-fitting styles with embroidered, fringed and pin-tucked flouncings. Mostly black—few colors. Regular \$5 and \$6 grades, \$3.65.

—Second Floor, Main Building—Mail Orders Filled.

Famous Fulton Blue Serge Is Used In Our \$15 Suits

"IMPOSSIBLE," said the big wholesale tailors when our Clothing Chief first placed the Fulton Mills' Blue Serge at the top of his specifications for our \$15 line! In the end we won out—the immense orders accomplished it.



Fulton Blue Serge has heretofore been used very rarely by any maker in \$20 Suits—some even consider it costs too much to put into their \$25 line.

—Third Floor, New Building.

The 25th Anniversary of "Onyx" Hosiery—a Sale

TODAY we continue the extraordinary sale of famous "Onyx" Hosiery for men and women, which is being held all over the country this week in celebration of the 25th Anniversary of Lord & Taylor, the makers!



FOR WOMEN

Women's 50c Onyx Gauze Lisle Hose—Black, tan and white with "DUB-L" top, high spliced heel and double sole. Onyx Anniversary 3 pairs \$1, pair only 35c.

FOR MEN

Men's 50c Onyx Pure Silk Socks—Black and colors, with lisle heel and sole. Onyx Anniversary 3 pairs \$1, pair only 35c.

Morris Supreme Hams, Lb. 17c

MORRIS SUPREME HAMS, with a national reputation for their sugar-cured sweetness and old-fashioned hickory smoked flavor!

- We've secured 2000 genuine Supreme Eastern Hams for today's sale. Medium size. Not over one to a customer and none to dealers. We priced them at, lb. 17c
- Yellow Corn Meal, sack, only 25c
- Maine Succotash, dozen cans \$1.20
- Standard Tomatoes, dozen \$1.10
- Cove Oysters, 3 cans for only 25c
- 25c Grape Juice, the bottle 20c
- Hartley's Marmalade, the jar 25c
- Table Peaches, 3 large cans for 50c
- Table Apricots, 3 large cans 50c
- Sall Laundry Soap, 9 bars for 25c
- 10c Ivory Soap, 4 bars for only 30c
- Maine Corne, the dozen cans \$1.20

3000 Men's 25c Wash Ties

IT'LL be the wise man who comes himself or sends for at least a dozen of these pretty, new Wash Ties at today's sale price!



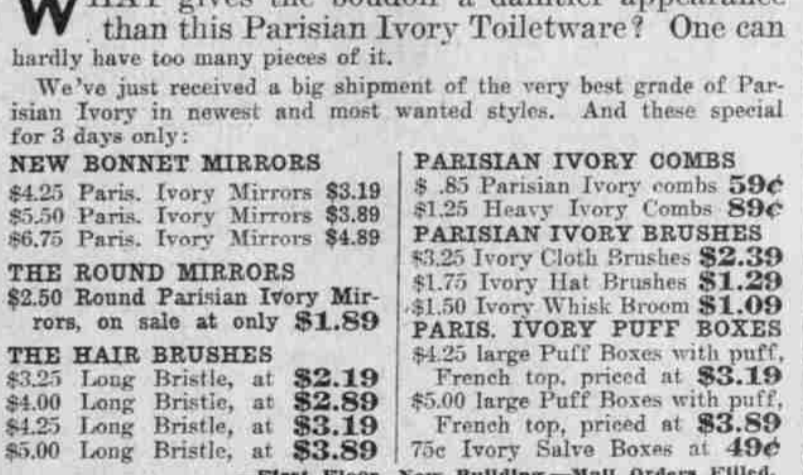
The manufacturer made up 3000 of them for us during his dull season—Ties which we could not buy regularly to sell under 25c.

- White Reps Fancy Woven Stripes. Neat Dots and Figures.
- White Piques
- White Madrases
- New Plain Colors
- All 1 1/2 inches wide and 50 inches long.



Sale of Parisian Ivory!

WHAT gives the boudoir a daintier appearance than this Parisian Ivory Toilettware? One can hardly have too many pieces of it.



NEW BONNET MIRRORS \$3.19

PARISIAN IVORY COMBS \$3.89

\$8 Mower \$6.49

Save On Reliable Trunks!

HERE'S just the sturdy, moderate-priced Trunk you want for Summer vacation and outing trips.



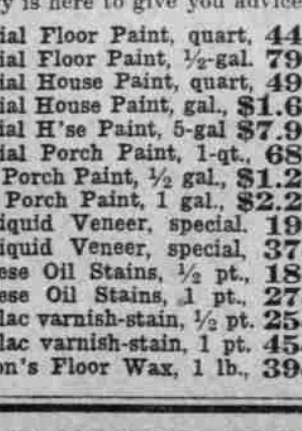
Canvas covered, water-proof Trunks, with brass trimmings, and fiber bound. Art cloth lined with two leather straps and two large trays. All sizes at special prices for three days only:

- \$10.25 Trunks, 32-inch, at \$8.70
- \$11.25 Trunks, 36-inch, at \$9.45
- \$10.75 Trunks, 34-inch, at \$9.15
- \$11.75 Trunks, 38-inch, at \$9.95
- \$7.50 Cowhide Suitcases—Full leather cowhide, linen-lined, with shirt-fold. Size 24 inches long, 6 inches deep, 13 inches wide. Extra strong handle, with brass lock and bolts. Low price, this sale \$5.45

—Fourth Floor, Main Building.—Mail Orders Filled.

\$5 Lawn Mowers \$3.99

The easy-running, ball-bearing Reliance make, Number 1 1/2, as illustrated; 14-inch size, with three blades. Sure to give lasting satisfaction. Our regular \$5.00 Reliance Mowers today in this big April sale at \$3.99



—First Floor, New Building.—Mail Orders Filled.

\$4.75 Lawn Mower \$3.69

The popular Reliance make—splendid value even at the regular price. No. 2 style, 14-inch size, with 4 cutting blades. \$3.69 \$4.75 regularly. Today \$3.69

—First Floor, New Building.—Mail Orders Filled.

Sale of Paints, Brushes and Supplies

Timely specials on supplies needed for the renovating and freshening the home. But few of the offerings mentioned here. An expert from the factory is here to give you advice on Paints.

- Imperial Floor Paint, quart, 44c
- Imperial Floor Paint, 1/2-gal, 79c
- Imperial House Paint, quart, 49c
- Imperial House Paint, gal, \$1.69
- Imperial House Paint, 5-gal, \$7.98
- Imperial Porch Paint, 1-gal, 68c
- Imp'l Porch Paint, 1/2 gal., \$1.22
- Imp'l Porch Paint, 1 pt., \$2.24
- 25c Liquid Veneer, special, 19c
- 50c Liquid Veneer, special, 37c
- Japanese Oil Stains, 1/2 pt., 18c
- Japanese Oil Stains, 1 pt., 27c
- Jap-a-lac varnish-stain, 1/2 pt., 25c
- Jap-a-lac varnish-stain, 1 pt., 45c
- Johnson's Floor Wax, 4 lb., \$1.49
- 10c black bristle Varnish Brushes, 1-inch, special this sale at 8c
- 15c black bristle Varnish Brushes, 1 1/2-inch, special this sale 12c
- 25c black bristle Varnish Brushes, 2-inch, special this sale at 19c
- 30c black bristle Varnish Brushes, 2 1/2-inch, special this sale 24c
- 40c black bristle Varnish Brushes, 3-inch, special this sale at 33c
- 25c black bristle Paint Brushes, 2-inch, special this sale at 19c
- 30c black bristle Paint Brushes, 2 1/2-inch, special this sale 24c

PIERCE'S NAME OMITTED

Democratic Candidate for Senator Worried by Ballot Error.

WALTER M. PIERCE, candidate for the Democratic nomination for United States Senator, was considerably worried and alarmed last night by the receipt of a telegram from his agent, F. B. Curry, at Hot Lake, Or., informing him that his name had been left off the ballot in Malheur County.

"What I am afraid of," said Mr. Pierce, "is that my name may also be missing from other counties as well and also that people, on perceiving no mention of my name, may not go to the polls at all, or if they do go will not take the trouble to inquire, but vote for one of the others. The difficulty is to reach every voter in time to let him know definitely that of course I am still running. To do this notices will be sent to each voting place and messengers were being sent out to notify all election judges and workers last night."

The telegram runs as follows: "Your name left off ballot Malheur County. Am arranging notice to be sent each voting place, explaining that messengers are being sent to notify all election judges and workers tonight. Think this will cause your friends over state to work harder." F. B. CURRY.

Vote for Teddy; he started the Panama Canal; let him finish it. (Paid Adv.)