

RAILWAY SERVICE RAPIDLY RESTORED

Pair News Are Overcoming Effects Wrought by Snow Storm.

ALL TRAINS RELEASED

W. R. & N. Line Clear to Union, 18 Miles East, Where Snowdrift Is Holding Trains—Central Oregon Lines Blocked.

RAILROAD SITUATION IN PORTLAND AFTER 3-DAY STORM. O.-W. R. & N. Company—Main line clear to Union, 18 miles east, where snow drift is holding all trains.

Even an opportunity to repair their graph wires in the immediate vicinity of Portland, the railroads have some of the most serious consequences of the storm that for more than 48 hours had them at its mercy.

Large force of men was sent out to the shops at La Grande to tear down the snowbank. They worked late last night. Eastbound service while was held up also at that time.

Supplemental Service Arranged. The accommodations at Vancouver and St. Paul residents who have been unable to travel to and from Portland, the O. W. R. & N. Bank yesterday arranged the following supplemental service:

Electric Lines Open. The electric lines are running on again, all the wire trouble having been remedied. Occasional delays on account of ice or snow were reported various times yesterday, but the lines were kept open.

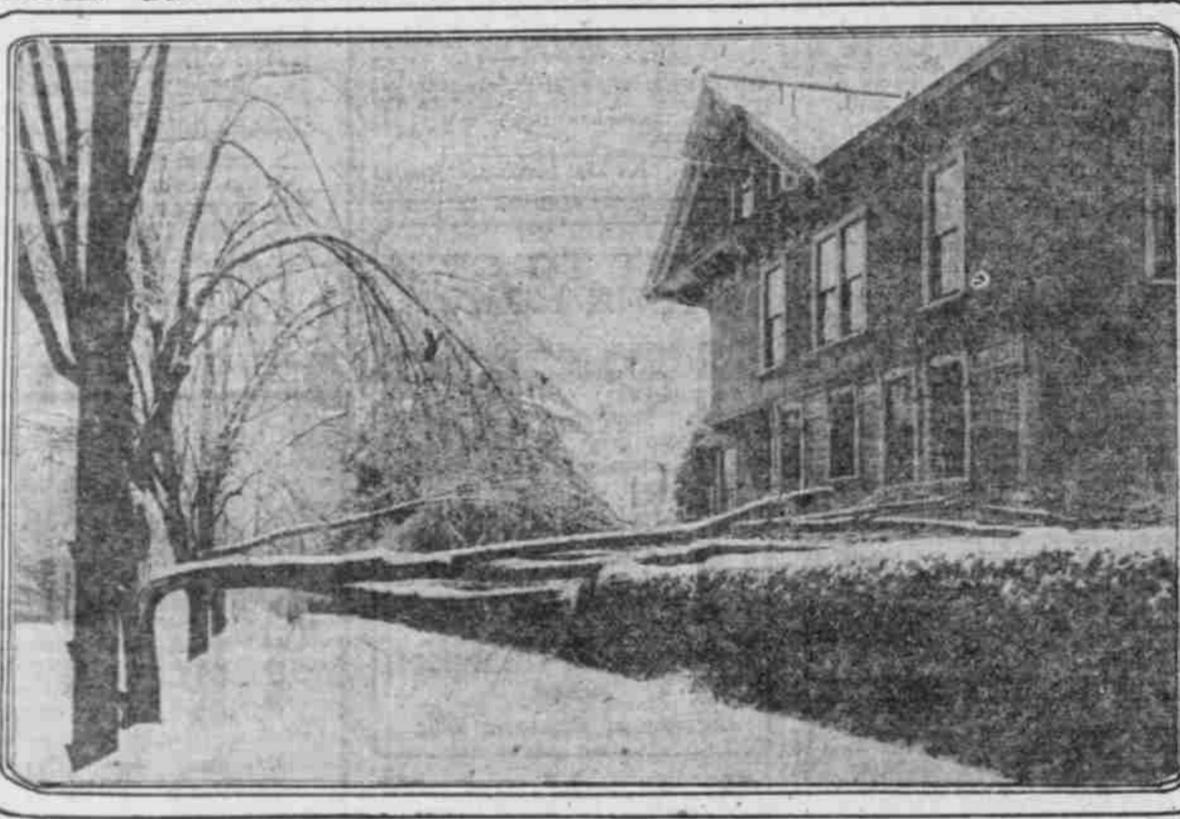
CAMERA CATCHES UNUSUAL WINTER SCENES IN PORTLAND.



SOUTH EAST CORNER SIXTH AND JEFFERSON.



VISTA ON KEARNEY ST. BETWEEN 20th AND 21st STS.



IRVING STREET BETWEEN 19th AND 20th.

to withstand the severest storms, but when their food supply stops and their vitality is lowered they begin to suffer. Our office has received a donation of five sacks of grain from the Ainsworth dock, which will be taken tomorrow by some of our wardens to be scattered along the Peninsula.

LONE FIR DAMAGE IS GREAT

Cemetery Shade Trees Fall, Shrubbery Crushed Under Ice. In Lone Fir Cemetery there has been great destruction of trees and shrubbery, the devastation being among the maples and other shade trees particularly.

SCHOOLS CLOSE FOR DAY

STORM IMPAIRS VENTILATING AND HEATING SYSTEMS.

But 21 Buildings Out of 53 Open. Superintendent Expects to Resume Class Work Today.

Demoralization of the electric system of the city, which deprived many of the school buildings of the motive power to run the fans in their ventilating systems, made it necessary to close the majority of the schools yesterday.

Snow Cuts Off Supply of Food for Birds

Everyone Urged to Place Provisions in Their Reach. GAME WARDEN PINLEY urgently requests all persons to throw out each day grain, bread and other scraps

for the birds who have suffered from lack of food since the storm began. Mr. Pinley said yesterday: "This storm has worked a serious hardship for birds of all kinds, because in an ordinary storm they can scratch down through the snow and find something to eat. They are unable to do this now for the reason that there is a coating of ice on the ground which even the larger birds cannot penetrate.

Employment Given 125 Men.

Employment for 125 needy men was obtained yesterday by the Industrial Employment Bureau of the Young Men's Christian Association in clearing snow. Almost all were engaged in clearing the tracks of the street railway and will be engaged for several days.

FUEL IS HARD TO GET

DEALERS' SUPPLIES AMPLE, BUT DELIVERY DIFFICULT.

Suffering Imminent if Weather Does Not Moderate—Auto Trucks Cope With Slush.

Unless the weather conditions have so moderated today that deliveries by team on the streets of Portland will be possible, one-fifth of the residents face a fuel famine. With the exception of one East Side concern which does all its delivery work by auto trucks, coal and wood supply houses declare that they have hundreds of orders listed, with no apparent possibility of handling them for the next few days.

All the fuel companies reported that the bridges were absolutely impassable. Business men on the streets made general complaint of the "steam not being up."

But this was only the commencement. The "valorization" plan was evolved in Brazil. Through this plan the government, using the revenues derived from the export duties for the purposes, takes all of the surplus profit in a season of large yields and holds it off the market, thus keeping the supply down to the demands of the market and permitting the planters to receive a much higher price than they would otherwise have done.

The United States consumes more Brazilian coffee than does the rest of the world. We are the best customers of Brazil, and Brazil buys little from us. Now Brazil is promoting, financing and maintaining a trust designed, and working effectively for the purpose, to compel American consumers to pay an exorbitant price for the coffee they use.

Standard statistics of the coffee trade show a falling off in sales during the last two years of over two hundred million pounds. Authenticated reports from the Postum factories in this city show a tremendous increase in the sale of Postum in a like period of time.

to make the West Side condition more critical. Had not a large number of the first-class hotels changed to liquid fuel, the situation would have been worse yesterday. One house supplying fuel briquets reported that while the demand for its product up to this time had not been excessive, now it is absolutely cleaned out.

"The small dealers," he said, "have quietly slipped to cover and one or two companies have to handle the peak load. Any case where residents are actually freezing or in urgent need of fuel we handle, but at that we have hundreds of orders on hand, with no power of delivery until the storm abates. At that we have every horse shod with rubber, auto trucks and two sleds. So I think we are as fair as possible. Notwithstanding the extra delivery cost, the price has not been boosted."

"We have an abundant supply; the only trouble is delivery," he said. "Our teams cannot cross the bridges and our auto wagons are just swamped." M. L. McGraw, of the East Side Fuel Company, said: "I think we are the only persons in town this weather does not freeze. We are from the East; we like it and are prepared for it. I don't think we have had to turn down an order yet, but the situation is principally owing to our auto trucks, which in weather like this beat teams all hollow."

Every fuel dealer questioned said stocks on hand were large. Delivery was the only difficult feature, which grew more serious as the home short-ages grew.

'CLEAN WALKS' IS ORDER

POLICE CHIEF TELLS FORCE TO ENFORCE ORDINANCE.

Arrest of Leaseholders and Property Owners to Follow if Paths Are Not Cleared This Morning.

Sidewalks must be cleared of slush, snow and ice this morning, or the leaseholders and property owners whose holdings abut on the neglected spaces will be arrested, says Chief of Police Glover. Instructions were given Acting Captain Hiley yesterday to set his men at the work of enforcing the ordinance the first thing this morning.

Ashland Weather Normal. ASHLAND, Or., Jan. 8.—(Special.)—Normal winter weather conditions continue here. The temperature early this morning was 32 degrees, 46 in the middle of the day and 44 at 8:30 o'clock. A total of one-tenth of an inch of rain fell during the 24 hours ending this afternoon.

Advertisement for Postum featuring the headline 'A Hold-Up' and 'An Oppressive Trust'. The text discusses coffee taxation and the benefits of Postum. Handwritten annotations include 'He did', 'Compels', 'Tax American', 'Get this clear', and 'Then this'.

Advertisement for Postum cereal featuring the headline 'POSTUM' and 'A Big Package About 1 1/2 lbs. Costs 25 cts. At Grocers'. The text describes Postum as a pure food-drink and provides instructions for use.