

INDUSTRIAL GROWTH IN PACIFIC NORTHWEST

WIRE RUNS DONKEY

Electricity Supplants Steam in Logging Camp.

COOS EXPERIMENT SUCCESS

C. A. Smith Lumber Company Finds New Method Would Mean Saving of \$150,000 Yearly—Cost of Logs Greatly Reduced.

MARSHFIELD, Or., Oct. 22.—(Special.)—Success of the plan to use electric power instead of steam for logging has been established by tests made in this city by the Smith-Powers Logging & Manufacturing Company, of Marshfield. The new process of operation by electricity will revolutionize the logging business in this locality, if not in the whole Coast country, and the tests which are being made here have attracted the attention of lumbermen throughout the Coast district.

While the establishment of the necessary plant and equipment will require the Smith-Powers Company to expend a large sum of money, there will be a great saving over the use of steam, which it is believed justifies the outlay.

The plan in short is to build near the Smith mill a large electric generating plant where the waste wood from the mill will be burned as fuel. From this central generating plant the electric power will be transmitted by wire under high voltage to the various logging camps throughout the country. At the camps it will be transformed to the proper voltage for the motors. Electric donkeys instead of steam donkeys will be used to pull the logs.

The tests are being made by the Smith-Powers Company in connection with the Westinghouse Electric Manufacturing Company and the Willamette Iron and Steel Works. The latter company furnished the logging yarder, A. H. Powers, head of the logging company, worked out the logging details. The Westinghouse company is here looking after the electrical features.

Arrangement of the electric donkey to the same as with a steam engine except that in place of the steam engine is substituted a 165 horsepower motor which is connected to the big drum of the yarder.

Mr. Powers estimates that in the seven logging camps operated in this country by his company he uses for fuel in the steam engine wood which if saved and cut into lumber would be worth \$50,000 a year. The electric generating plant will burn the waste wood from the mill. The engineer required for the electric machine need be of no higher pay than the engineer of the steam engine, while the steam engine requires two woodchoppers and a fireman, which are done away with by the use of electric machines. Mr. Powers estimates that he can save the wages of 100 men or more in his camps.

Fire loss caused by sparks from the steam engines in the woods and the waste wood which is estimated at \$150,000 a year. The electricity eliminates this danger and expense. Mr. Powers says that it would cost the Smith companies about \$450,000 to make the change from steam to electricity, but that the savings there will be a saving of \$150,000 a year. Mr. Powers says he is convinced that under ordinary conditions on the Coast the use of electricity by any of the logging companies will enable them to take out logs at a saving of about \$1 a thousand over the cost where steam engines are used.

GOLD MINE WORK STEADY

Many Hydraulic Dredges to Be Installed at Footh Creek.

GOLD HILL, Or., Oct. 22.—(Special.)—The Champlin electric gold dredge on Footh Creek, nine miles from here, is working day and night. This dredge is the biggest plant proposed in Southern Oregon, and pays its owners, who are Chicago millionaires, handsomely each year.

The entire Footh Creek district is rich in placer gold and many hydraulic mines will soon be in operation there, the largest of which is the mine owned by local people, which has a record of production of many thousands of dollars.

Placer mines in the Woodville district, contiguous to the Footh Creek district, are also getting in shape for the winter's run, which will begin as soon as the rains supply water for their ditches. The handsomest exhibit of placer gold at the recent Grants Pass mining congress came from the Shibley mine in the Woodville district.

Nearly all of the placer mines in this section have been worked since the pioneer placer discoveries in Southern Oregon in the '60s, and their extent and richness are proved by the fact that they have been profitably worked ever since.

HOME PURCHASES MOTIVE

Easterners Invest in Hood River Apple Lands.

HOOD RIVER, Or., Oct. 22.—(Special.)—Ninety per cent of the purchases made in the Hood River Valley this summer by Eastern people have been for the purpose of home locations. The most recent man to locate here permanently with his family is Frank R. Cram, of St. Louis, where for a number of years he had been secretary of the offices of the American Central Life Insurance Company.

Mr. Cram purchased, through G. Y. Edwards & Co., 15 acres of the tract of W. B. Allen in the Oak Grove district. While the consideration has not been made public, it is understood that the tract, the greater portion of which is in bearing, brought the top figure.

Immediately on purchasing, Mr. Cram resigned his former position. He will erect a handsome log bungalow residence on the property and he and his family will reside there.

COURTHOUSE BUILT OVER

Work of Remodelling Building Goes on Apace.

OREGON CITY, Or., Oct. 22.—(Special.)—The work of remodeling and building an addition to the Clackamas County Courthouse is progressing rapidly, and Clarence Simmons, who is in

charge, says it will be completed by January 1. New partitions have been made on the second floor so as to give additional space to all the departments. The old Circuit Court room space has been utilized in this work and the second floor will be on the second floor of the addition. The County Court room, which has been moved to the second floor, will be used by the Circuit Court until the new building is ready.

County Judge Beattie will have a private office adjoining the courtroom. The County Surveyor will have two rooms, a new grand jury room will be provided and the District Attorney and Circuit Judges will have private offices.

The Sheriff's office on the ground floor will occupy the space formerly used by this department and the County Clerk, and the County Clerk's office will be where the old County Court room and the County Judge's office were. There will be no change in the Treasurer's and Assessor's offices. The Recorder will have the present office and a part of the ground floor of the addition. A large vault for use of the Sheriff and County Clerk is being built in the addition. The Sheriff will use the old vault.

It is estimated that the work will cost about \$14,600. The County Court

BAY CITY GROWING

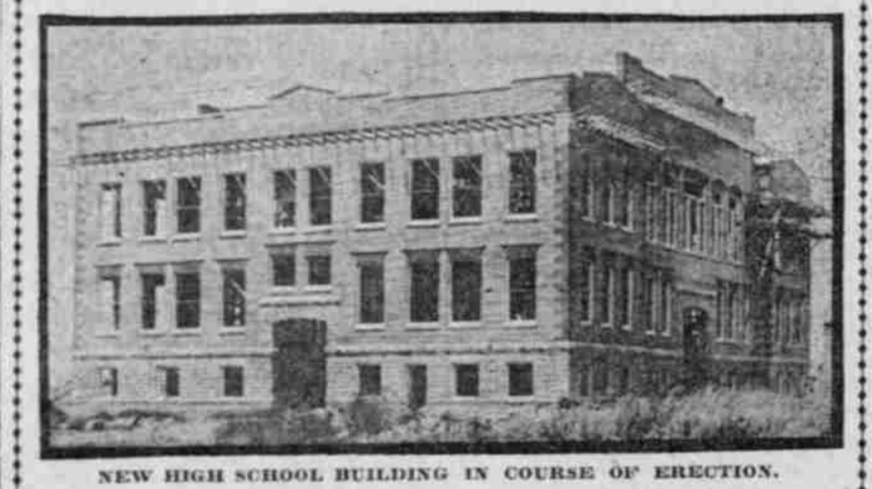
Advent of Railroad Starts Boom in Realty Holdings.

TILLAMOOK LAND FERTILE

Property in Demand for Truck Gardens Sells for \$500 an Acre and First Year Will Produce \$50 to \$200 in Crops.

BAY CITY, Or., Oct. 22.—(Special.)—Completion of the Pacific Railroad & Navigation Company's road to this county has caused activity in real estate and industrial conditions. Much real estate has changed hands in the county within the past week or so, especially in Bay City, where over ten transfers were made in three days.

TYPE OF IMPROVEMENTS BEING MADE AT LAKEVIEW.



NEW HIGH SCHOOL BUILDING IN COURSE OF ERECTION.

is supervising the work. Most of the plastering has been done on the second floor of the old building and all of the exterior has been painted.

TREE NETS \$10 A YEAR

CLARK COUNTY HORTICULTURE INSPECTOR URGES PLANTING.

Climate Adapted to Growth of Walnuts and in 20 Years Yield Will Be 60 Pounds a Tree.

VANCOUVER, Wash., Oct. 22.—(Special.)—An English walnut tree, planted by A. A. Quarberg, horticulture inspector for this district, 18 years ago, is paying 10 per cent interest on \$100 annually and has been for the past four years. Each year the increase is noted and in a few years more this tree will be paying 20 per cent annually on \$100. Mr. Quarberg has several other trees in his walnut orchard, which do almost as well.

Mr. Quarberg is attempting to have the real estate dealers, and those owning homes here, plant one or more walnut trees on their city lots. These trees, if given just a little care, will give as much shade as a maple tree, and in a few years will yield more nuts than one family could possibly use. One walnut tree planted from 15 to 18 years ago, yields annually from 40 to 60 pounds of the finest kind of walnuts, which sell readily for from 20 to 25 cents a pound in the open market.

DAM BUILDS AT CHERRY

Over 70 Acres of Water Will Hold Lumber Company's Logs.

FOREST GROVE, Or., Oct. 22.—(Special.)—Construction work on a huge dam across the Tualatin River at the new townsite, Cherry Grove, will begin at once by the Lovgren Lumber Company in the southeast section of Washington County, a few miles from the town of Gaston. This dam, which will contain more than 70 acres of water, will float the logs of the company, from which millions of feet of lumber will be produced.

BUILDING FUND GROWS

LAKEVIEW HIGH SCHOOL WILL COST \$60,000.

Petition Requests Board of Trustees to Call Special Election to Vote on New Bonds.

LAKEVIEW, Or., Oct. 22.—(Special.)—A petition has been prepared requesting the board of trustees to have a special election called to vote additional 20-year interest-bearing bonds in the sum of \$20,000 to complete and equip the new high school building now under construction.

ENGINE FOR LOGGING BY ELECTRICITY, IN USE NEAR MARSFIELD.



FIRST ELECTRIC LOGGING DONKEY EVER BUILT.

Free Cooking School Tuesday at 2:30 P. M., Fourth Floor, Lectures By Mrs. Hawley—Cooking Bread and Nougat Candy by Electricity

Advertisement for Olds, Wortman & King, Purveyors of Pure Foods. Features a 2-day sale of groceries with a list of items and prices: Hams 16c Lb., Bacon 18c Lb., Shoulders 11c, Flour \$1.25, etc.

Advertisement for M. J. B. Coffee & Tree Tea. Includes the slogan 'Do you know Tree Tea?' and 'M. J. B. Coffee & Tree Tea'. Mentions 'RECEIVED GOLD MEDALS AT THE ALASKA-YUKON-PACIFIC EXPOSITION' and 'WHY?'. Lists prices for various coffee and tea products.

Articles about Winesaps to be planted in Stanfield, Oregon, and Eugene, Oregon. Discusses agricultural improvements and business developments in the region.

Large advertisement for Hot Lake Sanatorium. Features a map of Oregon showing the location of Hot Lake. Text describes the sanatorium's facilities, including 'UD & WATER BATHS', and provides information about travel and rates.