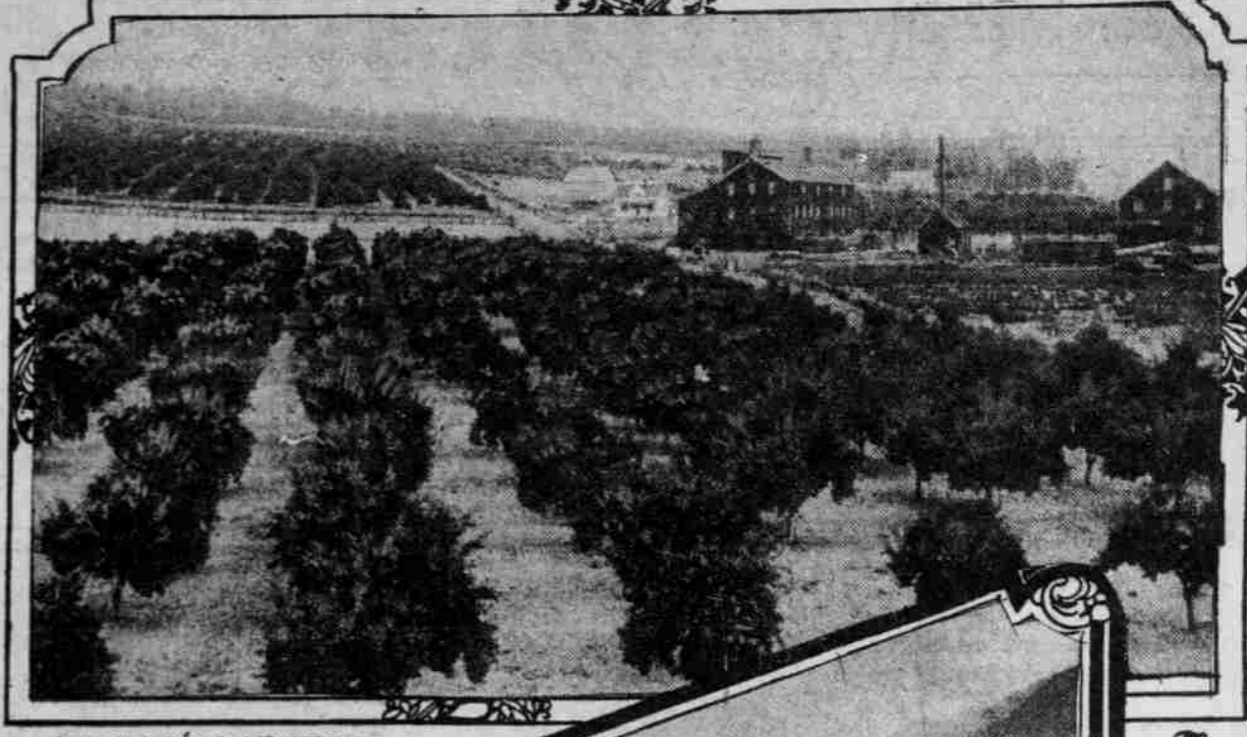


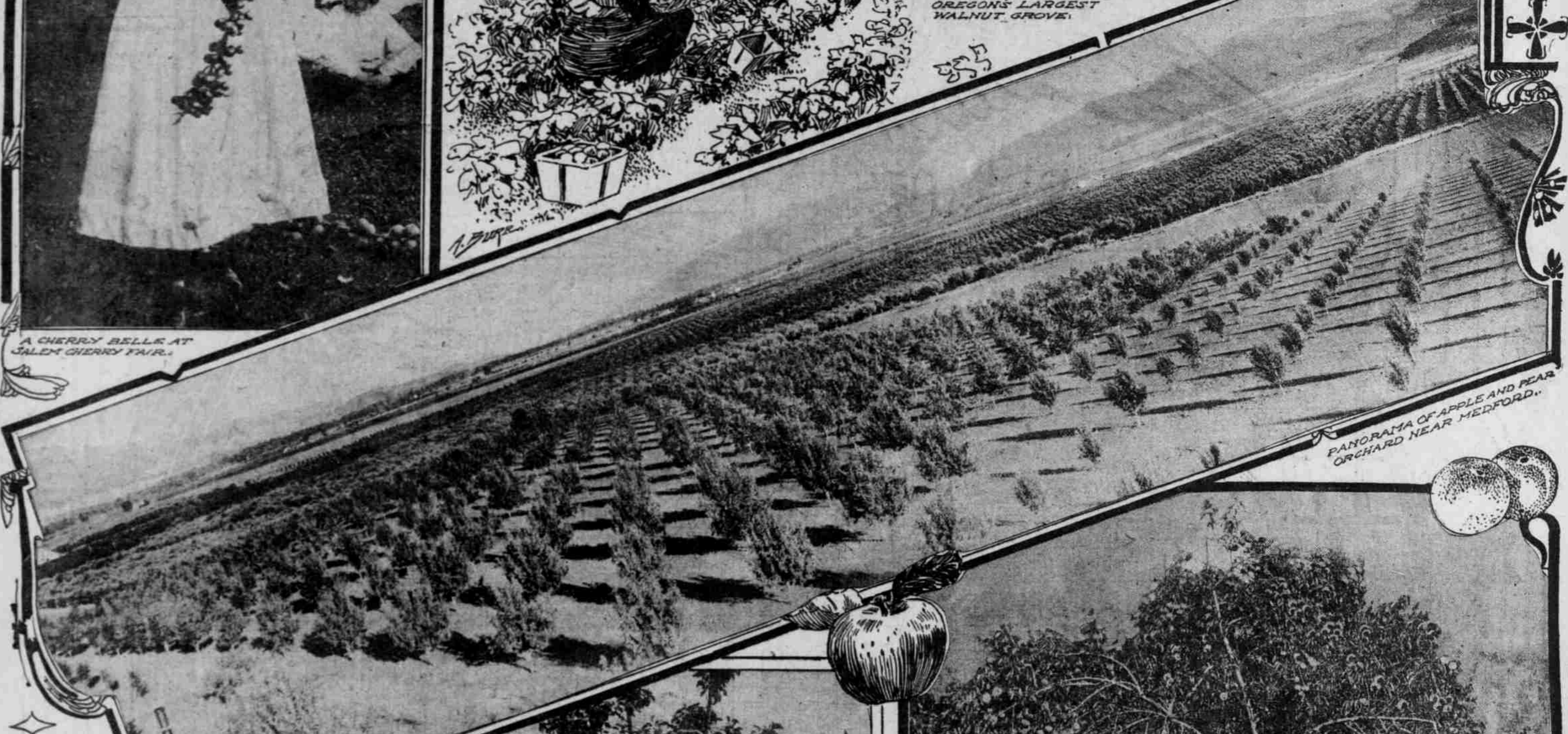
Fruit



A CHERRY BELLE AT SALEM CHERRY FAIR.



OREGON'S LARGEST WALNUT GROVE.



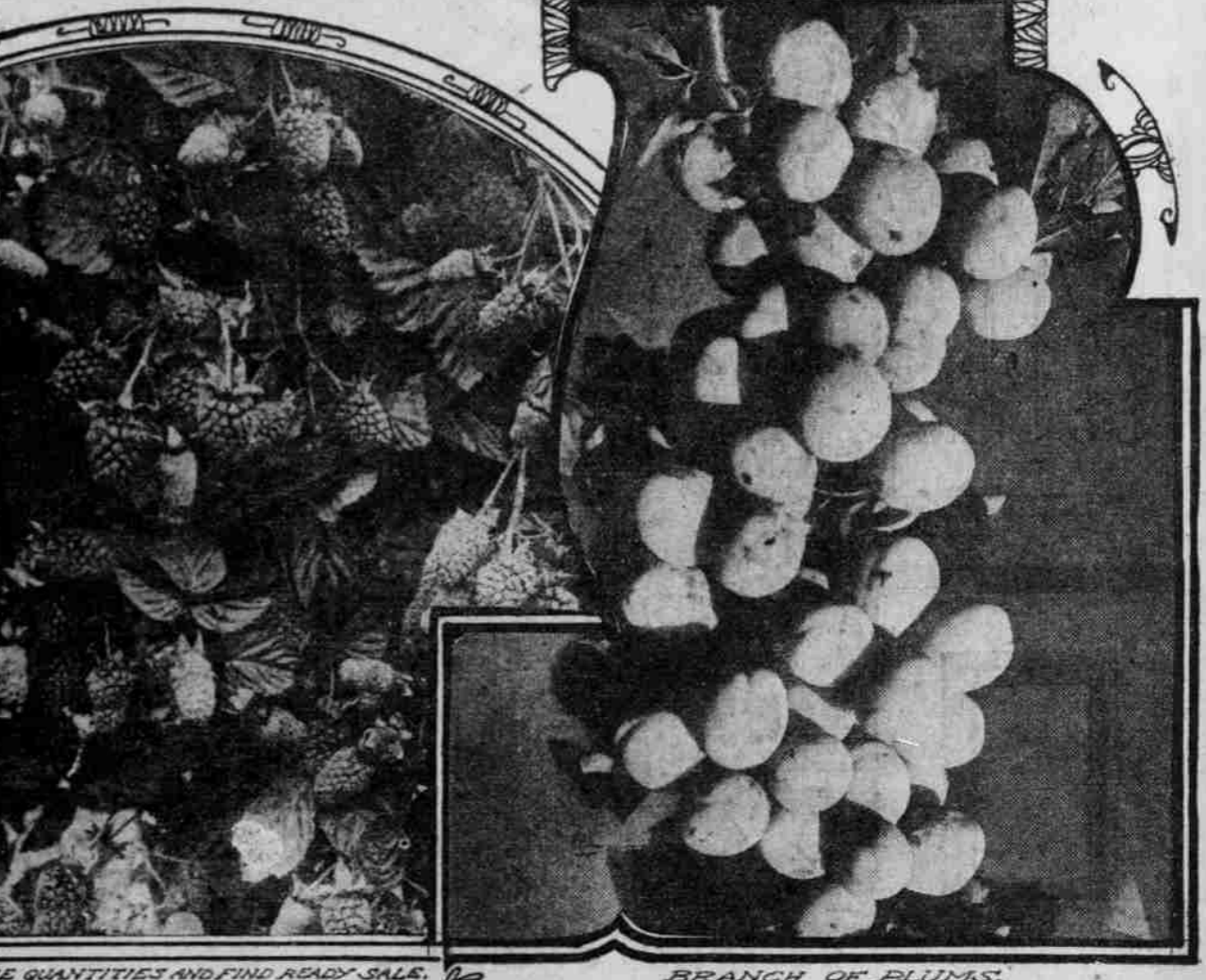
PANORAMA OF APPLE AND PEAR ORCHARD NEAR MEDFORD.



PICKING STRAWBERRIES AT HOOD RIVER.



AN OVERLOADED PEACH TREE.



BRANCH OF PLUMS.



VINEYARD NEAR FOREST GROVE.

PEARS ARE ONE OF OREGON'S MOST PROFITABLE CROPS

LOGAN BERRIES ARE PRODUCED IN LARGE QUANTITIES AND FIND READY SALE.