

POSTOFFICE NOT TO BE ABANDONED

Present Building to Continue Permanently in Use as Central Station.

NEW PLAN IS TIME-SAVER

Policy of Government Is to Deliver Mails, and "Working Warehouse" Will Mean Great Gain in Expediting Service.

There is no prospect that Portland's postoffice will be removed entirely from its present location.

When the new "working warehouse" of the postoffice is completed on a site near the railroad terminal station, probably on block 5, in Couch Addition, which the Government is now seeking to condemn for that purpose, the mailing and delivery departments will be moved to the new building. It is intended, however, that a station shall be maintained at the present postoffice, and people may continue to buy stamps and money orders and to mail letters there. Lock boxes in sufficient numbers for all needs will also be maintained.

Persons who oppose removal of the central postoffice to a location nearer the railroad station, and who understand the conditions, said Postmaster Merrick yesterday. "In my opinion it will be the policy of the department always to maintain a central station in Portland, the central office is now located. But to facilitate rapid handling of mail it will be necessary to have the mailing and delivery departments nearer the point of arrival and departure.

Time Will Be Saved.

"At present 15 minutes is allowed after trains arrive for the wagons to reach the postoffice with the mail. During that 15 minutes no hand can touch the mail. When the central office is located as near as the railroad station as block 5, three minutes will be ample time to make the transfer from the train to the postoffice. The difference is 12 minutes, long enough for 24 clerks to sort the mail. So under the new plan the carriers will be leaving the office at a time when they are sorting of the mail is just beginning.

The Postoffice Department has adopted the plan of constructing several buildings exclusively for postoffice purposes in the large cities and of locating these buildings as near as possible to the principal railroad station. It is a decided compliment to Portland that the importance of this city has been recognized to this extent. The first of these exclusive postoffice buildings is now nearing completion in St. Louis and will be occupied in April.

Delivery Is Main Object.

"It is the general policy of the Postoffice Department to deliver the mail, and that theory is being worked out all over the country. Postal inspectors who visit Portland say more people see the central office here than in any other city in the country. In Portland, for example, we have four times as many general delivery clerks as they have in the central office in New York. In that city they are working on the theory of delivering the mail at the home or place of business of the person addressed. The policy all over the country is to deliver the mail by general delivery at the postoffice. In Seattle a rule is rigorously enforced requiring persons to give an address for mail delivery, and in that city delivery being permitted not longer than 30 days.

"Such a rule in Portland might impose some hardship because of the inadequacy of the working force of the office here. We have never been able to institute carrier service in Astoria, for example, because we do not have enough carriers. Many persons who have homes in Astoria live a mile or more from the Astoria postoffice, and to get their mail they have to take a car or a long walk. These people get their mail sent to the general delivery department of the Portland postoffice.

City Outgrows Facilities.

"Since it is the policy of the department to deliver the mail rather than to have it called for, it is clear that every improvement that facilitates sorting of mail in the postoffice and quick handling by carriers improves the service.

"A great many residents of Portland do not realize that the city has grown into a large metropolis and that the postal business has grown with it. In fact, it is difficult for the postoffice to keep up with the city's growth because of the difficulty in getting authorization for additional carriers. Last year I asked for 12 more carriers. An inspector was sent to Portland to pass on the request, and reported favorably. Later a second inspector was sent, and he also reported favorably. Now there are three inspectors at work here to decide finally whether the additional carriers shall be authorized.

"When I became Postmaster, it was my opinion that to remove the central Postoffice to the Union Depot would be a crime. Since that time, however, dealing with postal affairs I realize that that is the only thing to do.

Bonuses Paid for Speed.

"The Government is paying large bonuses to get the mail here on time, and it would be poor economy not to expedite delivery in every possible way after it is here.

"Another thing that many fail to realize is that Portland has more population north and east of the Union Depot than south and west of it. The Broadway bridge is now to be built. It will be a huge artery feeding a populous territory on the East Side. The Broadway bridge will start on the east side from Seventh street, and if the Postoffice is located on the site that has been recommended, the carriers can start by the efficient way in a car for the East Side without delay.

"The railroad bridge, which is now under way, will land at Gilman street on the West Side, and this street also is one of those by which Block 5 is bounded, which is another point in favor of that location."

Stockholders Inspect Plant.

EUGENE, Or., Feb. 1.—(Special.)—R. A. Danahar of Detroit, Mich.; J. W. Hiediger and Mark Morris of Grand Rapids, Mich.; J. F. Kellow of Duluth, Minn., and George H. Kelly of Portland, all stockholders in the Booth-Kelly Lumber Company, are in Eugene to inspect the plants of the company in Lane County before the annual meeting of stockholders, which is to be held here Tuesday, February 7. Only routine business is expected to come before the stockholders at this time.

Judging Airships Tomorrow

Judging of Models of Airships entered in our contest for Boys will take place Friday afternoon at 3 o'clock. The following well-known men will act as judges and prizes will be awarded accordingly: Professor Robert Krohn, Physical Director of Portland Schools; Professor J. R. Bynhold, Manual Training Instructor, Portland Schools; Mr. E. L. Wiendeman, of the Vonder Werth Boat building plant—Come and see the great display.

Pure Food Fair on 4th Floor

Afternoon Concert by "Ruzzi's" Orchestra
Crowds are increasing daily at our International Pure Food Show. The most attractive displays are here. Come and sample the goodies which are being served—You could not spend a few hours better than at this FAIR.

The Greater Olds, Wortman & King Store

February Rummage Sale in All Depts.

First to Establish the Long Distance Telephone Service in Oregon--Now Extended to Washington

Many months ago we established a Long Distance Telephone Service to many cities in Oregon which has proven so very popular with our customers in other towns and brought us such good returns in the way of satisfactory service, that we now extend this excellent service to the state of Washington—Following is a list of cities and towns to which the service extends:

- | | | | | | | | | | | | | | | | | | | | | | | | | | | | | | | | | | | | | | | | | | | | | | | | | | |
|--------------------|----------|-------------|------------|-------------|---------------|------------|---------------|------------|---------|------------|--------------|-----------|--------------|-------------|-------------|----------|-----------|------------|-----------|-----------|---------|------------|------------|---------|--------------|-----------|--------------|-----------|---------------|-----------------|---------|-------------|--------------|---------|-----------|-------------|----------|----------|-------------|-----------|---------|------------|--------|----------|------------|-----------|-----------|-----------|---------|
| —Oregon | Albany | Brookings | Clatskanie | Corvallis | Cottage Grove | Dallas | Dufur | Elk City | Engle | Falls City | Forest Grove | Gaston | Gold Hill | Glendale | Grande Pass | Gresham | Halsey | Harrisburg | Hermiston | Hillsboro | Hoquiam | Hood River | Houlton | Hubbard | Independence | Irigoin | Jacksonville | Jefferson | Junction City | Lafayette Falls | Lebanon | McMinnville | Mayger | Medford | Monmouth | Mount Angel | Newberg | Oakland | Oregon City | Philomath | Rainier | Reedsville | Riddle | Roseburg | St. Helens | Scappoose | Sherridan | Silverton | Yamhill |
| —Washington | Aberdeen | Buena Vista | Carrollton | Castroville | Centralia | Ellensburg | Friday Harbor | Goldendale | Hoquiam | Ilwaco | Kelso | Le Center | Little Falls | McMinnville | Montezuma | Napavine | Oak Point | Olequa | Olympia | Ostrander | Pe Ell | Puyallup | Ridgefield | Satsop | Seattle | Skamokawa | South Bend | Stella | Stevenson | Tacoma | Tenino | Wahouga | White Salmon | Toledo | Trentline | Vancouver | Vernonia | Washoula | Wenatchee | Wentworth | Willapa | Woodland | Yacolt | | | | | | |

Cooking School Today, Three P. M.

Extra! In Basement "Underprice" Store

Housekeepers will find easy choosing in the basement underprice store. In the Chinaware Section will be shown a line of Japanese Decorated China priced for Housekeepers' day at: 10c Bread and Butter Plates at 5c 15c Tea Cups and Saucers at 9c 25c Sugar and Cream, per pair 17c 25c Berry or Salad Bowls at 14c 10c Salts and Peppers, at only 5c

Blue English Semi-Porcelain

7-Inch Plates, special at, each 5c 9-Inch Plates, special at, each 7c Fruit Saucers, specially priced at 4c Tea Cups and Saucers, special at 9c Deep Bowls; rummage sale price 9c 10c Meal Bowls, specialized at 6c

Bed Sheets 48c

In the basement underprice store, large full size Bed Sheets; torn and hemmed, ready for use; only 48c SHEETS—Very heavy, unbleached; extra good size; specialized 42c for this sale at only, each 42c PILLOW CASES—Size 45x36, made extra well, with 3-inch hem; good heavy quality; specialized for 10c this sale at the low price, each 10c BED SPREADS—In full double size, white or colors; Mar- 12.12 seilles patterns; special at \$1.12

Bath Towels 17c

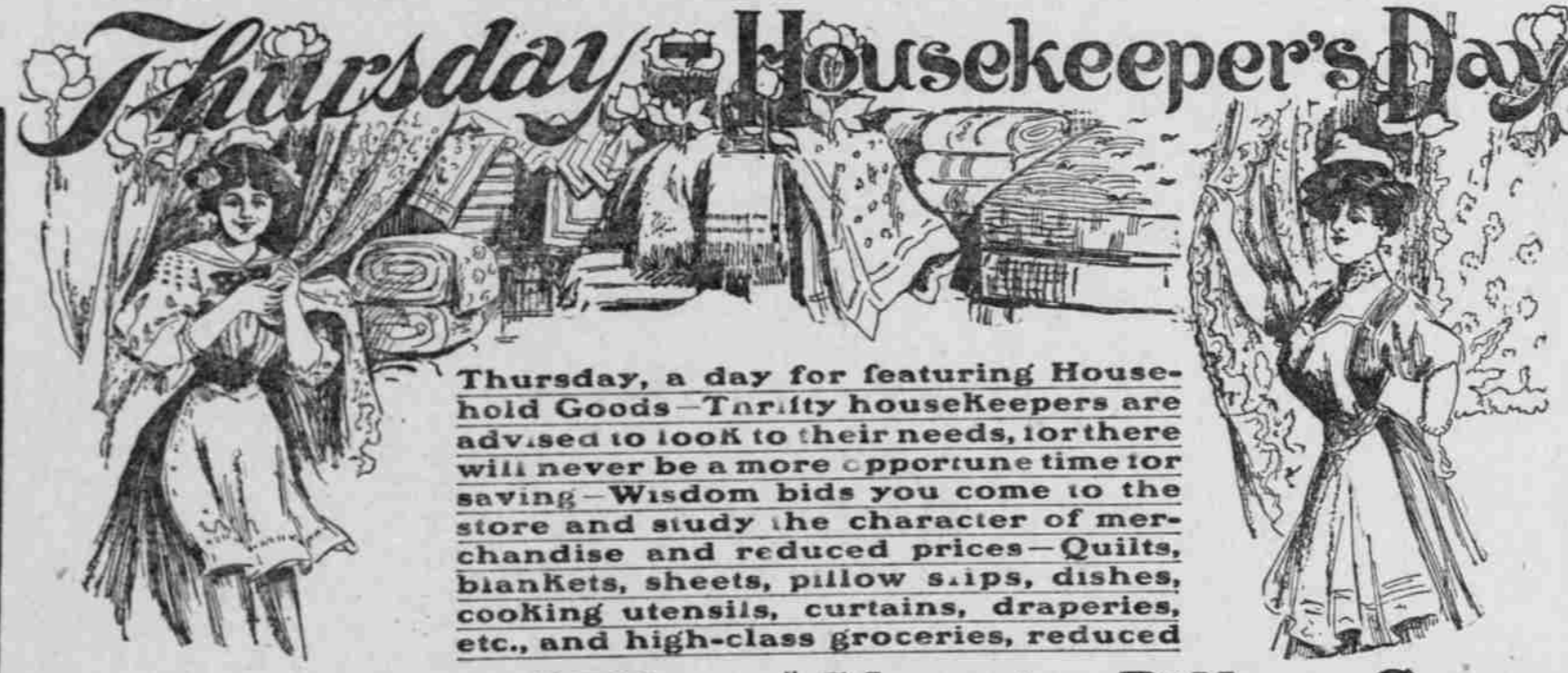
Good heavy quality Bath Towels, size 20x40; exceptional size and value; specialized at, each 17c TABLE CLOTHS—Of good quality Linen, 66x72 inches; very choice patterns; very special House-keepers' rummage sale at \$1.48

Groceries in "Underprice" Store

Cloverleaf Butter 69c EGGS—Fresh Eastern, dozen 25c BACON—English style, pound 20c JELLY—Pure fruit, put up in 10-pound pails; our regular \$1.00 jar \$1.25 kind only, pair \$1.00

Tapestry Remnants \$1 Values at 12 1/2c

Today in the basement underprice store, a clean-up of Tapestry Remnants, size 24x27 inches square, just right for pillow tops, cushion or chair covers; worth to \$1 each; 12 1/2c very special for this sale CURTAIN SCORIM in reversible patterns, 36 inches wide; choice of many designs; per yard at 10c LACE CURTAINS in white and Ecru, 2 1/2 to 3 yards long; full width, many good patterns to choose from. At the extremely low price 85c



Rummage of Fine Wool Blankets

There is a lot of cold weather ahead. But suppose it was mid-Winter, you'd need these blankets just the same. There is not a month in the whole year when you can entirely discard your Blankets; you know it. High-grade white wool Blankets in broken lines a saving as follows: 4.50 White Wool, pair \$ 2.95 5.00 White Wool, pair \$ 3.45 7.50 White Wool, pair \$ 5.75 10.00 White Wool, pair \$ 7.35 12.50 White Wool, pair \$ 8.75 13.50 White Wool, pair \$ 9.75 16.50 White Wool, pair \$11.75 18.50 White Wool, pair \$13.95 22.00 White Wool, pair \$15.85

\$2.25 Pillows \$1.45

Housekeepers' Day for thrifty women. In the Bedding Store, 3d floor, we offer good clean feather-filled pillows with fancy art tick covers; our regular \$1.45 \$2.25 values; sp' l price \$1.45

Down Pillows—Excellent quality, with fancy linen ticks; our regular \$8.00 value; sp' l price, today only, at \$6.50

\$50 Portieres at \$35

\$6 Madras Curtains \$2.49

\$12 Couch Covers at \$7.50

In the drapery store, third floor, a sale of imported Jute Portieres, double-faced, very rich color combinations; our best regular \$50.00 values, special rummage \$35.00 value price, the pair \$35.00 MADRAS CURTAINS, imported, in very artistic designs and colors; splendid for the hall, library or dining-room; regular \$10.00 and \$11.00 values are priced for rummage at \$6.29 pair, and our best regular \$5.00 and \$6.00 pair values at only, the pair \$2.49

Sheets, Pillow Cases and Fine Table Linen

This Housekeepers' Sale will afford universal opportunities for saving on Sheets, Pillow Slips and Table Linens. Some odds and some regular lines—500 dozen Heavy Waxed Sheets are offered in the Domestic Aisle—Very durable quality, size for double bed; lay in a 52c supply today at this wonderfully low price sale at only 52c

\$14.00 Floss Mattresses at \$9.50

In the Bedding Store, 3d floor, very fine grade of Silk Mattresses, made of best art tick with heavy roll edge finish, weight 30 pounds; they are our regular \$14.00 values for only \$9.50

\$3.50 Bed Comforters at \$2.75

Made of art ticking, filled with excelsior center and cotton, well padded on all sides; \$6.50 values for only \$5.00

Comforters—Light and dark colors, with fancy centers and plain borders; best quality silkens covered; \$3.50 values at \$2.75

Comforters—In light or dark colors, filled with cotton, fancy Silkoline covered; exceptional \$2.75 values for this sale at \$2.25

Rummage Dinner Sets

Johnsen Bros.' best quality of white English Semi-Porcelain, in the latest plain or oxford shapes; unglazed glaze and finish; on sale at these extremely low prices: 50-piece set, \$5.04 value \$3.60 60-piece set, \$6.40 value \$4.60 100-piece set, \$9.95 value \$7.13

Border pat'n, Lily of the valley, full gold lines and knobs, fancy shapes: 50-piece set, \$5.00 value \$4.80 60-piece set, \$6.40 value \$4.80 100-piece set, \$9.95 value \$7.45

Grindley's English semi-porcelain, plain shape border pattern of conventional designs and lines at: 50-piece set, \$7.85 value \$ 5.95 60-piece set, \$10 value \$ 7.60 100-piece set, \$15.50 val. \$11.80

Gold border patterns of small vine and gold line; fancy shape. Choice design white and gold, as follows: 50-piece set, \$7.85 value \$ 6.25 60-piece set, \$10.50 value \$ 7.95 100-piece set, \$15.50 val. \$11.35

MANY MORE AT THE STORE

Take Lunch in the Tea Room, 4th Fl.

Extra! Pure Food Groceries

Fourth Floor Extracts of Quality

"Van Duzer's" for over 63 years have led all the world for quality Silas R. Van Duzer was the first white man to manufacture extracts having been previously made by Indians. Van Duzer was also the first man to use "Perfectly Pure" on labels, long before pure food laws compelled others to do so. These extracts are used and endorsed by the United States Government. For sale 35c in our pure food grocery at

A sample bottle of lemon given with each bottle of vanilla purchased at the both in our pure food grocery.

JELLYCOON—Assorted flavors, 25c special at 3 packages for Free samples at Pure Food Fair.

CRAB MEAT—Choice pieces 35c in tins, 20c each, or 2 for

CATSUP—Faust Brand, always good, demonstrated at the Pure Food Fair with Olympia oysters. Try it today. We sell 25c bottles at 20c

Sale Bohemian Butter 75c the Sq.—Nuff Sed

EGGS—Best Oregon ranch, 30c guaranteed fresh, the dozen at

Today Is "Sugar Day"

DRY GRANULATED, 18 lbs for \$5.30 lbs for \$1; 100-lb. sack, \$5.30

DRY GRANULATED, Cane Sugar, 17 pounds for only \$1.00, 100-lb. sack for only \$5.50

3-pound Can Lard, special at 50c 5-pound Can Lard, special at 75c

Demonstration of the Dustless Dusters

See them on the first floor, near the elevator. A revolution in the treatment of dust is being demonstrated. Dust with one, you'll have no other.

Sensational Sale Kitchen Goods

Take the Elevator to Third Floor.

12c Gray Enamelled Jelly Cake Pans at the special price of only 5c

10c Gray Enamelled Coffee Strainers, special at only, ea. 5c

90c Aluminum Ladles, special at 65c 30c Large Size Whisk Broom, 15c

15c Wood Handled Ladles, special, 8c 15c Hot Pan Holders, special, ea. 8c

7c Wood Handle Coffee Strainers, 4c 5c Fancy Cake Cutters, each at 2c

25c Egg Poachers, special, ea. 15c 25c Shallow Sauce Pans, each, 10c \$3.00 Covered Roasters for \$1.50

BIGGEST Y. M. C. A. IS NEAR

Today's Campaign Expected to Place Portland at Coveted Goal.

If the Portland Young Men's Christian Association signs 211 members on this, the last day of the campaign, it will reach the goal that it has set and become the largest association in the world. An increase of 133 members was reported yesterday, raising the total registration to 500. If the desired 211 members are signed today, this will be the second best showing in any one day since the campaign started. It is probable, however, that the full number will be added, as the boys' department has been holding back a large number of names that will be reported today. All of the members signed during the present campaign will attend a supper in the Y. M. C. A. auditorium tomorrow night at 8:30. At this time General Secretary Stone and other officers will speak, welcoming the new men and telling them how they can get the most out of the association and put the most into it. It is probable that several hundred men will attend the supper.

LOW BIDS ARE DEMANDED

Board Says Otherwise Water Pipe Will Be Laid by Day Labor.

If contractors expect to secure jobs of laying water pipe for the city under the terms of the new law, they will have to make their bids so low that they will not pay the city to have the work done by day labor. At the meeting of the Water Board yesterday afternoon it was agreed that bids should be solicited for the more important mains to be laid by the city, and that if these were not within the amounts it would cost the city to have the work done by hiring men, the bids should be rejected. On small jobs the city will not advertise for bids, but will simply have them done by the laborers of the department. In this way it is expected to facilitate the work. The Board authorized the employment of two new inspectors at salaries of \$90 a month.

CONFERENCE JOINS SECTS

Unitarian and Universalist Sunday Schools Unite.

The Unitarian and Unitarian Sunday School conference will be held this afternoon from 1 to 5 o'clock at the Unitarian Chapel, Seventh and Yamhill streets. The programme will be: 1:00 P. M. Inaugural address. Rev. A. H. Sargent; 1:30 P. M. words of welcome. Rev. W. G. Elliot; 1:50 P. M. paper, "The Personal Influence of Teacher on Scholar"; Rev. Paul S. Bandy; discussion; 2:00 P. M. paper, "Object Lesson"; Rev. A. H. Sargent; discussion; 2:30 P. M. paper, "Boys and the Sunday School"; Rev. James D. Corby; discussion; 3:00 P. M. paper, "Benefit to Children from the Study of the Bible"; Rev. W. G. Elliot; discussion; 4:00 P. M. business and collection; 4:30 P. M. devotional service.

Two Wives Sue for Divorce.

OREGON CITY, Or., Feb. 1.—(Special.)—Mary Odessa Hilliard has filed a suit for divorce against W. H. Hilliard

for a decree of divorce. They were married in Portland, Or., September 3, 1902. She charges him with calling her vile names, having struck her, and finally deserted her March 4, 1910, since which time she has been obliged to support herself. Mary B. Partridge has filed suit for divorce against A. H. Partridge. They were married at Newberg and Mrs. Partridge says her husband deserted her August 13, 1905.

Backache, Rheumatism, Nervousness

Mean disordered kidneys. Foley Kidney Pills have helped your neighbors; they will also help you. Chas. S. Potter, Springfield, Ill., says, "I injured my kidneys some years ago but lately the trouble has become very serious. I had a dull pain in my back that seemed to drag me down, my kidney action was irregular and I lost much sleep at night in consequence. I heard of Foley Kidney Pills and began taking them. Before I had taken one bottle I was greatly relieved and now I certainly feel like a different man. Thanks to Foley Kidney Pills am once more well and I recommend them to anyone suffering from kidney or bladder trouble." Sold by all druggists.

Webfoot Oil Dressing, the greatest shoe grease made. All stores.

CITRUS FRUITS COMPETE

"Under-Consumption" Regarded as Present Apple Market Menace.

OREGON AGRICULTURAL COLLEGE, Corvallis, Or., Feb. 1.—(Special.)—C. E. Whistler, of Medford, manager of the Bear Creek Orchard and representative of the Rogue River Fruit Association at the recent convention of apple-growers in Portland, spoke before the students of the Winter short course here today on the "Preparation and Marketing of Apples," characterizing the great danger to the apple industry as "under-consumption," rather than over-production. Mr. Whistler showed that while fewer apples were being produced than ever before, the advertising of sub-tropical and citrus fruits had drawn away the attention of the world from apples and that the great movement of apple producers was but just beginning to bring the people back to the old delicious favorite. More apples are in storage this year in ratio to the total crop than

ever before in the history of the industry, he said.

The greatest shipping problem in the apple industry, said Mr. Whistler, is the problem of obtaining an equitable storage and transit rate from the railroads similar to that now given for the shipment of wheat and livestock.

Roan-Building Bee Held.

WHITE SALMON, Wash., Feb. 1.—(Special.)—With some of the ladies of the Woman's Club taking the lead a roan-building bee was given here yesterday and today. Ranchers and townspeople turned out with teams, picks and shovels. The work was done on the highway to White Salmon from the north, and a road that was almost impassable is now in good condition. Picnic dinner was served by the ladies at Grange hall both days. A piece of flannel dampened with Chamberlain's Liniment and bound on to the affected parts is superior to any plaster. When troubled with lame back or pains in the side or chest give it a trial and you are certain to be more than pleased with the prompt relief which it affords. Sold by all dealers.