

JEWEL ROBBERY PUZZLES POLICE

Mrs. William Thaw Finds Her Pearls, Diamonds, and Sapphires All Gone.

PLUNDER WORTH \$35,000

Necklace of 110 Pearls Alone Valued at \$17,000—Detectives in Every Disguise Swarm About House, but Find No Evidence.

PITTSBURG, Jan. 24.—The entire police and detective force of the city and of a private detective agency are endeavoring to solve the robbery of \$35,000 worth of jewelry from the home of Mrs. William Thaw, Jr., on the North Side, last night.

Every pawnbroker here has been furnished a description of the stolen goods, which has been furnished to every city in the country.

Jewels Many and Costly.

One gold necklace set with emeralds and pearls.

Gold chain set with pearls.

Method of Robbery Mystery.

The jewels were kept in a casket in Mrs. Thaw's room and the closest in this was placed with a skeleton key.

ELGIN YOUTH SENTENCED

Layer of Father-in-Law Must Go to Prison for Five Years.

LA GRANDE, Or., Jan. 24.—(Special.)—Five years in the penitentiary is the sentence given Jess Parker, the Elgin youth, convicted of murder in the second degree.

ANCHER DIES ALL ALONE

Discovery Made Three Days Later by Neighbor Who Calls.

VANCOUVER, Wash., Jan. 24.—(Special.)—Calling at the home of Peter Strang, 19 street, Vancouver, Salmon Creek, to deliver a message.

HELMINA YET ON SAND

Is Boat Beached at Umpqua River Can Be Saved.

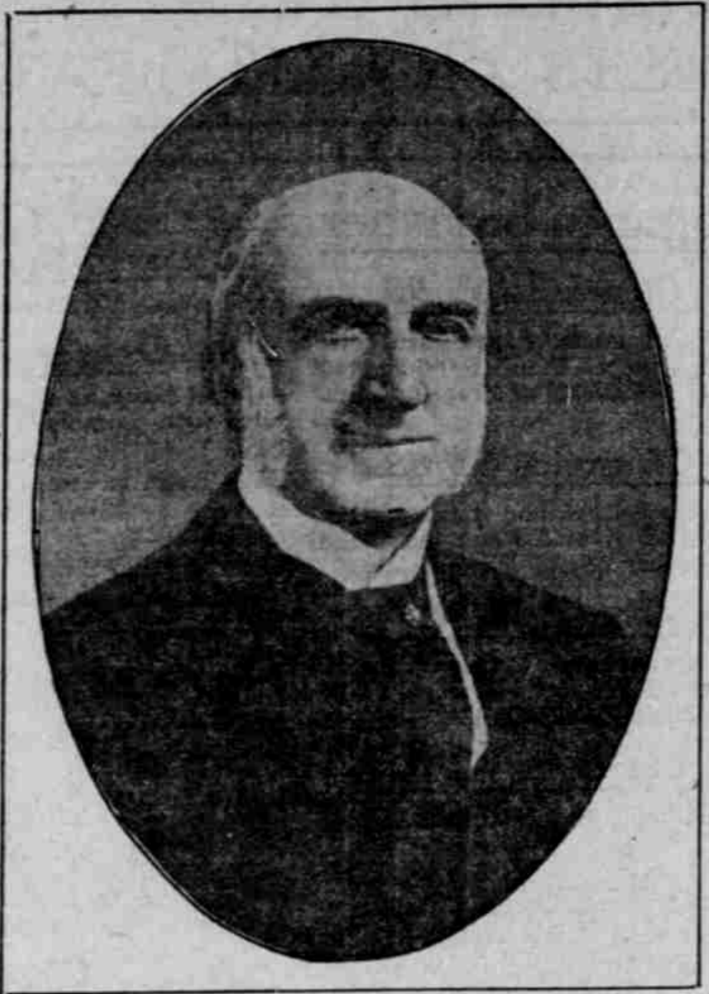
SEASIDE, Or., Jan. 24.—(Special.)—The schooner Wilhelmina is still on beach at the Umpqua River.

STATES TO AID WEST

(Continued from Page 1.)

a considerable amount with which to work and cost the commercial clubs \$25 per 100 members per annum.

NEW YORK'S SENATOR WHO OPPOSES POPULAR VOTE RESOLUTION.



CHAUNCEY M. DEPEW.

TAMMANY SOON TO QUIT

SHEEHAN TO GET SUPPORT FOR ONLY TWO MORE BALLOTS.

If Not Elected Then, He Must Give Place to Another—Mack Appeals to Party to Support Him.

ALBANY, N. Y., Jan. 24.—It was reported that Tammany leaders had let Sheehan know they would stand by him only till Friday in the Senatorial fight.

MACK APPEALS FOR SHEEHAN

Tammany Candidate Entitled to Every Democratic Vote.

BUFFALO, N. Y., Jan. 24.—Norman E. Mack, chairman of the National Democratic committee, said tonight that the caucus nominee at Albany is entitled to the "support of every Democrat in the state."

ALLIANCE KEEPING PEACE

Japan Rejoices in British Tie—Tariff Treaties to Be Revised.

WASHINGTON, Jan. 24.—Interest attached to the speech made today in the lower house of the Japanese Diet at Tokio by Count Komura, Minister of Foreign Affairs.

ANCHER DIES ALL ALONE

Discovery Made Three Days Later by Neighbor Who Calls.

VANCOUVER, Wash., Jan. 24.—(Special.)—Calling at the home of Peter Strang, 19 street, Vancouver, Salmon Creek, to deliver a message.

HELMINA YET ON SAND

Is Boat Beached at Umpqua River Can Be Saved.

SEASIDE, Or., Jan. 24.—(Special.)—The schooner Wilhelmina is still on beach at the Umpqua River.

STATES TO AID WEST

(Continued from Page 1.)

a considerable amount with which to work and cost the commercial clubs \$25 per 100 members per annum.

DEPEW WARNS OF SHIFTING SENATE

Long Terms Best, He Urges, in Attacking Popular Election Resolution.

SUBSTITUTE IS OFFERED

New Yorker Declares Title of Proposition Is Deceptive and That Its Purpose Is to Tie Hands of Voters in General.

WASHINGTON, Jan. 24.—Opposition to the resolution now pending in the Senate, calling for the popular election of its members, seemed today by Senator Depew of New York.

WASHINGTON, Jan. 24.—The title of this proposition is to allow the people to vote. The purpose and object of the resolution is practically to prevent the people from voting in any state where a dominant power, or oligarchy, wishes to disfranchise a certain portion of the citizens of that state.

WASHINGTON, Jan. 24.—(Special.)—At the regular meeting of the City Council last night it was decided to submit at the next election a charter amendment authorizing the issuance of \$25,000 in bonds for the purpose of installing a municipal lighting system.

POPULAR RESPONSE ABSENT.

ELMA HUMANE SOCIETY ELECTS.

ELMA, Jan. 24.—(Special.)—The Elma Humane Society elects.

CITY LIGHTING SYSTEM UP

Eugene Plans \$25,000 Bond Issue for Municipal Illumination.

EUGENE, Or., Jan. 24.—(Special.)—At the regular meeting of the City Council last night it was decided to submit at the next election a charter amendment authorizing the issuance of \$25,000 in bonds for the purpose of installing a municipal lighting system.

VANCOUVER ELKS TO GIVE SHOW.

VANCOUVER, Wash., Jan. 24.—(Special.)—Vancouver Lodge of Elks will give a show in the Opera House February 25. This is an annual event in Vancouver.

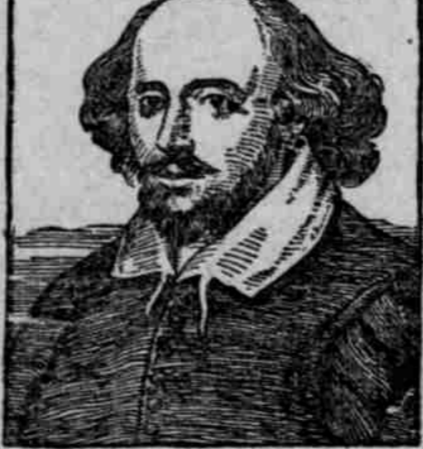
WISH TO NOTIFY OUR FRIENDS THAT WE HAVE PERFECTED A FREE DELIVERY SYSTEM WHICH ENABLES US TO REACH ALL PARTS OF THE CITY SEVERAL TIMES DAILY.

ELMA HUMANE SOCIETY ELECTS.

ELMA, Jan. 24.—(Special.)—The Elma Humane Society elects.

WILLIAM WINTER

SHAKSPERE



No one knows more about the way Shakspeare has been represented by the great actors than William Winter, the oldest and the foremost dramatic critic.

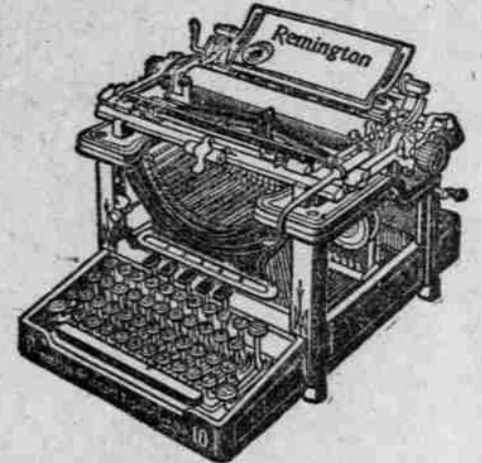
In a series of six papers he takes up the six great Shaksperian characters and tells just how they have been acted from the time of Shakspeare down. Many men have played Hamlet, the most popular of all Shaksperian roles, and also many women, but according to Mr. Winter the greatest Hamlets were Henry Irving and Edwin Booth.

CENTURY MAGAZINE

35 cents a copy, \$4.00 a year. At all book stores, or The Century Co., Union Square, New York.

THE FACT that the REMINGTON TYPEWRITER

OUTWEARS ALL OTHERS, a fact universally admitted, is proof conclusive of its superior merit, for WEAR is the quality which determines WORTH.



Absolutely satisfactory service is guaranteed to every purchaser of the Remington

Remington Typewriter Company

(Incorporated) 249 Stark St.

New Models 10 and 11

CALIFORNIA Personally Conducted Tour

From Tacoma and Southwestern Washington. Leaves Tacoma, Centralia, Chehalis and Portland. Feb. 18th

O.-W. R. & N.

"LINE OF THE SHASTA LIMITED"

Southern Pacific

"ROAD OF A THOUSAND WONDERS"

ITINERARY includes stops at San Francisco, San Jose, Santa Clara Valley, Del Monte, Paso Robles, Santa Barbara, Los Angeles and a trip through the orange plantations of Southern California

ROUND Trip from Tacoma, South Aberdeen and intermediate points between Tacoma and Vancouver, Wash., and between South Aberdeen and Centralia, \$88.50

THIS RATE INCLUDES railroad fare both ways, meals from the time you leave Tacoma Feb. 18, until you reach Los Angeles Feb. 23, as well as berth for going trip in Standard Pullman sleeper. The final return limit is three months or until May 18, with stop-over permits to suit.

As the accommodations of the special train are limited, you had better make your reservation at once. A deposit of \$10 clinches it.

For further information, call or address

C. W. STINGER, City Ticket Agent, 3rd and Washington Sts. ROBERT LEE, Gen. Agt. O.-W. R. & N., National Realty Bldg. WM. MURRAY, General Passenger Agent, Portland. W. D. SKINNER, General Freight and Passenger Agent, Seattle, Wash.

A Kohler & Chase Piano For Every Purpose And Every Purse

The new Model 1911 Kohler & Chase Piano from \$350.00 up fully maintains the reputation for durability gained by this firm the last 60 years. Other new Pianos from \$200.00 upwards.

We have a most complete assortment of Used Pianos, most of which have been exchanged for Pianola Player Pianos, from \$125.00 upwards.

We sell any Piano on the Monthly Payment Plan if desired.



Reduced Rates to Los Angeles

First Class—\$21.50, \$23.50, \$26.50, including Meals and Berth (Second Class \$10.35) Fare to San Francisco \$5, \$10, \$12, \$15

NEW S. S. "BEAVER" Sails 4 P. M. Fri. day, January 27. SAN FRANCISCO & PORTLAND S. S. CO. H. G. Smith, C. T. A., 142 Third St. J. W. Ransom, Agent, Almsworth Dock. Phones: Main 268, A 1234.