

RATE INCREASE IS HALTED BY STATES

Rock Island Official Prefers Railroads Be Not Hampered So Much.

BURLINGTON LIKES REBATE

Chicago Hearing Brings Out Fact That Railroads Make Rate Fit Profits Merchants Make on Goods They Sell.

CHICAGO, Oct. 31.—Stanley H. Johnson, assistant freight manager of the Rock Island lines, declared before the Interstate Commerce Commission that certain state Railroad Commissions are causing most of the trouble between the shippers and the railroads.

Johnson's statement was made while he was being questioned by Commissioners Lane and Clark, who indicated their belief that the railroads are not satisfied with regulation because it limits their power to increase revenues.

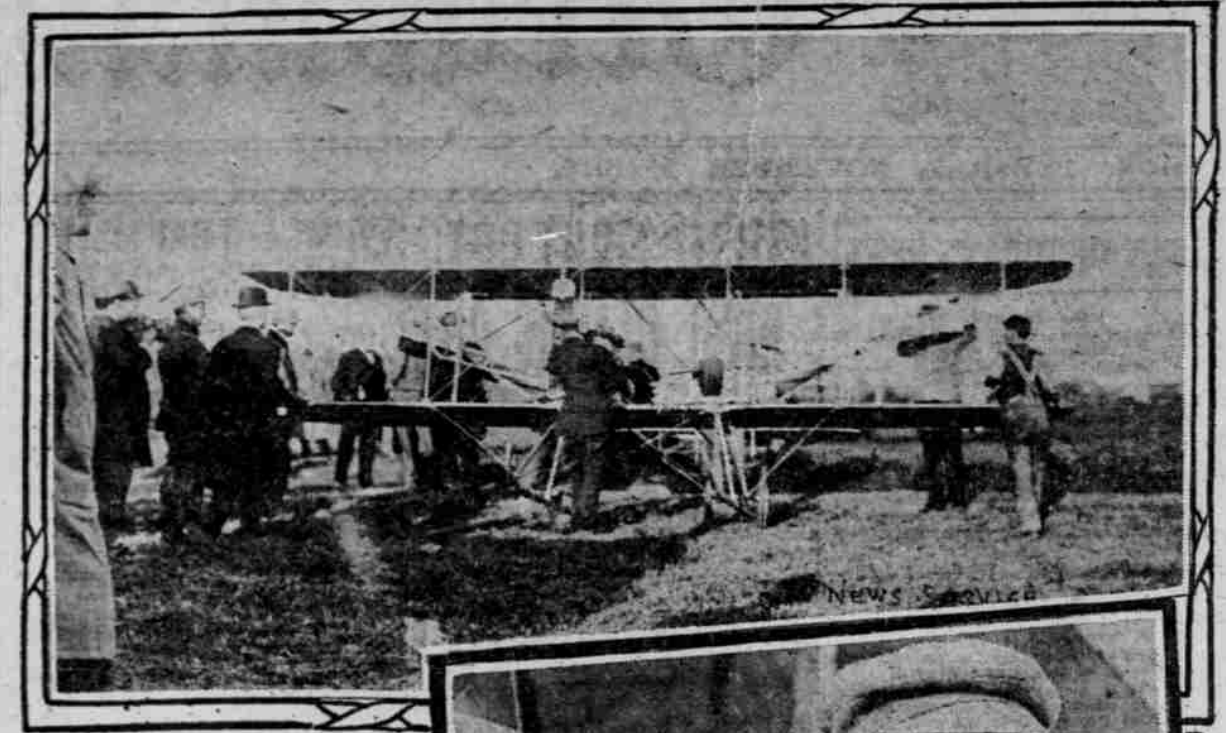
"You are not satisfied with regulation because it limits your power to increase your revenue," said Commissioner Lane, "and you are not satisfied with non-regulation prior to 1906 because you say that led to bankruptcy—now what will satisfy you? In 1906 you had an opportunity to set a standard, but your own and other roads were placed in the hands of receivers. Now we come along."

"Yes," interrupted Johnson, "we might get along famously with your honor and colleagues if we did not have all of these State Commissions to contend with."

General Dickinson, counsel for the railroad, took the witness in hand at this juncture. "Did you advance all commodity rates?" asked Dickinson.

"No, our experience has been that if we did there would be no increase. We have 200 men who are constantly employed in reporting on the profits made by the manufacturers and shippers on all lines of goods."

PHOTOGRAPHS OF THE IDENTICAL MACHINE WITH WHICH THE WORLD'S ALTITUDE RECORD WAS BROKEN, AND OF AVIATOR WHO PERFORMED FEAT.



NEW RECORD MADE

Johnstone, in Wright Machine, Goes Up 9714 Feet.

2 AVIATORS HAVE FALLS

Grahame-White's Challenge for Another Race Around Statue of Liberty Is Ignored by Molsant, Who Wins Distance.

Grahame-White took Allan Pinkerton up in a biplane. Count DeLewiss took up his son for a spin while the distance race was in progress.

The speed race between Grahame-White, in a monoplane, and McCurdy, in a biplane, demonstrated the superiority of the monoplane as a racer.

Grahame-White had finished the last lap and was gliding toward the judges' stand, when his propeller snapped. In a moment he was buried under a wrecked machine, about which a cloud of escaping vapor arose.

Five minutes later he gave everyone in front of the grandstand thrills by stepping from the tent into a Farman biplane, which he maneuvered down the field near the spectators' heads.

The summary of today's events were unofficially announced, subject to changes, as follows: Aero Club of America, distance event, two hours around 135-mile course.

OSWEGO RURAL CARRIER APPOINTED. OSWEGO NEWS BUREAU, Washington, Oct. 31.—Clifford D. Jones has been appointed rural carrier, route No. 1, at Oswego.



—Photos Copyrighted by George Grantham Bain. ABOVE—WRIGHT'S RACER AEROPLANE. BELOW—RALPH JOHNSTONE.

MAGAZINES TO PAY

Postage on Advertising Sections to Be Increased.

PENNY LETTER RATE GOAL

Taft and Hitchcock Agree—News-papers Not Affected—President Hopes to See 1-Cent Rate Before End of Term.

WASHINGTON, Oct. 31.—President Taft and Postmaster-General Hitchcock reached an agreement today on the recommendations the President will make to Congress regarding a change in the second-class postage rates affecting magazines and other periodicals.

Mr. Taft will recommend that magazines be required to pay the present rate of 1 cent a pound on all reading matter, and a much higher rate, to be determined later, on advertising pages.

President Taft is looking forward to 1-cent rate for letter postage and hopes to recommend it before he leaves the White House.

SYRUP OF FIGS AND ELIXIR OF SENNA. CLEANSSES THE SYSTEM EFFECTUALLY; DISPELS COLDS, AND HEADACHES DUE TO CONSTIPATION. BEST FOR MEN, WOMEN AND CHILDREN—YOUNG AND OLD. TO GET ITS BENEFICIAL EFFECTS—ALWAYS BUY THE GENUINE. MANUFACTURED BY THE CALIFORNIA FIG SYRUP CO.

NEW ORLEANS LOSES MINT

Total of \$2,000,000 Gold Bullion Transferred to Philadelphia.

NEW ORLEANS, Oct. 31.—Following an order made known here today, from the Director of the Mint at Washington, that gold bullion in the New Orleans mint, more than \$1,000,000 was transferred last week.

MINT WILL BE SHUTDOWN

Director Roberts Says There's Not Enough Work for 3 Mints.

CHILD BURNS TO DEATH

Medford Girl's Dress Catches Fire; Help Comes Too Late.

MEDFORD, Or., Oct. 31.—(Special.)—Carsten Carlson, the 15-year-old daughter of Fred Carlson, of Medford, was burned to death this morning at her home.

PENNSYLVANIA LINES

First Steel Trains on Regular Daily Schedules. "The Pennsylvania Special" Lv. Chicago 4:45. "The Pennsylvania Limited" Lv. Chicago 7:15. OTHER "LIMITED" TRAINS between Chicago and New York over the Pennsylvania Lines also have new steel equipment, which insures additional comfort, for the heavy cars ride more easily.

CANTAS A. A most comfortable and stylish ARROW COLLAR. 15c. each, 2 for 25c. Claess, Peabody & Co., Arrow Cuffs, 25c.

Dr. Lyon's PERFECT Tooth Powder neutralizes the destructive acids of the mouth—cleanses, preserves and beautifies the teeth, and imparts purity and fragrance to the breath.

usually the mother in the home, keeping house for her father and younger sister. Her mother is dead.

PORTLAND'S PLEA HEARD

EFFORTS MADE TO SECURE CONVENTION OF Y. M. C. A. Selection of Meeting Place Left to Committee—Four Other Cities Are Competitors.

TORONTO, Oct. 31.—Methods of safeguarding the morals and moulding the careers of boys were discussed at today's session of the 37th annual convention of the Young Men's Christian Association.

NEGRO'S CONDITION BETTER

Booker T. Washington Says World Is Understanding Black Man.

ROAD TO BE TAKEN TODAY

NEW YORK, Oct. 31.—Directors of the Chicago, Rock Island & Pacific Railroad Company will meet in this city on November 15 to take over the Chicago, Rock Island & El Paso road.

CALIFORNIA HOTELS AND WINTER RESORTS. WHERE SHALL I SPEND THE WINTER?

SANTA CATALINA ISLAND. Where the Winter Climate is Mild and Delightful. Where the mainland Fogs are Lost, where Frost is unknown. Has the Finest and Sportiest Golf Links in West.

HOTEL VIRGINIA. Long Beach California. ONE OF CALIFORNIA'S most absolutely fireproof hotels.

BANNING COMPANY. 100 Pacific Electric Bldg. Los Angeles, Cal.

Hotel Meropole. European Plan. Every accommodation. All side trips to island point from hotel.

U.S. GRANT HOTEL. SAN DIEGO, CAL. Fireproof, concrete and stone; 500 rooms, 350 with bath; equipped with large salt plunges and Turkish baths.

LONG BEACH SANITARUM. At the Gem Winter Resort of the Southwest. Long Beach, Cal. Latest Battle Creek Sanitarium methods.

CALIFORNIA. Is the place to visit. Orange groves in full bloom, tropical flowers, famous hotels, historic Old Missions, attractive waterfalls, delightful climate.

Shasta Route and "Road of a Thousand Wonders" SOUTHERN PACIFIC COMPANY. Up-to-date trains, first-class in every respect.

SPECIAL ROUND TRIP RATE OF \$55.00 Portland to Los Angeles and Return. With corresponding low rates from all other sections of the Northwest.

L. A. Liljequist Marries. MARRIAGE OF L. A. Liljequist and Miss Emma Sherwood occurred at Coquille, the county seat of Coos County.

Lake County Per Capita \$2000. LAKEVIEW, Or., Oct. 31.—(Special.)—County Assessor Foster has just submitted figures of the 1910 tax roll, and finds that the total sum of all property in Lake County, as found, is \$7,845,215.

Ditch Machine Arrives. CORVALLIS, Or., Oct. 31.—(Special.)—J. K. Sauset, contractor for the big sewer in this city to cost \$100,000, has just brought to this city his big steam ditch machine.

Temporary Heat Quickly. Did you ever stop to think of the many ways in which a perfect oil heater is of value? If you want to sleep with your window open in winter, you can get sufficient heat from an oil heater while you undress at night, and then turn it off.